

SALE REGISTER

(From page 13)

Tues. Feb. 27—1230 p m - Pub. Sale of Farm Equipmt. and Household goods. By Clarence Newcomer, 3 mi. S. of Manheim, along Rt. 72. Shreiner, Auct.

Thurs., Mar. 1—11:00 a.m. Pub Sale of 73 Reg & grade Holsteins and 12 Reg. and grade Guernseys. Certified & Accredited. DHIA average 483 fat. By Albert Fritz Est. and Earl Harnish. On Rt. 222 a Mi. S. of Quarryville. Diller and Kreider, Aucts.

Sat., Mar. 3 — 12:00 noon - Full line of modern farm equipment. By Harry H. Noll 340 Centerville Rd, Lancaster Three miles W. of Lancaster off Rt. 30 Diller & Kreider, aucts.

Sat., March 3 — 12 noon - Pub. sale of farm mach and livestock. By Raymond M Sangrey on S Jackson St, just south of Strasburg Boro Two tractors with full line of equipment, 35 tons corn, 300 bu barley, 15 holstein bulls, 20 shoats J. Omar Landis, Auct

Wed., Mar. 7 — 11:00 a.m Pub. Sale of full line of farm equipment By Earl Harnish Along Rt 222 a mile South oof Quarryville Diller and Kreider, Aucts.

Thurs., Mar 8 — Pub. Sale of Farm Equip By Frank Seibel, one mi W of Lexington off Rt 501 N of Lititz Shreiner, Auct

Sat., Mar. 10 — 11 00 a m Pub sale of Livestock, farm eqpt., household goods By Morris Lowe, 3 mi. E of Manheim Shreiner, Auct.

Mon, Feb. 26 — 11 30 a m Sale of farm and saw mill mach, corn, barley, wheat & clover seed. By Howard I. Smith, One mi. N of Rt 422 and 1 mi E. of Lebanon. Sanger, auct

Sat., Mar. 10 — 11 00 a m Farm machinery & 15 Yorkshire Shoats By Clair W Fauth, Windsor R1, York Co On road leading from Windsor Twp school to York Rd. Gilbert Auct

Tues., Mar. 13—11 30 a m Farm Eqpt and live stock By Victor Gish, 4½ mi N of Manheim Hosler & Landis, Aucts

Wed, Mar. 14 — 12 30 pm Holstein Dispersal and sale of farm machinery. By Amos Z Martin, one mi East of Old Philadelphia Pike on Rt 772 Shreiner, Auct

Wed., Mar. 14 — 1 00 p m Pub sale of full line of farm equipment & milking equipment by Raymond H Miller along road from Oak Shade to Tailorya. Kreider & Diller Aucts.

Wed., Mar 15 — 9 30 a m Sale of two farms, 40 Reg Jerseys, 25 Holsteins, bulk tank, hay and straw By Jonathan Herring, 3 mi NW of Pine Grove 1 mi. E of the Brethren Church Sanger, Auct.

Thurs., Mar. 15 — Sale of 117 acres farm 3 mi NW of Millerstown, Perry Co For Edward Kurtz. Sanger, auct.

Sat., Mar. 17 — 1 30 p m Pub sale of real estate consisting of 33 acres and light farm equipment, along road from Marticville to Smithville, ½ mi east of Marticville by Aaron R Hess. Kreider & Diller, Aucts

Wed, Mar. 21 — 12 noon Pub. sale of farm equipment and household goods by Wilbur Pollock, along road from Buck to Holtwood Kreider & Diller, Aucts.

Thurs., March 22 — 12 00 noon - Pub Sale of Farm

Machinery by Seth J. Sentz at Hellam R1, on road leading from Kreutz Creek to High Mount, approx. 3 miles N. of Hellam. Jacob A. Gilbert, Auct.

Thurs., Mar. 22—11 a. m Pub. Sale of poultry & farm

equipment and household goods. By Levi Weaver, one mi. W. of Neffsville on Rt. 501. Shreiner, Auct.

Sat., Mar 31 — Sale of 532 acre farm, 40 Holsteins, farm machinery and feed. By John Valentine. 10 mi. N. of Coustersport, Potter Co. Sanger, Auct.

PUBLIC SALE

The Contents of The Mt. Airy Feed Mill

Wednes., Feb. 21, 1962

ON THE PREMISES AT MT. AIRY, CLAY TOWNSHIP, LANC. CO., ABOUT 3 MILES N. E. OF CLAY.

LOT OF DAIRY, POULTRY, HOG AND DOG FEED CONCENTRATES & SUPPLIES

127 bags nursing chow, new feeders & fountains, wheat, rye, corn, oats, seeds, straw, plant food and sprays, sprays and disinfectants, new hog feeders, including two 16-hole feeders; new egg washers, used chick debeaker, egg baskets, large and small platform scales, 4 bag trucks, lot of hardware and barn tools, paint and brushes, oils, grease, new and used tools, new forks, aluminum shovels, rakes, shovels, new & used power mowers, 10 rolls of tobacco paper, 2 rolls of polythene, used truck tires and tubes and chains, new galv. garbage cans and buckets, used elect. motors, two elect. fog generators, two chain saws, small air compressor, lot of feed bags, rodent poison, weed killer, fine and coarse salt, lot of boxes of cigars and cigarettes, candy, soft drinks, gloves, razors and blades, bullets and shells, metal and wooden office desks and chairs, metal filing cabinets, elect. adding machines, cash registers, check writer, Tempko gas room heater, two elect. refrigerators, new barbed wire, new fence wire, metal posts, and many other articles not listed.

Sale at 11.00 A. M. Terms by

James P. Coho, Trustee

In Bankruptcy for Leon E. Wingenroth

H H Leid, Auctioneer
J Martha Shreiner and
Torace C Arnold, Jr, Atty's

36-3p

Public Sale!

Feeder Steers and Farm Machinery

Saturday, Feb. 24, 1962

One-fourth mile south of Parkesburg, along Route 10 in Chester County, Pa., the following to wit:

50 FEEDER STEERS

Weighing from 250 to 800 lbs

FARM MACHINERY

Oliver 77 Diesel Tractor

Oliver 55 Utility Tractor; Farmall C Tractor with Cultivator & Mower, Farmall F-20 Tractor, Oliver PTO Pick-up Baler, Oliver Hay Rake, Oliver Corn Picker; Oliver Fertilizer Drill, Oliver Barrel Sprayer with Boom; Oliver Radex 3-bottom Plow with Trip Bottom; Oliver Manure Spreader; Oliver 13-disc Grain Drill on steel; 2-Bottom Radex Plow with 2-point Hook up; 2 New Holland Grain Bins; New Holland Smoker Elevator, New Holland Hay Crimper; New Holland Smoker Corn Drag, Grain Elevator; John Deere 13-disc Grain Drill on Rubber; I H Mounted Corn Picker, 2 Tractor Discs, I H 3 section Spring Harrow; Single Cultipacker; 4 Rubber Tire Wagons; Lift Arm for 3-point Hook Up, Platform Carrier for 3-point Hook Up; I H Corn Planter with Plastic Boxes; PTO Case Corn Binder; I H. Ensilage Cutter with Pipe; Ford Cultivator with 3-point Hook-up, The above machinery is in good condition Approx 200 on of Hay; 1500 ton Corn and 1200 bu Barley; Air Compressor; Shovels; Picks; Platform Scales, Feed Carts; Cow Dehorner; Cow Clippers; Bag Wagon; 1 ton Chain Hoist, 4 different size Vises; Log Chains; Steel Cable; Fence Posts; Electric Wire; Woven Fence Wire; 6" Channel Iron 50' long; Hog Troughs; Iron Kettles; Pulleys; Forks; Etc

HOUSEHOLD GOODS: Two Refrigerators; Dining and Living Room Suites; Electric Stove; 2 Wash Machines; 2 Bedroom Suites; Bureau; and other items not mentioned

Sale at 11:00 O'clock A. M Terms by

STEPHEN KEPIRO
JOSEPH KEPIRO

LeRoy Zook, Auctioneer

LUNCH ON GROUNDS

Sat, Mar. 24 —12 noon - Pub. Sale of Farm Machinery at York R7, in Springetts bury Twp. near the Glades

Auction known as Taylor Acres. Full line of equipment plus hay, straw and grain. By Adda Taylor. Jacob A. Gilbert, Auct.

Stanley H. Deiter
Auctioneer & Appraiser
LAMPETER
Ph. Lancaster EX 4-1796

SALES
EVERY
TUESDAY
2 P. M.

CATTLE — CALVES
HOGS — PIGS
SHEEP — LAMBS

Since 1935, your dependable



Public Sale

SAT., FEB. 24, 1962

AT 10:30 A. M.

The Lampeter - Strasburg Union School District will offer at public sale the following unused buildings which are to be removed from the premises and are ocated on the former Book property adjoining the high school:

Hog Pen, Corn Crib, Brooder House, Corn Barn, Steer & Hog Block Building

with laminated rafters Terms and conditions will be made known on day of sale. For inspection of the buildings call

DONALD E. CAMPBELL
Business Manager
at EXpress 4-7138.

Landis B. Herr
Secretary

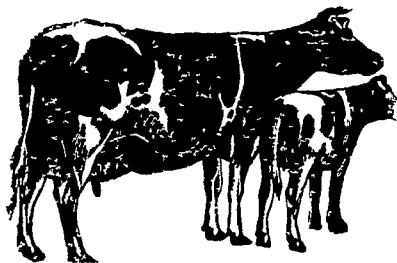
Cloyd Wenger Auctioneer

Complete Dispersal Sale

Thursday, March 1, 1962

One mile South of Quarryville, Pa., along Route 222, 16 miles South of Lancaster.

85 - HEAD - 85



73 Head
Registered & Grade
HOLSTEINS

53 Cows and 1st Calf Heifers
20 Bred and Open Heifers

12 Registered & Grade Guernseys

DHIA 1961 Average for 52 Cows, 11,942 M, 4.0%, 483F.

SELLING:

1 with 772 Fat; 4 with over 650 Fat; 3 with over 600 Fat; 18 with over 500 Fat; 13 with over 400 Fat.

Bangs Cert., TB Accred., Vacc 100% SP A.B.C. Sired All Home-Raised

New Gar Dorothy Sally Sovereign, 6 Yr. 347 Da., 19,346 M., 683 F., 3.5%; Paula Peggy Sovereign, 5 Yr., 365 Da., 16,580 M., 605 F., 3.65%; Patricia Peggy Sovereign, 6 Yr., 322 Da., 13,885 M., 593 F., 4.3%, (Daughters of Hillman Sovereign); Lucy R.A. Champion, 4 Yr., 336 Da., 15,375 M., 677 F., 4.4%, (Daughter of Spafford Rag Apple Admiral); Becky Janet Lucy, 9 Yr., 296 Da., 14,544 M., 541 F., 3.7%, Inka Ashley Blend Della, 3 Yr., 363 Da., 15,133 M., 513 F., 3.4%, (Daughter of Maplebend King Posch); P S. Doris Emperor, 2 Yr., 343 Da., 11,768 M., 492 F., 4.18%, (Daughter of Penstate Lucifer Star), (Her dam sells with over 13,000 M., 4%).

HIGH RECORD GRADES SELLING:

Nannie, 18,704 M., 772 Fat, 4.1%, (Her 3 Daughters Sell, One of them Nan, making over 16,000 M., 4.0%); Mary, 13,159 M., 691 F., 3.8%.

About 30 Head are Bred for Summer and Fall Calving

For Folder Write: Carl Diller, Refton, Pa

Full Line of Farm Equipment Sells

March 7, at 11:00 a. m.

Sale at 11.00 A. M. Terms By

ALBERT H. FRITZ, Est.

and

EARL H. HARNISH

Route 2, Quarryville, Pa.

Kreider and Diller,
Auctioneers & Sale Managers

Lunch Available by Farm Women's Society #21.