

SALE REGISTER

(From page 13)

Sat., Mar. 3 — 12:00 noon
Full line of modern farm equipment. By Harry H. Noll 340 Centerville Rd Lancaster Three miles W. of Lancaster off Rt. 30. Diller & Kreider, aucts.

Sat., March 3 — 12 noon
Pub. sale of farm mach. and livestock. By Raymond M Sangrey on S. Jackson St., just south of Strasburg Boro Two tractors with full line of equipment, 35 tons corn, 300 bu barley, 15 holstein bulls, 20 shoats J. Omar Landis, Auct

Wed., Mar. 7 — 11:00 a.m.
Pub. Sale of full line of farm equipment By Earl Harnish. Along Rt. 222 a mile South of Quarryville. Diller and Kreider, Aucts.

Thurs., Mar 8 — Pub Sale
of Farm Equip By Frank Seibel, one mi W of Lexington off Rt 501 N of Lititz. Shreiner, Auct

EXTRA LARGE Public Sale SAT., FEB. 17

AT 9:30 A. M.

Frank R. Boyer & Son heating contractors are going out of business.

All Inventory & Shop Equipment

w'll be offering at public sale on the premises just west of the Manheim Pike, situated along the Harrisburg Pike known as the 230 By-pass. (Come early) We have the goods.

Frank R. Boyer & Son OWNER

Elmer H Kauffman, Auct

PUBLIC SALE FRIDAY, FEBRUARY 16

On the premises 1/2 mile west of Oyster Point, situated between the Marietta Pike and the Landisville-Oyster Point road. Folks traveling by Elizabethtown Bus get off at Sauder's Machine Shop.

FARM IMPLEMENTS

Farmall (A) tractor with 2-way plow, cultivator and tobacco hoer, John Deere tool bar cultivator on rubber, Massey Harris 7 ft semi-mounted mower, 8 ft and 9 ft. steel rollers, McDeering 8 ft cultipacker, rubber tire wagon with bed, 2 tob wagons, manure spreader on steel wheels, two 2-horse grass mowers, tobacco planters, 24 disc, grain drill, roller harrow, spring harrow, orchard sprayer on truck, scraper, walking plow, dung sled, potato plow, 3 range shelters with feeders, electric & gas brooders, 6000 tobacco laths, shears, spears, Manich press, stripping room stove, 2 hole corn sheller, 600 lb platform scale, orchard ladders picking bags, 400 apple crates, wheelbarrow, grind stone, vices, chicken crates egg crates, Craftsman 7 in bench saw and 6 in jointer, digging irons, shovels, forks, picks, chains, tools, saws etc

HOUSEHOLD GOODS

Jesse Frenchs Sons piano, in good condition; small coal and wood stove, extension table, chairs, rocker, blanket chests, trunk, wardrobe, old chest of drawers and washstand secretary, antique high dry sink, lap robes, oil lights lanterns, clock, crocks, berry boxes 1/4 and 1/2 peck measures, ice cream freezer and lots of articles not listed

Sale at 12:30 p.m. by
MARIAN A. YOUNG
Elmer H Kauffman, Auct

Sat., Mar. 10 — 11:00 a.m.
Pub. sale of Livestock, farm eqpt., household goods. By Morris Lowe, 3 mi. E. of Manheim. Shreiner, Auct.

Wed., Mar. 14 — 12:30 pm.
Holstein Dispersal and sale of farm machinery. By Amos Z Martin, one mi East of Old Philadelphia Pike on Rt 772 Shreiner, Auct.

Wed., Mar. 14 — 1 00 p.m.
Pub sale of full line of farm equipment & milking equip-

Stanley H. Deiter

Auctioneer & Appraiser

LAMPETER

Ph. Lancaster EX 4-1796

ment by Raymond H. Miller along road from Oak Shade to Tailorya. Kreider & Diller Aucts.

Sat., Mar. 17 — 1:30 p.m.
Pub. sale of real estate consisting of 33 acres and light farm equipment, along road from Marticville to Smithville, 1/2 mi. east of Marticville by Aaron R. Hess. Kreider & Diller, Aucts.

Patronize Our Advertisers.

When planning to buy or sell call

Henry E. Shreiner

AUCTIONEER

And

Real Estate Salesman

Dial: MA 6-6490 Lititz R2
EX 7-3571

FARM FOR PROFIT

WITH



UNIPEL Fertilizers

CONTACT US FOR COMPLETE DETAILS

P. L. ROHRER & BRO., INC.

Distributor for Lancaster County Area

SMOKETOWN

Phone Lanc. EX 7-3539

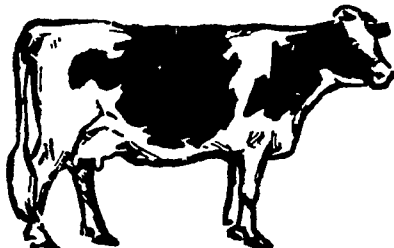
Public Sale!

—OF—

Livestock and Farm Implements

SAT., FEB. 17, 1962

ONE HALF MILE NORTH OF REFTON, ALONG ROUTE 222, STRASBURG TOWNSHIP.



36 Head

HOLSTEIN

Dairy Cattle

25 Cows, mostly fresh or close

11 HEIFERS BRED FOR FALL

Bangs and T.B. Tested on Area Plan. Health Charts furnished

7 Head of Mules

8 SHOATS 4 SHEEP

3 Allis Chalmers Tractors

"WC" on Steel, "WD" on Rubber, in Top Condition. Model "B" on Rubber, with Plow and Cultivator, Grove Wagon with Bed, 66 New Holland Baler, 7-Foot John Deere Mower, 5-Foot John Deere Mower, 5 Foot McCormick Mower, Model 50 Cunningham Crimper, McCormick Corn Binder, New Idea Manure Spreader 8-Foot McCormick Grain Binder, New Idea Husker-Shredder, 16-Inch Papec Silage Cutter, McCormick Hay Rake, David Bradley 28-Disc Harrow, McCormick Sulky Plow, Wiard 106 Walking Plow, 2-Bottom A. C. Plow, 2 Riding Cultivators, 3-Section Harrow, Log Roller, J. D 999 Corn Planter, Ohio Thomas Grain Drill, 6-Row Niagara Duster, Weeder, Potato Planter, Gr-d-er, Digger, Tobacco Wagon, Dump Rake, Baler Cart

DIESEL ENGINE (Good Condition)

2-Unit Sears (Belly Type) Milker, Milker Pump and Pipe, 12 Can Wilson Milk-Cooler, 20 Milk Cans, Twin Tubs, 30-Gal. Water Heater

MISCELLANEOUS EQUIPMENT

David Bradley Cham Saw, Extension Ladder, Litter Carrier and Track, 6 Gas Brooder Stoves, Feeders, Compressor, Long Jack Shaft with Pulleys, 12 Bales of Baler Twine, Harness Platform Scales, 110 Volt Generator, Electric Chippers, 2-Plate Kitchen Range, Stripping Room Stove, Forks, Shovels, Log Chains, Hog Troughs, Feed Cart

EAR CORN

Sale at 11 00 A M Terms Cash.
Diller & Kreider, Auctioneers

JOHN E. RIEHL

Route 1, Willow Street, Pa.

Come Early! Plenty to Eat No Hucksters
Not Responsible for Accidents.

Wed., Mar. 21 — 12 noon. High Mount, approx. 3 miles Pub. sale of farm equipment N. of Hellam. Jacob A. Gilbert, Auct.

Buck to Holtwood. Kreider & Diller, Aucts.

Thurs., Mar. 22—11 a. m.

Pub. Sale of poultry & farm equipment and household goods. By Levi Weaver, one noon - Pub Sale of Farm mi W. of Neffsville on Rt. Machinery by Seth J. Sentz 501 Shreiner, Auct.

Thurs., March 22 — 12:00 noon - Pub Sale of Farm mi W. of Neffsville on Rt. Machinery by Seth J. Sentz 501 Shreiner, Auct. at Hellam Rt. on road leading from Kreutz Creek to Patronize our advertisers

229TH GARDEN SPOT SALE—THURSDAY, FEB. 15 LANCASTER, PA.

Sale held on the J. M. Brubaker Farm located in Village of Willow Street, 4 miles south of Lancaster, Pa. Just off Routes 72 and 222. Watch For Signs.

75 REGISTERED HOLSTEINS

(Nearly all just fresh or close springers — Bred & Open Heifers — Service Bulls All Bang's Cert & T.B. Accred, nearly all Bang's Vacc and eligible to ship into any state anywhere Mastitis tested, Vacc against shipping fever

Never more production offered than in the early entries: below!! • A "VG" 660-lb, 3 yr 2x dtr of Hillmac Sovereign due at sale time to Jonabell Rockhevn H. G Has kell Jr., Chadds Ford, Pa • A "GP" 545-lb, 3 yr. 16,309 M dtr of Royal Sussex Progressor due after sale to Skokie Design James L. Frank, Newtown, Pa • A 509-lb, 16,168 M. 6 yr. dtr. of Knollwood Double Chieftain due just after sale to Osborndale Ty Vic Sir Johanna. J Earle Yerkes & Son, Pipersville, Pa • A "GP" 543-lb, 5 yr old in 305-da. 2x dtr of Lawara Rag Apple Standard out of 663-lb dam Due sale time to son of ABC Reflection Sovereign Albert Magness, Bel Air, Md • A 553-lb, 305 da "GP" 4-yr. dtr of BDI Genino Lad out o' dam with many recs up to 774 fat. One 2 yr dtr. with 501 fat Due sale time to Grayview Skyliner Paul Reinhart Jr Alexandria, Pa • A 505-lb dtr of Penstate Star Emperor due after sale to Osb Ivanhoe She also "GP" Cuthbert Nairn's Sons, Douglass ville, Pa • A "GP" dtr of Hilop King Pilot with 417 F, 3 yrs and out of good record dam Due by sale time to C C Proud Norseman C Douglas's Buck, New Castle, Del • A 503-lb dtr of Creston Twenty Grand due sale time to a 676 lb Sovereign Cochran son Riemenschneider Bros. Forest Hill, Md • Yrig son of UNH Master Echo (Sold to C C for \$10,000) out of "GP" dam with many records up to 847 F., 20,614 M. 3 6% Here's one to really sire production John T. Martin, Jr, Portage, Pa This is only a few— There will be many more to choose from with equal quality. Make sure you attend this Garden Spot Sale!

Sale starts 12 00 Noon Lunch Available Catalogs R AUSTIN BACKUS, INC., Sale Mgrs. and Auctioneers, Mexico, N. Y. EARL L. GROFF, Local Rep., Strasburg, Pa.

SALES .. SALES .. SALES

J. OMAR LANDIS.. Auction Service

R. D. 1

MANHEIM, PA.

665-4806

Complete Auction & Liquidation Service

LIVE STOCK — EQUIPMENT — AUTOMOBILES
REAL ESTATE — PERSONAL PROPERTY

Saturday, February 17, Dairy and Farm Equipment Sale for Menno Ober, located three miles North of Manheim along Route 72. 40 Dairy cows, 8 heifers and a full line of farm equipment. Sale starts at 12.00 noon.

Thursday, February 22, Dairy Cattle, Hogs, and Farm Equipment for Joseph Ginder, located on the Colebrook Road between Mastersonville and Colebrook. 15 cows, 20 suckling pigs, ear corn and a full line of equipment. Sale starts at 11:00 a. m

Monday, February 26, Farm Equipment Sale for Harry Steffy, located on the road from Manheim to Lititz, midway between the two boroughs. Sale starts at 12:00 o'clock Noon.

Tuesday, February 27, Dairy Cattle and Farm Equipment Sale for J. Samuel Sherer, located 3 miles north of Mount Joy, Lanc Co., Pa. Turn North off Route 230 at Grove's Meat Market. Clean Sweep Sale. Sale starts at 12:00 noon

Saturday, March 3, Cattle and Farm Equipment Sale for Raymond Sangrey, located on South Jacob Street, just south of Strasburg Boro Tractors, Equipment, 15 Holstein Bulls, 20 Shoats, ear corn and some household goods. Sale starts at 12 00 o'clock noon.

Monday, March 5, Farm Equipment and Livestock for Jonas Heisey, located two miles south of Manheim along Route 72. Full line of Farm Machinery. Sale at 12:00 o'clock noon.

Tuesday, March 6, Farm Equipment and Dairy Cows for Daniel Flory, located 1/4 mile North of Elstonville. Lanc. Co., Pa. Full line of equipment and 30 Dairy Cows Sale starts at 11:00 a. m.

Saturday, March 10, Real Estate, Farm Equipment and House hold goods for Frank Newcomer. Located on the road from Millersville to New Danville. 62 acre farm and equipment. Sale starts at 12:00 p.m.

Monday, March 12, Farm Equipment and Holstein Bulls for John Barton, located near Milton Grove at the Cherry Hill School. Turn north off 230 at Kounty Kitchen Sale starts at 12 30 p m

Tuesday, March 13, Farm Equipment and Dairy Cattle Sale for Victor Gish, located 4 miles northeast of Manheim North of White Oak Dam on road to Mt Hope. Sale starts at 11 00 a. m.

Thursday, March 15, 30 head of Dairy Cows, Full line of equipment, farm equipment and Dairy Cattle for Robert Hossler, located south of Manheim along the road from the Auto Auction to the Lancaster Junction Sale starts at 12:00 o'clock noon.

Monday, March 19, Farm Equipment Sale for Harry Oberholtzer, located 1 1/2 miles South of Manheim along the Fruitville Pike. Sale starts at 12:00 o'clock noon.

Saturday, March 31, Large Consignment Sale, sponsored by the Men's Work of the Florin Church of The Brethren. Sale will be held near Florin. More information later.