

● Tobacco Quotas
(From page 1)

adjusting inequities. The 1962 farm allotments will be based on the tobacco acreage history for the years 1957 through 1961. Notices of individual farm allotments will be mailed to farm operators prior to the referendum

If two-thirds of the cigar filler (type 41) tobacco growers voting in the Feb 20 referendum favor marketing quotas, they will be in effect for the 1962, 1963 and 1964 crops, and price support will be made available to growers. USDA announced that the level of support for the 1962 crop will be 26.3 cents per pound if two-thirds of the growers voting approve quotas.

● Freeman Speaks
(From page 1)

our citizens and should be thoroughly understood State level programs also may need review in the light of

Federal proposals" Secretary Freeman's address and discussion session are scheduled for 1:30 p m in the Farm Show Building It will be his first visit to Harrisburg as Secretary The meeting is open to the public without charge

Milk Pricing Hearing Slated

Proposals to amend the Federal milk marketing orders regulating milk handling in the Philadelphia, Pa., and Wilmington, Del, marketing areas will be considered at a hearing in Philadelphia Feb 9, the U S Dept. of Agriculture announced today

The hearing, being called at the request of a handler organization will convene at 10 a m in the Sylvania Hotel, Juniper and Locust Sts.

Principal proposals being brought before the hearing would

1 Amend pooling provisions to modify the 'unit' system now used for determining the pool status of country receiving plants.

2 Use the actual weight, rather than the "skim equivalent", in figuring amounts of added milk solids in fortified milk and dietary products, for classification

3 Clarify the rule classifying milk shipped to non-pool milk plants for use in commercial nondairy food products

Try to be prompt and forthright is always good advice to any man or woman. —Wm Feather

APPLY ON FROZEN GROUND



MARTIN'S
Agricultural and Crushed
LIMESTONE

Ivan M. Martin, Inc. New Holland ELgin 4-2112
Terre Hill Hillcrest 5-3455
BLUE BALL, PA. Gap Hickory 2-4148

FARM FOR PROFIT
WITH
ORTHO
SCIENTIFIC PEST CONTROL

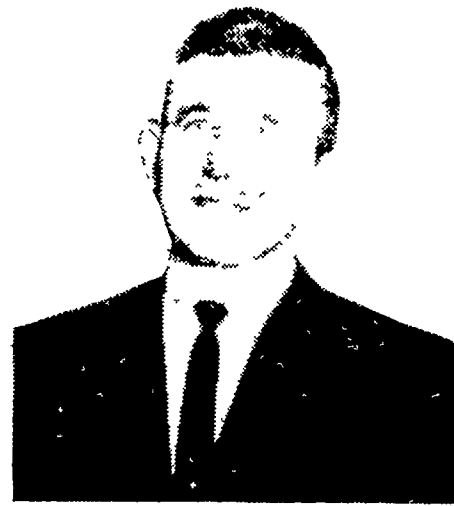
UNIPEL Fertilizers
CONTACT US FOR COMPLETE DETAILS

P. L. ROHRER & BRO., INC.
Distributor for Lancaster County Area
SMOKETOWN Phone Lanc. EX 7-3539

Successful Dairyman Says:

"Farm Bureau's DARI-PAK Program Right For Me"

James G. Kreider, Quarryville, R. D. 1, is feeding his entire herd of "48" Holsteins, Farm Bureau's 14% DARI-PAK.



He especially likes:

1. CONVENIENCE & ECONOMY — I save time and labor!
2. MILKMAKING POWER — a top milk producing ration!
3. PALATABILITY — quick, thorough clean-up!
4. GRAIN EXCHANGE — retail price for my grain!

GET THE EXCITING DETAILS of Farm Bureau's popular DARI-PAK Dairy Ration. Now available in 14% and 16% - - tasty Coarse Texture or palatable Pellets. You'll like the many advantages offered by our complete dairy feeding program. The COWculator, miniature electronic brain, will accurately determine the Maximum Profit Feeding level for each cow in your herd - - takes the guesswork out of feeding.

Qualified FIELDMEN are anxious to serve and assist you in designing a PROFITABLE DAIRY FEEDING PROGRAM.

START TODAY... FEED THE FARM BUREAU WAY!



For Prompt, Courteous Service,
In Bags or Bulk, Call . . .

Lancaster EX 4-0541 Manheim 665-2466

New Holland ELgin 4-2146 Quarryville STerling 6-2126

Start With The BEST FOR
EGGS
MEAT

DAY-OLD and STARTED CHICKS

CAREY and DEMLER Leghorns for high-quality White Eggs. Carey again won "Highest Egg Quality" award (85 Haugh Units) competing with best American breeders in official Random Sample Tests

MERRYKNOLL Black Sex-Links and Anderson Golden Sex-Links for Big Brown eggs. Also Cobb's White Rocks

FOR MEAT . . . Cornish-Cobb White Rock Cross and Vantress-Cobb Cross

Burling personally supervises every step from breeding-flock management to hatching and delivery of YOUR chicks NEW Folder.

CALL or WRITE
"BILL" BURLING
OXFORD, PA. • Dial: 932 8 286



WITH FIELD TESTED
WIK
Reg. Trade Mark
INSECTICIDE APPLICATORS

RIDS CATTLE OF LICE & FLIES

Effective as Spraying—
Costs 80% Less

Cattle treat themselves providing year-round protection from profit cutting pests as a result you get bonus gains of 50 lbs. These bonus beef lbs are produced for just 3 1/2¢ per lb when you use the sturdy farm engineered WIK APPLICATOR plus TOX-O-WIK insecticide

Get complete details without obligations by writing

Mylin R. Good
Manheim R1 Ph. TW 8-8502