

Our More Sales Reported By News Service

HARRISBURG — Market news reporting at Pennsylvania livestock auctions has been expanded, according to John L. Rainey, director of the bureau of markets in the State Department of Agriculture.

Effective January 1, four additional auctions were added to the livestock market news program. They are the Mason-Dixon Auction, Stewartstown; York (Thomasville); Silver Springs, Mech-

anicsburg; and Lebanon Valley, Fredericksburg.

Up to this point, the reporting of livestock volume and prices has been confined to two auctions in Lancaster County, and the Lancaster Terminal Livestock Market under terms of a contract with the U S Department of Agriculture.

Revar Inez Pabst produced 16 083 lbs milk and 615 lbs buterfat in 271 days on twice daily milking as a 5-year-old Glenalcomb Supreme Joan 16,511 bs. milk and 676 lbs butterfat in 283 days on twice daily milking as a 7-year-old Both are Registered Holstem cows.

Specialist Say Early Cut Hay Makes More Milk

Cows will give more milk when fed early cut, highly digestible hay than when fed hay that is cut later and is less palatable. This was reported at the recent Grassland Conference held at the Pennsylvania State University.

Earl M. Kesler, researcher with the Agricultural Experiment Station at Penn State, said he found that cows ate 55 less pounds of forage per cow per day from

cuttings made 15 days after the first cutting. At the same time, digestible energy of the hay decreased an average of six units.

Dr Kesler and Sidney L. Oldsmoø reported produced 59 pounds more milk from mixed hay (alfalfa, timothy and clover), than from orchard grass alone. All cows in the tests were fed equal amounts of grain.

Early harvest of the first cutting also allowed more time for growth of second and third cuttings, producing better quality feed for the season's yield.

Kesler indicated that ear-

ly harvest means less forage produced per acre. To offset loss of yields in Central Pennsylvania, the studies show that legumes should be cut first when in late bud or very early bloom. With this harvesting schedule, high quality nutrient yields will be nearly maximum.

The studies have also shown that common orchard grass must be cut very early — sooner than most dairymen can get started — to make acceptable quality feed for high producing cows. The orchard grass matured about two weeks earlier than the alfalfa-timothy clover mixture.

AS SEEN AT THE FARM SHOW LINCOLN WELDERS

180 amp. complete with assessories

\$125.00

READY FOR IMMEDIATE DELIVERY

DRESSEL WELDING SUPPLY, Inc.

2000 Columbia Ave. (Lincoln Hwy. West)

PHONE: EX 7-1312

225 amp. complete with assessories

\$155.00

LANCASTER, PA.

GET YOUR CHICKS OFF TO A FLYING START!

WITH

FLORIN 1962 Chick Starter



Get The Full Details On Our Growing Program For Replacement Pullets

Call Mt. Joy OL 3-2411 Today!

WOLGEMUTH BROS., Inc.

FLORIN, PENNA.

FARM FOR PROFIT WITH



UNIPEL Fertilizers

CONTACT US FOR COMPLETE DETAILS

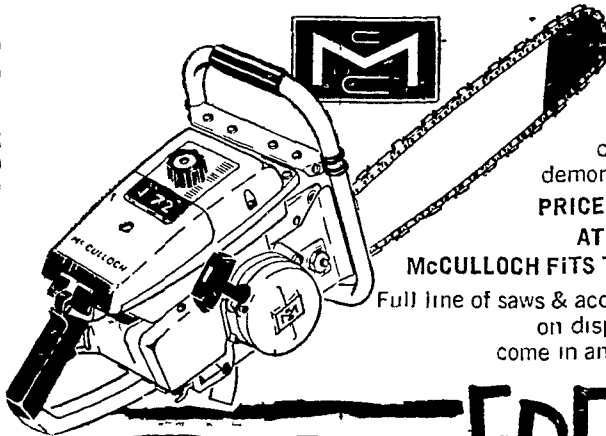
P. L. ROHRER & BRO., INC.

Distributor for Lancaster County Area

SMOKETOWN

Phone Lanc. EX 7-3539

McCULLOCH FREE! WINTER SPECIAL!



Come in today or call for a demonstration

PRICES START AT \$149.95

McCULLOCH FITS THE JOB

Full line of saws & accessories on display now come in and see us

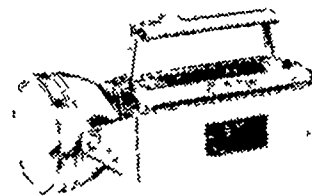
FREE!

RAY-O-VAC HUNTER'S LANTERN

Complete with 3" reflector for piercing beam. Signal button switch. A \$4.95 value—free! With the purchase of any new McCulloch saw.

(Offer good till March 1st, 1962)

DON'T MISS THIS GREAT FREE OFFER



LANDIS BROS., Inc.

MANHEIM PIKE

LANC. EX 3-3906

Poor Plugs Gas Wasters Tests Show

If you think you can tell when it's time to change the spark plugs in a tractor by the sound of the engine, better take a good look at the results of a recent tractor clinic over in Biglerville.

There, some 19 area farmers who brought their tractors in for free dynamometer tests learned a startling fact about spark plug performance in farm tractors—the plugs actually can be wasting a lot of gas and power without showing any signs of misfiring.

One Pennsylvania farmer, in fact, was astounded to see the horsepower in his tractor almost double when new spark plugs were installed.

Not only did the tractor's horsepower increase from 20 to 39.5 when new plugs were installed in place of those which had been in the tractor for three years, fuel economy increased an impressive 20 per cent—a gas savings of twenty cents on a dollar in this particular case.

Obviously the results obtained here are an extreme case. But how about the other 18 tractors tested?

Only one showed no improvement in either horsepower or fuel economy when new plugs were installed. In every other case, new plugs made a difference either in fuel economy, horsepower, or both!

Average horsepower gain for all the tractors tested was a significant 9.1 per cent; average increase in fuel economy 9.6 per cent.

Purpose of the tests—which are being conducted in major farm areas throughout the United States—is to show farmers how worn spark plugs can waste gas and power without the farmer being aware of the condition—enough in most cases to pay for new plugs many times over.

Patronize our advertisers.

NEW Sweet BULK 'N FLAKES NEW

FOR MILK COWS... DRY COWS... HEIFERS



A Milk-Producing Addition To Any Dairy Ration!

EXTRA RICH IN MOLASSES EXTRA BULKY

New Sweet Bulk 'N Flakes stimulates rumen activity . . . to help you get top production from every cow in your herd. Fortified with vitamins and minerals . . . contains no chopped hay, screenings, or fillers.



Contains SOYBRAN FLAKES... the greatest dairy feeding discovery in 25 years!

L. J. Denlinger Co. PARADISE

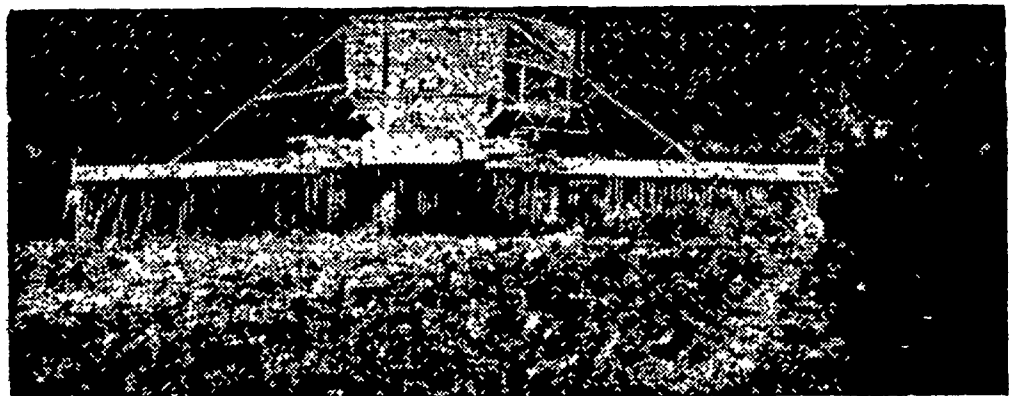
Eby's Mill LITITZ

Hempfield Mills EAST PETERSBURG

Ross H. Rohrer & Sons QUARRYVILLE

Blend & McGinnis ATGLEN

MARTIN'S LIMESTONE



Order your Limestone now for even spreading by our modern spreaders. Quick Service Free Soil Tests Quality Limestone

SPREAD IT NOW ON FROZEN GROUND

Ivan M. Martin, Inc., Blue Ball, Pa.

Telephones: New Holland ELgin 4-2112

Terre Hill Hillcrest 5-3455

Gap Hickory 2-4148