

Best Food Buys Weather Turns Surplus To Scarcity

The aftermath of that recent cold wave which reached far into the vegetable and citrus growing areas of Texas and Florida brings disheartening news for the budget-minded foodshopper. Surplus was turned to scarcity by the difference of a few degrees on the thermometer and as a result higher prices prevail on many of our favorite fresh vegetables, reports Tom Piper, Penn State Extension Marketing Agent.

Texas was hit hardest. Their fresh-market citrus crop was wiped out; crops of beets, broccoli, cabbage, carrots, cauliflower, lettuce, spinach and onions were severely damaged and losses were heavy. All spring crops — sweet corn, potatoes, tomatoes and green peppers — that were up will have to be replanted, delaying the date of their readiness for market.

Damage in Florida was confined primarily to the tender vegetables and higher prices are expected on sweet corn, cucumbers, parsley, spinach and leafy greens. Loss of the Texas crop will boost demand for the production from Florida and prices will be bid higher. Onion prices are higher on prospects that the spring crop will be reduced in size. Potatoes remain in plenty.

● Cooking for Crowd

(From page 7)

½ cup grated lemon rind
7 pounds cream cheese
2¼ pounds (5 dozen) packages coconut bars

Dissolve gelatin in boiling water. Stir in lemon rind and chill until partially set. Soften cream cheese in mixer at low speed. Add gelatin mixture gradually, beating until smooth after each addition. Cover bottom of a 12x-8x2 inch pan with 20 coconut bars. Spread half of the cheese over cookies and top with 20 coconut bars. Spread remaining cheese mixture over cookies and top with remaining coconut bars. Chill overnight. Cut into 48 squares. Garnish each square with a maraschino cherry if desired.

**MASTER FARMER
RAT BAIT**
&
**CATTLE LOUSE
POWDER**
Both Guaranteed
to do Their Job
**ORGANIC PLANT
FOOD CO.**
GROFFTOWN ROAD
PHONE EX 2-4963



AUTOMATIC DELIVERIES!

Based on the severity of the weather and your "degree-day" needs. No need to call us — and no worry about running short.

GARBER OIL CO.

105 Fairview St.
MOUNT JOY, PA.
Ph. OL 3-2021

● Poultry Co-op (From page 1)

dressing plant at Coatesville began piling up heavy losses. The board closed the plant and began exploration of the possibilities of merger with another cooperative.

Proposals were solicited from both Farm Bureau and the Eastern States Farmers Exchange. Farm Bureau submitted a proposal to acquire the Coatesville Cooperative in an exchange of stock program. Eastern States proposed to "assist through an investment of a minimum of \$50,000 in Producers Cooperative Exchange. The exact amount, in case a higher amount would be more satisfactory, and the form of investment could be determined upon acceptance of the principle."

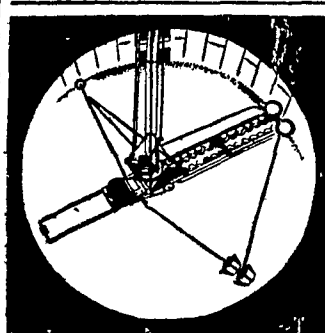
On December 8, last year, the board of directors of Producers Exchange voted to accept the Farm Bureau proposal, and the decision was presented to the membership at the annual meeting of the cooperative on December 12. At that time, members instructed the board to draw copies of each proposal and mail the copies to all stockholders.

Copies of the resolutions were mailed during the first

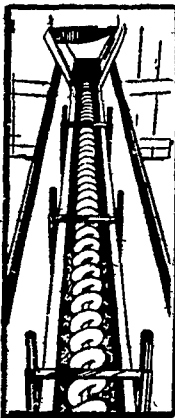
week of January with a letter of explanation from John H. Herr, cooperative secretary.

Herr reminded members, "Whether or not you are an active shipper, you still have a responsibility as a stockholder."

VanDale MOST COPIED SILO UNLOADER



U.S. Patent No. 2,719,058



AUTOMATIC FEEDING TOO!

Combine automatic feeding with your silage unloading. Ask about the VanDale Automatic Bunk Feeder.

"Imitation is the sincerest form of flattery," and nowhere more true than in the field of automatic silage unloading. VanDale is the most copied, most sought after silo unloader in the history of mechanized choring. VanDale is first in production, sales and field experience. Every notable design improvement in the silo unloader industry has been made, by VanDale, for the benefit of the farmer. Time-tested, farm-tested and proved, VanDale pound for pound and dollar for dollar is your best value—by far—for the money.

VANDALE IS DESIGNED, ENGINEERED AND MANUFACTURED TO DO ONE JOB BETTER THAN OTHER SILO UNLOADERS!

Unload corn or grass silage, packed or frozen, from upright silos. In 3 and 5 H.P. Heavy Duty and "Thrower" models, with or without optional Booster unit.

*VanDale is the registered trade-mark of VanDale Farm Machines, Inc.

L. H. BRUBAKER

350 STRASBURG PIKE — LANCASTER, PA.

R. D. 3, Lititz, Pa.

Ph. Lanc. EX 7-5179

Strasburg OV 7-6002 Lititz MA 6-7766

Let Us Grind and Mix Your Grain Into A Money-Making Egg Feed Using Ful-O-Pep Layer Concentrates

Ful-O-Pep Layer Concentrates are widely known to have the extra nutrients needed to convert local grains into powerful egg-building feeds.

We have the equipment—a modern grinder and mixer that will meet your exacting requirements for texture, desired protein level, and availability of grains.

There are several Ful-O-Pep Concentrates and hundreds of proven formulas to choose from. Let us help you make your egg production more profitable.

Stop in and talk with us

KIRKWOOD FEED & GRAIN

KIRKWOOD, PENNA.

Ph. L.Ambert 9-2132

Shady Vista Burke Velvet owned by Earl L. Umble, Atglen, produced 13,869 lbs milk and 550 lbs butterfat buterfat in 297 days on twice daily milking as a 7-yr-old. She is a registered Holstein.

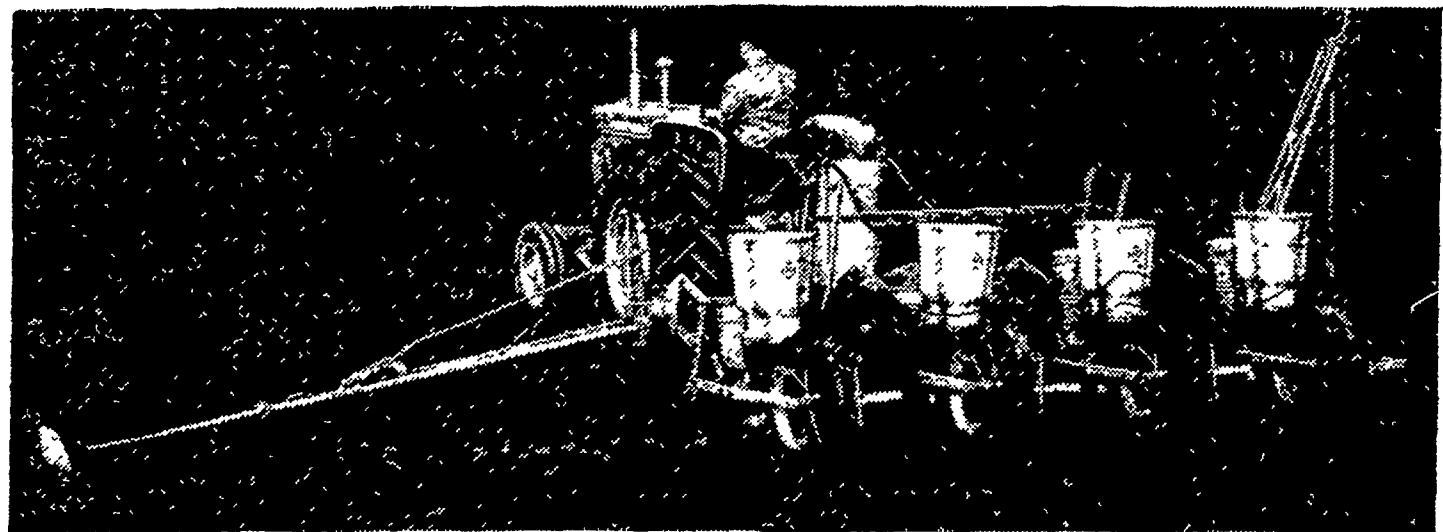


The Most Famous Name
In Corn

Pfister Associated Growers

R. D. 3, LANCASTER
Phone TW 8-7121

NOW BIG-YIELD PLANTING WITH SINGLE-ROW ACCURACY



1. Each Row-Flex planter unit plants at its own uniform depth—regardless of uneven ground.
2. Buy a 4-row unit this year . . . make it a 6-row planter later—just add 2 more units.
3. Plant—band fertilize—spray pre-emerge for weed control . . . all uniformly for clean stands, fast growth.

ALLIS-CHALMERS

Sales and Service



Ask us about the Allis-Chalmers plan to finance your time purchase of farm equipment.

L. H. Brubaker
Lititz, Pa.

Nissley Farm Service
Washington Boro, Pa.

N. G. Myers & Son
Rheems, Pa.

L. H. Brubaker
Lancaster, Pa.

Grumelli Farm Serv.
Quarryville, Pa.

R. S. Weaver
Stevens, Pa.

Snavey's Farm Service
New Holland, Pa.