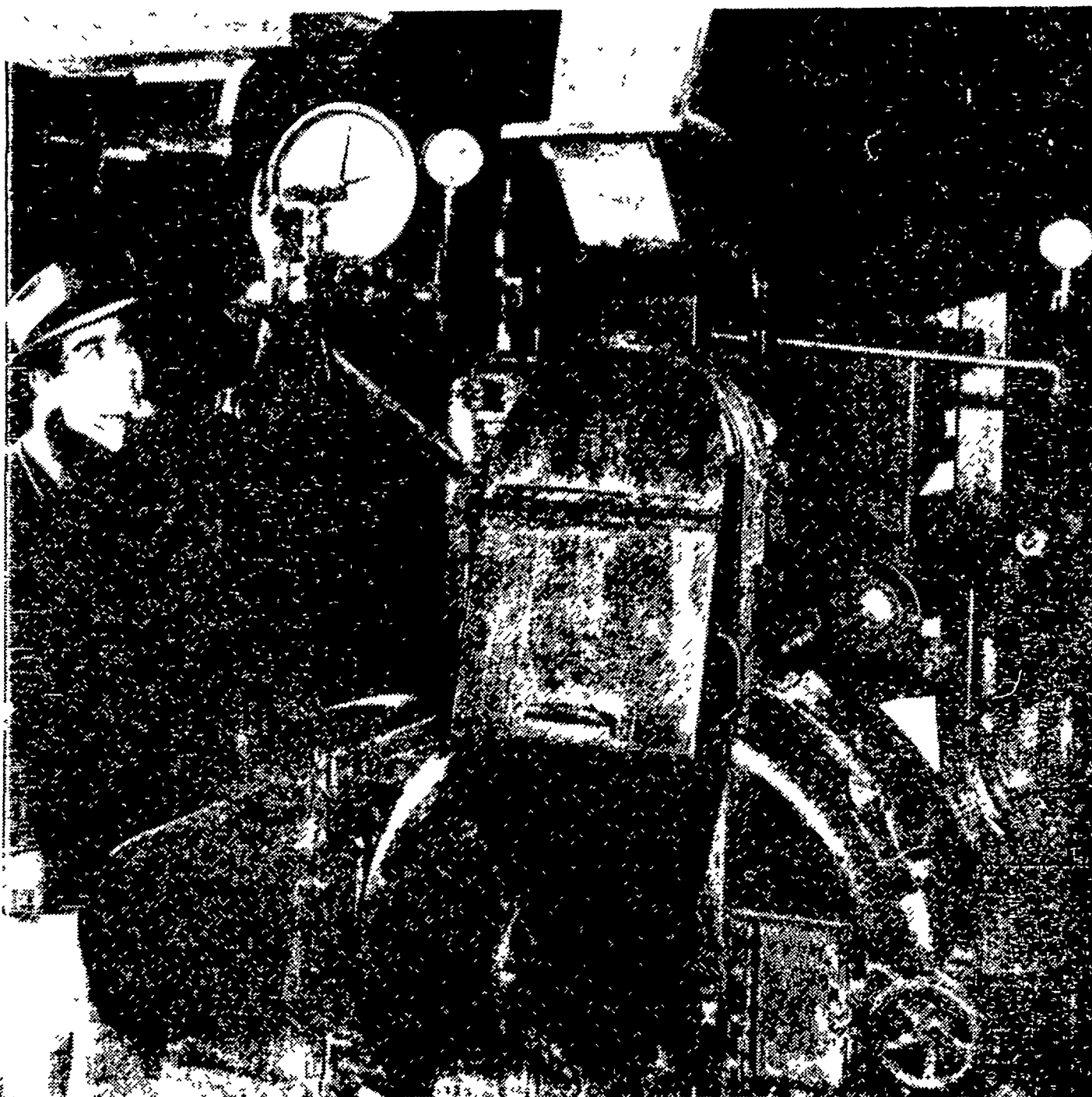


Attention Dairymen:

ANOTHER "Farm Bureau" FIRST!!

We're The "First" Feed Mill In Lancaster County To Install The New Sprout-Waldron "Molasses Blending Device" On Our Pellet Mill At New Holland!



Reuben Hess, Branch Manager at our Modern New Holland Feed Manufacturing Plant, is justifiably proud of the Brand New "Molasses Blending Device" recently installed on our Pellet Mill.

What Does This Mean To You?

NOW, .. Farm Bureau DARI-PAK PELLETS (14% & 16%)
Have FULL 10% (200 lbs.) Molasses Per Ton!

This New Sprout-Waldron "Molasses Blending Device" thoroughly blends Molasses through the entire pellet - - not just sprayed on the outside. They smell and taste so-o good - - your cows will really go for them. Added palatability is an important advantage with 10% Molasses - - - even more important, the extra Molasses will encourage increased water consumption - - - this means more milk per cow.

GET THE EXCITING DETAILS of Farm Bureau's DAIRY FEEDING PROGRAM, Today!
Find out why so many of your neighbors are switching to Farm Bureau Feed.

START TODAY... FEED THE FARM BUREAU WAY!

For Prompt, Courteous Service,
Always, Call

Lancaster Manheim
EX 4-0541 665-2466

New Holland Quarryville
ELgin 4-2146 STerling 6-2126



● Outlook

(From page 1)

county and on the state level.

The Extension program of the future will not overlook the original intent of the service — to assist the farmer and homemaker in every way to increase the net income of the family size farm and to guide the farmer in selecting enterprises according to his facilities and abilities.

As for Dairying in particular, even though support prices are higher than a year ago we are getting less for our milk. The reason is that class I milk prices are based on formulas that ignore supports.

Dairy prospects are not bright because supplies are building up faster than the use of milk. What does this mean? Lower prices and a narrow margin of profit.

W. Martin Muth, work unit conservationist, U. S. Department of Agriculture.

The Lancaster Work Unit of the Soil Conservation Service, United States Department of Agriculture, looks forward toward a productive



W. MARTIN MUTH

year for soil and water conservation accomplishments in cooperation with the Lancaster County Soil Conservation District.

Continuing interest in this phase of agriculture, as evidenced by the farmers' requests for assistance, will forward the protection of more of our agricultural land in 1962.

George W. Myers, teacher of Agriculture, Lampeter - Strasburg High School and President, Pennsylvania Vocational Agriculture Teachers Association.

More boys from small farms and from non-farm homes will be enrolling in the Vocational Agriculture program. They will be seeking training which will help prepare them for employment in the increasing number of off-farm agricultural occupations. They will receive farm work experience.



GEORGE W. MYERS

on efficient well-established farms through the cooperation of leading farmers in the community with the local teacher of agriculture. City and suburban school districts will give further consideration to the establishment.

(Turn to page 9)