

## ● Hay Show

(From page 1)

Hay exhibitors at the scheduled to begin at 9:45 a.m. August 1961 hay show at Hershey, will be featured during the afternoon program.

A full day of panels and talks by forage experts is scheduled to begin at 9:45 a.m. and continue until 2:30 p.m. Further information is available at the office of the County Agent.

**MASTER FARMER  
RAT BAIT  
&  
CATTLE LOUSE  
POWDER**  
Both Guaranteed  
to do Their Job  
**ORGANIC PLANT  
FOOD CO.**  
GROFFTOWN ROAD  
PHONE EX 2-4963

## Neighboring 4-H Clubs Guests Of Co. Council

Holiday festivities for the Lancaster County 4-H council will include a party for all 4-H members in the county. Included in the festivities

will be 4-H'ers from Lebanon and Chester Counties.

Games and square dancing will begin in the Refton farm hall at 7:30 p.m. on December 27. Refreshments will be served by the county council.

## Holstein Club January Meet Is Cancelled

No January meeting is planned by the county 4-H Holstein club. All business for the year has been completed, and the date for re-organization has been set for the night of February 22, according to James Kettering, reporter for the club.

The meeting will be held in the auditorium of the Lancaster County Farm Bureau building on the Diller-ville Pike, Lancaster.

Lancaster Farming, Saturday, December 23, 1961—9

## ● FHA Awards

(From page 1)

home safety education, also in the Department of Public Joy.

Instruction.

Miss Musser is a senior homemaking student at Don-egal Union High School, Mt.

## CASHMAN Hi-Cash score three great 1960-61 Contest PRODUCTION PULLETS Wins!

Year after year (for 15 years) Cashman Hi-Cash Pullets have stood at or close to the head of the procession of Contest winners. We thought they'd done their best—but we were wrong! The 1960-61 year was, in some respects, the best Hi-Cash year First we could announce the 3-year Summary Award presented by the Missouri Random Sample Test. We also had the highest net profit pen at British Columbia Random Sample Test and the highest pen in the 1960-61 Missouri Standard Test. Why not line up with Hi-Cash and "cash in" on these winning pullets?

For more information call

## WEAVER'S HATCHERY

LITITZ, R. D. 4

Ph. RE 3-0885

**SAVE HALF  
ON  
EVERY CALF**



with the  
**WAYNE CALF FEEDING  
PROGRAM...**



- Fewer Pot-Bellied Calves!
- Smooth, Growthy Calves!
- Sell Up To 1,200 Lbs. More Milk
- Stop Milk Feeding In 3 Days!
- Reduce Digestive Troubles!
- Endorsed By Top Dairymen!



**Fortified With Antibiotics**

**MOUNTVILLE  
FEED SERVICE**  
R. D. 2, Columbia

**J. K. STAUFFER & SON**  
Lawn & Bellaire

**H. M. STAUFFER  
& SON'S, Inc.**  
Witmer - Ronks - Leola

**GRUBB SUPPLY CO.**  
Elizabethtown

**SUNSHINE FARM  
SUPPLY**  
Lititz & Newmanstown

**ROHRER'S MILL**  
R.D. 1, Ronks

**MILLERSVILLE  
SUPPLY CO.**  
Millersville

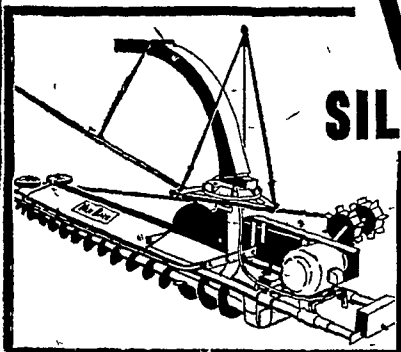
**E. SAUDER & SONS**  
R. D. 1, East Earl

**ROSS C. ULRICH, JR.**  
R. D. 2, Peach Bottom

**HERSHEY BROS.**  
Reinholds

**J. C. WALKER & SON, Inc.**  
Gap

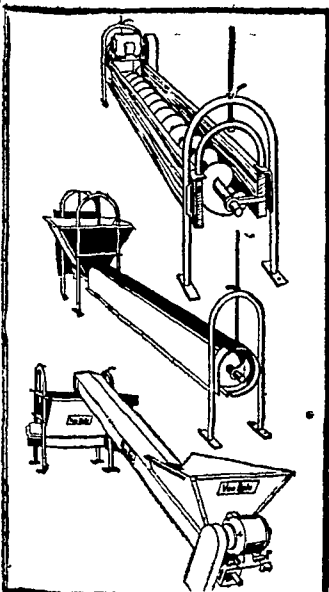
## Complete automatic feeding for DAIRY COWS and CATTLE!



## VanDale SILO UNLOADERS

Double augers deliver more silage per minute even when silage is deeply frozen . . . and at a lower operating cost. Patented V-paddle impellers throw . . . not blow . . . silage down chute. Adjustable drive hubs give positive traction in all types of silage. Three-point suspension keeps unloader level at all times.

## Plus a complete line of bunk feeders to meet your exact needs



### Straight-out Auger Feeder

With VanDale units you can custom build the bunk feeding set-up to fit your needs. Drive section includes hopper, drive assembly and 10', high capacity 9" auger. Additional auger sections are in 10' units and are easily coupled.

### Feed-R-Flo Bunk Feeder

The new, all-metal complete feeder. High capacity 9" auger rotates within tube. Gives all-weather protection, even feed distribution, and lower operating cost.

### Conveyor Trough

An important link in automatic feeding. Positioned below silo chute, the VanDale conveyor trough carries the silage to the bunk feeder. Primary section includes hopper, drive assembly, and 10', 9" auger. Additional 10' auger sections may be added.

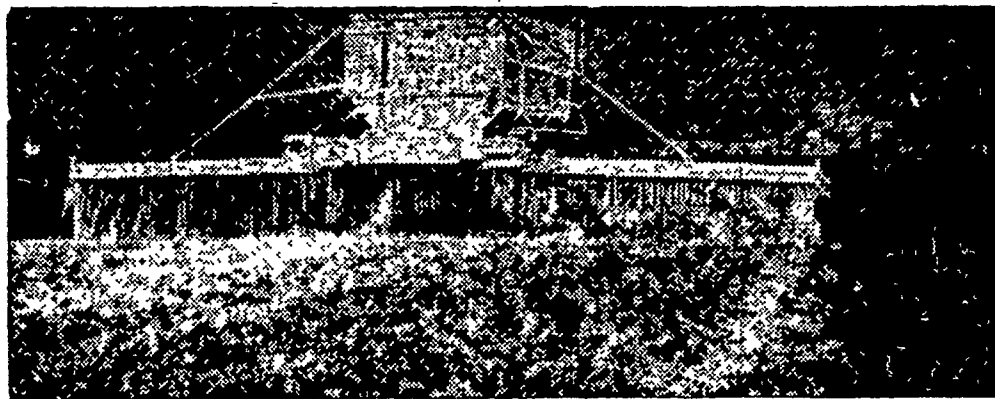
See us for modern automatic feeding equipment

## CALEB M. WENGER

R. D. #1

QUARRYVILLE, PA.

## MARTIN'S LIMESTONE



Order your Limestone now for even spreading by our modern spreaders.  
Quick Service Free Soil Tests Quality Limestone

SPREAD IT NOW ON FROZEN GROUND

## Ivan M. Martin, Inc., Blue Ball, Pa.

Telephones: New Holland ELgin 4-2112 Terre Hill Hillcrest 5-3455  
Gap Hickory 2-4148

## a new, proven LAYER PROGRAM

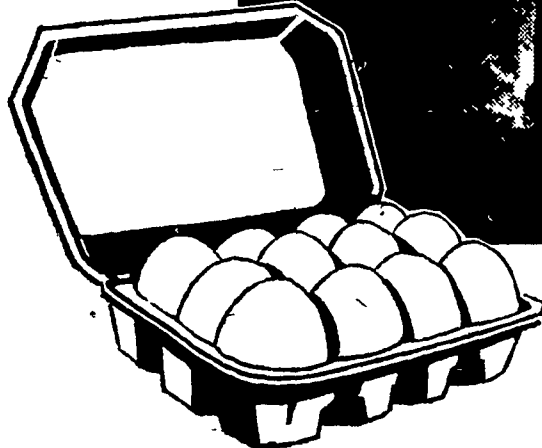
designed for egg  
producers interested  
in greater profits

EGG CYCLE FEEDING  
**M-L-P**  
with  
FARM BUREAU FEEDS

MAXIMUM LAYING PERFORMANCE provides your flock a better opportunity to live and lay. Get the facts on Farm Bureau Egg Cycle Feeding with MLP.

### ASK ABOUT:

1. Large-User Program.
2. Grain Exchange Program.
3. Layer Feeding Agreement.



Start Today . . . Feed The Farm Bureau Way!

For Prompt, Courteous Service, Call . . .

Lancaster  
EX 4-0541

Manheim  
665-2466

New Holland  
ELgin 4-2146

Quarryville  
Sterling 8-2126

