

## Name Chairmen For Ag Center

Nathaniel E. Hager and Dr. E. I. Robertson will serve as Co-Chairmen of the Special Gifts Division in the forthcoming capital campaign for the proposed Agricultural Center Building.

This was made known this week by Leslie S. Hubbard and Levi H. Brubaker, General Co-Chairman of the Drive.

Mr. Hager, a prominent business man is a member of the firm of Hager & Brothers Department Store. Identified as an active leader in Lancaster United Fund Cam-

paigns, he is the recipient of numerous civic citations for community service activities.

Dr. Robertson, a research chemist, is Director of Nutrition, for the John W. Eshelman & Sons Company. A member of St. John's Episcopal Church he currently serves on the Church's Vestry. He is a past president of the Pennsylvania Poultry Federation, and a member of the Lancaster Optimist Club.

The Special Gifts Division, comprising about 100 canvassers, will solicit the smaller industries and businesses, professional people and other selected prospects in the City area. This phase of the

campaign is due to start the early part of February, 1962. In the building of their organization they will be assisted by William E. Krantz and John E. McGrann Krantz, who resides at 621 North School Lane, Lancaster, is controller of Penn Dairies, Inc. Mr. McGrann of 25 Eshelman Road, Lancaster is the proprietor of Farmers Supply Company.

## Farm Show Stalls Are All Filled

Harrisburg—Every livestock stall and pen will be filled for the big '62 Pennsylvania Farm Show January 8 through 12, William L. Henning, State Secretary of Agriculture and chairman of the Farm Show Commission announced today. All commercial exhibit space was allocated by November 20.

Greatest expansion in the livestock show was reported for the dairy department with 779 head entered. However, space limitations reduced the number accepted to 640. The total includes 152 entered by 4-H Club members and 38 by vocational agriculture students.

All species of livestock—horses, sheep, swine, beef & dairy cattle—make a barn capacity total of 1,917 head, according to reports submitted by Farm Show director, John B. McCool. A total of \$39,039 is offered by the Farm Show Commission in all livestock departments. Broken down by departments, horse exhibitors will vie for \$3,750; sheep, \$5,088; swine, \$3,332; beef cattle \$9,653; and dairy cattle, \$17,216.

Applications for more than 225 animals had to be rejected because of lack of space.

Horse entries for the 1962 Farm Show come to 97 head with Belgians accounting for 49, Percherons 30 and grades 18. Sheep total 469 head including 178 wethers (market lambs) and breeding sheep entered by 4-H Club exhibitors. Swine applications totaled 273 head, but breed associations cooperated in reducing this to the pen capacity of 265 head. Vocational agriculture students will exhibit 33 head of swine.

A total of 2,395 birds will be exhibited in the poultry show, with 50 birds exhibited by 4-H Club capon classes and vocational agriculture capon and trio classes.

Rate and efficiency of gain and carcass quality in beef are highly heritable.

Life expectancy at birth in the 17th Century was 18 1/2 years. In the 20th Century it is 58-60 years.

# Forty Minutes . . . . Forty Tons

OR

## Better Value for Every Feed Dollar You Spend!

Yes, 98% of the ingredients received at Miller & Bushong are unloaded at the rate of one ton per minute . . . .

### BULK HANDLING, of course

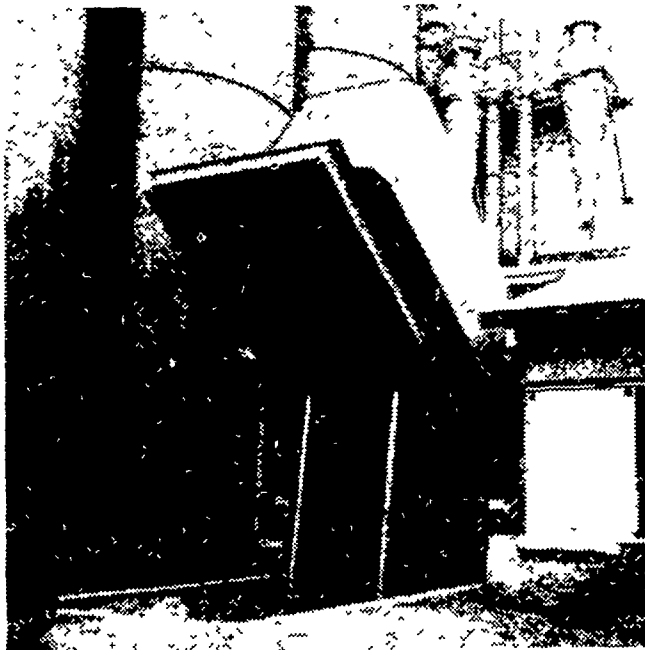
Yes, Bulk in and Bulk out — saves money for producer and supplier alike.

Enables us to get better ingredient values and

Results in lower production costs for you



Bulk hopper car of soybean oil meal transfers its load into storage. Total ingredient capacity is 90 cars.



Grain truck dumps a load of corn. Elevator in background carries grain to the cleaners.



Bulk truck loading finished feed for farm delivery.



Saving time and money (on your farm).

May we help you do a more profitable job and lower your production costs? Contact any Miller & Bushong service representative or call us direct at Lancaster EXpress 2-2145

For a leisurely and complete look at our facilities (the most up to date in this part of the country today) and individual explanations and attention, please make an appointment with any Miller & Bushong Service Representative or call Lancaster EXpress 2-2145 direct.

# MILLER & BUSHONG, Inc.

ROHRERSTOWN, PA.

"Finest Service Anywhere"

Start With The BEST FOR

# EGGS

# MEAT

DAY-OLD and STARTED CHICKS

CAREY and DEMLER Leghorns for high quality White Eggs Carey again won Highest Egg Quality award (85 Haugh Units) competing with best American breeders in official Random Sample Tests.

MERRYKNOLL Black Sex Links and Anderson Golden Sex Links for Big Brown eggs

FOR MEAT Cornish Cobb White Rock Cross and Vantress Cobb Cross Burling personally supervises every step from breeding flock management to hatching and delivery of YOUR chicks NEW Folder

CALL or WRITE "BILL" BURLING OXFORD, PA. • Dial: 932 8 286