

### ● Egg Co-op

(From page 1)

ing plant which has recently ceased operation, according to K. M. Souders, general manager.

William Carlin, Coatesville R4, treasurer of the cooperative presented a proposal from the Pennsylvania Farm Bureau in which the Farm Bureau offered to assume the assets and liabilities of the cooperative in an exchange of stock transaction.

Carlin reported that the board of directors last September requested sealed proposals from both Farm Bureau and Eastern States Farmers Exchange. He said the proposals were requested because the board of directors had changed the dressing operation and continued to lose money.

On November 29 at a board meeting the proposals were opened but the board's action on that occasion was not reported. At a special meeting on December 8, the board voted to accept the Farm Bureau proposal by a vote of six to two with one abstention, Carlin said.

When requested by a member, Carlin read the proposal by Eastern States in which that cooperative offered to invest "a minimum of \$50,000" in the Producers Cooperative Exchange. The cooperative would continue as a separate organization but with a member from Eastern States appointed to the board of directors of Producers Cooperative Exchange.

With \$440,000 in liabilities, a cash outlay of \$60,000 to \$90,000 is needed immediately.

Souders in his report to the management said the biggest mistake made by the cooperative was in not closing the dressing plant when a suitable replacement could not be found for the plant manager who resigned several years ago.

On request of another member, the board was directed, by a vote of members to make a copy of the proposals to be sent to each member before a special meeting is called within the next 20 to 60 days.

At the time of the special meeting, discussion on both proposals will be followed by a vote of the membership on which proposal to accept.

In other business, general manager, Souders reported that total egg volume at the cooperative was down by 16.3 per cent but because more of the eggs were packed in one dozen cartons by the automatic machinery at the plant total sales were down only 2.9 per cent from the previous year.

In answer to a member's question of the legality of purchasing eggs from out of state, David Putney, the co-op's legal council said, "Internal Revenue rulings permit cooperatives to purchase commodities on the open market to meet commitments".

Members returned the following directors to the board of directors for three year terms: Mark Hess, Hershey R1; Joseph K. Kreider, of Lebanon R1, and H Raymond Stoner, 1051 Eden Rd., Lancaster.

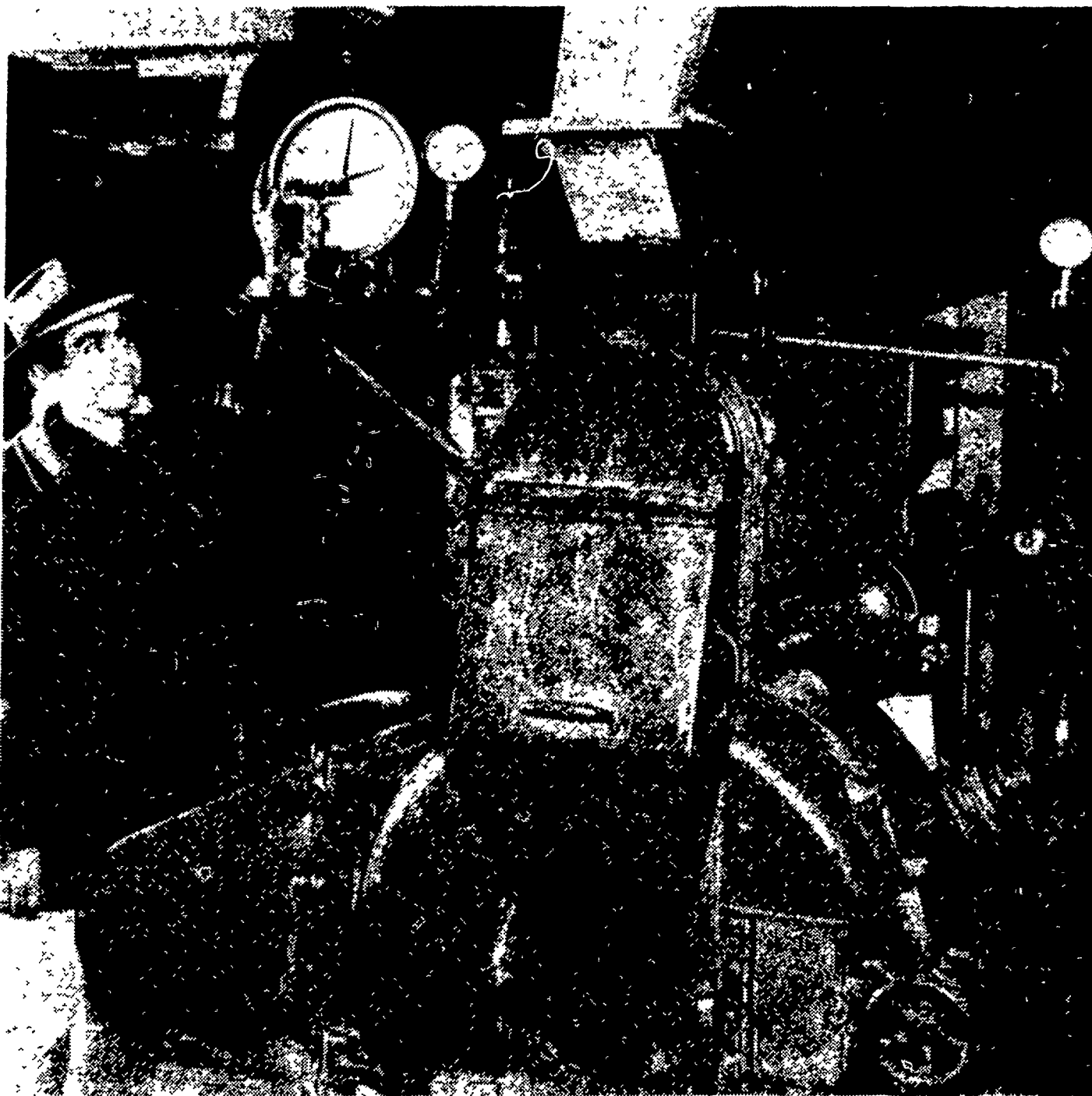
What used to be called Darkest Africa is not so dark today, thanks to modern educational method. In Algeria, French North Africa, for instance, there are four technical colleges, two industrial schools, one resident school for apprentices, one school of fine arts, and one commercial school. They have a total of 6,000 students.

U. S. Housewives open 55 million cans and jars of food a day.

### Attention Dairymen:

## **ANOTHER "Farm Bureau" FIRST!!**

**We're The "First" Feed Mill In Lancaster County To Install The New Sprout-Waldron "Molasses Blending Device" On Our Pellet Mill At New Holland!**



Reuben Hess, Branch Manager at our Modern New Holland Feed Manufacturing Plant, is justifiably proud of the Brand New "Molasses Blending Device" recently installed on our Pellet Mill.

### What Does This Mean To You?

**NOW... Farm Bureau DARI-PAK PELLETS (14% & 16%)  
Have FULL 10% (200 lbs.) Molasses Per Ton!**

This New Sprout-Waldron "Molasses Blending Device" thoroughly blends Molasses through the entire pellet - - not just sprayed on the outside. They smell and taste so good - - your cows will really go for them. Added palatability is an important advantage with 10% Molasses - - - even more important, the extra Molasses will encourage increased water consumption - - - this means more milk per cow.

GET THE EXCITING DETAILS of Farm Bureau's DAIRY FEEDING PROGRAM. Today! Find out why so many of your neighbors are switching to Farm Bureau Feed.

**START TODAY... FEED THE FARM BUREAU WAY!**

For Prompt, Courteous Service.

Always, Call . . . .

Lancaster

EX 4 0541

Manheim

665-2466

New Holland

ELgin 4-2146

Quarryville

Sterling 6-2126

