

Ag Center

(From page 1)

clude:

Northeast Area: A. L. Gerhart, William B. Stober, Samuel Heisey, J. Glenn Wissler, Allen K. Risser, Raymond H. Weaver, Eugene G. Hoover, and Frank H. Bucher. C. Warren Leininger and Willis Z. Esbshade are Co-Chairmen of the Area

Northwest Area: Victor B. Longenecker, Willis Hackman, Clarence S. Greider, Henry N. Miller, Eugene Casse, Clarence Keener, Harold B. Endslo, Mervin Arnold, Wilbur Heistand, J. Richard Nissly, Leroy Hottenstein, J. Clyde Root, Robert Hess, Homer Z. Ginder, Mark

Graybill and Henry Bomberger. Chairmen of the Area are: Noah W. Kreider and Phares S. Risser.

Southwest Area: B. Eugene Musser, Martin S. Greider, Herbert Wiggins, Noah M. Brubaker, Lloyd Harnish, Wilbur Heller and Glenn H. Shenk Amos H. Funk, Jay Garber and Robert Bushong are Co-Chairmen of the Area

Southeast Area: George M. Weaver, John B. Lapp, Elvin Hess Jr., Mervin W. Landis, Melvin R. Stoltzfus, Melvin J. Martin, Robert C. Groff, John H. Herr and B. Snavely Garber are Co-Chairmen of the area.

Southern Area: George

Knight, Victor Denlinger, John Weicksel, J. Everett Kreider, Howard Wagner, Samuel Groff and Madison McElwain. Richard P. Maule and Lewis Shoemaker are Co-Chairmen of the area.

The Campaign Co-Chairmen stated that a corps of at least 600 adult volunteer canvassers will be recruited by District Chairmen, to assure soliciting most of the farm families and farm-related businesses of the County in the drive.

Upon completion, the Center would be the first building of its kind in both the State and County.

Patronize Lancaster Farming Advertisers.

Deer Diets To Be Studied

Nutritional requirements of female deer will be studied among a herd of 24 white tails newly acquired by the Pennsylvania State University. Feed needed by bucks to grow large antlers has been studied for several years by the Agricultural Experiment Station.

Animal nutritionists Robert L. Cowan and Theodore A. Long will study the effects of various feeds and feed restrictions on does (females) carrying fawns, especially the ability of does to bear and nurse twins.

The Penn State researchers also want to learn whether does have a period of voluntary feed restriction similar to that of mature male deer. Bucks voluntarily reduce feed intake from November to March, it has been observed.

Earlier studies show that mature bucks do not need to be quite as well fed as yearlings to grow good antlers. With young bucks, nutrients are used primarily for body growth.

Poor Threads May Cause Poor Tractor Firing

Did you know that corrosion on the spark plug holes of your tractor engine can cause new plugs to fail shortly after they are installed?

Agriculture engineers point out that when new plugs are installed into holes with corroded threads, the torque may not be enough to compress the spark plug gasket. The resulting poor metal-to-metal contact will cause overheating of the plug and premature spark plug failure.

You can prevent this by cleaning the hole threads with a spark plug tap—or by using a small wire brush. If you use a tap, be careful not to cross the threads.

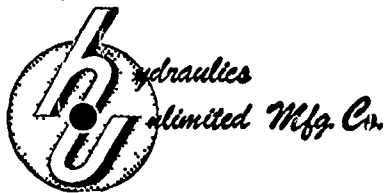
After the threads are cleaned, and before installing the new plugs, be sure to crank the engine a few times to blow out the debris.

HARSH HYDRAULIC HOISTS



The 32 available models come to you with a wide range of lifting capacities ranging from 3½ to 20 tons for your truck, pickup, or trailer. The smooth, trouble-free action of a HARSH HOIST has a fast lifting time of from 12 to 160 seconds, which allows more time for actual hauling.

These hoists come to you at an average cost of only 16¢ a day as compared to the \$10-\$15 a day you now spend to manually unload your truck.



To design and build a light-weight, low-costing truck hoist suitable for all types of farm use, priced within the average farmer's budget was the aim of "Bud" Harsh when HYDRAULICS UNLIMITED MFG. CO. began operations. This hoist was built and is now in use throughout the nation.

The HARSH HYDRAULIC HOIST averages only \$328.52 (including Federal excise tax) and maintains a low taxable weight which averages 273 lbs. These economical hoists are built for either back or side dumping, depending upon your need.

Save costly time and eliminate back-breaking labor by unloading with a HARSH HYDRAULIC HOIST engineered for economical, speedy, and durable farm use.

MANN & GRUMELLI FARM SERVICE

R. D. 2, QUARRYVILLE

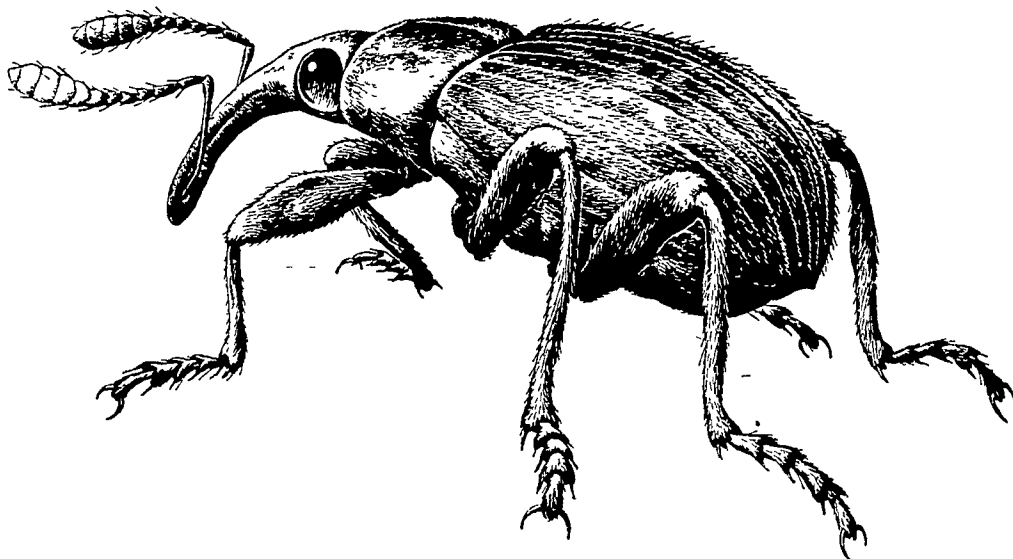
PHONE ST 6-3630

For Your Wife's Sake!

(IF NOT YOUR OWN)

Use Lan-Pro NOREEK

WANTED—DEAD!



ALFALFA WEEVIL and Spittle Bug, too!



DIELDRIN

DISTRIBUTED BY

J. C. EHRlich CHEMICAL CO., Inc.
LANCASTER

PFISTER ASSOCIATED GROWERS
R. D. 3, LANCASTER

P. L. ROHRER & BRO., Inc.
SMOKETOWN

T. M.'s Reg. U. S. Pat. Off.: ORTHO

CASHMAN Hi-Cash PRODUCTION PULLETS

IT'S OFFICIAL NOW!

Cashman Hi Cash Production Pullets have won the 3 year summary award for the highest income over feed and chick costs for the past three Random Sample Tests at Missouri.

For More Information Contact

Weaver's Hatchery

R. D. 4, LITITZ
RE 3-0885



DOES MORE JOBS
NEW McCULLOCH ONE/42 CHAIN SAW
takes six versatile accessories

NEW LOW PRICES

TERMS & TRADE-INS!

A.B.C. GROFF

NEW HOLLAND
Ph. EL 4-8001