

One goal of swine researchers is to synchronize heat periods among sows. This will make artificial insemination practical and bring farrowing dates within shorter periods.

The 1961 Random Sample

Results Are Coming In:

The Shaver Starcross 288

WINS

The Western N. Y. Test

SECOND

In the Wisconsin Test

THIRD

In the Missouri Test
In the Texas Test

SHAVER
Greider
Leghorn
Farms, Inc.

MOUNT JOY R. 1, PA.
Phone: OL 3-2455



FUTURE FARMERS AT THE GARDEN SPOT HIGH SCHOOL will learn tractor engine maintenance first hand this winter on the engine presented to them recently by the International Harvester Sales in Ephrata. Making the presentation is E. W. Rutt, right, representing the Ephrata firm. Accepting the 21 horsepower unit for the school is Donald A. Sheaffer, Garden Spot High School Principal, center, while Larry Weaver, left, president of the Grasslands Chapter of Future Farmers of America accepts the gift on behalf of the agriculture department. The unit is the second such piece of equipment placed in a county vocational agriculture department by the Ephrata International Harvester sales. The first unit was placed in the Ephrata High School early in the summer. Robert Herr, teacher of vocational agriculture at New Holland said the unit would be used in farm mechanics instruction with high school students as well as Young Farmer classes.

Advertisers will be glad to have you mention Lancaster Farming when answering advertisements

Swine raisers should maintain a cholera vaccination program that includes all animals in the herd.

Bedding of chopped straw and ground corncobs stays dry longer than straw alone in livestock pens.

Wheat Grazing Legal Until May 1, 1962

With few exceptions, acreage diverted from wheat production to conservation use under the 1962 wheat stabilization program may be grazed until May 1, 1962, according to Landis G. Becker, Chairman of the Lancaster County Agricultural Stabilization and Conservation Committee.

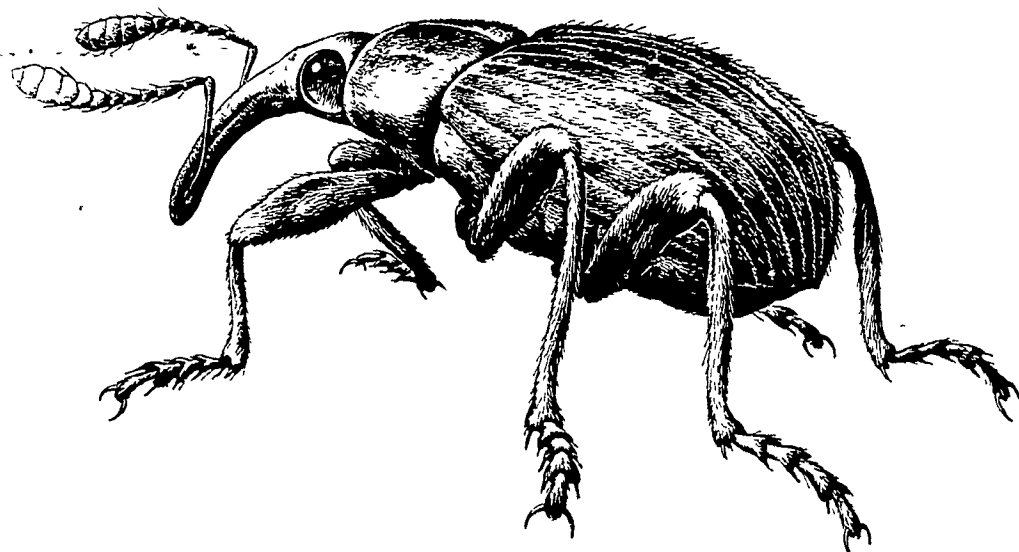
An exception to this deadline date for grazing is where a producer wishes to benefit under the program's double-cropping provisions, in which case grazing will not be permitted on the farm after December 31 '61.

The 1962 wheat stabilization program provides for the diversion of land from wheat production to conservation uses. By using the acreage diverted for approved conservation practices, producers earn payments. The program also provides that the diverted acreage is not to be grazed or a crop harvested from it during the year.

With a grazing deadline of May 1, 1962, the diverted acreage on participating farms may not be grazed from that date through the balance of the calendar year if the farm is to remain eligible for wheat stabilization payments. In addition, the no-grazing requirement must be met if the wheat from the farm is to be eligible for price support.

Winter wheat producers may apply for participation in the 1962 wheat stabilization program any time up to December 1, 1961. An application is necessary for each farm on which the producer expects to take part in the program. Winter wheat stabilization payments will be made only to those who file application at the County ASCS office by December 1.

WANTED-DEAD!



ALFALFA WEEVIL and Spittle Bug, too!

Your Custom Sprayer is using **ORTHO** Dieldrin

Richard R. Forry
LANCASTER EX 7-0035

Melvin G. Lapp
ATGLEN LY 3-5717

Herbert F. Gehr
STEVENS AN 7-6822

LeRoy R. Pfautz
STEVENS AN 7-6015

Kenneth H. Habecker
LANCASTER EX 3-4187

Alvin F. Smoker
INTERCOURSE SO 8-8416

Hess Bros.
MOUNT JOY OL 3-7195

Harold Zook
LANCASTER EX 4-5412

Benj. B. Landis
PARADISE OV 7-6535

T. M.'s Reg. U. S. Pat. Off.: ORTHO

USE DIELDRIN THIS FALL--

CONTROL-
ALFALFA WEEVIL
NEXT SPRING

Alfalfa and clover fields sprayed with Dieldrin during October and November gives satisfactory control of alfalfa weevil and spittle bug the following spring.

Order your supply now from

P. L. ROHRER & BRO., INC.

SMOKETOWN

Ph. Lanc. EX 7-3539

U.S. REG. U.S. PAT. OFF. ORTHO 100700
ORTHO
SCIENTIFIC PEST CONTROL

Dieldrin

Distributed by

J. C. Ehrlich
Chemical Co., Inc.

736 E. CHESTNUT ST.,
LANCASTER, PA.

EX 7-3721