



PREPARING TO TAKE MOISTURE SAMPLES from the corn grown in the Lancaster County Extension Service variety plots are, left to right, Dr James Eakin, and Dr Dale Baker, agronomists from the Pennsylvania State University, and Glenn Brubaker, farmer on the Lime Springs Farm where the plots were located. After the plots were harvested Tuesday, Drs Eakin and Baker discussed corn growing practices with farmers and seedmen of the county. —L.F. Photo

● Corn Plots

(From page 6)

corn crop can be applied in is one way to get around the the row so-called Phosphorus fixation. Furthermore, he said, much Most of the Nitrogen and Phosphorus becomes Potash fertilizers must be unavailable to the plant when plowed down or broadcast, he said Salts in the Nitrogen

and Potash fertilizers can damage small plants or prevent seed germination if they come in contact with the seed. For this reason, Baker recommended planting only with a planter that will put the fertilizer in a band 2 inches below and 2 inches to the side of the seed. With many of the old split boot planters, seed and fertilizer goes into the same channel, he said. About 50 pound of actual nitrogen and Potash can be banded without danger, he said.

In discussing the 30 hybrid varieties in the plots, Eakin cited a survey of 144 farmers in Center County which showed that they planted 144 different hybrid corn varieties. "This is what I call corn confusion", he said.

A few of the varieties in the plots this year were in the original plots, but by and large, the hybrids in use now are newer varieties. We still use U S 13 as a yardstick.

Test plots at two sites in the county yielded an average of 132.9 bushels of shelled corn (corrected to 15 per cent moisture) per acre.

At the Lime Spring Farm, tenanted by Glenn Brubaker, the plots averaged 144.9 bushels per acre while those on the farm of Glenn Wissler, Ephrata R1 near Clay, made 120.9 bushels.

Arnold Lueck, assistant County Agent said the lower yield on the Wissler farm could be attributed to several

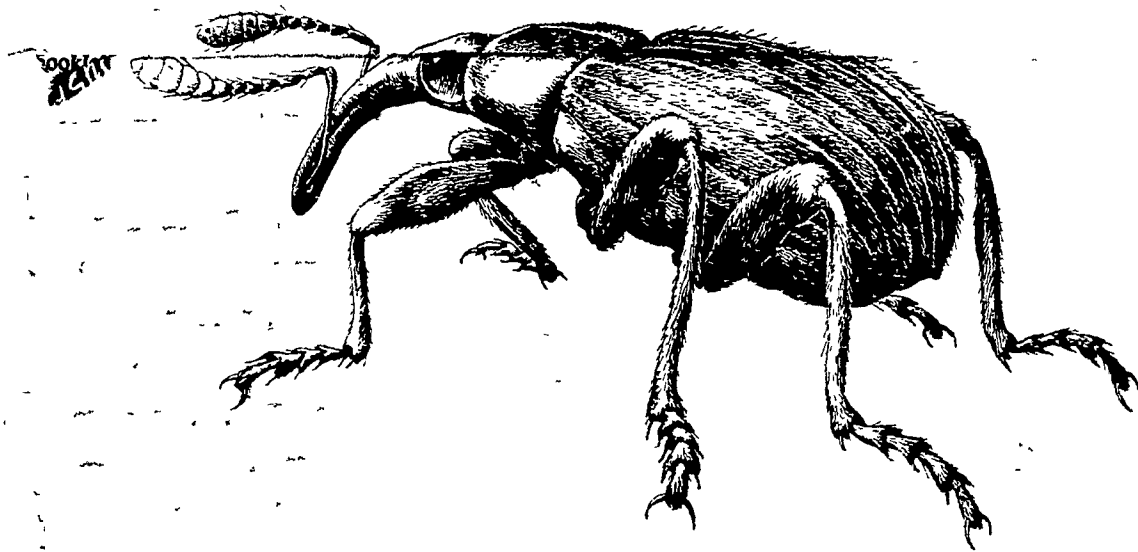
factors. Weed control with Atrazine and one cultivation on the Brubaker plots was excellent while the unsprayed plots at Wissler's were cultivated several times during the wet growing season with only moderately good control. More compact soil and a poorer stand on the Wissler farm are also part of the story, Lueck said, even though both plots were planted to produce 20,000 stalks per acre.

Eakin said that while the yields were good, they generally won't be near records. The county plots last year averaged 146.41 on two sites. In plots harvested Tuesday and Wednesday of this week the corn moisture content was extremely low, in some cases down to 19.9 percent, Lueck said.

Following are the yields on the two plots corrected to 15.5 per cent moisture.

Variety	Brubaker Farm	Wissler Farm
DeKalb 633	148.7	108.2
DeKalb 640	145.8	132.0
DeKalb 803	137.1	118.5
DeKalb 812	141.3	118.5
East States 800	158.0	123.9
East States 830	145.2	118.5
North East 912	162.4	138.7
New Jersey 8	138.3	123.5
Funk G-83	130.5	110.8
Funk G-91	147.7	124.9
Funk G-96	148.2	132.2
Funk G-144	149.2	114.5
Muncy H760	135.0	119.1
Muncy H522	127.7	100.9
Pa 807	146.3	123.5
Pa 820	145.2	118.1
Pa 825	143.1	110.7
Bureau 832	138.1	121.9
Pa 840	148.9	116.8
Pfister 418	139.2	124.6
Pfister 434	155.2	126.7
Pioneer 301A	150.3	123.0
Pioneer 312A	147.2	142.5
Pioneer 323	152.2	132.8
Pioneer 325A	149.1	127.0
Pioneer 345A	139.8	118.9
Super Cross 890	136.5	118.0
Todd 635	137.5	102.0
Todd 855	164.2	125.4
U. S. 13	141.2	112.2

WANTED—DEAD!



ALFALFA WEEVIL and Spittle Bug, too!

ORTHO DIELDRIN

DISTRIBUTED BY

J. C. EHRLICH CHEMICAL CO., Inc.
LANCASTER

PFISTER ASSOCIATED GROWERS
R. D. 3, LANCASTER

P. L. ROHRER & BRO., Inc.
SMOKETOWN

T. M.'s Reg. U. S. Pat. Off.: ORTHO

CASHMAN Hi-Cash
PRODUCTION PULLETS

IT'S OFFICIAL NOW!

Cashman Hi Cash Production Pullets have won the 3 year summary award for the highest income over feed and chick costs for the past three Random Sample Tests at Missouri.

For More Information Contact

Weaver's Hatchery
R. D. 4, LITITZ
RE 3-0885

CERTIFIED HEAT

- RED COAT
- PENNOLL
- DUAL
- SENECA

CERTIFIED ARLEY

- HUDSON
- WONG

REIST ED COMPANY

MT. JOY

Ph. OL 3-3821