

## Clayton Erb Is Given Award

Clayton B. Erb, Landisville, has been named recipient of the first Hoffman Seed Man award.

In presenting the award, the company said, "This first award must go to Clayton B. Erb for giving the most years of service to his legion of farm-friends and to the company—he is truly the 'number one man'."

Erb formed his association

with the Hoffman seed firm job 65 is just another birthday. In the early 1900's when he became one of the first producers of seed wheat for the originator of the seed house.

The Hoffman firm was formed in 1899, and since the Erb farm was nearby, the association was a natural one.

Erb began work for Hoffman in the 1920's and has been associated with the company for the 40 years since.

Today at 80 years of age, Erb is still active in the sales organization of the seed firm and has a regular territory which he covers as he has always done. He says in his

## Feeder Calf

(From page 1)

The feeder calf sale committee, in order to stimulate interest in the purchase of high quality calves for show purposes, is offering prize money for any calf purchased at this sale and placing in the first 15 places at the Garden Spot Baby Beef Show at the stockyards next August Awards of \$25 will be given for calves in the first five placings and awards of



CLAYTON B. ERB, left, accepts the first outstanding seedsman award from William F. Hoffman, president of A. H. Hoffman, Inc. seed firm of Landisville. Erb has been with the company since the early 1920's. Before that time he produced seed wheat on his farm for the company. Erb was the first employee to be so honored by the company.

\$10 will be given for sixth to 15th place. A good number of fancy calves will be sold separately to encourage purchases by youths for club purposes.

At the 1960 sale over 400 head of calves changed hands at an average price of 27.66 for steers and heifers. One fancy calf crossed the block at \$45 per CWT to top the sale.

Over 400 head of purebred heifers and steers have been consigned again this year. Abram Diffenbach will be auctioneer.

## Honey Club

(From page 1)

ing placings in the contest: 3, Lloyd Hahn, Columbia R1; 4, Claude Hahn, Columbia R1; 5, Roger Stoner, 1051 Eden Road, Lancaster, 6 Paul Schantz, Jr., Ephrata R1, 7, Clair E Greiner, Columbia R1; 8, Kenneth Herr, Kirkwood R1, 9, Harry Heller, 715 Willow Road, Lancaster, and 10, John Erb, of 118 Kreider Ave., Lancaster.

Clarke also spoke on winter care of bees at a meeting of the Lancaster County Honey Producers after the club roundup.

Association members made plans for individual and county honey exhibits at the Pennsylvania State Farm Show in January.

Advertisers will be glad to have you mention Lancaster Farming when answering advertisements.

## New Ful-O-Pep Pig Starter is GUARANTEED PALATABLE

or your money back

The sooner little pigs eat and the more they eat the more they gain. With Ful-O-Pep Pig Starter, you can expect a pound of gain on only 1.4 to 1.6 lbs. of feed. That's why palatability is so important—pigs eat more and make greater gains at a time when those gains cost you less.

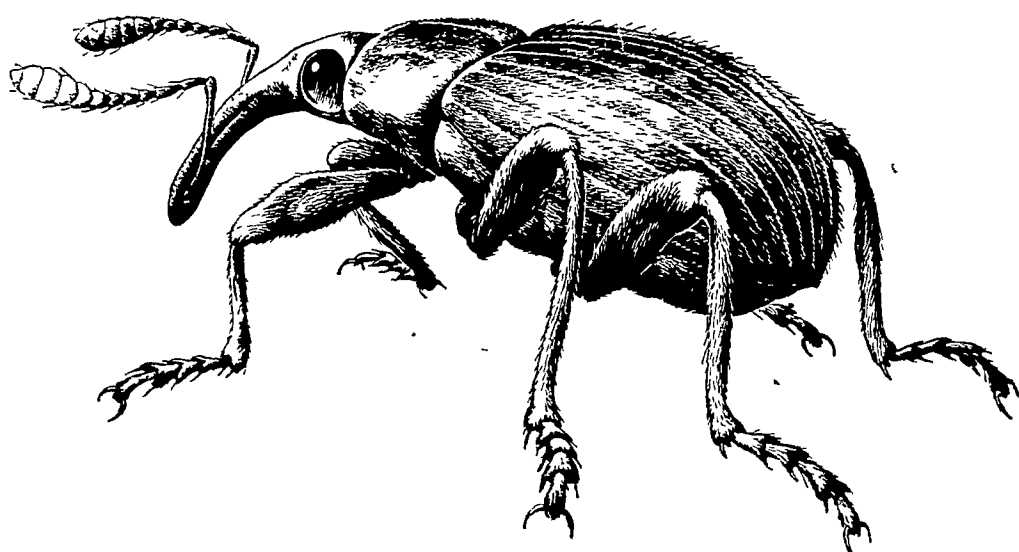
Try a bag of new Ful-O-Pep Pig Starter today and see if it isn't the most palatable Pig Starter you can buy. If your pigs don't prefer it, return the unused portion and we'll give you your money back.

### KIRKWOOD FEED & GRAIN

KIRKWOOD, PENNA.

Ph. LAmbert 9-2132

# WANTED—DEAD!



## ALFALFA WEEVIL and Spittle Bug, too!

Your Custom Sprayer is using **ORTHO** Dieldrin

Richard R. Forry  
LANCASTER EX 7-0035

Melvin G. Lapp  
ATGLEN LY 3-5717

Herbert F. Gehr  
STEVENS AN 7-6822

LeRoy R. Pfautz  
STEVENS AN 7-6015

Kenneth H. Habecker  
LANCASTER EX 3-4187

Alvin F. Smoker  
INTERCOURSE SO 8-8416

Hess Bros.  
MOUNT JOY OL 3-7195

Harold Zook  
LANCASTER EX 4-5412

Benj. B. Landis  
PARADISE OV 7-6535

T. M.'s Reg. U. S. Pat. Off.: ORTHO

U.S. PAT. OFF. ORTHO 150789  
**ORTHO**  
SCIENTIFIC PEST CONTROL

## Dieldrin

Distributed by

J. C. Ehrlich  
Chemical Co., Inc.

736 E. CHESTNUT ST.,  
LANCASTER, PA.

EX 7-3721

USE DIELDRIN  
THIS FALL--

CONTROL--  
ALFALFA WEEVIL  
NEXT SPRING

Alfalfa and clover fields sprayed with Dieldrin during October and November gives satisfactory control of alfalfa weevil and spittle bug the following spring.

Order your supply now from

**P. L. ROHRER & BRO., INC.**

SMOKETOWN

Ph. Lanc. EX 7-3539