

## Best Food Buys Fall Color Adds Appetite Appeal

Have you been admiring the colorful scenery of our Pennsylvania Countryside and wishing you could bring some of those colors indoors for use in home decorations? Wait no longer, says Tom Piper, our Penn State Extension Marketing Agent, because local markets have ample supplies of Indian corn, red and yellow apples, pumpkins, squash and decorative gourds.

Squash and pumpkins can add color and zest to autumn meals too. The acorn and butternut squash are in plentiful supply and will add pleasing variety to the menu. Pick a pumpkin too, a small one for pies or a large one for a jack-o-lantern.

Plentiful apples—the Jonathan, Red and Golden Delicious, Winesap and Grimes Golden varieties, top the list of good fruit buys. Prices are about as low as expected for the season because storage costs are not a factor at this early point. Mellow apples are best held at cool room temperature until ready to eat. Sweet cider is an item in plentiful supply too.

Lower prices are in prospect for citrus as supplies increase from Florida. Best buys from the standpoint of consumer satisfaction would include the red-fleshed grapefruit, Navel oranges and the Hamlin and Parson Brown juice varieties. Banana prices are up over last week. Early shipments of Emperor grapes are beginning to replace the dwindling Tokay variety. There are several other varieties of table grapes available at seasonal low prices.

Good vegetable buys include cabbage, carrots, eastern celery, repacked tomatoes, cucumbers, lettuce and leafy greens. Cauliflower, retarded by heat and hurricane damage in early season, has shown marked improvement

and prices are reasonable. Potatoes continue as a very good buy with wholesale prices the lowest in many years. A big meeting in Harrisburg last week of over 100 grower representatives from all eastern states recommended to government officials that surplus purchases be made for distribution to the needy and for the school-lunch program, and that quotas for limiting production should be studied before next year.

Wholesale pork prices have been moving steadily lower for the past three weeks. This should provide some lower retail prices in weeks ahead. Look for chuck roasts of beef, fresh pork picnics and pork loins to ap-

pear as promotional items this week. Turkeys and stewing hens are in seasonally heavy supply and continue as economical meat choices. Small and medium sized eggs continue to rate a good protein value.

### ● Personnel

(From page 7)  
was 4th place winner in the State Plowing - 1956 - 5th place winner and 1957 moved into second place.

Herr graduated from the Hershey high school and attended North Carolina State College, Raleigh, N. Carolina. He will represent the firm in Lebanon, Berks and Lancaster County areas.

### ● Corn Plots

(From page 1)  
height of stalk and resistance to stalk and root rot. James Eakin, agronomist from the Pennsylvania State

University, will be at both plots to explain the merits of the hybrids as he has seen them perform in various demonstrations around the state this fall. He will also answer questions on corn growing.

The first demonstration will begin at 8:30 a.m. on Tuesday, October 28 on the farm of Glenn Brubaker, Lime Spring Farm, Running Pump Road, between the Marietta and Columbia Pikes.

At the same hour on the following day, the second of the two plots will be husked on the farm of Glenn Wissler, northeast of Clay on the road to Gerlach's store.

"Bring your husking pegs and give us a hand in harvesting the plots," Lueck invited.

### ● Rice

(From page 9)

The bloom period will last about 10 days or so, then the red leaves—which many people think is the flower—will fall off and the plant will again become dormant.

A poinsettia also drops its leaves if its roots are congested. If the leaves of your plant are already falling, it probably needs to be replanted in a larger pot.

## PENN SQUARE MUTUAL FUND

Investing in Diversified Securities  
for INCOME and CAPITAL GAINS Possibilities

**NO BUYING CHARGE  
NO SELLING CHARGE**

Subscriptions Accepted With No Minimum Share Requirements  
Free of Pa Personal Property Tax in opinion of Legal Counsel  
**NON-ASSESSABLE**

**J. L. HAIN & CO.**

451 Penn Square, Reading, Pa. FR 5-4424

Please send me free information about Penn Square Mutual Fund


Name .....

Address .....

City and State .....

LISTEN TO WCOY-COLUMBIA 1580 ON THE DIAL  
12:05 to 12:10 Daily For accurate up to minute data  
on stock prices.

**Spray Now  
WITH  
DIELDRIN**  
Hess Bros.  
FLORIN, PA.  
Ph. Mt. Joy OL 3-7195

**The 1961  
Random Sample**  
Results Are Coming In:  
**The Shaver  
Starcross 288  
WINS**  
The Western N. Y.  
Test  
**SECOND**  
In the Wisconsin Test  
**THIRD**  
In the Missouri Test  
In the Texas Test  
**SHAVER**  
Greider   
Leghorn   
Farms, Inc.  
MOUNT JOY R. 1, PA.  
Phone: OL 3-2455



## INCREASING FARM PROFITS!

Proper crop rotation, good farm machinery, and every other method for making farming more profitable has the hearty approval of our management. Whenever we can loan you money for some such purpose as this, come in and give us an opportunity to do so.

Use Our Convenient DRIVE-IN WINDOW One-half block from Penn Square on South Queen Street — Rear of Main Bank.	<b>FREE PARKING</b> 25 S. Queen Street— Swan Parking Lot — Vine & S. Queen Sts. Stoner Parking Lot — S. W. Corner Vine & Queen Sts.
--	---



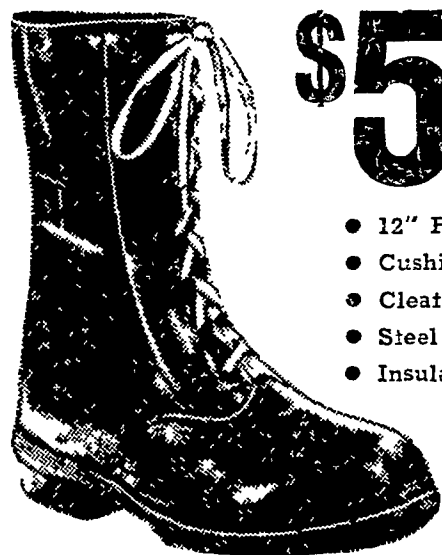
## Conestoga NATIONAL BANK

"Serving Lancaster from Center Square since 1889"

MILLERSVILLE BRANCH 302 N. GEORGE ST.  
Member Federal Deposit Insurance Corporation  
Maximum Insurance \$10,000 per depositor

## Hunting Boots

All Guaranteed 1st Quality!  
Largest Selection Anywhere  
At Super Low Prices!



**\$5.77**

- 12" Full Lace
- Cushion Insoles
- Cleated Soles
- Steel Arches
- Insulated

## SUPER SHOES

220 WEST KING STREET LANCASTER  
OPEN EVERY NITE 'TILL 9 P. M.  
INCLUDING SATURDAY NIGHT  
FREE PARKING

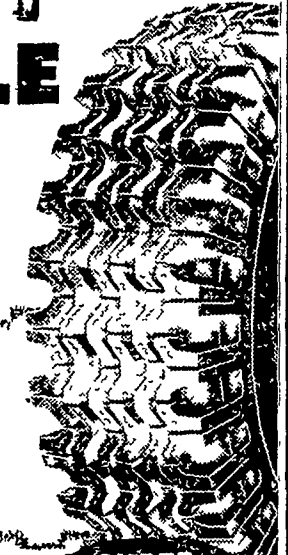
MIX OR MATCH

## TIRE SALE

(October Only)

SAVE over 10%  
on all UNICO tires

MIX or MATCH  
2 or more tires  
get an  
EXTRA 5% savings



**UNICO Redi-Grip**  
7:50 x 14 — 4 ply  
Black, Tubeless, Nylon

**SUPER  
SPECIAL  
\$16.95**  
PLUS TAXES

- Top Quality Tires for Auto, Truck and Tractor.
- Road Hazard Warranty
- Lifetime Guarantee

Lancaster EX 4-0541  
New Holland EL 4-2146

LANC. COUNTY  
**SERVICES  
FARM & HOME  
SUPPLIES**  
FARM BUREAU

Manheim MO 5-2466  
Quarryville ST 6-2126