

● **Mico-Fume** to 100 square yards of bed; (From page 9) 3, water with 150 gallons of dry, one 20 pound bag of the dry chemical Mylone (D-25) nothing more until seeding time, then hand rake but do



**DEKALB  
640**

BLIGHT TOLERANT  
★  
OUTSTANDING PERFORMER AT HEAVIER PLANTING RATES  
★  
ONE OF THE BEST STANDING HYBRIDS EVER DEVELOPED  
★

PLANTED BY MORE FARMERS THAN ANY OTHER BRAND

**P. L. ROHRER & BRO., Inc.**  
SMOKETOWN LANC. EX 7-3539



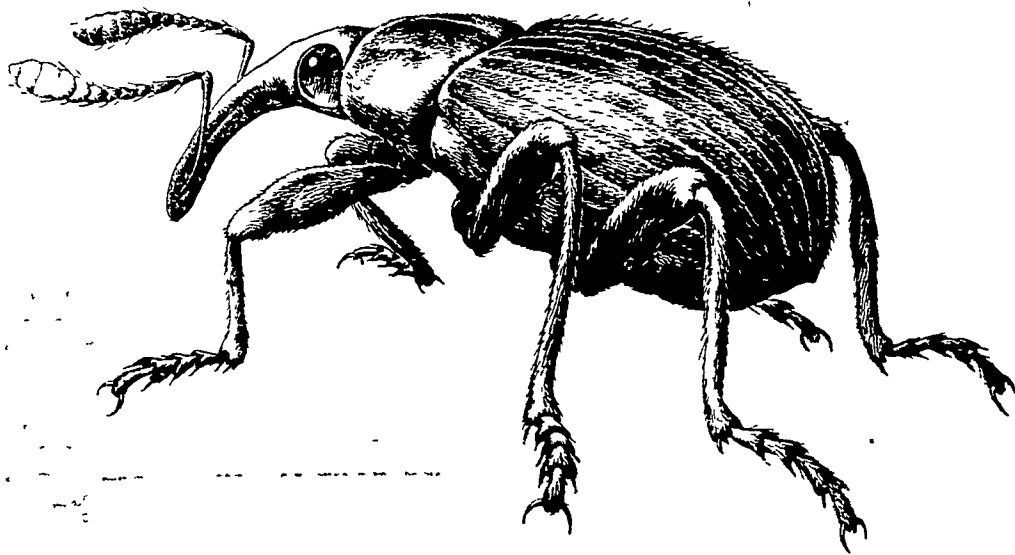
FUMIGATING A TOBACCO BED is not the hard work it used to be. Forney Longenecker, left, tobacco farmer of Lititz R3 watches as Jere Rohrer, chemical company representative, applies a dry chemical to a tobacco bed on the Longenecker farm. Ross E Holtz, chemical company representative, sprays the bed with water to activate the chemical and seal the surface of the soil. The company claims the chemical will kill weed seeds, grass seeds, fungi, nematodes and some soil insects. —L.F. Photo

not turn the soil" can be made at any time soil temperature is between 50 and 65 degrees, but the manufacturer suggests doing the job during September, October or November in order to be ready for planting in the spring. The treatment Mico-Fume is one of four

treatments recommended by the agronomists at State College, Rohrer said, but we feel that the convenience and ease of application make it the best material available for tobacco bed fumigation. At any rate, farmers in the tobacco growing business will be watching with great interest the beds on the Longenecker farm. Plots in other sections of the county are located on the farms of Samuel E Fisher, Gordonville R D, Christian Peterseim, Bird-in-Hand, Jay Leffer, Quarryville R3, as well as the beds at Glick's Plant farm in Smoketown.

Lancaster Farming advertising brings results.

# WANTED—DEAD!



## ALFALFA WEEVIL and Spittle Bug, too!

Your Custom Sprayer is using **ORTHO** Dieldrin

Richard R. Forry  
LANCASTER EX 7-0035

Melvin G. Lapp  
ATGLEN LY 3-5717

Herbert F. Gehr  
STEVENS AN 7-6822

LeRoy R. Pfautz  
STEVENS AN 7-6015

Kenneth H. Habecker  
LANCASTER EX 3-4187

Alvin F. Smoker  
INTERCOURSE SO 8-8418

Hess Bros.  
MOUNT JOY OL 3-7195

Harold Zook  
LANCASTER EX 4-5412

Benj. B. Landis  
PARADISE OV 7-6535

T. M.'s Reg. U. S. Pat. Off.: ORTHO

**USE DIELDRIN  
THIS FALL--  
CONTROL--  
ALFALFA WEEVIL  
NEXT SPRING**

Alfalfa and clover fields sprayed with Dieldrin during October and November gives satisfactory control of alfalfa weevil and spittle bug the following spring.

Order your supply now from

**P. L. ROHRER  
& BRO., INC.**

SMOKETOWN  
Ph. Lanc. EX 7-3539

U.S. REG. U.S. PAT. OFF. ORTHO 150708  
**ORTHO**  
SCIENTIFIC PEST CONTROL

# Dieldrin

Distributed by

**J. C. Ehrlich  
Chemical Co., Inc.**

736 E. CHESTNUT ST.,  
LANCASTER, PA.

EX 7-3721