

4-H Beef Club Sets Deadline

Farm boys and girls 10 to 19 years of age who are interested in feeding a 4-H baby Beef should enroll in the project by October 15th at the County Agent M. M. Smith

said this week.

Members of the Red Rose Club will have a chance to re-enroll in the project at the October 11th meeting of the club at the West Lampeter Elementary School; new members may join the club by contacting any present member of the club or by leaving their name and ad-

dress with any of the following Club leaders: Fred W. Linton, Quarryville R2; Elvin Hess Jr., Strasburg R1; Myling R. Good, Manheim R1; Jay R. Nissley, Manheim R4; Victor Longenecker, Elizabethtown R3, or Harry S. Showalter, Ephrata

Interested boys and girls in the New Holland area should contact one of the following Club leaders in that club: John B. Lapp, Bareville R1; Lester M. Weaver, New Holland R1; Harvey High, Bareville, and Chester B. Nolt, Bareville, Smith said.

Poultry Princess

(From page 1)

A graduate of Manheim Central High School, Miss Boyd, who is employed in a Manheim insurance company office, plans to go to college next year to study teaching and social work. She was president of the County 4-H Home Economics Council last year.

Miss Boyd, who will represent the 14 state poultry producers organization during the next year was crowned by Dianne Campbell, Pennsylvania Poultry Queen.

In the Quality division of the market egg competition held in conjunction with the exposition, the H. S. Foreman company of Elizabethtown R1 took top honors.



**LOW
LOW
PRICE
BEEFMIX**

... fastest growing beef feed

Big sales increases in recent years prove Eastern States BEEFMIX the No. 1 choice of northeastern beef raisers. And for good reasons: You get faster growth... heavier finishing weights... herd uniformity. BEEFMIX with 32% protein is the prefer-

red growing and finishing supplement... contains stilbestrol plus balanced proteins, vitamins and minerals.

- BEEFMIX gives you:
- 15% to 20% increased growth
 - Up to 10% better feed efficiency



Eastern States FARMERS' EXCHANGE
Headquarters: West Springfield, Mass.

PLEUGER SUBMERSIBLE PUMPS

Low cost installation
Completely Automatic

YOUR BEST PUMP BUY

The Pleuger Submersible Pump Type AS/LD is the most efficient of all water pumps for economical water supply for farms, cottages and households. Easy to install. Needs no prime and will not freeze. No maintenance after installation. The advanced design assures the utmost in simplicity, performance and long life.

PLEUGER SUBMERSIBLE PUMPS, Inc.
955 Harrisburg Ave., Lancaster, Pa.



LONDA BOYD

Placing the entries on quality alone, the judge awarded the county firm a Gold Award.

A Pennsylvania team took first place in poultry judging with a Maryland team finishing second.

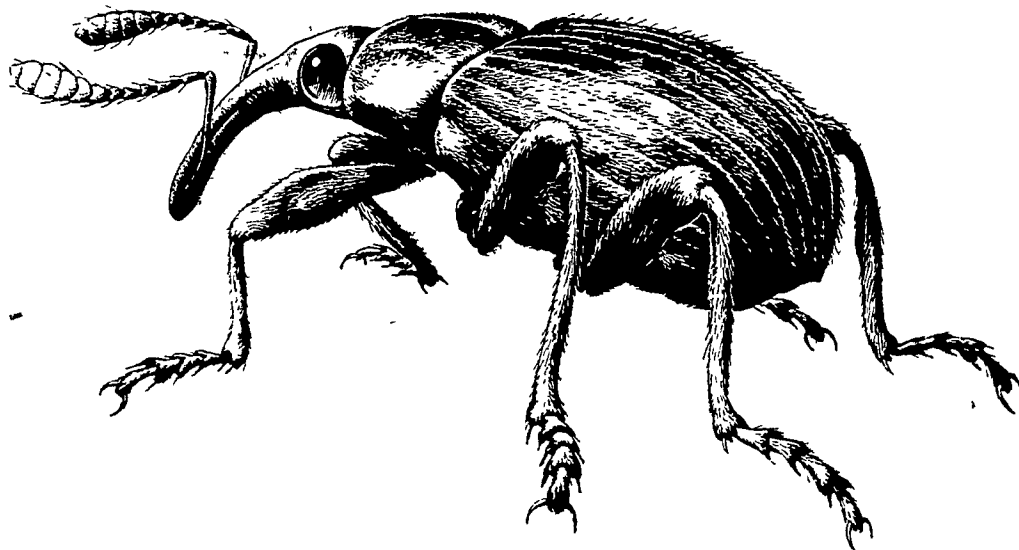
Jim Teets, a 17 year old West Virginia Future Farmer who borrowed \$200 to go into the poultry business when he was nine was named star poultry boy of the NEPPCO region.

Carroll Dunham of Southbury Connecticut was re-elected president of the Council at the group's annual meeting Wednesday.

Breeding sows twice instead of once during the heat period increases litter size by one or two pigs.

Patronize Lancaster Farming Advertisers.

WANTED—DEAD!



ALFALFA WEEVIL and Spittle Bug, too!

Your Custom Sprayer is using **ORTHO** Dieldrin

- | | |
|--|--|
| Richard R. Forry
LANCASTER EX 7-0035 | Melvin G. Lapp
ATGLEN LY 3-5717 |
| Herbert F. Gehr
STEVENS AN 7-6822 | LeRoy R. Pfautz
STEVENS AN 7-6015 |
| Kenneth H. Habecker
LANCASTER EX 3-4187 | Alvin F. Smoker
INTERCOURSE SO 8-8416 |
| Hess Bros.
MOUNT JOY OL 3-7195 | Harold Zook
LANCASTER EX 4-5412 |
| Benj. B. Landis
PARADISE OV 7-6535 | |



Dieldrin

Distributed by

**J. C. Ehrlich
Chemical Co., Inc.**
736 E. CHESTNUT ST.,
LANCASTER, PA.
EX 7-3721

USE DIELDRIN THIS FALL-- CONTROL-- ALFALFA WEEVIL NEXT SPRING

Alfalfa and clover fields sprayed with Dieldrin during October and November gives satisfactory control of alfalfa weevil and spittle bug the following spring. Order your supply now from



SMOKETOWN
Ph. Lanc. EX 7-3539