

Lanc Poultry Center

Broilers Fail To Hold Gains

Broilers at the September 28 auction at the Poultry Center lost about half the gain of the previous week as 37,450 head in 11 lots sold at prices of 13.5 to 15.4 for a sale average of 14.03.

A total of 8,350-cockerel roasters in five lots brought 19.7 to 20. Five lots containing 6,330 leghorn fowl made 7.5 to 9.1. One lot of 200 males brought 7.4 and one lot of 750 pullets brought 17.2.

The complete sale offered 68,130 head in 29 lots and sold 23 lots containing 53,080 head.

Following is the complete sale report with seller, grower in parenthesis, amount and breed, age in weeks and days, buyer and price.

CODE: WV - white vantage, LFY - leghorn fowl yearlings, IR - indian rivers, C - cocqerels, P - pullets, MX - martins cross, MJB - 1-martins JB1, WVXSR -

white vantage cross st. run.

1. John L. Stoltzfus, 500 LF, Roy E. Ream, 9; 2. Henry King, 80 LYF, Carl B. Risser, 7.5; 3. Miller & Bushong (Robert Thompson), 8400 IR, 8-6, NO SALE, 13.7 bid; 4. Same, Starr Poultry, 13.9; 5. Same.

6. M&B (Fred Sherick), 1700 WVC, 13, H. W. Long-acre, Inc., 19.8; 7. Same, W. C. Mellinger & Son, 19.8; 8. Mark Myer, 2600 WVC, 14-2 W. C. Mellinger & Son, 20; 9. Same, 1600 WVC, 14-2, Daniel K. Good, 20; 10. Same, 600 WVP, 14-2, NO SALE, 17 bid.

11. Same 2200 WVP, 14-2, NO SALE 17.3 bid; 12. Same, 1100 WVP, 14-2, NO SALE, 17.3 bid; 13. M&B (John O. Moyer, Jr.), 1800 WVP, 14, NO SALE, 17 bid 14. Harvey M. Zimmerman 750 WVXC, 14, Marvin Sweigart, 19.7; 15. Same, Daniel K. Good, 17.2.

16. Robert Noll, 2650 MX, (Turn to page 7)

Delmarva-Georgia

Sellers Resist Lower Prices

Live broiler prices averaged approximately 3/4 cent lower during the 24 hour period ending 10:30 Friday morning as 678,500 head at farms brought prices of 11.9 to 14.1.

Strong seller resistance was noted as levels decreased, but offerings were more than ample for the current slaughter needs.

Estimated slaughter for the week end was 694,000 head compared to the 752,000 head last week end.

The Delmarva broiler-feed ratio for the week ending September 22 was up 2 points at 3.0 when broilers brought 13.68 and mash cost the grower \$92.20 per ton.

"Our farmers deserve praise, not condemnation; and their efficiency should be a cause for gratitude, not something for which they're penalized."

— President Kennedy

Try a Classified

Weekly New York Egg Mkt.

From Monday, September 25th to Friday, September 29th

	Mon.	Tues.	Wed.	Thurs	Fri
Whites					
Ex. Fcy.					
Hywts 51	51	51	51	51	50 1/2-51
Fcy					
Hywts 46	46	46	46	45-46	45-46
Fcy					
Med 33	33	33	33	33	33
#1 Med 32	32	32	32	32	32
Pullets 20	20	20	20	20	20
P-wees 15	15	15	15	15	15
Browns					
Ex. Fcy					
Hywts 47	47	47	47	47	48
Fcy					
Hywts 45	45	45	45	45	45
Fcy					
Med 32	32	32	32	32	33
Pullets 20	20	20	20	19 1/2-20	19 1/2-20
P-wees 15	15	15	15	15	15
Mixed					
Fcy					
Hywts 44 1/2	44 1/2	44 1/2	44 1/2	44 1/2	44 1/2
#1 Med 31-32	32	32	32	32	32
Pullets 20	20	20	20	19 1/2-20	19 1/2-20
Stds 37 1/2-38	38	37	37	37	37
Checks 26 1/2	26 1/2	26 1/2	26 1/2	26 1/2	26 1/2

TREND: Top and mediums generally well cleared but undertone still irregular.

Copyrighted 1960 By Urner-Barry Co.

For an economical and practical program that works on a farm scale use **NEW JERSEY BASE-EXCHANGE NATURAL POTASH** (Green Sand) and **CALPHOS** (Colloidal Phosphate) Available in Bag or Bulk Spreading Service **Brooklawn Farm** 118 Kreider Avenue LANCASTER LO 9-1580 or See Your Local Dealer

CURTIS
BREEDING SERVICE

Represented Locally By:
WILLIAM H. WALKER
Ph. ST 6-2395
CLIFFORD N GIBBLE
Ph. MO 5-4252
RICHARD B HURST
Ph. EX 3-0945

Arthur L. Reist
SMALL GRAIN SEEDS
1050 EDEN ROAD
Seneca, Pennoll, Dual
Wheat, Wong Barley,
Rye
Certified - Uncertified
LO 9-2079

BEAUTIFUL WALLS OF CONCRETE MASONRY



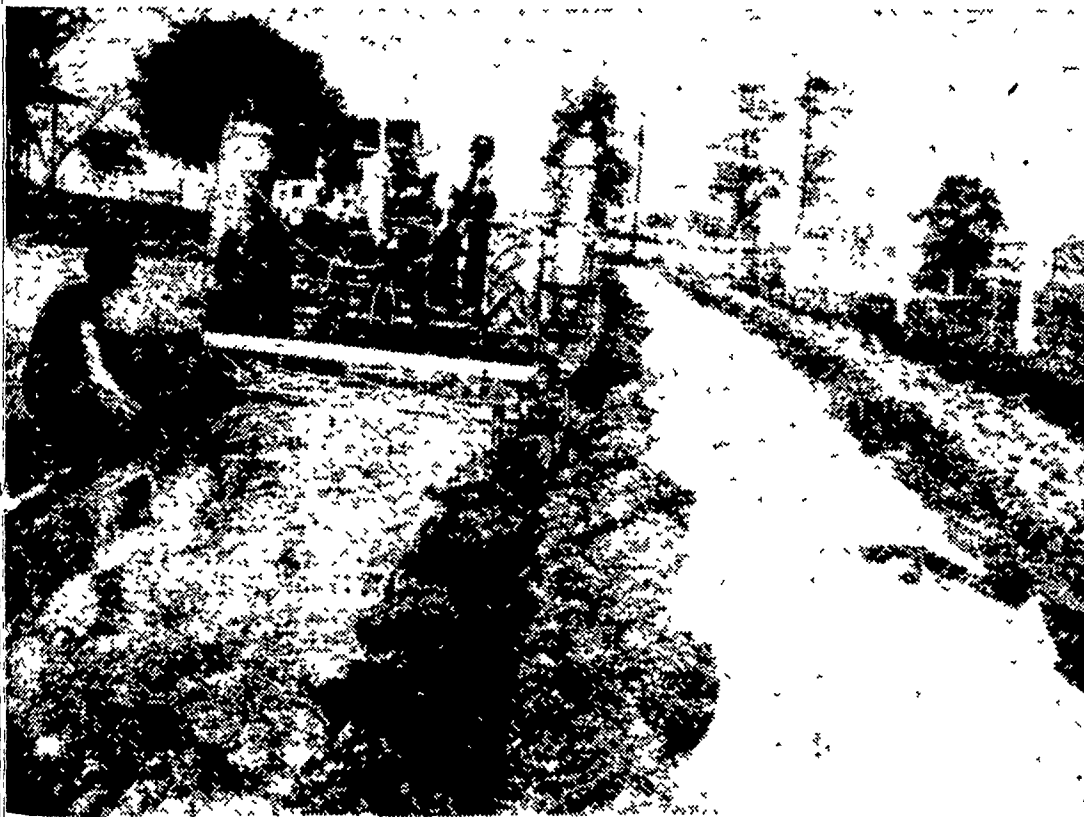
Use Concrete Masonry for Structural Beauty
New Holland Concrete Products
NEW HOLLAND, PA. ELgin 4-2114

BROZONE by

DOW

DOW

THE NEW SOIL FUMIGANT FOR TOBACCO SEED BEDS



Have BROZONE applied this fall and get Complete Weed, Disease and Insect Control.

You'll have more and healthier Tobacco Plants next Spring. Costs no more than steaming.

FOR DETAILED INFORMATION WRITE OR PHONE

HESS BROS.
S. Market St., FLORIN, PA.
OL 3-7195

R. C. HENNEY
R. D. #1 LITITZ, PA.
MA 6-5185

— OR —

J. C. EHRLICH CHEMICAL CO., Inc.
736 E. CHESTNUT ST., LANCASTER, PA.
EX 7-3721


PACKAGE PLAN

WIRTHMORE NEW

HI-ENER-G 16

For Layers

1. Seasonally formulated to provide the most efficient egg production.
2. Seasonally formulated for top egg quality and shell quality.
3. Added fat is included to increase the energy value.



CLEM HOOBER
INTERCOURSE, PA. PHONE SO 8-3431