

## Poultry Center Broilers Jump Two Cents

Broiler prices were up a two cents per pound the previous week at September 21 auction at Lancaster Poultry Center. A total of 37,690 head lots ranged from 15.2 to 18.8 for a sale average of 16.2. All broilers offered sold.

Four lots of pullets brought 19 to 20.2 for the 3,700 while a lot of 1,900 made 20.0. Two lots of heavy fowl brought 15.0 and four lots of leg-fowl made 8.6 and 8.8 for 5,500 head. Two lots of turkey hens containing 220 and 275 tom turkeys were sold at the 16.0 bid.

A complete sale offered 10 head in 31 lots and 50 765 head in 25 lots. Following is the complete report with lot number, grower in parenthesis and breed, age in days, buyer and

1. Irvin B Gingrich, 1100 SXP, 17-3, NO SALE. 19 bid 2 Same; 3 Miller & Bushong (Daniel Ebersole) 8600 WV, 9-2, Meader's Poultry, 15.7; 4 M&B (Moses Zimmerman) 900 WVP, 14-2, Roy E. Ream, 19.1; 5 Same, 700 WVP, 14-2, Daniel K Good, 19.6 Same 400 WVP, 14.2, John N Thomas 20.2; 7 John S Stoner Sr., 250 W-P F W C Mellinger & Son, 10.2; 25 males, W. C Mellinger & Son, 6.0; 8 M&B (Paul Livengood), 2000 IR, 8-6, Daniel K Good 15.5; 9. Miss Ruth Graves 200 WRF, W C Mellinger & Son, 10.2 10 M&B (Glenn R Siegrist) 1000 WVP, 9, Roy E Ream, 17.0.

11 Raymond Witmer 1000 WVP, 9-2 Carl B Risser, 15.7; 12 Robert Harnish, 1000 LF, V. J Koser Co, Inc. 8.6; 13 Same 2000 LF, V J Koser Co Inc. 8.8; 14 M&B (Jacob Ober) 2500 WV, 9-2 John N Thomas, 15.7; 15 Same (Frank Bradley), 250 TH, 23, Daniel K. Good, 22.

16 Same; 17 Same, 275 TT, 23 NO SALE, 16 bid; 18 M&B (Christ L Herr), 1700 WVP 18 Carl B. Risser, 20.1; 19 M&B (Arthur Leaman) 5000 W Mt., 8-3, Roy E Ream, 15.8; 20 Same 1700 WV, 9, Meader's Poultry 15.7.

21. Garden Spot Broilers (John L Herr, 650 WVC, 15-2, NO SALE, 17 bid; 22.

## Competition Boosts Prices

During the 24 hour period ending 10:30 P.M. Friday morning, Delmarva reported broiler prices averaged approximately one cent higher as a reflection of keen competition between buyers for the relatively light available offerings.

Prices paid and purchases reported during the period ranged from 14.30 to 15.50 for 754,600 head at farms.

A wait-and-see attitude developed among buyers in view of the increased asking prices. Estimated slaughter by eastern shore processors for the week end was 75%, 000 head compared to the 783,000 head last week end.

The Delmarva broiler-fed ratio for the week ending on September 15 was up one point from the previous week at 2.8. Broilers averaged 12.96 per pound and mash cost the grower \$92.97 per ton. The ratio for the comparable week a year ago was 3.6. The ratio six months ago was 3.9.

Same, 500 WVC, 15-2, NO SALE 17 bid; 23 Same, 1200 WVP 15-2 NO SALE, 18 bid; 24. Mark Myer, 1900 WVC 13.2 W C. Mellinger & Son, 20.25 George Neuman, 4000 WV, 9-2, Starr Poultry, 15.5.

26. J J Hess II (Eli Stolzfus), 800 LFY, Roy E. Ream, 8.6; 27 J W Eshelman & Sons (Red Rose Research Center), 1990 WV, 9-2, Daniel K. Good, 15.5; 28 D E Horn & Co. (Wm Wisenhart), 3000 WV, 9-6, to Daniel K Good, 15.2; 29. Paul H Gehman, Inc. (Davis S Hoover) 2400 IR, 9-1, Meader Poultry, 15.6; 30 Same, 2500 WV, 9-1, Meader Poultry, 15.6.

31. Amos B Hoover, 1700 LFY, Roy E. Ream, 8.6.

## Weekly New York Egg Mkt.

From Monday, September 18th to Friday, September 22nd

	Mon.	Tues.	Wed.	Thurs.	Fri.
<b>Whites</b>					
Ex. Fcy.					
Hywts	49	49	49	50	50
Fcy					
Hywts	43½-	43½-	43½-	44	45
Fcy					
Med	30½-31	31	31	31	32
#1 Med.	30½-31	31	31	31	32
Pullets	20	20	20	20	20
P-wees	15	15	15	15	15
<b>Browns</b>					
Ex. Fcy.					
Hywts	46	46	46	46	46
Fcy					
Hywts	43	43	43	43	44
Fcy					
Med	30	30	30	30	31
Pul.est	20	20	20	20	20
P-wees	15	15	15	15	15
<b>Mixed</b>					
Fcy					
Hywts	42	42	42	42	43½-
#1 Med	30	30	30	30	31
Pullets	20	20	20	20	20
Stds.	34-35	35	35	35-36	37
Checks	25½-	25½-	25½-	25½-	25½-

TREND: Market clearing well on top whites with a good call for medium now also quite general. Pullets still in surplus.

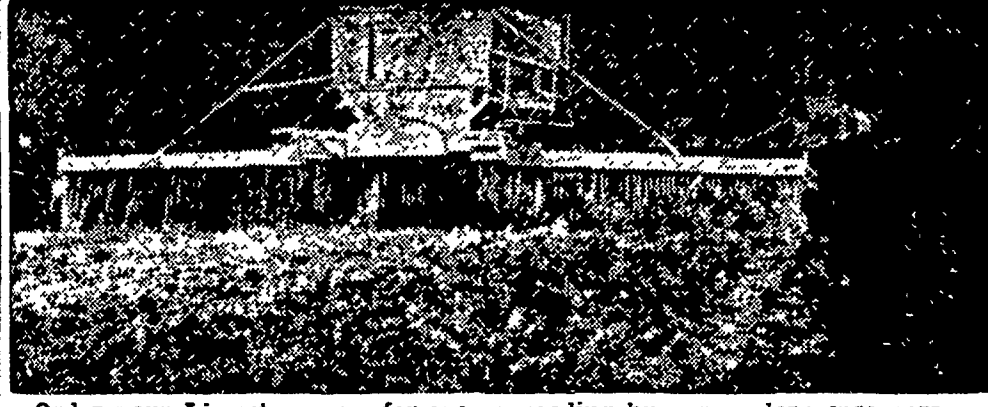
Copyrighted 1960 By Urner-Barry Co.

DE WV - white vantage  
P - pullets, C - cocker  
R - indian rivers, W Mt-  
mountains, WRF -  
rock fowl, SXP - silver  
pullets, TH - turkey  
TT - tom turkeys, LFY

**Arthur L. Reist**  
**SMALL GRAIN SEEDS**  
1050 EDEN ROAD  
Penna. Pennoll, Dual  
heat, Wong Barley,  
Rye  
Certified - Uncertified  
LO 9-2079

**CHAIN SAW SERVICE CENTER**  
New & Used  
**Snavelly's Farm Service**  
NEW HOLLAND EL4-2214

## MARTIN'S LIMESTONE



Order your Limestone now for even spreading by our modern spreaders.  
Quick Service Free Soil Tests Quality Limestone

**Ivan M. Martin, Inc., Blue Ball, Pa.**  
Telephones: New Holland ELgin 4-2112 Terre Hill Hillcrest 5-3455  
Gap Hickory 2-4148

## WINNING COMBINATION!!

Leghorns produced by WEAVER'S HATCHERY are in the top twelve breeds of the Nation's 165 stocks tested in Random Sample Tests.

12 STOCKS LISTED ON BASIS OF INCOME, WITH THREE OR MORE ENTRIES, WHICH ARE NOT SIGNIFICANTLY DIFFERENT IN INCOME AT 5 PER CENT LEVEL\*

Breeder	Strain or tradename	Income over feed and chick costs	% Laying	No. eggs per mort.	Feed per (lbs) 195	Alb men quality (Haugh units)
Wheeler Farms Inc.	K-137	\$2.60	7.2	237.9	4.16	83.8
Wheeler Farms Inc.	Commercial	2.51	11.6	230.6	4.17	84.6
Wheeler Farms Inc.	131	2.48	9.5	238.5	4.07	82.7
Wheeler Farms Inc.	K-155	2.45	10.7	233.4	4.26	83.5
Wheeler Farms Inc.	Mt. Hope Queen	2.42	14.4	226.5	4.20	83.9
Wheeler Farms Inc.	Criss Cross H25	2.42	11.1	228.2	4.22	82.0
Wheeler Farms Inc.	551	2.41	13.0	224.4	4.26	82.1
Wheeler Farms Inc.	H&N Nick Chick	2.41	9.0	235.4	4.31	84.5
Wheeler Farms Inc.	Starcross 288	2.41	10.5	235.7	4.31	82.0
Wheeler Farms Inc.	Honegger Layer	2.40	10.8	227.6	4.27	82.6
Wheeler Farms Inc.	934-C	2.40	10.5	234.5	4.09	77.2
Wheeler Farms Inc.	Hi-Cash	2.39	12.3	234.2	4.31	80.4

from USDA Combined Summary of 1959-60 Random Sample Egg Production Tests. Reprinted from September, 1961 POULTRY TRIBUNE FOR PRICE AND FREE OVEN TURKEY OFFER CALL

**WEAVER'S HATCHERY** Ph. Ephrata RE 3-0885 LITITZ, R. D. 4

**New Musser Leghorn FARMS PULLET**  
R.D. 1, MOUNT JOY, PA.

Your Invitation . . .  
to visit our booth  
AT THE  
**LAMPETER FAIR**  
Sept. 27-28-29

- Representatives will be on hand to assist you in any way possible.
- FREE informative literature available on all phases of Poultry and Livestock Management.



**PAUL M. RESSLER & SON**  
PARADISE, PA. Ph. Strasburg OV 7-6292