

German

(From page 1)
Kirkwood. Linde emigrated of Nottingham. While at the and made arrangements for to the U. S. shortly after Brown farm Linde met a her return to America soon

World War II under the German girl, in this country sponsorship of Arthur Brown for college graduate work,

After her student's visa expired Now Mrs Linde and the mother of two boys and a girl, she graciously served cake and iced tea to Herr Scherz and the members of the press in the shade of a large maple tree in the Linde front lawn

After a social chat in German, Scherz was shown the purebred Guernsey herd and the dairy barn on the farm Under construction by Linde and his farm workers is a large building to be used as a hay drying barn and machinery storage shed. The former machinery shed was destroyed by fire in July when a spark from a grinding wheel ignited some gasoline which was being used for cleaning parts Scherz showed much interest in the building and in two others which had been built by Linde "Do all American farmers do their own building?" he asked.

Not all farmers do their own building, he was assured, but American Farmers, even recently - transplanted ones, are known for their resourcefulness. "But here in America is so much help if you just ask," Linde said.

● Smith

(From page 1)

of Agriculture gave him its Superior Service Award for "superlative work" in beef cattle feeding and 4H Club livestock promotion. He was offered the post of deputy secretary in the Pennsylvania Dept of Agriculture in 1955, but declined, preferring to stay in extension work.

His 4H Club exhibitors have won 22 grand championships and 15 reserve titles

in baby beeves and pens of lambs at the Pennsylvania State Farm Show At State 4-H Days his teams have taken 48 championships in judging and demonstration contests He organized a 4H council for his county, and the Lancaster Senior Extension Club for older youth

At age ten he became a working partner with an older brother and his mother in the operation of their 152-acre farm at Rea on the death of his father He graduated from Hickory High School at age 16, attended Washington Business College, and in 1936 got a degree in animal husbandry at Penn State

He served nine months as assistant secretary - treasurer of the Uniontown Production Credit Association, then transferred to Penn State's county agent staff. He was made assistant in Lancaster county and since 1949 has been county agent.

Smith is president of the Lancaster Rotary Club, a director of the Pennsylvania County Agents' Association, and a member of the arrangements committee for the NACAA New York meeting. Mrs. Smith, formerly V. Ruth McCalmont, is the daughter of Mr. and Mrs. S. L. McCalmont, Hickory.

● Chicago Yards

(From Page 2)

er Bulls 25 to 50 higher Hardly enough vealers on sale to make a market.

Stockers and feeders steady to 50 lower, mostly about steady

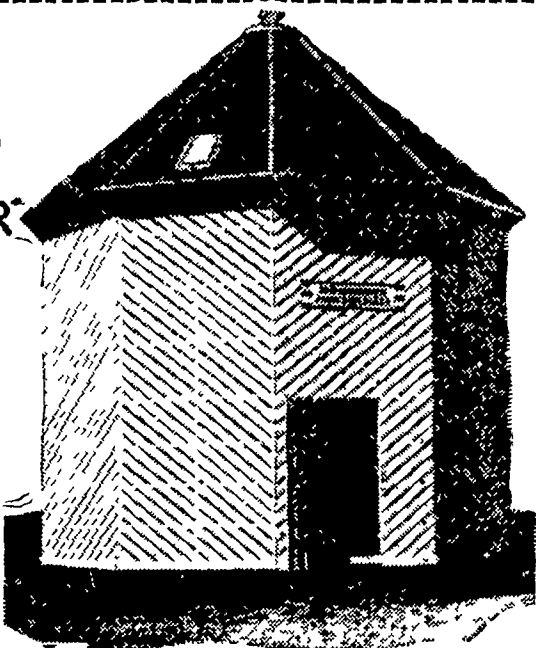
A few loads of choice and prime 1,300 to 1,500 pound steers unsold late, but clearance much broader than last week Three loads prime 1-175 to 1,300 pound steers early 25.75. Best price Wednesday 25.50 for three loads 1,225-1,325 pound steers Most choice and prime steers 22.25-25.25 Bulk of the choice 900 to 1,300 pound weights 23.50 to 25. Good 900-1,300 pound steers 22-23.50.

Mixed choice and prime heifers at 875 to 1,025 lbs. early were 24-24.25. Comparable grades late weighing up to 1,075 pounds 23.50-24 Bulk choice heifers 22.75-23.75 Good 21-22.50

Cutter, utility and commercial cows 13.50-16.00 with a few commercial cows 16.25 to 16.50. Utility and commercial bulls 18-20.50.

Few good vealers 22-25 Choice absent Good and choice 800-1,000 pound feeder steers 22-24 Two loads of medium feeders 21.50 Medium 600-735 pound stockers 21-23.25

**NEW
IMPROVED
HONEGGER
CORN
CRIB**



Less spoilage and far superior to wire cribs in maintaining good grain quality.



LOW COST - WE PAY FREIGHT
(As low as .43 per bu)

NO EXTRAS TO BUY. All bins and cribs complete with roof, floor, vertical ventilator and horizontal ventilator that also serves as shelter drag space.

STRONG. Diagonal siding over strong 2 x 4 framework. Fastened at each joint with heavy bolts and special steel plates.

EASY TO ERECT. Sections are completely factory built and painted, ready to bolt together.

SEE YOUR NEAREST HONEGGER DEALER

JOHN J. HOOBER, Gordonville, Pa.

DAVID B. HURST, Bowmansville, Pa.

ELVERSON SUPPLY CO., Elverson, Pa.

WHITMOYER'S FEED SERVICE, Mt. Aetna, Pa.

OR WRITE OR PHONE

215 So. 8th St., AKRON, PENNA.
Phone Ephrata RE 3-4702

R. H. LAMBERT

1961 SPECIAL CATTLE SALES

Abingdon Livestock Market, Inc.

ABINGDON, VIRGINIA

PHONE MArket 8-3551

SALE EVERY THURSDAY - ALL CLASSES OF LIVESTOCK

500-1000 LB NATIVE STEERS - NATIVE STEER & HEIFER CALVES

1700 TO 2800 HEAD FOR EACH SALE

First Feeder Steer Sale - Tuesday, September 19th

Angus Steer Sale - Tuesday, October 3rd

Second Feeder Steer Sale - Tuesday, October 10th

State Feeder Calf Sale - Tuesday, October 17th

Tri-State Feeder Calf Sale - Tuesday, October 24th

Third Feeder Steer Sale - Tuesday, October 31st

ALL CATTLE SALES START 1:00 P. M.

Feeder Pig Sale (1000) - Tuesday, November 7th

Feeder Pig Sale (1000) - Tuesday, November 28th

PIG SALES START AT 3:00 P. M.

All pigs will be vaccinated for Cholera, Wormed, and De-Loused. They will be officially graded by Virginia Division of Markets and will be weighed-in and sold at 3:00 P. M. on sale date.

Tazewell Livestock Market

TAZEWELL, VIRGINIA

PHONE YUkon 2-9921

SALE EVERY MONDAY - ALL CLASSES OF LIVESTOCK

Annual Feeder Steer Sale - Wednesday, October 11th

600 NATIVE STEERS - 500 - 1000 LBS.

State Feeder Calf Sale - Wednesday, October 18th

800 NATIVE STEERS AND HEIFER CALVES

All cattle in the sales at both markets will be officially graded by Virginia Division of Markets and will be weighed in on the day preceding the sale date. Check with your County Agent, the Sales Committee or the Markets for further information.

CATTLE SALES START PROMPTLY 1 P. M.

FOR ADDITIONAL INFORMATION WRITE OR CALL

ABINGDON LIVESTOCK MARKET, Inc.

A FEDERALLY SUPERVISED MARKET

ABINGDON, VIRGINIA

PHONE MArket 8-3551

**CHAIN SAW
SERVICE CENTER**
New & Used
Snaveley's Farm Service
NEW HOLLAND EL 4-2214

LOANS
FOR ANY FARM PURPOSE
MADE THE FARMER'S
WAY
**LANCASTER
PRODUCTION
CREDIT ASS'N**
411 W. Roseville Rd.
Lancaster, Pa.
Ph. Lanc. EX 3-3921

**CURTIS
BREEDING SERVICE**
Represented Locally By:
WILLIAM H. WALKER
Ph. ST 6-2395
CLIFFORD N. GIBBLE
Ph. MO 5-4252
RICHARD B. HURST
Ph. EX 3-0945