

Public Sales

PUBLIC SALE
of
A VALUABLE FARM
and **WOODLOT**

to be held
SATURDAY, SEPT. 30, 1961
The undersigned will offer at Public Sale on the premises located 1 mile north of Manheim, 1/4 mile off Route 72 near Hernley's Mennonite Church, in Rapho Township, Lancaster Co., Penna.

74 ACRES
more or less, 50 acres in contour farming, 24 acres in meadow with running stream.

Erected thereon is a **2 1/2 STORY FRAME DWELLING** consisting of 10 rooms—5 rooms first floor, 5 rooms & bath second floor, plus hot & cold water

LARGE FRAME BANK BARN with hog stable & straw shed attached, 2 cow stables for 17 cows, steer stable tobacco shed with stripping room & dampening cellar, large chicken house for 900 chickens, egg cleaning room & cooling room, 500 bu outside corn crib and 3 brooder houses on premises 2-car garage & macadam driveway

Buildings have good roofs. Gravel soil in high state of cultivation. Young fruit trees on premises. This property is an ideal location—close to schools & churches

Anyone interested in a farm don't miss this sale. Also **WOODLOT** of 3A near Union Square will be sold

Persons wishing to view the premises may do so by calling Auctioneer, Manheim MO 5-4136 for an appointment

Sale to begin at 2:00 p.m. on the farm when terms & conditions will be made known by:

ANNA B. BRUBAKER
Trust

By Lancaster County National Bank,
Trustee

Rufus W. Geib, auct.
Appel, Ranck, Levy & Appel, Atty's.

Try a Classified

SALE REGISTER

Sat. Sept. 9 — 12:30 p.m.
Pub. sale Real Estate, Farm Imp. and Household goods. 90 A. farm and 20 dairy cows 7 Mi. S. of Lancaster along Rt 324 1 mi. N. of Marticville. By Maris W. and James H. Hess. Shreiner, Auct

Sat. Sept. 9 — 2 p.m.
Pub. sale of 61 A, dairy and tobacco farm and 3 A. woodlot. In Elizabeth Twp. along road leading from old Snaveley Mill to Brickerville Estate of Landis Huber Landis, Auct.

Auctioneers

Auctioneer
Instructor
Col R E. Knotts
Gallipolis, Ohio
Home Study Course \$25 00
Complete with Diploma
Also easy payment plan
Member of National A.A.

Tues., Sept. 12 — Pub Sale
of Real Estate. Two adjoining farms along Rt. 222 about 1/2 mi. S. of Quarryville Borough in E Drumore Twp. 124 A and 182 A. Dairy farms Estate of Albert H. Fritz and Charles Fritz, Bradley, auct.

Tues., Sept. 19 — 2 p.m.
Pub. sale of 97 A farm located midway between Ephrata and Akron, fronting on Parkview Heights Road and Steinmetz Road By John D. and Annie Z. Weaver. Horst, Auct.

Sat. Sept. 23 — 2 p.m.
DST - Pub Sale of 137 A. dairy and tobacco farm 8 mi. S. of Lancaster along old Rt. 222 just N. of Refton By John E. Riehl. Diller and Kreider, Aucts.

Sat. Sept. 30—Pub Sale of farm and woodlot on road from Rt 72 to Elizabethtown One mile West of Ruhl's Church and 1/2 mi W of Union Square By David Stoner, C. H. Wolgemuth, Auc

NORTHERN VIRGINIA FEEDER CATTLE SALES
Farmers Livestock Exchange, Inc.
WINCHESTER, VIRGINIA

6,000-Angus-Hereford-Shorthorn-6,000
Yearling Sale—September 22 - 1 P.M. (DST) 1,500 Steers & Heifers - polled or dehorned - 500 to 1000 lb.

FEEDER CALF SALES
First Sale—October 6, 1961 - 1 P.M. (EST) 3,000 (Feeder Calf Show - 10 A.M.)
Second Sale—October 27, 1961 - 1 P.M. (EST) 1,000 Steers and Heifers - 300 lb. to 700 lb. Polled or dehorned - Vaccinated Blackleg, Malignant Edema and Hemorrhagic Septicemia. Heifers from Bangs and TB tested herds and vaccinated with "Scrain 19" Guartec No Breeder or Stag sales state sponsored and graded Eligible for interstate shipment.

For Information - Write or Phone: MO 2-1211
NORTHERN VIRGINIA LIVESTOCK PRODUCERS' ASSOCIATION, INC.
I. Fred Stine, Sale Mgr. - Box 440; Winchester

Sat. Sept. 30 — 2 p.m. - extension foods, specialist, Pub. sale of 74 A. farm and explains that eggs left in a 3 A. woodlot 1 mi. N. of warm car on an extended Manheim off Rt. 72 near the shopping trip lose quality Hernley's Mennonite Church. just as they do if left in a Trust. Geib, auct.

As early as 1859, 24 news- It pays to buy eggs from papermen covered the U. S. refrigerated cases and get Senate for 21 newspapers them into the home refriger- and the Associated Press, ator as soon as possible. while 51 reporters covered Louise Hamilton, Penn State the House of Representatives

PUBLIC SALE

— OF —
VALUABLE REAL ESTATE

Saturday, Sept. 23, 1961

Located 8 miles south of Lancaster, along old 222, just north of Refton, in Strasburg Twp., Lancaster Co., Pa.

137 Acre Dairy and Tobacco Farm

Approximately: 93 acres tillable, 34 acres in meadow and pasture, 10 acres of woodland.

Buildings consisting of a

STONE BANK BARN

room for 20 cows, 20 steers, 2000 broilers, horse stable for 10 head Silo, Milk house, Corn barn, etc.

OLD STONE HOUSE

two wells, nice stream of water running through pasture, Pequea creek borders the farm on the west.

This is a good cropper, with about 700 ft frontage along old 222.

10% down payment on sale day, balance on or before April 1, 1962.

Sale at 2:00 D.S.T. when terms will be made known by:

John E. Riehl
WILLOW STREET RI

Diller & Kreider, Aucts.
Ralph W. Eby Jr, Attorney

PUBLIC SALE

— OF —
VALUABLE REAL ESTATE

Tuesday, Sept. 12, 1961

1:00 O'CLOCK D.S.T.

Situated along west side of Route 222 about 1/2 mile south of Quarryville Borough in East Drumore Township, Lancaster County, Pa. Properties known as Albert H. Fritz Farms.

FARM #1 contains 182 acres, 9 perch, more or less erected thereon is an **8 ROOM BRICK DWELLING** with summer kitchen, bath, hot water oil heat (summer-winter hookup)

LARGE FRAME BARN equipped with 49 comfort stalls, 9-box stalls, barn cleaner and milk dumping station with glass pipeline leading to milkhouse.

MILKHOUSE equipped with 600 gallon milk tank, automatic oil heater, shower room, toilet and washbowl.

2 LARGE CEMENT STAVE SILOS.

TOBACCO SHED with large dampening cellar and stripping room.

Cornbarn, wagonshed and Garage combined. Chicken house, hog pen and other buildings.

Also erected on said property is a **5 ROOM TENANT HOUSE** with bath, hot air oil heat. Well on premises.

FARM #2 contains 124 acres, 108 perch, more or less, situated on west side of Route 222 adjoining Farm #1 on the south

Erected thereon is an **8 ROOM FRAME DWELLING** with heat, running water and electric

BANK BARN with tobacco shed attached, dampening cellar and stripping room.

Other buildings include hogpen and cornbarn

Macadam lanes to both properties

Both have adequate meadowland and running water

Farm Pond on #1. All land in high state of cultivation

These outstanding farms, ideally located, are worthy of the attention of anyone interested in farming on a large scale.

Inspection of dwelling may be made August 26, September 2 and 9 by contacting Earl Harnish, phone ST 6-3730

Sale to be held on Farm #1 at 1:00 p.m. D.S.T., when terms and conditions will be made known by the undersigned

F. MARIAN FRITZ
FLORENCE M. KEEFER
CLAIR L. WADE
LANCASTER COUNTY NATIONAL BANK
Executors of the estate of
ALBERT H. FRITZ, Deceased
And the Devises in the Estate of
CHARLES FRITZ, Deceased

Kersey Bradley, Auctioneer
Windolph, Burkholder and Hartman,
Paul F. McKinsey, Attorneys

ATTENTION FARMERS!

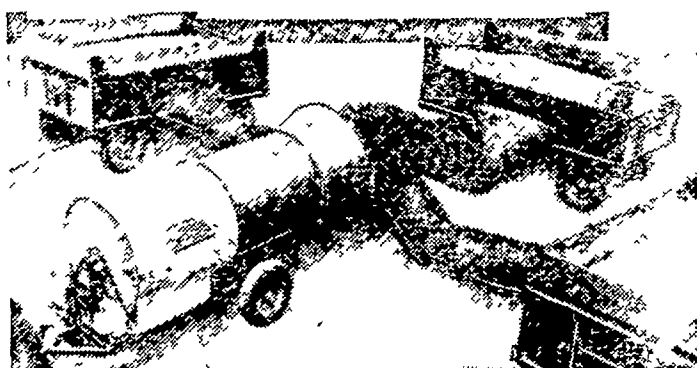
DON'T LET YOUR TOBACCO CROP BE RUINED!

Ventilate with a Dryer or Feeder

Prices Start at \$475. up



LOW DOWN PAYMENT
36 MONTHS TO PAY



Models in:

- ELECTRIC
- OIL FIRED
- PTO
- BOTTLED GAS

D. L. Diem & Sons

LITITZ, PA.

PHONE MA 1