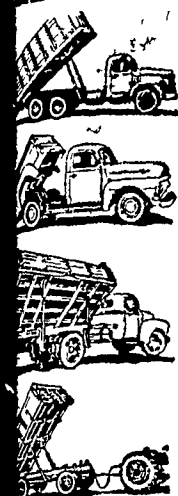


Full Market Reports
Lead Lancaster Farming

Half-way measures will be adequate only if you double the dose.

Religion is a must for those who expect to make a happy landing.

HARSH HYDRAULIC HOISTS



The 32 available models come to you with a wide range of lifting capacities ranging from 3½ to 20 tons for your truck, pickup, or trailer. The smooth, trouble-free action of a HARSH HOIST has a fast lifting time of from 12 to 160 seconds, which allows more time for actual hauling.

These hoists come to you at an average cost of only 16¢ a day as compared to the \$10-\$15 a day you now spend to manually unload your truck.



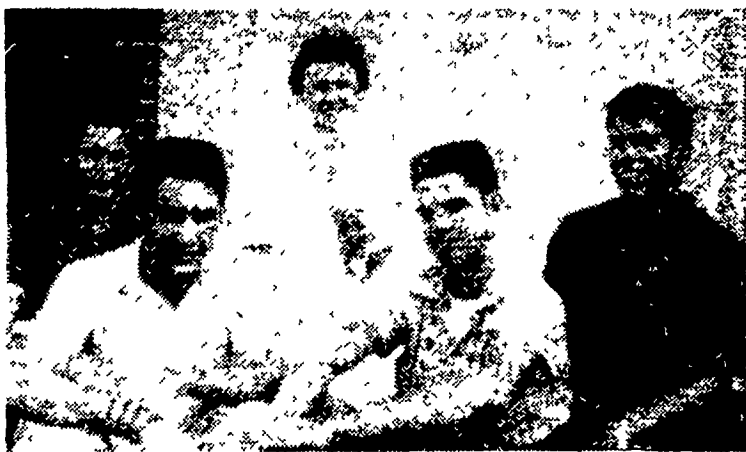
To design and build a light-weight, low-costing truck hoist suitable for all types of farm use, priced within the average farmer's budget was the aim of "Bud" Harsh when HYDRALLICS UNLIMITED MFG. CO. began operations. This hoist was built and is now in use throughout the nation.

The HARSH HYDRAULIC HOIST averages only \$328.52 (including Federal excise tax) and maintains a low taxable weight which averages 273 lbs. These economical hoists are built for either back or side dumping, depending upon your need.

Save costly time and eliminate back-breaking labor by unloading with a HARSH HYDRAULIC HOIST engineered for economical, speedy, and durable farm use.

MANN & GRUMELLI FARM SERVICE
2, QUARRYVILLE

PHONE ST 6-3630



LANCASTER COUNTY'S REPRESENTATIVES to the summer conference of the Pennsylvania Association of Farmers Cooperatives at Juniata College, Holidaysburg, were welcomed back to the Garden Spot by Miss Milkmaid of 1961. As they posed on the steps at Southeastern Penna. Artificial Breeders Cooperative are, first row, 1 to 4, Elvin Hess, Bareville R1, and John W. Eby, Jr., Gordonville R1; second row 1 to 4, Jerry Snader, Ephrata R1; Kathleen Hamm, Miss Pa. Milkmaid and Kerry Fritz, Lititz R3. —L. F. Photo

Farm fires in 1959 resulted in an estimated property loss of \$174 million, says the U. S. Department of Agriculture.

Penna. Leads In Ice Cream Production

Dairy plants in Pennsylvania during 1960 produced a total of 751 million gallons of ice cream, enabling the Keystone State to maintain its position as the leading state in the manufacturing of this item. New York State with a production of 735 million gallons was second. Compared to a year earlier both Pennsylvania and New York production gained one percent each.

Production in plants with an annual output of 20,000 gallons or more (primarily for wholesale) accounted for 95 percent of total ice cream production as compared with 92 percent of the total in 1959. Approximately 92 percent of total output was hard frozen products as compared with the 1959 figure of 94%.

Ice milk output registered a 17 percent increase over 1959 and reached a new high of 60 million gallons. It also accounted for 7 percent of total frozen products; an increase of 1 point. The number of establishments producing this item reached 813, a new high. Of this number about seven-eighths are classified as counter-freezer establishments.

Milk sherbet production at 29 million gallons registered a 6 percent decline; the first substantial decline since '46 when production dropped sharply following the record war-time demand of 1943 through 1945.

Mix output for ice cream at 393 million gallons declined 7 percent from the 1959 level.

● Farm Bill

(From Page 1)

the bill included a three year extension for overseas of U.S. farm surpluses for foreign currencies.

Expansion of authority to set up federal marketing orders. This authority was sharply reduced from the broad powers originally proposed by Freeman.

An extension of the National War Act for four years instead of three years voted by the Senate and five years voted by the House.

Liberalization of the agricultural credit extended by the Farmers Home Administration.

A five year extension of the special school milk program.

Dropped from the bill was a House provision which would have permitted the donation of farm surpluses for feeding of inmates in state and local prisons.

Elender said the program should win prompt Senate and House approval and the signature of President Kennedy.

Successful Dairyman Says:

Farm Bureau's DARI-PAK Program Right For Me

Russel Kreider, Quarryville, R. D. 1, is feeding his entire herd of "40" Holsteins & Guernseys, Farm Bureau's 14% DARI-PAK



He especially likes:

1. MILKMAKING POWER of Dari-Pak — milk production good.
2. GRAIN EXCHANGE PROGRAM — retail price for my grain.
3. PALATABILITY of Dari-Pak — my cows really go for it.
4. CONVENIENCE & ECONOMY — I save time and labor.

Get the exciting details of Farm Bureau's new popular DARI-PAK — you'll like the many advantages of our feeding program. Two modern feed manufacturing plants (New Holland & Quarryville) assure prompt delivery of quality "mill fresh" feed. Two protein levels, 14% and 16%, now available in this tasty coarse textured ration.

START TODAY...FEED THE FARM BUREAU WAY!

Qualified FIELDMEN are anxious to serve and assist you in designing a PROFITABLE DAIRY FEEDING PROGRAM.



For Prompt, Courteous Service, In Bags or Bulk, Call . . .

Lancaster	Manheim
EX 4 0541	MOhawk 5-2466
New Holland	Quarryville
ELgin 4-2146	STERling 6 2126