



POULTRYMEN LOOK AT COWS on the farm of William Myer. Members of the Lancaster County Poultry tour saw a pole barn-milking parlor set up as well as poultry housing on their tour this week. Here William Myer, center, explains his green chop feeding program to Assistant County Agent Winthrop Merriam, left, and Earl Hershey, tour director, Landisville. Myer milks 90 cows on his farm north of Myerstown, in Berks County.

● Poultry Tour
(From Page 1)

30 more." Myer said. Myer has two bunker silos under roof where he stores both grass and corn silage. He feeds the cows through a gate and says that there is no need to break down the face of the silage for the cows. They pull down what they eat and clean it up before the gate is moved forward. "We don't have any trouble with fighting," Myer said. "Unless we forget to push the gate up and the cows get hungry." Each day as the

feeding floor is scraped clean, the gate is pushed forward with the tractor.

The first year I bought good hay, Myer said, and I couldn't get the 90 cows to eat 30 tons during the winter. If they have good silage they won't eat much hay.

In the twelve stall herringbone parlor Myer says two people can milk a cow per minute.

At two commercial establishments the poultrymen saw the manufacture of pharmaceuticals and the dressing of poultry.

● Invention
(From page 11)

rural institutions conflict with values important to rural people."

Dr. John recommended continued research to expand knowledge of the basic principles underlying rural community life.

He declared the goals and aspirations of rural people are changing and expanding. This has been brought about, he said, through increased contacts with urban centers, higher incomes, and new awareness of opportunities for higher income and better levels of living.

A knowledge of new goals and aspirations is necessary for intelligent guidance and leadership, he noted.

At Myerstown, Whitmoyer Laboratories played host to the group exhibiting the plant where medicines and mineral feeds are formulated. The poultry dressing plant of Hauer and Grimes showed the group their operation which employs 135 persons in the processing of 40,000 head per day. Much of the poultry from the plant, it was learned, goes into frozen TV dinners.

Raymond Musselman at his Bethel R1 farm showed the group his homemade feed tank with a 40 ton capacity. He buys feed in bulk and feeds 13,000 laying hens by automatic feeder.

A Chicken Barbecue lunch was served by the county poultry association.

Hay Conditioner Pays For Self Studies Show

Research indicates that hay-crushing machines can slash alfalfa hay field curing time in half.

Illinois researchers report experiments in which conditioned hay, cut at 9:00 a.m. averaged 75 per cent moisture. By 2:00 p.m. the following day, the moisture had dropped to 16 per cent.

Untreated hay from the same field, cut at the same time, showed about 30 per cent moisture at the end of the same drying period.

Researchers noted similar drying advantages for conditioned second and third-cutting hay. Hay containing 68 per cent moisture, cut and conditioned at 9:00 a.m. was down to 20 per cent moisture by 5:00 p.m. the same day. Unconditioned hay from the same field still had 25 per cent moisture.

Crushed hay in all tests was ready for baling at least a day earlier than uncrushed hay.

Fast curing isn't the only advantage of crushing. It can save up to 10 per cent more hay by preventing loss of leaves and small stems

handling after rains. Crushing also saves vitamin A, since hay is exposed to sun and rain for a shorter time. In addition, rapid curing saves protein that otherwise could be lost in shattered leaves.

Hay crushers crack stems lengthwise and reduce them to the equivalent of several smaller ones. The process opens up the moist inner parts of the stems, bringing them into more direct contact with the air. As a result, the stems dry almost as fast as the leaves.

CLIP POULTRY RANGE

Best results are obtained by keeping the poultry range clipped short. Tender, succulent forage has the greatest feeding value for poultry, and F. H. Leuschner, Penn State extension poultry specialist, says the top 2 or 3 inches of grass and legume has a protein value equal to the best growing mash.

Last year the \$6.4 billion that it cost Americans in traffic accidents could have been bought and paid for one-third of all the farm machinery in the nation.

Patronize Our Advertisers

The Southern Lancaster County Community Fair Association

Will Sponsor a

Chicken Barbecue

SAT., AUG. 5
4 - 8 P. M.

At the American Legion Park, Quarryville.

Rain or Shine.
Take out orders.

YES, it will PAY you to use our natural materials to produce healthy plants

NEW JERSEY POTASH
(Green Sand) and

CALPHOS
(Collodial Phosphate)

Available in Bag or Bulk

CALL LO 9-1580

Brooklawn Farm

118 Kreider Avenue
LANCASTER LO 9-1580
or See Your Local Dealer

CERTIFIED WHEAT

- RED COAT
- PENNOLL
- DUAL
- SENECA

CERTIFIED BARLEY

- HUDSON
- WONG

REIST SEED COMPANY

MT. JOY
Ph. OL 3-3821

1941—20th Anniversary—1961

SUMMER SALES PROMOTION

Now-Bigger Than Ever!

SAVE—Special Anniversary Prices

MANY—MANY SPECIALS

See Us Today!



Charles B. Hooper

INTERCOURSE PH. SO 8-3501

NOW—

control tobacco insects with one material

NEW Thiodan[®] INSECTICIDE

for control of

- APHIDS
- BUDWORMS
- HORNWORMS
- FLEABEETLES

For long-lasting residual control and safety, Thiodan is the recommended material for tobacco insect control. Thiodan is easy to apply as a dust or spray. Ask your County Agent or local Niagara field man.

NIAGARA CHEMICAL DIVISION



Local Niagara Distributors

N. G. Hershey

& Son
MANHEIM
MO 5-2271

Clem Hooper

INTERCOURSE
SO 8-3431

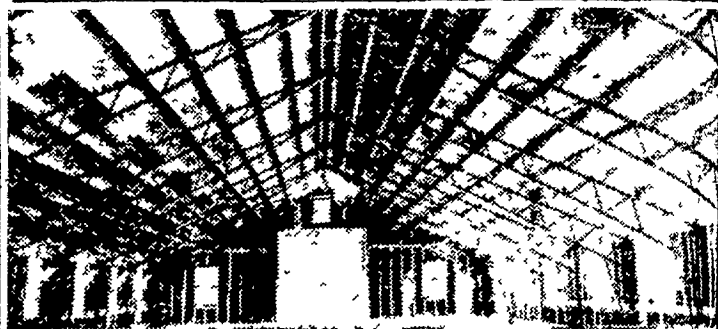
ZARTMAN'S ROLLER MILLS

E. F. ZARTMAN, PROP.

Buyer Of Milling Wheat and Grain Storage

LITITZ, R. D. 1

Ph. MA 6-2296



BEFORE you build INVESTIGATE



Big Dutchman DUR-A-FRAME
Clear Span Steel Trusses

- ✓ wall-to-wall post-free interior
- ✓ 34, 40, 50, 60, 70-ft. CLEAR spans
- ✓ easy, fast, 3-bolt assembly
- ✓ economical—designed for use with standard materials and sizes

SIZES			
Side Wall	Clean Span	Side Wall	Clean Span
6'	x 34'	8'	x 50'
6'	x 40'	14'	x 50'
8'	x 40'	8'	x 60'
12'	x 40'	16'	x 60'
16'	x 40'	8'	x 70'

UNLIMITED APPLICATIONS

- Warehousing • marinas • cement block storage
- loading barns • machine sheds • poultry buildings
- grain storage • airplane hangers • produce storage
- light & heavy manufacturing • used car lots • restaurants • bowling lanes • school bus barns • and dozens more!

Big Dutchman DUR-A-FRAME Division

407 W. Washington • Zeeland, Michigan

CONTACT YOUR LOCAL DEALER TODAY!

KUIPERS BROS., Inc.

NEW HOLLAND

Phone EL 4-5111