

K-137 KimberCHIKS...



10¢ to 34¢ MORE NET INCOME THAN OTHER MAJOR EGG STRAINS*
(35¢ more than average entry in 15 tests)

*Based on final reports in 1959-60 Random Sample Tests in Ariz., B.C., Calif., Fla., Ia., Minn., Mo., C.N.Y., W.M.Y., N.C., Pa., Tenn., Tex., Utah, and Wisc.

In the three 1959-60 tests in which the new K-155 Kimberchik was entered, it equalled the well-known K-137 in net income.

Have us reserve your 1961 Kimber pullets now!

Longenecker's Hatchery

ELIZABETHTOWN, PA.

EMpire 7-1545

ANOTHER Ounce of Prevention!



Our entire service organization is dedicated to assist the producer in any way it will benefit him.

Daily we are called upon to render service to many of our clients in . . .

PLANNING

PROGRAMMING

MANAGEMENT

MARKETING

FEEDING

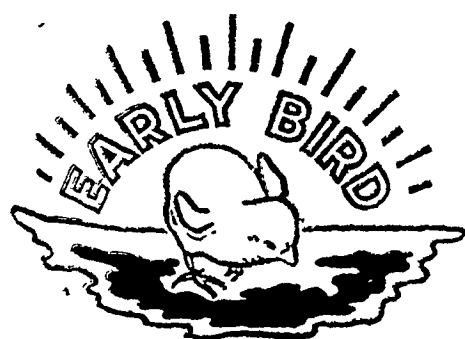
AND

DISEASE PREVENTION.

Especially in this last item "extreme care" has always been the watchword. As an additional aid to sanitation our service men now have been furnished with polyethylene pull-on boots (as pictured above) to help prevent spreading disease.

Early Bird Feeds and Good Management A Winning Combination For Any Poultryman

May we serve you? Just call Lancaster, EXpress 2-2145 collect.

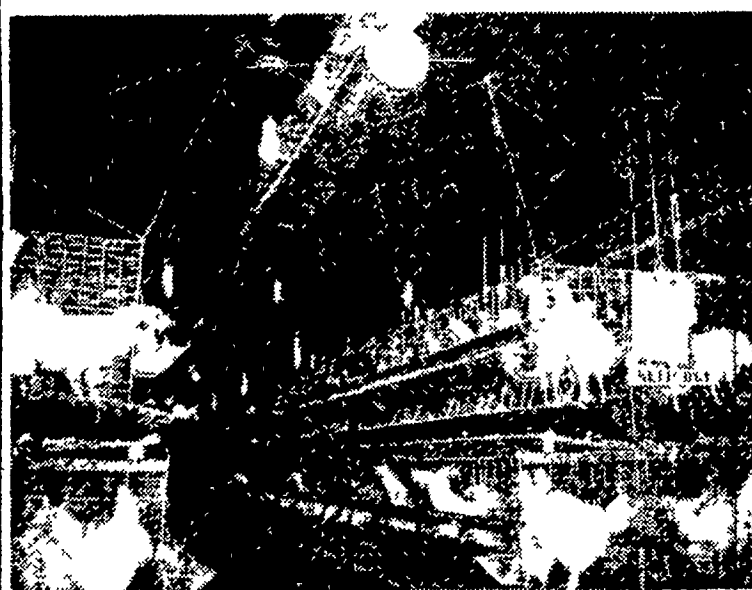


Miller & Bushong, Inc.

Rohrerstown, Pa.

Ph. Lancaster EX 2-2145

"Finest Service Anywhere"



LIGHT AND VENTILATION in this poultry house at Gordonville R1 are supplied by electricity. Forced air introduced through the pipe at the ceiling keeps the temperature from going too high in the summer, and the insulation on sides and overhead of the building is expected to keep the temperature above 55 degrees in the winter. Lights burn a specified number of hours each day and are turned on and off electrically. Scrapers under the cages remove manure to the outside of the building. —L. F. Photo

● Poultry House

(From Page 1)

directly above the feed trough supplies the hen with the nutrition necessary for high production.

After the hen is placed in the cage, at 20 to 25 weeks of age, she never moves from place to place in the house. When nature tells her the time has come to lay her egg, she drops it on the wire floor of the cage which slopes slightly toward the front. The egg rolls to a platform in front of the cage and out of reach of the hen. There it lies in readiness when Mike or Norma make their frequent rounds with the egg gathering cart.

Since there is no litter into which the egg must be dropped, there is less chance for the egg to become soiled, and since the ventilation in the house is forced the egg begins to cool immediately.

All eggs in the house are gathered on plastic egg case filers and taken immediately to the egg room. The eggs, 30 per filler, are run through the washer-sanitizer to remove any dirt and seal the pores and aid in keeping the (Turn to page 6)

● Corn Crop

(From page 4)

A 6 per cent smaller oat crop is in prospect. Total production is expected to be 26.1 million bushels from 607,000 acres. A great deal of trouble was had by farmers in getting oats planted this spring because of cold, wet weather. Some acreage was abandoned.

Barley is the only grain crop to show an acreage increase. Some 7.4 million bus of this cereal are expected to be added to feed grain stocks.

Pennsylvania potato acreage is down slightly. It is too early for yield estimates.

Both acreage and yields of cigar filler tobacco are expected to be the same as last year. This means a production of 52,700,00 pounds from 31,000 acres.

● Chicago Yards

(From page 3)

Slaughter heifers 23 00-23 25, Bulk choice 22 00-25 00 Good 19 75-21 50

Cutter, utility and commercial cows 13.75-16.50 Utility and commercial bulls 17.50-21.00 Few good vealers 22-23.00, Few lots good and choice 850-950 lb feeding steers 22.25-22.50

FARMERS SUPPLY

137 EAST KING ST.

LANCASTER, PA.

Open Daily 8.30 to 5.30 — Friday until 9.00
Open Monday until 12.30 during July and August

MH-30

TOBACCO GROWERS . . .

Eliminate Hand Labor, Stop Suckering Damage

Tobacco Growers — Order Your Needs Now

CERTIFIED RED COAT WHEAT
New Type
Will Be Available On Early Orders

COMPRESSED AIR SPRAYERS
To Apply MH-30
3 1/2 Gal. \$7.88
Reg. \$10.15

FREEZER SUPPLIES

PLASTIC FREEZER BOXES

4—1 Pint Size, Reg. \$1.00 69c
3—1 Quart Size, Reg. \$1.00 79c

WAXED CARDBOARD FREEZER BOXES

25—1 Pint Size, Reg. 79c 55c
25—1 Quart Size, Reg. 98c 66c

FREEZER BAGS

32—4x2x8 Reg. 49c 33c
25—4x2x12, Reg. 49c 33c
11—8x3x15, Reg. 49c 33c

FREEZER TAPE

90 ft. x 1" Reg. Price 98c 77c