

Put a tablespoon of butter and a slice of butter each. Sprinkle with coconut. Bake in a moderate oven (350 degrees) about 15 minutes or until the coconut is browned and the peaches are heated through. Serve with cold custard sauce, topped cream slightly thickened, and angel cake. The peaches may be placed atop the cake with whipped cream as desired.

RANGE CUSTARD SAUCE
 2 eggs or 4 yolks
 1/2 cup sugar
 1/2 teaspoon salt

2 cups milk, scalded
 1 teaspoon vanilla
 Dash of nutmeg if desired
 1/2 teaspoon grated orange rind

Combine slightly beaten eggs, sugar and salt. Stir in about 1/4 of the hot milk. Add this mixture to remaining hot milk in top of double boiler and cook over low heat until mixture thickens and coats the spoon. Chill well. Additional orange rind coarsely grated, may be sprinkled over the top of sauce.

Note: This is a good year round dessert. When fresh

peaches are out of season, use those you've canned or canned peaches from the store. Omit sugar from coconut peach recipe.

Strawberry Sour Cream Freeze is another tasty dairy food and fruit duo. What a delightful blend dairy sour cream and fresh strawberries make in this frosty goody that takes minutes to make; your freezer does the work.

STRAWBERRY SOUR CREAM FREEZE
 1 1/2 cups fresh or frozen strawberries, sweetened
 1/2 cup sugar

1 tablespoon lemon juice
 1 pint (2 cups) dairy sour cream

Thaw strawberries if frozen. Cut and sweeten fresh strawberries. Add sugar, lemon juice, and sour cream and mix well. Pour into a refrigerator tray or in individual molds and freeze. Do not stir. Serve topped with whipped cream if desired.

until mixture boils. Boil for 3 minutes. Remove from heat. Add butter. Color with a few drops of red food coloring. Cool. Stir in the remaining 1 cup raspberries. Serve at once.

Plum Ripple Party Mold is a delicately flavored combination of vanilla ice cream and canned green gage plums that can be made ahead and stored in the freezer for a hostess treat or for unexpected company. This mold is nice served on a high pedestal cake platter; for garnish cluster red berries, when in season, at the center and cool green grapes with a touch of berries along the base.

No dairy food and fruit combination would be complete unless ice cream were included. Here's a recipe using fresh raspberries that is sure to be a summer success with your family.

RASPBERRY SAUCE
 1/2 cup sugar
 1 tablespoon cornstarch
 3/4 cup cold water
 1 cup fresh raspberries
 1 tablespoon butter
 Few drops red food coloring
 1 cup fresh raspberries

Combine sugar and cornstarch in saucepan. Mix well. Blend in water. Stir in one cup raspberries. Cook over low heat, stirring constantly,

PLUM RIPPLE PARTY MOLD
 1 1lb., 13-oz. can green gage plums
 1/8 teaspoon salt
 1 tablespoon cornstarch
 3 drops green food coloring
 1 quart vanilla ice cream
 Drain plums, reserving juice. Pit and sieve plums in low heat, stirring constantly, (Turn to page 8)



MARTIN'S
Agricultural and Crushed
LIMESTONE

IVAN M. MARTIN, Inc.
 BLUE BALL, PA. Telephone: New Holland, ELgin 4-2112
 Terre Hill, Hillcrest 5-3455
 Gap, Hickory 2-4148

PENN SQUARE MUTUAL FUND

Investing in Diversified Securities for INCOME and CAPITAL GAINS Possibilities

**NO BUYING CHARGE
 NO SELLING CHARGE**

Subscriptions Accepted With No Minimum Share Requirements
 Free of Pa. Personal Property Tax in opinion of Legal Counsel
NON-ASSESSABLE

J. L. HAIN & CO.
 451 Penn Square, Reading, Pa. FR 5-4424

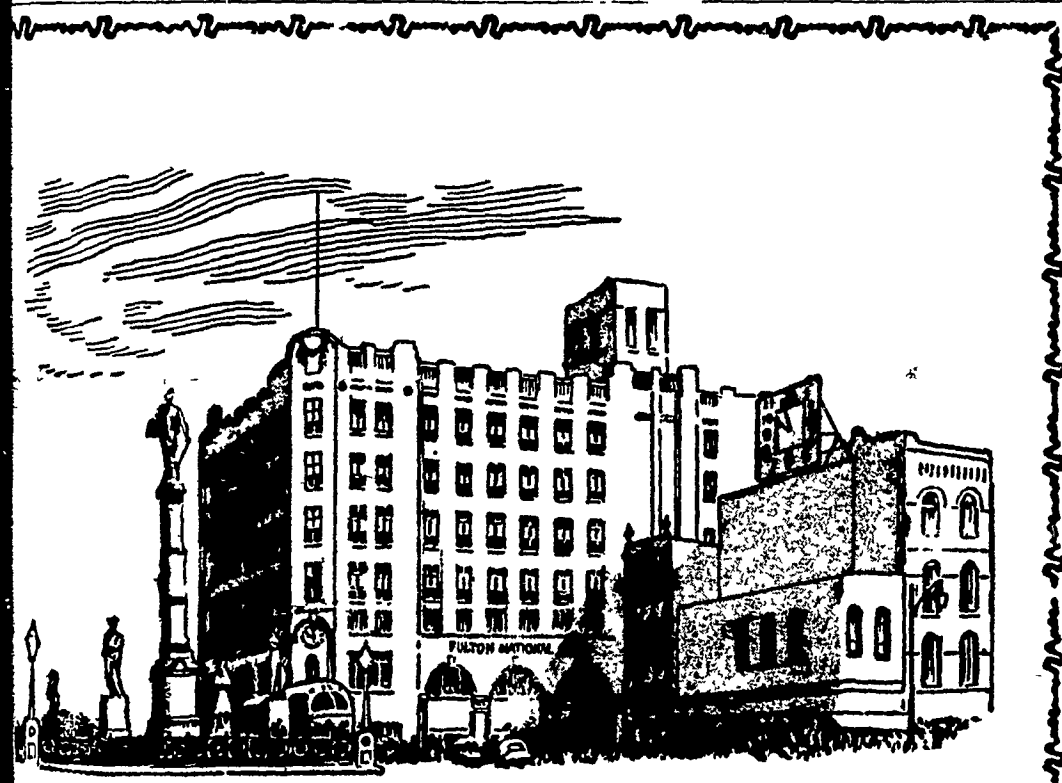
Please send me free information about Penn Square Mutual Fund

Name

Address

City and State

LISTEN TO WCOY-COLUMBIA 1580 ON THE DIAL
 12:05 to 12:10 Daily For accurate up to minute data on stock prices.



For Convenience, For Confidence

For banking at its best, for quick friendly service . . . use The Fulton National Bank. Its sound financial policies and progressive management are specifically designed to give to you . . . the customer . . . a means, whereby your banking transactions can be accomplished with a minimum of effort and a maximum of security. Inquire about the many services your Fulton has to offer, because they are for you. Five conveniently located offices are anxious to serve you. No matter What The Need.



PENN SQUARE * MCGOVERN AVE. * MOUNTVILLE * EAST PETERSBURG * AKRON
 member federal deposit insurance corporation

NEW FEED PRODUCT BOOSTS DAIRY AND CATTLE PRODUCTION, GROWTH RATES

A new feed has been introduced by John W. Eshelman & Sons, manufacturers of Red Rose Feeds, to insure an adequate supply of essential nutrients most likely to be lacking with the usual methods of feeding dairy and beef herds.

For years dairymen have wrestled with the problem of supplying necessary levels of vitamins and energy building nutrients to fit varying qualities of roughages and herd conditions.

The new feed--RED ROSE RUMENATOR--is a specially formulated, pelleted ration that has built into it high levels of stabilized vitamin A, vitamin D2, vitamin E, energy producing ingredients and minerals--to serve as a nutrient-energy booster feed. To further increase its effectiveness, this feed has an unusual appetite appeal even for those animals that for one reason or another sometimes go "off feed".

Results are little short of amazing with this feed. Tests have shown that when Red Rose Rumenator is fed at a rate of five pounds per head per day as a part of the regular ration, milk production improves and dairy cows stay at peak production longer. These two benefits alone have shown substantial profits over feed costs.

In addition, general herd condition has been outstanding. Animals have maintained body weight even in hot weather, hair coats are glossier and all-around appearance of the animals was markedly improved.

Cows fed according to the Red Rose Rumenator program were in better condition for calving, young stock grow faster and take their place in the milking line earlier. With beef animals the response to Rumenator feeding has paralleled that of dairy herds.

AMAZING RESULTS

Researched and tested with the Red Rose Research Center herd and on

Get Red Rose Rumenator from your local Red Rose Distributor.

A. S. Groff
 118 N. Queen, Lancaster, Pa.

Musser's
 The Buck, R. D. 1,
 Quarryville, Pa.

Chas. E. Sauder & Sons
 R. D. 2, East Earl, Pa.

Ammon E. Shelly
 R. D. 2, Lititz, Pa.

E. Musser Heisey
 R. D. 2, Mount Joy, Pa.

J. C. Walker & Co.
 Gap, Pa.