

**Poultry Center**

**Broilers Flop Again**

Broilers were back down near record lows again this week at the Lancaster Poultry Center as 85,075 head in 22 lots sold from 13.3 to 14.2 for a 13.5 average. At the corresponding sale last year 98,975 birds sold at prices ranging from 18.8 to 20.4. At the July 13 auction two lots of 1,450 leghorn fowl brought 10.1 to 10.4 while one lot of 3,700 heavy fowl made 16.3. One lot of males including 350 head so'd for \$0.1 and one lot of 100 turkey hens brought 22.1. Three lots of 4,500 straight run broilers changed hands at 14.6 to 15.1. Six lots of 25,500 broilers were withheld by the growers on bids of 13.5 to 14.2. The complete sale offered 25,175 head in 38 lots and bid 95,175 head in 30 lots. Following is the complete sale with lot number, seller, power in parenthesis, amount and breed, age in weeks and days, buyer and price.

**CODE:** WRF-White Rock fowl, WMT-White Mountain, Indian Rivers, L-F-Y-Leghorn Fowl Yearlings, WVX-White Vantress Cross P-Pullets, C-Cockerels, MWT-Medium White Turkeys, WWSR-White Vantress St. Run.

1 Longenecker's Hatchery, 100 WRF. W. C. Mellinger

**Delmarva - Georgia Resistance To Lower Price**

Delmarva reported live broiler prices averaged about one cent lower during the 24 hour period ending 10.30 on Friday morning. Prices reported at farms on 809,200 head ranged from 12.30 to 13.90. Strong seller resistance was evidenced at the decreased price level but processors reported supplies were ample for current needs. Buying interest for next week's delivery were generally light and at sharply lower values as a reflection of keen competition from southern points estimated slaughter by Eastern Shore processors for the weekend was 752,000 head compared to the 1,025,000 head last week end. The Delmarva broiler-feed ratio for the week ending on July 7 was down one point at 3.0. Broilers averaged 13.99 per pound and mash cost \$93.23 per ton. The ratio for the comparable week last year was 4.4 when broilers brought 20.11 and mash cost \$92.18 per ton.

1. Males, V. J. Koser Co., Inc., 10.1; 2. C. J. Lauer, 8000 W-MT, 9, Meader's Poultry, 13.5; 3. Same, 4800 IR, 9, Meader's Poultry, 13.5; 4. Same, 5. Miller & Bushong, Inc., (David S. Hoover) 7000 JV-1, 9-1, Starr Poultry 13.5; 6. M&B (John McMichael) 2400 WMT, 9, Daniel K. Good 13.4; 7. M&B (Lester McMichael), 1600 WMT, 8-3, D. K. Good, 13.3; 8. M&B (Charles Nissley), 2400 WV, 9, D. K. Good, 13.5; 9. Philhaven Hospital Farm, 100 LFY, V. J. Koser Co., Inc., 10.4; 10. Eli N. Martin, 4000 WV, 9-6, Starr Poultry, 13.6; 11. Garden Spot Broilers (John L. Herr), 2500 WVP, 15-2, NO SALE, 16.0 bid; 12. Neff Brothers, 1275 IR, 10-2, Martin Brendle, 14.5; 13. D. E. Horn & Co. (Howard Taylor) 3000 WV, 9-2, Daniel K. Good, 13.5; 14. Same. (J. S. Peters), 4300 WV, 9, Starr Poultry, 13.4; 15. M&B. (Harold E. Rohrer), 6000 WV, 9-2, Victor E. Weaver Inc., 13.5; 16. Same. H. W. Longacre Inc., 13.5; 17. Same, 4300 IR, 8-6, W. C. Mellinger & Son, 13.5; 18. Same, 4800 WV, 8-6, Roy E. Ream, 13.5; 19. Raymond M. Zimmerman, 5,000 WV, 8-5, NO SALE, 13.5 bid; 20. Same, 8-6, NO SALE, 13.4 bid. 21. Wenger's Mill's, Inc. (on Zimmerman) 1900 WVP, 14-2, NO SALE, 16.5 bid; 22. Miller & Bushong, Inc., (George McCauley), 4,000 WVXC, 8 Crown Poultry, 13.4; 23. M&B, (John E. Erb), 4000 IR, 9, Crown Poultry, 13.5; 24. Same (Ed Wall) (Turn to page 10)

Delmarva reported live broiler prices averaged about one cent lower during the 24 hour period ending 10.30 on Friday morning. Prices reported at farms on 809,200 head ranged from 12.30 to 13.90. Strong seller resistance was evidenced at the decreased price level but processors reported supplies were ample for current needs. Buying interest for next week's delivery were generally light and at sharply lower values as a reflection of keen competition from southern points estimated slaughter by Eastern Shore processors for the weekend was 752,000 head compared to the 1,025,000 head last week end. The Delmarva broiler-feed ratio for the week ending on July 7 was down one point at 3.0. Broilers averaged 13.99 per pound and mash cost \$93.23 per ton. The ratio for the comparable week last year was 4.4 when broilers brought 20.11 and mash cost \$92.18 per ton.

**Lancaster Yards**

(From Page 2)  
18 50-19.25  
Sows: 1-3 mostly 2-3 300-600 lb 12-15.  
SHEEP: 500 compared to 354 head last week Trading active. Spring slaughter lambs steady. Good & Choice 60-90 lb slaughter lambs 16-18.50. Choice and Prime 18.21.00.

Patronize Lancaster Farming Advertisers.

**FOR SALE COMPLETE IRRIGATION SYSTEM**  
4000 ft. aluminum pipe, McDowell couplings.  
**JOSHUA L. STOLTZFUSS**  
East Earl, Pa., R. D. 1

**WHEELHORSE and SIMPLICITY Garden Tractors**  
Snavelly's Farm Service  
NEW HOLLAND EL4-2214

**Weekly New York Egg Mkt.**

From Monday, July 10th to Friday, July 14th

	Mon.	Tues.	Wed.	Thurs.	Fri.
<b>Whites</b>					
Ex. Fcy.					
Hywts	42 -	42 -	41 -	41 -	39 -
Fcy					
Hywts	40 -	40 -	38 -	38 -	35 1/2-
Fcy					
Med.	36 -	36 -	36 -	36 -	35 1/2-
#1 Med	35 -	35 -	35 -	35 -	34 1/2-
Pullets	25 1/2-	24 1/2-	24 1/2-	24 -	24 1/2-25
P-wees	17 -	17 -	17 -	17 -	17 -
<b>Browns</b>					
Ex. Fcy.					
Hywts	43 -	43 -	43 -	43 -	43 -
Fcy					
Hywts	40 -	40 -	40 -	40 -	40 -
Fcy					
Med.	36 -	36 -	36 -	36 -	35 1/2-
Pullets	26 -	25 -	25 -	24 -	24 -
P-wees	17 -	17 -	17 -	17 -	17 -
<b>Mixed</b>					
Fcy.					
Hywts	40 -	39 1/2-	38 -	37 1/2-	35 1/2-
#1 Med	34 -	34 -	34 -	34 -	34 -
Pullets	24 -	23 1/2-	23 1/2-	23 -	23 -
Stds	35 -	35 -	35 -	35 -	34 1/2-
Checks	28 -	28 -	28 -	28 -	28 -

TREND: Market very unsettled and outlook still confused. Top nearby whites still fairly well cleared in most quarters but backing up a bit in others. Medium still well cleared.  
Copyrighted 1960 By Urner-Barry Co.

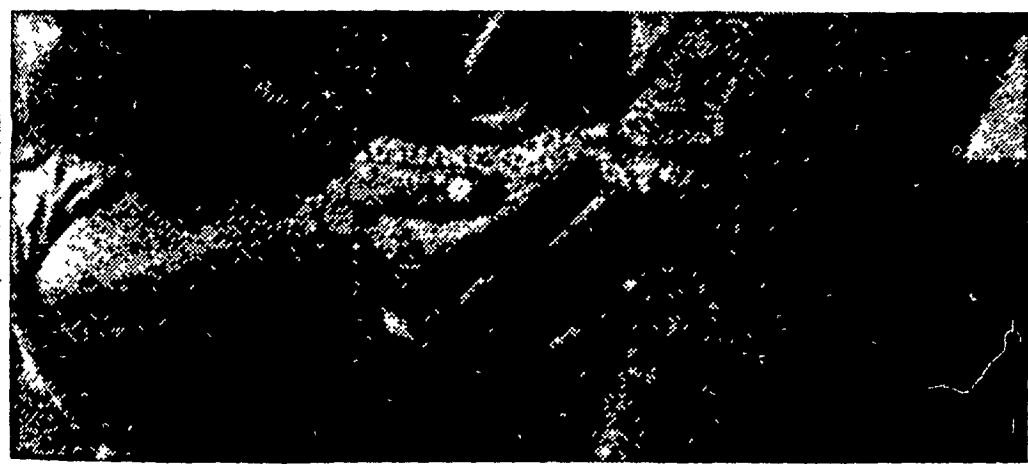
**Bulk Spreading Service**  
Dealers for—  
**FERTILIZER and LIMESTONE**  
**MUCKER BROS.**  
Bird-in-Hand  
Ph. Leola OL 6-2229

**Lancaster Laboratories, Inc.**  
Feeds, Forage, Soil Analyses

Inquiries welcomed in all phases of Agricultural Research, Development and Testing.

2425 New Holland Pike  
Lancaster, Penna.

Phone Leola  
OL 6-9043



**GET CLEAN GRAIN**

**With Non-Explosive—Safe**

**OUTSTANDING  
RELIABLE  
KNOWN**

Use Dow Serafume In

- GRAIN BINS
- GRANARIES
- FLAT STORAGE



**SERAFUME**

Use Dow Serafume On

**ANYONE CAN  
SUMIGATE GRAIN  
EFFECTIVELY AT  
LOW COST  
YOU OWE IT TO YOUR-SELF....**

- WHEAT
- RYE
- OATS
- CORN

**J. C. EHRLICH CHEMICAL CO., Inc.**

736 E. Chestnut St.

Phone EX 7-3721

LANCASTER



**SUPPLEMENT YOUR PASTURE PROGRAM**

by FEEDING

NEW **WIRTHMORE**

**HIGH CALORIE ALL PELLETTED**

**Dairy Feeds**

These feeds are excellent for maintaining body condition and high production.

Available in 14%, 16%, and 18% protein levels.

Try These New High Calorie Formulations For Superior Performance

CONTACT US TODAY

**Wirthmore Bulk Station**

FLORIN, PA.

Ph. Mt. Joy OL 3-0101

**GO BULK AND SAVE**