

109 Counties Are Declared Drought Areas

Secretary of Agriculture Orville L. Freeman took several steps this week to conserve supplies of barley and oats by limiting sales of Commodity Credit Corporation stocks and discontinuing export programs to meet possible needs for livestock feed use in the Northern Great Plains drought area.

The action supplements the designation of 109 counties during the past week in the four-State drought area of Minnesota, Montana, and North and South Dakota as emergency areas for assistance. In most of these counties, eligible producers will be able to obtain Commodity Credit Corporation-owned feed grains at current support prices to provide feed

for their basic livestock herds.

In order to conserve supplies for emergency feeding, the Minneapolis Agricultural Stabilization and Conservation Commodity Office will discontinue all sale of CCC-owned oats stored in that area effective immediately, except for sales under the emergency livestock feed program. Other Commodity Office officers will continue to offer CCC-owned oats for sale at the statutory minimum as announced in the CCC Monthly Sales List for July.

State and County Agricultural Stabilization and Conservation (ASC) Committees in the designated counties in the four-State area will discontinue sales of barley, oats, and corn stored in CCC bins, except for sales under the disaster livestock feed program.

Patronize our advertisers



LIVING FENCE

Borders of grasses and legumes along woodlands benefit birds, animals and insects. Crops grown next to woodland edges also benefit from the added sunlight, moisture. Woodland borders are always a good place to hunt rabbits, and these places should not be overlooked by the pheasant hunter, according to W. Martin Munn, the U S Soil Conservation Service at Lancaster.

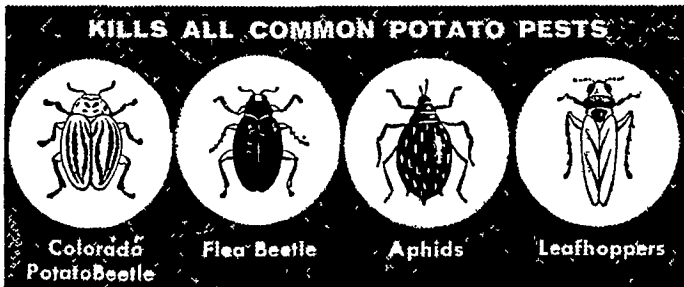
It's important to use fresh cultural engineers Gasolines and should be used that season. Never store gasoline in engines, say agri- are blended to fit the season longer than 90 days

Potato Growers You Need



Thiodan®

The new broad range insecticide



With this important new chemical discovery—Thiodan—you get a multiple kill of several potato pests at the same time. This means one shot control which, of course, is a more economical way to protect your crop.

Thiodan is a concentrate. Just mix with water and apply with ground or air spray equipment. And Thiodan is compatible with all commonly used fungicides. Its effectiveness has been proved over several seasons.

ALSO RECOMMENDED FOR TOBACCO and TOMATOES

Ask About Other

Fine MILLER Products

- "658" Fungicide (Copper-Zinc-Chromate) For Early and Late Blight
- Nutri-Leaf "60" — feeds plants through foliage, a wonderful supplement to ground fertility.

AVAILABLE AT YOUR LOCAL DEALER OR



Miller Chemical & Fertilizer Corporation

P. O. BOX 25, EPHRATA
Phone RE 3-6525

ROHRER'S—

can supply you now with

THIODAN
NUTRI-LEAF - "658" Fungicide

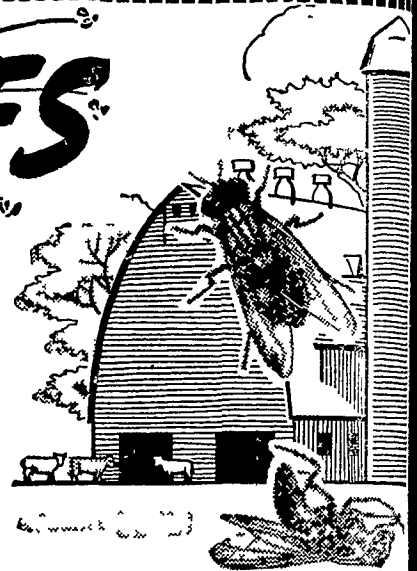
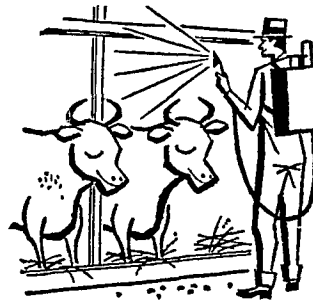
also a complete line of Miller
INSECTICIDES — FUNGICIDES

P. L. ROHRER & BRO., INC.

SMOKETOWN

Phone Lanc. EX 7-3539

KILL FLIES



Use These

FLY KILLERS...

... DIRECTLY ON ANIMALS

- Orho Dairy & Stock Fly Spray
Wet hairs on dairy animals
- Korlan 12 E
* Use with fuel oil 10.1 on back rubbers
- Korlan 25 W. P.
* Use with water 4 lb. in 25 gal as a direct spray
- Marlate 50
Use as a dry rub on dairy animals
* Not on dairy animals

... IN BUILDINGS

- Korlan 12 E
-1:12 for 3-4 week residual
- Diazinon 25 E
1.35 for 3-4 week residual
- Dipterex Bayer L-13/59
As bait dry or wet
- Orho Fly Killer Dry Bait
Just scatter thinly on floor
- Lethalaire Bomb D-200 or V21
Use daily in milkhouses, barns and your home
- Magic Circle Industrial Aerosol Bomb
Use in milkhouses, barns and your home
2½ lb. non-refillable aerosol
- Fly Cakes
Last all season - Use 1 fly cake for each 100 sq. ft.
- Orho Fly Killer D - Contains DIBROM®
Use as a space spray, as a bait and for increased residual fly control

Get Your Supply at These Dealers

Atglen Blend & McGinnis	Hershey Hershey Estates	Parkesburg E. H. Keen & Son
Bareville Martin's Hardware	Kirkwood L. H. Jackson	Quarryville Ross H. Rohrer & Sons
Buck Musser's	Lancaster L. H. Brubaker	Rising Sun, Md. S. H. Montgomery & Sons
Campbelltown A. M. Brandt Sons Hardware	Lancaster County Farm Bureau Weaver's Hardware	Ronks Lester A. Singer
Elizabethtown Elizabethtown Farmers Supply Co., Inc. Kaylor Bros.	Lincoln J. E. Galen Hardware	Schoeneck Brehm & Enck Hardware
Ephrata Martin's Feed Mill C. P. Wenger & Sons	Lititz L. H. Brubaker Eby's Mill Inc	Stevens Snader's Mill
Florin Hess Bros	Manheim Leray Geib Estate N. G. Hershey & Son Robert Hess Store	Strasburg I. B. Graybill & Son
Gap Summers Bros	Oxford Oxford Grain & Hay Co., Inc.	Washington Boro Ament's Hardware
Honeybrook Martin D Kern & Son Hardware		West Willow West Willow Farmers Assn.
		Willow Street Dombach Bros

J. C. EHRLICH CHEMICAL CO., Inc

Distributor

736 - 738 East Chestnut St., Lancaster, Ph. EX 7-3721