

● Crop Summary
(From page 1)

expect to start harvesting the first week in July; a small quantity of red beets is now available; early tomatoes are showing first bloom sweet corn continues to show rapid growth; lima beans in Erie County are nearing the final planting stages; harvest of green peas is active in southern and central counties; and a light volume of early cabbage and lettuce is now available.

Tobacco planting is almost completed with some cultivating taking place. Potatoes are generally in good condition in the south and east.

Fruit is sizing nicely and not much insect damage has been reported. Sour cherries are turning color and a few are being picked in southern counties. Peaches are being thinned in some areas. The first preliminary estimate of the commercial apple crop will be released about July 10th.

Small grains are in good condition, with the exception of oats reported as fair to good. Barley is turning yellow in all sections with some harvesting in the south east. Wheat is in good condition and headed in most of the state.

Corn planting is almost completed throughout the state with the most advanced growth reported in the southern areas at 12 to 14 inches in height.

Hay quality is reported good to fair. Pastures are in average condition and rate of growth is good.

● Japanese Beetles
(From Page 1)

fruits of all kinds, and many other plants.

Penn State extension entomologists believe there'll be a bumper crop of the half-inch long beetles, with coppery-brown wing covers and shiny metallic-green bodies. So, if you want any plants in your backyard garden to

remain intact you'll have to get busy now to protect them from the oncoming beetles.

Summer quarantine regulations, applied by the U. S. Department of Agriculture will go into effect against Japanese beetles as these destructive insects begin emerging from the soil in many areas of the eastern United States.

These measures became effective only when and where Japanese beetle activity makes hazardous the movement of commodities, vehicle or aircraft into beetle-free areas.

The beetle, pest of more than 200 agricultural and ornamental plants, infests about six per cent of the U.S. To protect the other 94 per cent of the country, plant control inspectors of USDA's Agricultural Research Service keep a close watch on beetle infestations, which are normally spotty. Regulatory action is taken when enough beetles appear to warrant it.

Under Federal quarantine

are the District of Columbia and the States of Connecticut, Delaware, Maine, Maryland, Massachusetts, New Hampshire, New Jersey, New York, North Carolina, Ohio, Pennsylvania, Rhode Island, Vermont, Virginia and West Virginia.

Persons wishing to send or carry plants with soil outside regulated areas are urged to consult their local plant quarantine official about proper treatment to make the articles eligible for movement.

Farm real estate taxes totaled \$12 billion in 1959. Tax on personal property on farms was another quarter billion dollars.

● Lindencamp
(From page 7)

DHIA Supervisors here Certificates were awarded by Herbert C. Gilmore, extension dairy specialist, in charge of the DHIA program in Pennsylvania.

Officers elected by the 1959 members of the Association were: Elwood Walters, Beaver Springs, Snyder County, chairman; Arthur Wert, Union County, vice chairman; Donald Hindman, Clarks Summit, Lackawanna County, secretary, and James Fosengrant, Bradford County, vice secretary.

Over the last ten years 58,000 rural residents met death and two million were injured on the highway. Fatal accidents for the decade increased by 26 percent.

Stanley H. Deiter
Auctioneer & Appraiser
LAMPETER
Ph. Lancaster EX 4-1796

HOWDY says
KEEP OUR OUTDOORS
GREEN AND CLEAN



HAVE GOOD OUTDOOR MANNERS

1941—20th Anniversary—1961

SUMMER SALES PROMOTION

Now—Bigger Than Ever!

SAVE—Special Anniversary Prices

MANY—MANY SPECIALS

See Us Today!



Charles B. Hooper

INTERCOURSE PH. SO 8-3501

K-137 KimberCHIKS...



10¢ to 34¢ MORE NET INCOME THAN OTHER MAJOR EGG STRAINS*
(35¢ more than average entry in 15 tests)

*Based on final reports in 1959-60 Random Sample Tests in Ariz., B.C., Calif., Fla., Ia., Minn., Mo., C.N.Y., W.N.Y., N.C., Pa., Tenn., Tex., Utah, and Wisc.

In the three 1959-60 tests in which the new K-155 Kimberchik was entered, it equalled the well-known K-137 in net income.

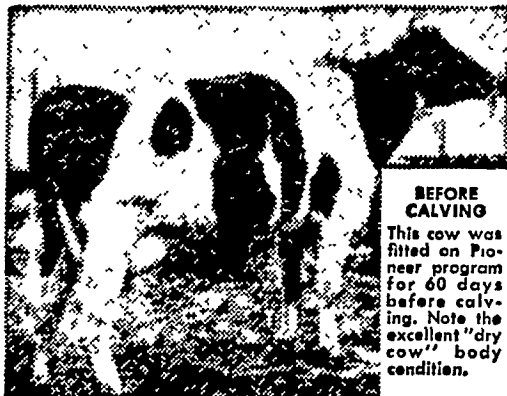
Have us reserve your 1961 Kimber pullets now!

Longenecker's Hatchery

ELIZABETHTOWN, PA.

EMPIRE 1545

600 pounds of PIONEER "DRY AND FRESHENING" yields an EXTRA TON of milk!



AFTER COMPLETING RECORD
The same cow after 60 days produced 22,044 lbs. of milk and 11 1/2 lbs. of fat in 4 years. Note the extreme dairyness and excellent body condition shown after this period of production.

60 DAYS ON PIONEER DRY AND FRESHENING WILL IMPROVE PROFITABILITY OF YOUR HERD

PIONEER DRY AND FRESHENING DELIVERS

- Up to 25% more milk
- Higher breeding efficiency
- Strong, vigorous calves
- Ease in calving
- Quick elimination of placenta
- Less udder congestion
- Better herd health

Calving stimulates a cow to produce fat beyond her ability to convert feed into milk. So, during the first months of her lactation, she "steals" milk-making nutrients from her body.

It requires only 600 pounds of Pioneer Dry and Freshening feed to repair the body tissue used during the previous lactation... to build a reserve of body condition for the next lactation... and to produce a vigorous calf.

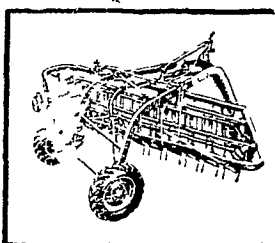
Pioneer Dry and Fresh, fed during the dry period, is a sound investment in herd health, sustained high production, and longevity for your producing herd.



Joseph M. Good & Sons

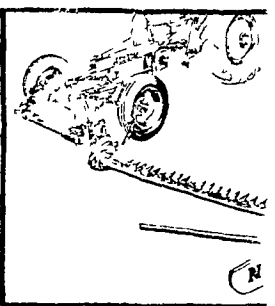
LEOLA - QUARRYVILLE

Make Hay Faster with NEW IDEA hay tools!



Pull-Type Parallel Bar Rake Cuts Raking Time in Half

Get faster raking—and better quality hay—with this new pull-type parallel bar rake from NEW IDEA. Rake moves half the distance... makes uniform, fluffy windrows with minimum leaf shattering. Easy to reach controls. Fits any tractor. Only one daily lube point.



Full Trailing Mower is Quickest On and Off

This famous NEW IDEA mower performs efficiently with any tractor. Trails perfectly—makes square turns. Take your choice of cutter bar lift—PTO power or hydraulic power.

Come in and see them today

CHAS. J. MCCOMSEY & SONS
Factory Hill, Pa.

A. B. C. GROFF
New Holland

LANDIS BROS.
Lancaster

WILBUR H. GRAYBILL
Lititz, R. D. 2

J. PAUL NOLT
Gap

H. S. NEWCOMER & SON
Mount Joy

J. H. REITZ & SON, Inc.
Lititz, R. D. 4

ALLEN H. MATZ
Denver

A. L. HERR & BRO.
Quarryville