

Co-op Mills To Take Over Manheim Plant

Top management of the Pennsylvania Farm Bureau Cooperative's feed mill at Manheim will be assumed by Co-op Mills, Inc. today.

Ownership of the mill and facilities at Manheim will remain in Farm Bureau, General Manager George Conner said.

He explained that Farm Bureau has been a part of the Co-op Mills system for 20 years.

Prior to this time all feed requirements for farmer patrons in Western Pennsylvania have been supplied by the Co-op Mills plant near Cincinnati, while the Manheim plant serves farmers in eastern Pennsylvania, Conner said.

Except for the change in top management personnel, the work force at the Manheim plant will remain the same, it was announced. Co-op mills has management contracts with regional cooperative-owned plants in Delaware, Virginia, North Carolina and Georgia in addition to the ones in Pennsylvania and Ohio.

Committeemen Named To ASC

The Pennsylvania State ASC Committee today announced the appointment of Harry A. Peters of Scotland to the position of State Administrative Officer with headquarters in Harrisburg, Pennsylvania.

In this position, Mr. Peters will have overall responsibility in behalf of the State ASC Committee in the supervision of the State and County ASC Offices.

Mr. Peters has been farming since 1948 and owns and operates a farm which produces apples, peaches, cherries, corn, and alfalfa hay.

with some acreage in pasture. He is a past-president of the Pennsylvania Horticultural Association and a member of the Pennsylvania Horticultural Council. He was also a former chairman of the board of the Franklin County Soil Conservation District. John Kimble, Nottingham, has been appointed farmer-fieldman for the Pennsylvania Agricultural Stabilization and Conservation Committee.

Kimble will serve southeastern Pennsylvania including Lancaster County.

Traffic crashes are the leading cause of accidental death among rural youths under 25 years of age.

New Power Plant Opened

Pennsylvania Power and Light Company's new Brunner Island Steam Electric Station was placed in regular interconnected operation in the Company's system and 150,000 kilowatts of its 300,000 kilowatt rated capacity on Thursday, June 22.

Brunner Island power plant went into trial operation on May 19 and has since been taking a shakedown cruise leading up to the new unit being considered as a regular part of the Company's power producing system.

During this shakedown, the equipment was tested and retested and the unit was operated at partial loads in order that the impurities in the boiler water could be eliminated. Within this shakedown period while the water was being purified, the equipment has been operated at lower than its design pressure of 2,400 pounds per square inch. On May 19 when trial operations started, the pressure was about 500 lbs; it has now been increased to 1,800 pounds. Full pressure and the full rated capacity of 300,000 kilowatts are expected to be attained in the near future. This will bring the utility's total generating capabilities to more than 1,700,000 kilowatts.

Brunner Island power plant occupies a 766-acre tract along the Susquehanna River adjacent to the village of York Haven. The plant represents an investment by the utility of about \$48 million, part of PP&L's gigantic war expansion program which totals \$686 million for the 20-year period ending in 1965.

Urge Drivers - Careful on 4th

A safe and sane Fourth of July holiday was called for yesterday by Keystone Automobile Club in an urgent appeal to motorists everywhere to "play it safe", particularly on the highways.

Many millions of Americans will be planning four days of fun and frolic on automobile trips, picnics and other outings. So, once again, as on every holiday, roads will be clogged to the saturation point.

"The great danger facing the motoring public is obvious and real," declared Edward P. Curran, Safety Director of the Club. "It is greater than ever this year because of the greatly increased number of cars on the roads and because the highways no longer can safely accommodate the tremendous flow of motor vehicles pleasurebound on holidays."

"Carelessness, recklessness and disregard of the rights of others can make the long Fourth of July a black mark on the calendar. The spectre of injury and death will be lessened only if the individual driver accepts his obvious responsibility for the safety of himself and others, curbs impatience and practices courtesy, drives a mechanically perfect car, and observes to the letter every rule of the road for sensible and safe driving."

"Forbidding the sale and use of dangerous fireworks in Fourth of July celebrations was a great forward step in safety. A far greater forward step toward a really safe and sane holiday would be a concerted nationwide effort by every motorist to do his part in avoiding and preventing highway accidents. Playing it safe then indeed would be playing it smart."

Farming is our Nation's biggest industry. It employs 7.1 million workers.



- 24x42' MACHINERY SHED \$1098
- 30x70' LIVESTOCK SHED \$1990
- 46x98' LOAFING SHED \$3998

SHARON'S Modern combination steel and wood farm buildings. Other sizes available.

FOR FURTHER INFORMATION CONTACT

CALEB M. WENGER

R. D. #1 QUARRYVILLE, PA.
Drumore Center KI 8-2116



Keep Milk Production Up!
Spray
KLEEN-KOW
Fly Spray

Biting flies reduce milk production. "KLEEN-KOW" gives 99% knockdown, 99% kill... contains two repellents for extra protection in pasture. Satisfaction guaranteed.

NEW... Rockland FACE FLY Spray Aerosol

Government-approved. Easy application and more effective than last year's wifes.

Let Rockland kill your fly problem.



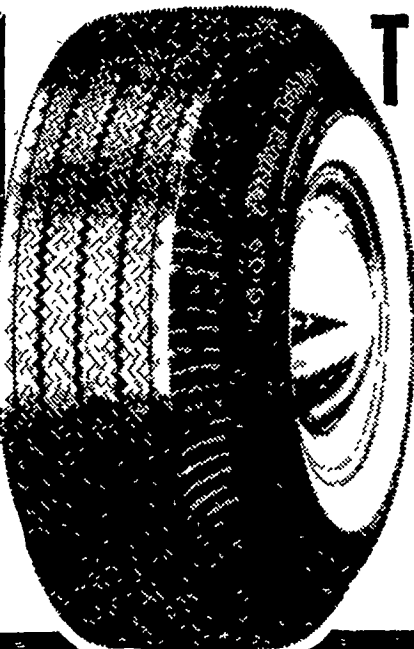
ROCKLAND
CHEMICAL CO.
WEST CALDWELL, N. J.

See your dealer... or write us.

ANNOUNCING: EASTERN STATES

is in the

TIRE BUSINESS



Let Eastern States take the risk and confusion out of your tire purchases. You'll get First-Line CO-OP tires, plus complete service... backed by Eastern States reputation for top value-in-use. Eastern States CO-OP tires for your passenger car, truck or tractor meet the most rigid use and safety tests. Now you can get First-Line tires... CO-OP tires... CO-OP service... and CO-OP savings.

Eastern States FARMERS' EXCHANGE



LANCASTER EX 4-3755

QUARRYVILLE ST 6-3647

OR YOUR LOCAL REPRESENTATIVE



CHERRIES

ARE RIPE

— RED PIE CHERRIES —

PICK THEM YOURSELF — PAY BY THE POUND
BRING YOUR CONTAINERS — WE SUPPLY THE LADDERS
FASTER WEIGHING SERVICE
OPEN EVENINGS — CLOSED SUNDAYS

— NOW PICKING —

SHANK FRUIT FARMS

New Danville Pike

(Pa. Route 324)

R. D. 6, Lancaster, Pa.

Phone EX 7-2703