

## Antibiotics for Bee Diseases

Antibiotics are being used to protect honeybees — key workers in the \$50 million honey and beeswax industry — from attacks of disease, report from the Agricultural Research Center, Beltsville, Md said this week. Honey bees are susceptible

to disease, the same as plants and animals. But because bees live and work together in close-knit communities, disease troubles are often intensified.

Bee diseases have been studied for many years. Arisotle published an excellent description of American foulbrood. (The name wasn't the same but the disease was.) Virgil prescribed a treatment (Turn to page 11)

## For Premier Service

CALL...

JIM FUNK, Quarryville  
ST 6-3271

TED LEHMAN, Lancaster  
EX 4-4929

ROY SPANGLER,  
Washington Boro  
MU 4-8599

AUTHORIZED SALESMEN FOR

## PREMIER FEEDS

Your friendly Premier Salesman is well qualified to help you with your problems. See him today. Let him explain Premier's custom-built programs designed to get the most out of every feed dollar.

PREMIER is the Feed . . . QUALITY is the Reason!

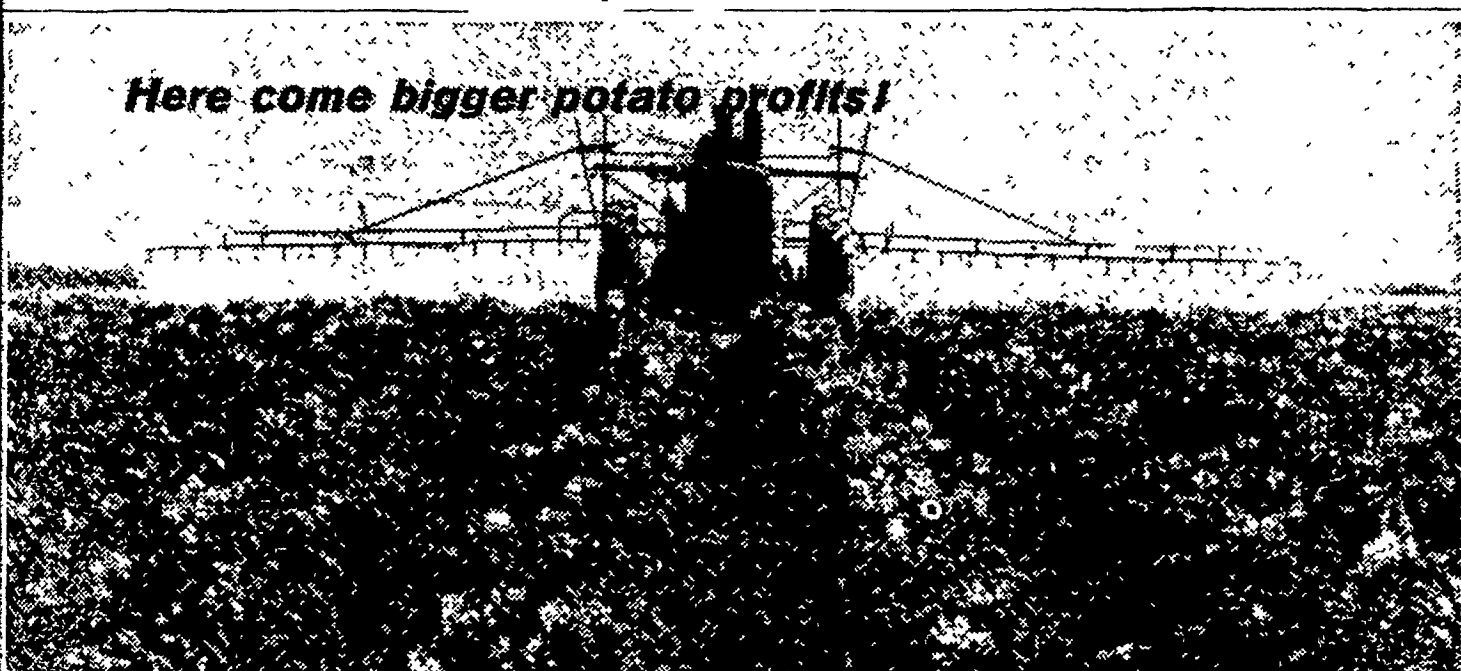
**HESPENHEIDE and THOMPSON, Inc.**  
YORK, PENNSYLVANIA



**PRETTY BONNIE SUE HOUGHTALING**, 1961 American Dairy Princess, appropriately toasts June Dairy Month with a glass of milk. Eighteen year old Bonnie is a freshman at Iowa State University majoring in Home Economics. She was selected from the 32 state dairy princess finalists as "First Lady" of dairy farmers last October. In representing the nation's dairymen, she will travel over 100,000 miles during the year on behalf of milk and milk products. Bonnie is five feet four inches tall, weighs 123 pounds, has light brown hair and blue eyes. Her parents Mr. and Mrs. Mad Houghtaling, operate a 210 acre farm where they have a herd of 35 purebred Holstein cattle.

Buy Your **MANZATE**® through  
**EASTERN STATES FARMERS' EXCHANGE**  
Available in All Lancaster County Communities

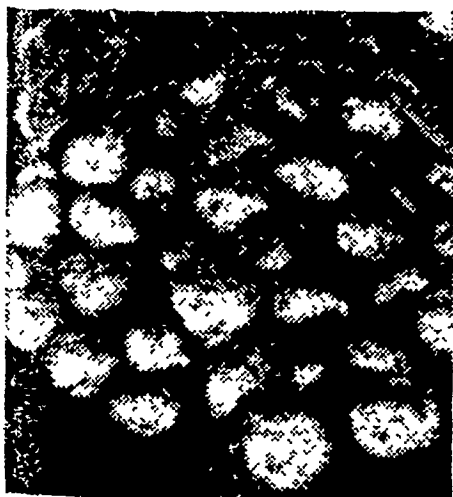
**CHAIN SAW SERVICE CENTER**  
New & Used  
Snavelly's Farm Service  
NEW HOLLAND EL 4-2214



Here come bigger potato profits!

When sprayed on your potatoes, "Manzate" clings to leaves, resists washing off. You get long-lasting protection against blight.

**Spray Du Pont Manzate® to control blights**  
maneb fungicide  
**... assure top yields of No. 1's**



Each acre you spray with "Manzate" can yield bushels more of #1's like these. Field applications of "Manzate" protect your crops from late blight tuber rot, too.

**One-chemical blight control**—a spray program with "Manzate" maneb fungicide controls both early and late blights.

**Better yields, quality and profits**—"Manzate" helps boost yields as much as 40 bushels per acre . . . gives you more #1's, and naturally increases profits, as proved by growers in all major producing areas.

**Safe to use**—"Manzate" is tough on disease, mild on plants. It can be used on potatoes right up to harvest time. . . won't stunt plant growth.

**Saves time and money**—"Manzate" is a wettable powder, ready to mix wherever there's water. It is compatible with most insecticides and fertilizers so you save money with efficient combination sprays.

**Saves trouble**—"Manzate" has been thoroughly proved over the years—you know you can depend on it for top disease control, easy handling.

On all chemicals, follow labeling instructions and warnings carefully.



BETTER THINGS FOR BETTER LIVING  
... THROUGH CHEMISTRY

**MANZATE**

maneb fungicide

### Ag Teacher

(From page 1)

the vocational agriculture curriculum. After high school he was employed by the L. H. Brubaker Farm Machinery firm.

Hess received his bachelor of science degree in Agriculture Education at the Pennsylvania State University after completing his student teaching assignment in 1960 at the Lampeter-Strasburg High School.

Desiring to return to the county, Hess again returned to the Brubaker firm where he is now employed. He begins his duties at the Elizabethtown School July 1.

Advertisers will be glad to have you mention Lancaster Farming when answering advertisements.

## ISOTOX



**Transplanter Solution**  
(contains Lindane)

- use against wireworms and other soil insects.
- saves re-setting
- increases crop yields
- allows roots to develop and plants to become established
- mixes readily with water
- a true Colloidal Suspension, not an oil base emulsion.

**ORTHO-GRO STARTER SOLUTION** can be Combined with **ISOTOX TRANSPLANTER SOLUTION** to give plants that extra "push" they need to start.

**P. L. ROHRER & BRO., INC.**

SMOKETOWN, PA.

Lanc. EX 7-3539

**MANZATE and OTHER DUPONT PRODUCTS**

Distributed by

**J. C. EHRlich CHEMICAL CO., Inc.**

736 East Chestnut Street

Phone EX 7-7221

Lancaster, Penna.