

Best Food Buys

Warm Weather Brings Food Colors

Warmer weather brings new color and variety to the produce counters of local foodmarkets, observes Tom Piper, Penn. State Extension Marketing Agent. Locally grown strawberries are coming to market this week; this colorful red delicacy will appear beside early shipments of apricots, plums and Bing cherries from California, peaches from Georgia and blueberries from the Carolinas.

Grapefruit supplies are ample and quality is good, particularly on the small size.

ed fruit from the Indian River section of Florida. Lemons are showing improved quality at unchanged market prices. Limes are in short supply and prices are high. Small Valencia oranges from California are noted in good quality and at reasonable prices.

In addition to strawberries and grapefruit, good buys in fruit this week will include bananas, pineapples and watermelons. Cantaloupe supplies are increasing and lower prices will be noted on this item.

Cool, rainy weather of recent weeks is now showing results in the form of supply shortages and higher prices at vegetable counters. Florida supplies are running out and poor growing conditions has retarded crop maturity (Turn to page 11)

● **Oranges**

(From page 9)

coanut
1 orange, sectioned
Cream together butter, shortening, sugar & orange rind. Add eggs, one at a time, beating well after each addition. Sift dry ingredients together. Beginning and ending with flour mixture, add alternately to creamed mixture, with orange juice. Turn batter into 2 greased and lined 9-inch round cake pans. Bake in a moderate oven (350 degrees) 5 minutes. Cool. Fill layers with Orange Filling and frost top and sides with Seven-Minute Frosting. Sprinkle top and sides with cocoanut. Place orange sections pinwheel fashion in center of cake.

ORANGE FILLING

½ cup sugar
3 tablespoons flour
1 cup orange juice
2 egg yolks
2 tablespoons butter
Mix sugar and flour in a saucpan. Add orange juice and egg yolks. Place over medium heat and bring to a boil, stirring constantly. Cook one minute. Add butter and stir well. Cool before using.

Farm Women 6 Make Donation

Society of Farm Women number six voted to donate \$50 to the Agriculture Center at the June 3 meeting of the group.

Meeting at the home of the Misses Leta and Stella Coble, the society heard Mrs. Norma DeLellis, associate County Home Economics Agent speak on ways to improve household storage.

Mrs. Willis Hackman served as hostess along with the Misses Coble. Devotions were in charge of Miss Leta Coble. Society number five and number six have recently visited the 258 guests at the County Home and gave a gift to each guest.

After an auction held by the president, Mrs. Keener, refreshments were served to 40 members and friends by the hostesses.

GOOD PROFITS start with GOOD FEEDING

This Summer use these feeds:

Red Rose® DAIRY FEEDS

Red Rose Fitting Ration

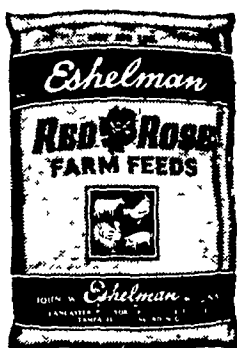
(12% protein) It's ideal for cows with good roughage and pasture, for cows during dry periods and for young stock and bulls.

S-O-S—Replaces hay, ensilage or pasture. Is succulent, palatable and bulky; absorbs water readily and contains more digestible nutrients than wheat feeds. Can be mixed with home-grown grains, too.

RED ROSE RUMENATOR—This ration is an excellent booster feed or appetizer for dairy and beef animals of all ages. It supplies high levels of available energy and "vitamin lift" to keep herds in top condition. Red Rose Rumenator improves appetites and increases milk production. Try it!

Buy Red Rose Feeds From These Distributors

- | | |
|--|--|
| SNADER'S MILL
R. D. 1, Stevens, Pa. | I. B. GRAYBILL & SON
Refton, Pa. |
| LEROY GEIB, EST.
R. D. 2, Manheim, Pa. | WALTER & JACKSON, INC.
Christiana, Pa. |
| MOUNTVILLE FEED SERVICE
R. D. 2, Columbia, Pa. | JOSEPH M. GOOD & SONS
137 Newport Road, Leola, Pa. |

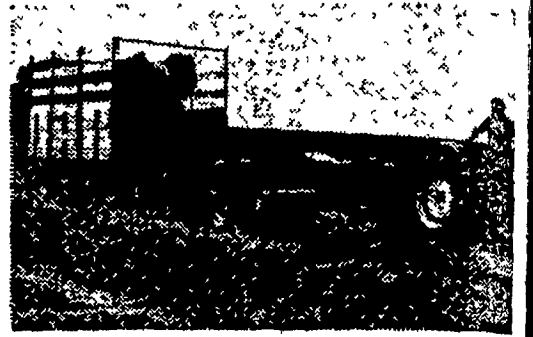


RED ROSE 32% DAIRY SUPPLEMENT
fits perfectly into a feeding program with your supply of home-grown grains to make dependable, economical rations.

BALE TWICE AS FAST WITH HALF THE LABOR!

Today there's a new way to bale—that lets one man bale and load faster than a 2- or 3-man team! The new system consists of a New Holland Hayliner plus a simple, foolproof mechanism that "airlifts" the bales into a trailing wagon.

It costs surprisingly little. In fact, the lowest priced Hayliner—the new Compact Hayliner 65 with Tele-Flow feed—costs no more with Bale-Thrower than many balers without automatic wagon loading! You get the job done in half the time—all by yourself! See us about a demonstration today.



RAKES "WHISTLE-CLEAN" ANYWHERE!

From New Holland—the advanced Model 56 Rolabar Rake! Its cleaner raking action puts more hay... more dollars... into the windrow. Saves nutrient-rich leaves and blossoms, to cut feed supplement costs. Check these big exclusives:

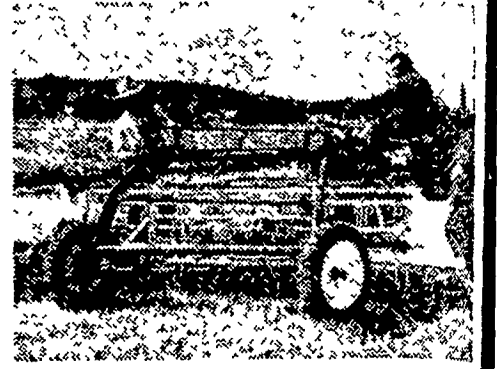
New offset wheels, "floating" basket give cleaner, smoother raking; prevent tooth breakage.

100-acre lubrication makes lubricating a once-a-season job for many farmers—instead of a daily one.

Patented spring-loaded jack for fast, easy hitching.

Patented tooth adjustment. Tines are individually replaceable.

See the "56" here today... test it on your farm tomorrow!



PICK YOUR WAY TO SAVE A HAYING DAY!

Cramp it or crush it... New Holland offers you a choice! Either way, you can save up to 50% in curing time with New Holland conditioners. Humid area or dry—it makes no difference. Conditioning helps you cure hay faster, more evenly. You get better hay, too... richer in the proteins that mean bigger profits for you.

That's because New Holland conditioners—"104" crusher (shown) and "401" crimper—preserve precious feed value, give you dependable performance when every moment counts!

Ask us for a free demonstration now!



MAKE BALE HANDLING A ONE-MAN JOB!

New Holland's Model 131 Bale Carrier Cuts Labor Costs 50% to 75%!

New Holland's low-cost 131 Bale Carrier ends the backbreaking job of manhandling bales for storage. With the "131", you alone can random-stack over twice as much hay as you used to store in a day!

The "131" goes together easily. Start with the base unit, then hook on 8-foot or 4-foot sections to custom-fit your exact needs—all the way up to a 98-foot carrier—in the barn, in a shed, or outside!

COME IN and see New Holland's amazing 131 Bale Carrier—TODAY!



MASTER CROP MOISTURE!

Dry Your Crops Overnight With New Holland's 750 Dryer!

End leaching and bleaching with a Model 750 Crop Dryer from New Holland! The "750" boosts hay quality, cuts feed costs! Just flick a switch, dial your heat, and let science dry your hay or grain!

Dry air sweeps through New Holland's Model 776 Crop Drying Wagon, picking up moisture throughout the entire load. Rugged corrugated sides are bolted for flexibility, are sectionalized for convenience.

See us today for all the facts about New Holland's 750 Dryer and 776 Drying Wagon.



This Model 750 Dryer also highly recommended for drying tobacco, grain and ear corn

- Below are listed a few Lancaster County farmers that are using New Holland Dryers to dry tobacco, grain and corn
- | | | |
|--|---|--|
| WALTER CASSEL
R. D., MANHEIM | J. MOWERY FREY
R. D., WILLOW STREET | CLARENCE KEENER
R. D., MANHEIM |
| ELLIS MENTZER
R. D., NEW HOLLAND | JOHN RANCK
R. D., NEW HOLLAND | |

— DEALERS —

- | | | |
|---|--|--|
| L. H. Brubaker
LANCASTER | D. L. Diem & Sons
LITITZ | J. B. Hostetter & Sons
MOUNT JOY |
| Cope & Weaver
WILLOW STREET | A. B. C. Groff
NEW HOLLAND | Kauffman Bros.
MOUNTVILLE |
| C. W. Wiley & Son
QUARRYVILLE | Arthur S. Young Co.
KINZERS | |

