

● Jay Landis  
(From page 6)

every day. With about 50 acres in woodland and pasture, Landis has a plentiful supply of grass for all his cows and larger heifers except during the hottest and driest part of the summer. To supplement his permanent pastures he plants sudan grass for pasture during July and August.

"My cows begin freshening about August," Landis says, "And I keep the dry cows and young stock on the permanent pastures while the milking herd is on the temporary pasture." That way he does not need a large amount of Sudan grass.

Last fall Landis had 15 cows to freshen with 14 heifer calves. These calves are

kept in a lot near the barn where they can get some grass but not much. They are fed hay and grain daily.

The milking herd is fed grain according to production, but not according to a hard and fast formula, Landis says. If you feed at a one to three or a one to four ratio some cows will get as fat as a pig and others will stay as thin as a rail, he said. You have to know your cows and keep watching them, he believes.

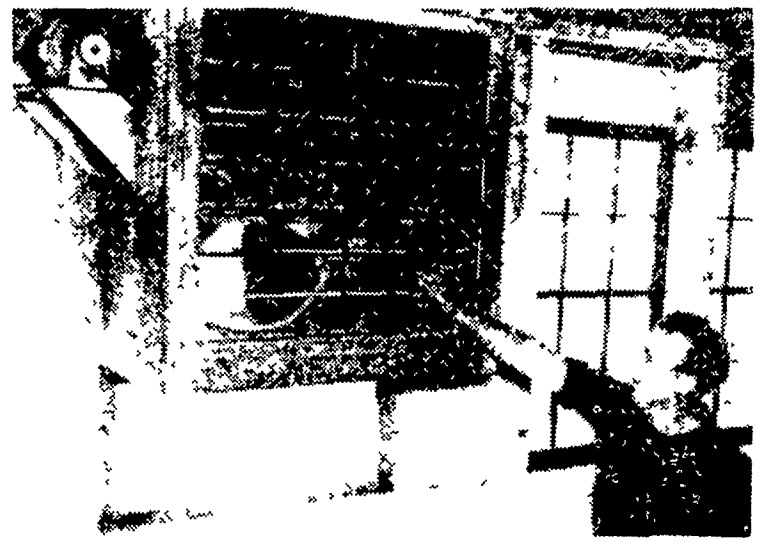
But he knows you can be fooled by just looking at a cow and her production. He believes his DHIA records have helped his herd average rise from 432 lbs to 517 pounds per cow last year.

There are a lot of things which have helped cause the increase, he believes. Better

cows, better hay, better management practices have all gone into the increase. "I was a cow tester myself," Landis says, "And I know the first few months in the association, the farmer is a little bit lax about keeping breeding dates and other records up to date." But when the farmer knows the tester will be asking for those records, he is a little more accurate, Landis believes.

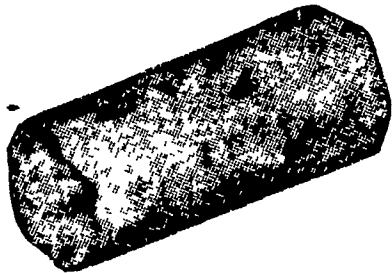
In analyzing the herd he believes the DHIA life history sheet is more important than most farmers realize. You can pick out a life history sheet and see what a cow has done all her life, he says. Her life history is important in deciding how to build the future herd.

The future herd on the Jay Landis farm should be a source of pride to the presi-



A TOP QUALITY PRODUCT is the goal of Jay Landis, president of the Red Rose Dairy Herd Improvement Association. He believes this fan in his dairy barn helps keep the quality of the milk produced here as high as possible. He also gives credit to the bulk tank for helping keep quality high. —L. F. Photo

# DRINK MORE MILK!



**FEED:** Completely Pelleted Dairy Rations From Miller & Bushong.

**Efficient:** Each pellet contains a full feed formula and will give maximum production.

**Economical:** Designed for handling in bulk. Reduces feeding time in milking parlors. No waste. Eliminates dust or fines. Saves labor in handling and feeding.

**Choose:** Green Pastures 16% or Dry and Freshening Ration completely pelleted for economy, efficiency and convenience.



**Miller & Bushong, Inc.**

Rohrerstown, Pa.

Ph. Lancaster EX 2-2145

"Finest Service Anywhere"

dent of the DHIA. The 14 Landis for the past seven heifers are uniform and growthy, and they reflect the care and devotion of a conscientious dairyman.

The farmstead should be a source of pride to the farm owner, Ben Nolt, the Bridgeport garage owner, who has rented the farm to

Jay E Landis is a good example for the membership of Red Rose DHIA to point with pride.

for **BIGGER YIELDS** of **BETTER CORN**

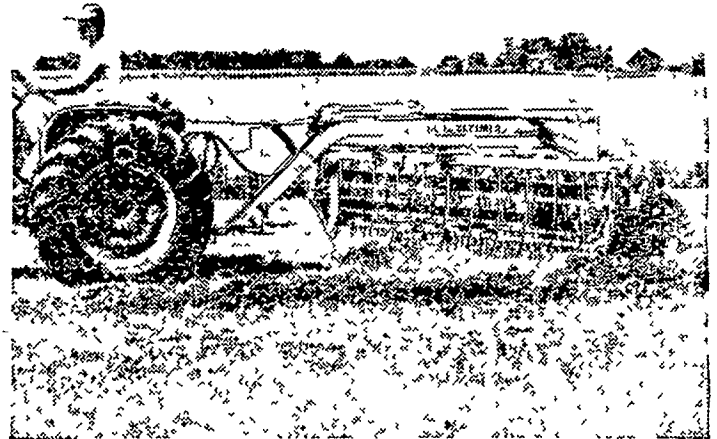
**FUNK'S HYBRID**

And for better fields of Alfalfa, Clover, Oats, Hay and Pasture

**Hoffman Seeds**  
Serving farmers with finest quality seeds since 1899

A. H. HOFFMAN SEEDS, INC., Landisville, Penna.

**NEW GROUND DRIVE RAKE**



*fluffs hay into windrows*

Build fast-curing windrows behind any tractor with the new 77G ground drive rake built by Allis-Chalmers. Parallel-bar raking action moves hay shorter distance, saves leaves because reel speed is right, regardless of travel speed.

Come in and let us show you the new No. 77G along with the rear mounted PTO Model 77M for Allis-Chalmers tractors, and the trail-type No. 7 rake and tedder for all tractor makes.

Ask us about the Allis-Chalmers plan to finance your time purchase of farm equipment.

**ALLIS-CHALMERS** SALES & SERVICE

Mann & Grumelli Farm Serv. R. S. Weaver  
Quarryville, Pa. Stevens, Pa.

L. H. Brubaker Nissley Farm Service  
Lititz, Pa. Washington Boro, Pa.

N. G. Myers & Son L. H. Brubaker  
Rheems, Pa. Lancaster, Pa.

Snaveley's Farm Service  
New Holland, Pa.