

**● Cows Arrive**  
(From page 16)

been paid to her capacity for accomplishing good, as in this expression of confidence in her power to change even the wild nature of the Indian by the softening influence of her presence. A more notable instance of benign faith is not recorded in the annals of the Colony."

The idea, Bruce explains, was that the Indians would become herdsmen and that milking cows would settle them down. It didn't work, however, because the Indian showed little interest in milking cows and neglected them, but the incident still shows the faith which the

colonists themselves had in cows.

In time, the cows became much more valuable to America than gold or silver, the dream of which glinted in the eyes of the first immigrants. While precious metals have their use as wealth, their value depends upon the true wealth of men. This true wealth is found in the cultivation of crops, livestock husbandry and the manufacture of goods useful in human enterprises.

What the English colonists experienced in Virginia was, of course, also common among the Pilgrims who landed at Plymouth in 1620. That colony underwent the tortures of insufficient food,

hostile surroundings and all the rest of the discouraging things that happened to the Jamestown pioneers. Cows were brought to the Plymouth colony in 1624 and became a part of the permanent agriculture there.

The realization that livestock were an essential part in building new colonies came fairly soon, although it had cost the lives of many people to learn the lesson. Not only did the companies and governments sending out the colonists begin to insist that cows must be included in provisions, but it also became the general practice to establish a common pasture in each settlement, a place reserved for the family cows of the settlement to graze. Perhaps the most famous of all these areas originally set aside for pasture is Boston Common which today is a great park in that city which began as a tract of land reserved for grazing cows.

**Cows Follow The Covered Wagons**

Bruce reports that there were milking cow herds of 100 head or more during the 17th century in Virginia, but, for almost two centuries in this country, supplying milk and milk products directly to the consumer was largely a family enterprise.

In the past years there have been many important developments in the American dairy industry. These include improvements on old ideas and some completely new ideas. Containers are of both glass and paper and come in many different sizes and shapes. Homogenization of milk wherein the fat

globules are broken down so that they remain mixed with all the milk; instead of rising to the top of the container, was developed. Vitamin D is regularly added to milk.

The industry that has grown up since the first butter and cheese were imported into this country some 350 years ago is today one of the most important in this country.

**● Pets**

(From page 1)

But many non-hunters who own dogs or cats apparently do not realize the importance of restricting the activities of their animals during the

nesting season. An appeal directed to these people to keep their pets under close control, night and day throughout the coming weeks, until young birds and animals learn the ways of the wild life world and more likely survive.

Advertisers will be glad to have you mention Lancaster Farming when answering advertisements.

**Stanley H. Deiter**

Auctioneer & Appraiser

LAMPETER

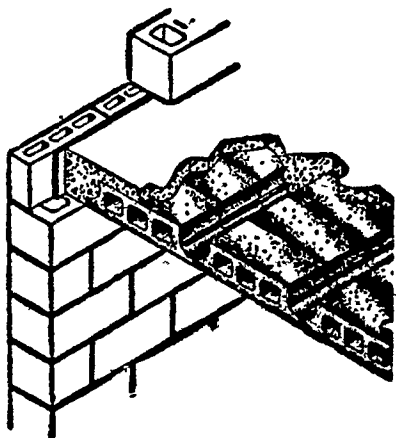
Ph. Lancaster EX 4-1798

**COSTS LESS THAN \$1.00 Per Square Foot**

(FARM CONSTRUCTION—UNDER AVERAGE CONDITIONS)

**SOFFIT BLOCK FLOORS**

- Low Cost
- Fire - Safe
- Savings from low upkeep cost and low fire insurance rates
- Capable of carrying great loads
- Longer life than many other types of construction



**KURTZ BROS. CONCRETE, Inc.**

EPHRATA, PA.

Ephrata RE 3-1231

Denver AN 7-2197

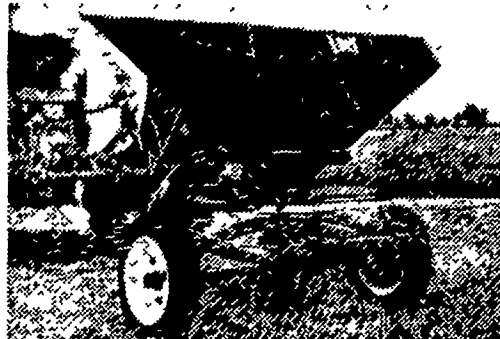


**WHEELHORSE and SIMPLICITY**

Garden Tractors

Snavely's Farm Service  
1EW HOLLAND EL4-2214

**WE HAVE THE ANSWER TO YOUR SPREADING PROBLEMS**



**THE LELY PRECISION FERTILIZER DISTRIBUTOR AND SEEDER**

LELY spreads fertilizer or lime, sows all types of farm seeds, large or small, including Brome grass. Applies pelletized insecticides and herbicides.

**Invest in a LELY for Quick Returns!**

It does so many things so well. Width of spread up to 50 feet. Uniform spread for better crops. Pattern is adjustable too—side or rear. Positive agitator for lumpy or wet materials. Cleans in a jiffy. Trouble-free for years of rugged service. Hopper capacity up to 1000 pounds.

Three models available—Tow type, ground-driven as illustrated, 3-point hitch and Tow type, P.T.O. driven.

**Every modern farmer needs a LELY**

Ask for a demonstration

**L. H. BRUBAKER**

350 STRASBURG PIKE

LANCASTER

R. D. 3, LITITZ, PA.

Phone Lanc. EX 7-5179

Strasburg OV 7-8002

Lititz MA 6-7766

**600 pounds of PIONEER "DRY AND FRESHENING" yields an EXTRA TON of milk!**



**BEFORE CALVING**  
This cow was fitted on Pioneer program for 60 days before calving. Note the excellent "dry cow" body condition.



**AFTER COMPLETING RECORD**

The same cow after having produced 220 044 lbs of milk and 141 lbs of fat in 4 year old. Note the extra frame dairyness and exceptional body condition shown after this cow produced 11 1/2 tons of milk.

**60 DAYS ON PIONEER DRY AND FRESHENING WILL IMPROVE PROFITABILITY OF YOUR HERD**

**PIONEER DRY AND FRESHENING DELIVERS**

- Up to 25% more milk
- Higher breeding efficiency
- Strong, vigorous calves
- Ease in calving
- Quick elimination of placenta
- Less udder congestion
- Better herd health

Calving stimulates a cow to produce fat beyond her ability to convert feed into milk. So, during the first months of her lactation, she "steals" milk-making nutrients from her body.

It requires only 600 pounds of Pioneer Dry and Freshening feed to repair the body tissue used during the previous lactation... to build a reserve of body condition for the next lactation... and to produce a vigorous calf.

Pioneer Dry and Fresh, fed during the dry period, is a sound investment in herd health, sustained high production, and longevity for your producing herd.



**Joseph M. Good & Sons**

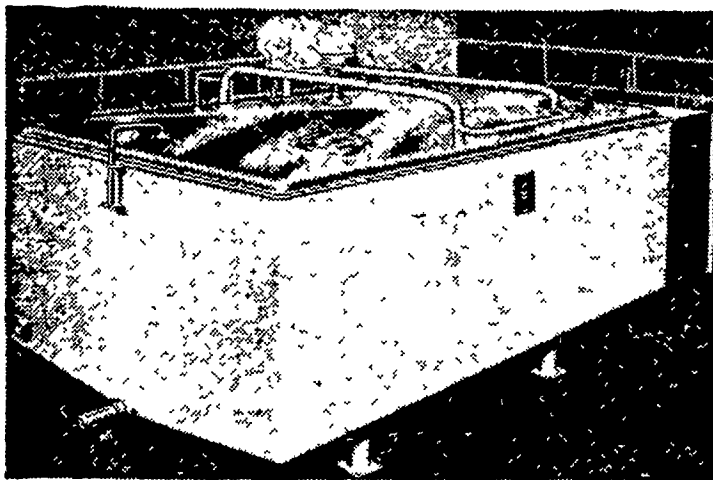
LEOLA - QUARRYVILLE

**CLARK ELECTRIC**

is your headquarters for

**GIRTON FARM TANKS**

SEE—COMPARE—BUY  
GIRTON DELUXE 1-PIECE COVER MODEL



Available in sizes 100 gallon through 1500 gallon.

- They're built to last. Heavy steel framework sealed in air tight, rust resistant, moisture free chamber.
- You get more for your dollar. Gallon for gallon of capacity, it's your best buy.
- Fast, economical direct-cooling.
- Completely automatic operation.
- Built low—only 34" from floor to strainer opening.
- Sanitary stainless steel outlet valve.
- Vermin-proof covers keep milk clean.

WE INVITE YOUR INQUIRIES.

R. D. 1, KINZERS

Phone Intercourse SO 8-8501



Let our factory-trained representatives show you why dairymen everywhere choose Girton over ordinary farm tanks.