

Lanc. Poultry Center

Broilers Down To 14.2c

Broiler prices, in the dollars for several weeks were down another cent this week at the Lancaster Poultry Center. At the May 25 auction 48,700 broilers in 14 lots crossed the block at prices of 14.1 to 15.8 for an average of 14.26. Over three quarters of the sales were at 14.1. The previous week's sale average was 15.2.

Six lots of pullets brought 23 to 23 for the 5,400 head while 6,700 roasters in five lots brought 21.4 to 23. Two lots of leghorn fowl sold for 17 cents per pound for the 900 head.

The complete sale offered 521 head in 33 lots and sold 65,075 head in 28 lots. Three lots of broilers were sold at a bid of 13.5 and one lot bid to 14 was not sold.

Following is the complete sale with lot number, seller, grower in parenthesis, amount and breed, age in weeks and days, buyer and price. CODE WV - white vantage; C - cockerels; P - pullets; X - cross; IR - indian roasters; HSWC - hubbard silver white cockerels; LF - leghorn fowl; Y - yearlings; RF - white rock fowl. 1 D E Horn & Co (Robert Godfrey), 5000 WV, 9-2, by E Ream, 14.5; 2 M&B (Lee Reinecker), 5000 WV,

9, Daniel K. Good, 14.1; 3, Charles G. Myer, 2200 LF, 2 yrs., V. J. Koser Co. Inc. 11.7; 4, M&B (Kenneth M. Funk), 500 HSWC, 13, Carl B. Risser, 23; 5, Richard Wintefs, 1200 WVP, 14, W. C. Mellinger & Son, 22.9.

6, M&B (Moses Zimmerman), 1000 WVP, 13-3, Carl B. Risser, 23; 7, Edwin L. Funck, 3700 WV, 9, Daniel K. Good, 14.1; 8, Same, 4100 WV, 9, Starr Poultry, 14.1; 9, M&B (Lester Shirk), 53-00 WV, 8-2, Starr Poultry, 14.1; 10, M&B (Richard Blessing), 3000 WV, 8-2, Starr Poultry, 14.1.

11, M&B (Elvin Siegrist), 1800 WV, 8-6, John N. Thomas, 14.4; 12, Lester S. Wenger, 375 WV, 12-1, Carl B. Risser, 22.1; 13, J. W. Eshelman & Sons (Red Rose Research Center), 1700 LFY, V. J. Koser Co. Inc., 11.7; 14, Kenneth B. Noll, 1400 WV, 9-2, Carl B. Risser, 15.8; 15, Same, John N. Thomas 15.1.

16, Wenger's Mills, Inc. (Vernon Zimmerman), 875 WVC, 13-2, Daniel K. Good, 21.4; 17, David K. Burkholder, 1700 WVX, 9, Daniel K. Good 14.1; 18, M&B (James Pinkerton) 3400 WV 8.6, Daniel K. Good, 14.1; 19, M&B (Elmer Garber), 6600 IR, 9-1, Daniel K. Good, 14.1 (Turn to page 14)

Delmarva - Georgia Prices Average Half Cent Lower

Delmarva reported prices of 13.10 to 13.90 on 845,200 head at farms during the 24-hour period ending 10.30 on Friday morning.

Live prices averaged approximately 1/2 cent lower. Offerings were ample but sizes were irregular. Estimated slaughter for the weekend was 900,000 head compares to the 677,000 head last weekend.

The Delmarva broiler-feed ratio for the week ending on May 19 was down two points from the previous week at 3-1. Broilers averaged 15.01 per pound and mash cost \$95.80 per ton. During the same week a year ago the ratio was 4-0 when broilers averaged 18.27 and mash cost \$91.96.

Fluid Milk Production Nears Peak

Production of fluid milk in the northeast was reported at or rapidly moving to the usual peak. Bottling demand was mostly slightly lighter and heavy diversions reported to manufacturing outlets.

Separating and powder operations were reported near capacity in many quarters. In the southeast production

Weekly New York Egg Mkt.

From Monday, May 22nd to Friday, May 26th

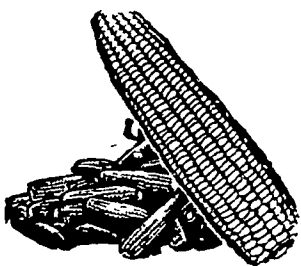
	Mon.	Tues.	Wed.	Thurs.	Fri.
<b>Whites</b>					
Ex. Fcy.					
Hywts	31 1/2-	31 1/2-	31 1/2-	31 1/2-	32 1/2-
Fcy					
Hywts	31 1/2-	31 1/2-	31 1/2-	31 1/2-	32 1/2-
Fcy					
Med	26 1/2-	26 1/2-	26 1/2-	26 1/2-	27 1/2-
#1 Med	25 1/2-	25 1/2-	25 1/2-	25 1/2-	26 1/2-
Pullets	20 1/2-	20 1/2-	20 1/2-	20 1/2-	20 1/2-
P-wees	16 -	16 -	16 -	16 -	16 -
<b>Browns</b>					
Ex. Fcy.					
Hywts	33 -	33 -	33 -	33 -	34 -
Fcy					
Hywts	32 1/2-	32 1/2-	32 1/2-	32 1/2-	33 1/2-
Fcy					
Med.	27 -	27 -	27 -	27 -	27 1/2-
Pullets	25 -	25 -	25 -	25 -	25 -
P-wees	16 -	16 -	16 -	16 -	16 -
<b>Mixed</b>					
Fcy.					
Hywts	31 1/2-	31 1/2-	31 1/2-	31 1/2-	32 1/2-
#1 Med	25 1/2-	25 1/2-	25 1/2-	25 1/2-	26 1/2-
Pullets	20 1/2-	20 1/2-	20 1/2-	20 1/2-	20 1/2-
Stds	30 -	30 -	30 -	30 -	30 -31
Checks	28 -	28 -	28 -	28 -	28 -29

TREND—Better orders for top whites into chain store outlets and the further movement of some goods into storage clearing market better and position steadier.

Copyrighted 1960 By Urner-Barry Co.

More farmers each month prefer to buy their

✓ HAY ✓ STRAW  
✓ EAR CORN



from us for better value and all around satisfaction. At farm or delivered, any quantity as your requirements may be.

PHONE STRASBURG OV 7-3211

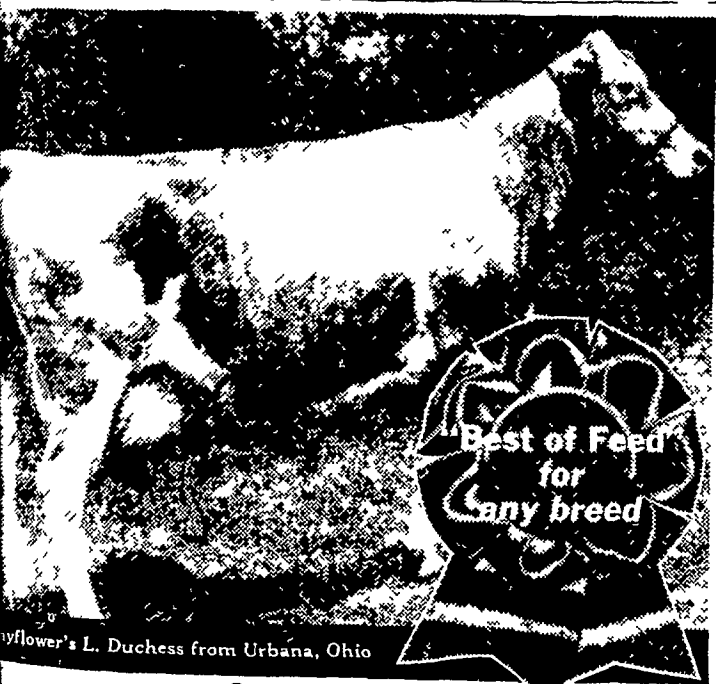
ESBENSHADE TURKEY FARM  
PARADISE, PA.

**LOANS**

FOR ANY FARM PURPOSE  
MADE THE FARMER'S WAY

LANCASTER PRODUCTION CREDIT ASS'N

411 W. Roseville Rd.  
Lancaster, Pa.  
Ph. Lanc. EX 3-3921



New World Champion Jr. 4-Year Old Guernsey produces 21,392 lbs. of Milk on Red Rose Feed

Meet the new World Champion Jr. 4-Year Old Guernsey milk producer. She's Mayflower's L. Duchess of Mayflower Farm, Route #3, Urbana, Ohio, owned by Jack C. Foust and Donald Barger. L. Duchess made 21,392 lbs. of milk and 901 lbs. of fat in 305 days on 2 x H.I.R. test. She averaged 70.0 lbs. of milk per day.

"We fed her 23 lbs. of Red Rose 14 Test-Cow per day and good hay. She held her body weight all through the hot weather. Red Rose 14 Test-Cow is better than any feed we have ever used. It kept her appetite from lagging, and she also maintained production during the warm summer months when production ordinarily drops," say the owners.

"We increased Duchess' production by 7,069 lbs. and 227 lbs. of fat over her last lactation on Red Rose 14 Test-Cow."

If you are interested in increasing the production of your dairy herd, ask us about the complete Red Rose Dairy Program.



**Red Rose**

14 Test-Cow Feed

This record-producing feed is formulated for heavy milkers. It is made from high quality grains, high in fat, minerals and digestible nutrients. By pelleting the finer materials in this ration, RED ROSE 14 Test-Cow Feed has a coarse, granular texture that many dairy-men prefer. Try it.

DAVID B. HURST  
Bowmansville, Pa.

A. L. HERR & BRO.  
Quarryville, Pa.

MUSSER FARMS, INC.  
R. D. 2, Columbia, Pa.

BROWN & REA  
Atglen, Pa.

WEST WILLOW FARMERS ASSOCIATION  
West Willow, Pa.

Corn Farmers:

IT'S STILL NOT TOO LATE

to get full season weed control

Spray on

**ATRAZINE 80 W**

HERBICIDE

before weeds and grasses are no more than one-and-a-half inches tall.

Applied post-planting—any time before weeds and grasses are not more than 1 1/2 inches tall—Atrazine kills germinating weeds and those present at the time of spraying, and controls weeds that subsequently may germinate all season long.

YOU GET WEED-FREE CORN FOR INCREASED YIELDS—EARLIER AND EASIER PICKING. SO DON'T DELAY—GET YOUR ATRAZINE TODAY.

GEIGY ORIGINALS OF DDT INSECTICIDES

GEIGY AGRICULTURAL CHEMICALS • Division of Geigy Chemical Corporation

- |   |  |
|---|--|
| Atglen<br>Blend & McGinnis  | Litz<br>Eby's Mill, Inc.<br>35 N Cedar St.                     |
| Elkview<br>Chambers & Smith   | Manheim<br>Cassel's Mill, Inc.<br>R. D. #1                     |
| Ephrata<br>Farmersville Equip Co  | Oxford<br>Oxford Grain & Hay Co., Inc.                         |
| Florin<br>Hess Bros.  | Quarryville<br>Musser's Mill                                   |
| Kirkwood<br>L. H. Jackson   | Ronks<br>Lester A. Singer                                      |
| Lancaster<br>L. H. Brubaker<br>350 Strasburg Pike<br>Harold Zook<br>220 Lampeter Road | Stevens<br>Herbert F Gehr<br>R. D #1<br>Leroy Pfautz<br>R D #1 |
| Lebanon<br>Kreider Farm Supply<br>R. D #4   | Washington Boro<br>Nissley Farm Service                        |
| Elmer E Plasterer, Inc.<br>R. D. #5   | West Grove<br>S G Lewis & Son                                  |
| Lincoln University<br>Fisher & Sons, Inc.   | West Willow<br>West Willow Farmers Assn.                       |

J. C. Ehrlich Chemical Co., Inc.

736 EAST CHESTNUT STREET

LANCASTER, PA. PHONE EX 7-3721