

Balance Pasture With Grains For Faster Livestock Gains

With many cattle feeding operations in southeastern Pennsylvania there is a place for the utilization of pasture in the fattening program. Many feeders inquire about the proper use of this pasture for putting on the most pounds of beef and whether or not any grain should be fed to the cattle while on pasture, County Agent M M Smith said this week.

A study of the research done in this area at a number of experimental stations from Virginia to Missouri reveals that the most efficient use of the pasture will be gained by grazing the cattle on pasture alone during the early summer months. In some cases the steers were fed corn and cob chop daily along with the pasture to increase the daily gains but this also ran up the costs of the pounds of gain. When the pasture grasses are lush during May, June, and July, it is definitely known that it does not pay to feed protein supplement to the cattle, Smith said.

During late July or early August when most pastures begin to dry up it is suggested that cattle be either fed a balanced ration of corn and cob chop plus protein supplement while still on pasture, or that they be put into a dry lot and grain fed for at least 60 to 90 days, without any pasture. In addition to the more rapid gains obtained while in the dry lot on grain feeds, the grade and quality of the cattle will no doubt be increased and a higher market value may be realized.

In addition, it is suggested that cattle feeders utilizing pasture for the early summer months provide free choice of some dry matter

such as first cutting hay or straw in order to reduce the problem of scouring and of bloating. This is especially true if the pasture mixture contains large amounts of legumes such as clover or alfalfa. The regular mowing of the pasture every four to six weeks will encourage a new growth and provide some dry matter in the form of the clippings.

Comparative experiments of similar groups of cattle on different mixtures of grasses and legumes resulted in the cattle on the pastures containing legumes such as alfalfa, clover, or trefoil making the highest daily gains; these were not straight legume pastures but mixtures containing grasses and legumes. Steer calves on good pasture should gain from 10 to 15 pounds per head per day; while yearlings should gain from 15 to 20 pounds per day.

Smith urged local feeders to utilize pasture to help fatten and grow their cattle in the early part of the summer and in the early part of the feeding period. For late summer and for finishing the cattle the use of dry lot and either grain feeding, or a mixture of silage and grain feeding, will no doubt give the cheapest grains and the highest quality beef," he said.

Pressure Canner Best For Most Vegetables

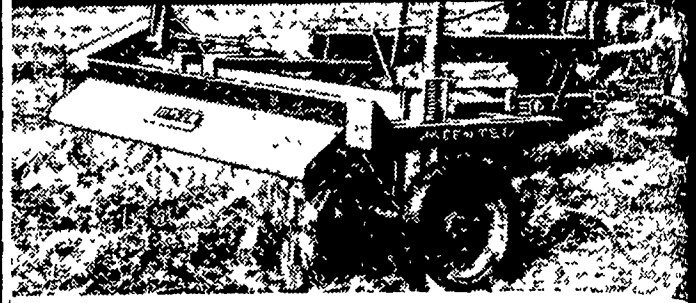
Between now and the time early garden vegetables will be ready for canning, check your steam-pressure canner, advises Louise Hamilton, extension foods and nutrition specialist of the Pennsylvania State University.

Processing in the steam-pressure canner is the safest and best way to can non-acid vegetables, such as asparagus and peas. Because it takes a temperature higher than that of boiling water to destroy spoilage organism in nonacid foods, the pressure canner is recommended.

An accurate pressure gauge is essential to get and hold the processing temperatures needed to destroy organisms and prevent food spoilage. A weighted gauge needs only to be thoroughly clean, but a dial gauge needs checking before the canning season and also during it if the canner is used often. Your county extension home economist can give you information on checking the dial gauge.

Patronize Lancaster Farming Advertisers.

MEYER Saves the Leaves



MEYER Hay Conditioner Model No. 675

Leaves Stay on Stems when SLOW ROLLED

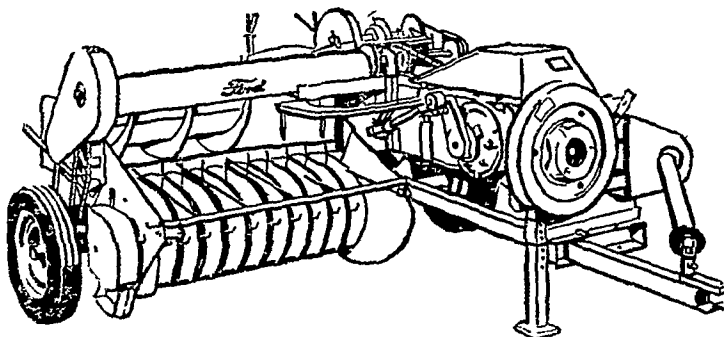
MEYER Conditioning Rolls revolve slower . . . because they are fed by an exclusive, separate pick-up — and do NOT rely on high speed in order to pick up the hay. When high speed rolls are used, hay is grabbed up and forced through . . . leaves are lost. With the MEYER, the hay is lifted and fed through the slower-moving rolls which thoroughly but gently crack the entire stems without crumpling and gently press the leaves. The leaves a MEYER saves put more dollars into your pocket, yet MEYER is priced lower.

Condition while you cut. Use your own mower with Model 675, or get Model 680 with built-in mower, a MEYER patented feature. Model 205, without separate pick-up, is for use on smooth, rock-and-terrace-free fields. Does superior job to crimper-type machine.

MEYER — maker of famous MEYER elevators — is the original and oldest manufacturer of hay conditioners — with over five years more experience than all other makes.

J. PAUL NOLT
LINCOLN HIGHWAY, GAP

FORD BALER



Low Cost Baling . . . AT ITS BEST—

- FULL FLOATING PICK-UP
- SIMPLE, BIG CAPACITY FEEDING
- IMPROVED FORD KNOTTERS
- ENGINE or P. T. O. DRIVE
- 6 BALE DOGS
- SPECIAL TWINE FINGERS
- BALE TENSION BARS
- SWEEP FORK FEED
- FLYWHEEL SLIP CLUTCH

For Extra Ease of Operation Use Ford's Exclusive Select-O-Speed Tractors



Elizabethtown
Farmers Supply, Inc.
Elizabethtown
Phone EM 7-1341

Keener Equip. Co.
Rts. 230 & 72, Lancaster
Phone LO 9-9851

Conestoga
Farm Service
Park Ave., Quarryville
Phone ST 6-2597

Sauder Bros.
New Holland
Phone EL 4-8721

Allen H. Matz
Denver
Phone AN 7-6507

holland stone

The new, beautiful building stone
ready for immediate delivery!

New Holland Concrete Products
New Holland, Pa. ELgin 4-2114

K-137 KimberCHIKS...



**10¢ to 34¢ MORE NET INCOME
THAN OTHER MAJOR EGG STRAINS***
(35¢ more than average entry in 15 tests)

*Based on final reports in 1959-60 Random Sample Tests in Ariz., B.C., Calif., Fla., Ia., Minn., Mo., C.N.Y., W.N.Y., N.C., Pa., Tenn., Tex., Utah, and Wisc.

In the three 1959-60 tests in which the new K-155 Kimberchik was entered, it equalled the well-known K-137 in net income.

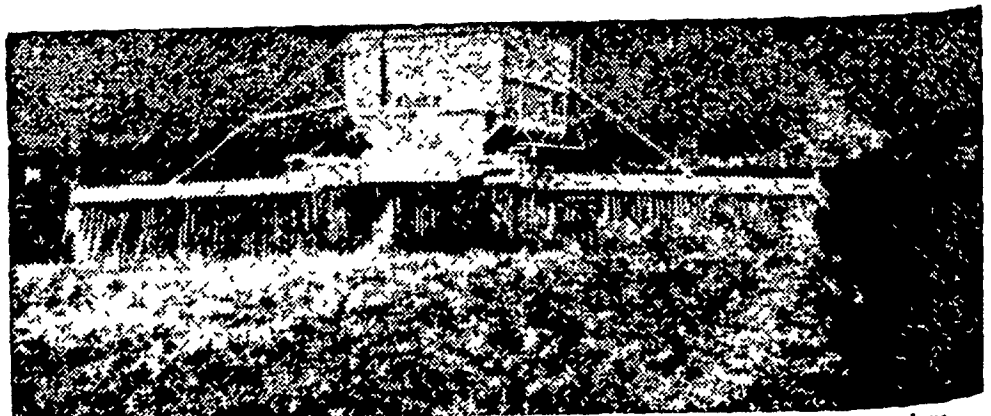
Have us reserve your 1961 Kimber pullets now!

Longenecker's Hatchery

ELIZABETHTOWN, PA.

EMpire 7-1545

MARTIN'S LIMESTONE



Order your Limestone now for even spreading by our modern spreaders.
Quick Service Free Soil Tests Quality Limestone

Ivan M. Martin, Inc., Blue Ball, Pa.

Telephones: New Holland ELgin 4-2112 Terre Hill Hillcrest 5-3455
Gap Hickory 2-4148