

Poultry Center

Price Decline Continues

Broiler prices, on the low side for several wks., continued to slip at the Lancaster Poultry Center. Demand about a half cent per lb. from last week, broilers brought 15 to 16.8 for average of 15.2 on 86,000 head in 22 lots. Only 10 per cent of the birds were bid to more than 15.2. Sale for the corresponding week in 1960 had an average of 19.66 with some going as high as 20.8.

Thursday's sale had 3,000 lots in two lots that sold 20 and 23. Six lots containing 5,700 roasters brought 21 to 24 while 17,000 broiler fowl in three lots sold 9.5 to 10.8. A lot of heavy fowl brought 10.5 while one lot of 100 crossed the block at 10.5.

Following is the complete list of lots which offered a total of 24,725 head in 45 lots including 35 lots including 75 head. Sale results in lot number, seller, the price in parenthesis, amount and breed, age in wks.

and days, buyer and price. CODE: WV - white vantage, X - cross, C - cockers, P - pullets, R - roasters, IR - indian rivers, HSWC - hubbard silver white cockers, LF - leghorn fowl, WRF - white rock fowl.

1. Miller & Bushong, Inc. (Paul Livengood) 1500 IR, 9-2, Roy E. Ream, 15.1; 2. Garden Spot Broilers (Jacob C. Herr), 4400 WVX, 9-4, NO SALE, 15.2 bid; 3. Same, 15.1 bid; 4. Same, 14.9 bid; 5. Same, (John L. Her), 350 WVC, 14-2, Walter B. Lehman, 24.
6. Same 1100 WVP, 14-2, W. C. Mellinger & Son, 23; 7. George Neauman, 3000 WV, 9-2, Daniel K. Good, 15.1; 8. Same, 2800 WV, 9-2, Daniel K. Good, 15.1; 9. Same, 4000 WV, 9-2, Starr Poultry, 15.2; 10. Same, 2500 WV, 9-2, Starr Poultry, 15.2.
11. Anson Long, 1500 WVC 12.6, NO SALE 20 - bid; 12. Same; 13. Same 20 bid; 14. Same 1900 WVP, 12.6, W. C. Mellinger & Son, 20; 15. Jack Bucher, 4800 WV, 8, Starr Poultry, 15.1.
16. Same Meader's Poultry, 15.1; 17. Same, 5200 WV 9-1, Meader's Poultry, 15.1; 18. Same 5000 WV, 8-1, Meader's Poultry, 15.1; 19. M&B (Lloyd Wenger), 6500 WV, 9-2, H. W. Longacre, Inc., 15.1; 20. M&B (Moses Zimmerman), 1000 WVC, 12-3, Daniel K. Good, 21.
21. M&B (Kenneth M. Funk), 250 HSWC, 12, Roy E. Ream 22.2; 22. Same, 500 HSWC, 12, NO SALE, 20 bid; 23. Same, 2250 HSWC, 12, Martin Brendle, 22.2; 24. M&B (Harold Glick), 1250 IRC, 12-2, W. C. Mellinger & Son, 21.9; 25. M&B (James Barley), 5500 WV, 9, Victor F. Weaver, inc, 15.
26. M&B (Donald Noll),

Delmarva-Georgia

Prices Trend Downward

Live prices in Delmarva averaged approximately 1/2 cent lower during the 24-hour period ending 10.30 on Friday morning. Prices at farms ranged from 14.20 to 14.90 for 740,800 head reported sold.

Offerings were ample for the processing requirements. Estimated slaughter for the week end by eastern shore processors was 677,000 head compared to the 720,000 head last week end.

Fluid Milk Surplus Moves To Separators

Fluid milk production along the Eastern coast was lighter in southern areas with near peak production reported throughout Pennsylvania and New Jersey. Rapid increases were noted throughout south and central sections of New York and New England, while northern areas reported unchanged to slightly higher receipts.

Supplies were adequate in the southeast though much of the milk was of low quality due to butterweed. Other markets along the east coast had ample to more than ample supplies with manufacturers' facilities in New York nearly filled to capacity and concessions made in instances by the shipper to obtain outlets.

Surplus in other areas cleared to separators. Class one needs devoted little from the previous week.

1500 WV, 9-2, Daniel K. Good, 15.2; 27. Same Martin (Turn to page 14)

Weekly New York Egg Mkt.

From Monday, May 15th to Friday, May 19th

	Mon.	Tues.	Wed.	Thurs.	Fri.
Whites					
Ex. Fcy.					
Hywts	33 3/4-34	32 1/2-	31 1/4-	31 1/2-	31 1/2-
Fcy					
Hywts	34 -	32 1/2-	31 3/4-	31 1/2-	31 1/2-
Fcy					
Med.	27 -27 3/4	26 3/4-	26 1/2-	26 1/2-	26 1/2-
#1 Med	27 1/2-	26 -	26 -	25 1/2-	25 1/2-
Pullets	22 1/2-	21 -	21 -	20 1/2-	20 1/2-
P-wees	17 -	16 -	16 -	16 -	16 -
Browns					
Ex. Fcy.					
Hywts	34 -	34 -	34 -	33 -	33 -
Fcy					
Hywts	34 -	34 -	34 -	32 1/2-	32 1/2-
Fcy					
Med.	28 1/2-	28 1/2-	28 1/2-	28 -	27 -
Pullets	26 -	25 -	25 -	25 -	25 -
Pullets	26 -	25 -	25 -	25 -	25 -
P-wees	17 -	16 -	16 -	16 -	16 -
Mixed					
Fcy.					
Hywts	34 -	32 1/2-	31 3/4-	31 1/2-	31 1/2-
#1 Med	27 -	26 -	26 -	25 1/2-	25 1/2-
Pullets	22 1/2-	21 -	21 -	20 1/2-	20 1/2-
Stds	32 -	31 -	30 -	30 -	30 -
Checks	29 1/2-	28 1/2-	28 1/2-	28 1/2-	28 -

TREND: Market still showing fairly liberal surplus of Extra Fancy Heavyweight whites but undertone a shade improved as some storage interest has developed.

Copyrighted 1960 By Urner-Barry Co.

Wholesale selling price in your own easy reach, and New York was \$4.40 to \$4.45, with an occasional sale at \$4.35 per 40 quart unit of bottling quality milk.

STORAGE PRINCIPLES

Three principles which lead to a convenient kitchen are: Store things where you use them first, store within equipment and staple foods.

LOANS

FOR ANY FARM PURPOSE
MADE THE FARMER'S WAY

LANCASTER PRODUCTION CREDIT ASS'N

411 W. Roseville Rd.
Lancaster, Pa.
Ph. Lanc. EX 3-3921



Dieldrin sprays are economical and long-lasting. They control major potato insects.

POTATOES:

How to get sure control of major potato pests with dieldrin

Dieldrin controls potato flea beetles, Colorado potato beetles, armyworms, cutworms, and European corn borers.

One application lasts for days. This means you make fewer sprays—save time and money. Here are the details:

POTATO pests such as flea beetles and Colorado potato beetles cause serious damage by chewing the potato plant leaves.

Low-cost, long-lasting dieldrin protection

Dieldrin effectively and economically controls major potato insects.

As little as 1/4 pound of dieldrin per acre does all it takes to do the job. Its long-lasting protection means fewer applications.

When applied in accordance with the

label, dieldrin can be used to within 3 days of harvest without exceeding residue tolerances.

Where to get dieldrin

Dieldrin is available from your local insecticide dealer under well-known brand names. It comes as a liquid or dust.

Accept no substitute. Check the label or ingredient statement for the name dieldrin.

Shell Chemical Company, Agricultural Chemicals Division, 2299 Vauxhall Road, Union, New Jersey.

Shell Chemical Company



Agricultural Chemicals Division

POTATO GROWERS —

We have 50% wettable powder dieldrin or 1.5 dieldrin E. C.

CONTACT YOUR NEAREST MILLER DEALER OR

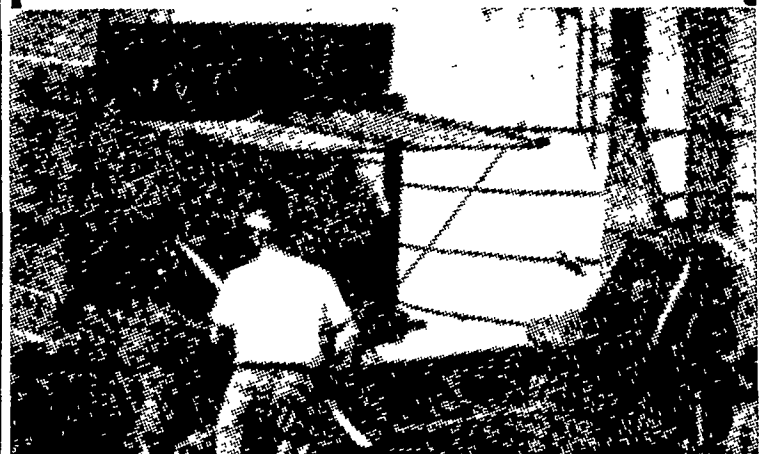


Miller Chemical & Fertilizer Corporation

P. O. BOX 25, EPHRATA

Phone RE 3-6525

Making Silage?



PRESERVE and IMPROVE YOURS WITH

Eshelman LANCASTER Sweet Mix

- A BLEND OF MOLASSES
- CONVENIENT and ECONOMICAL
- AN IDEAL PRESERVATIVE

Lancaster Sweet Mix can be fed into the chopper or blower, spread in the silo or added in the field as silage is loaded. To chopped grasses add 100-150 lbs. of Sweet Mix per ton; to mixed grass-legumes add 150-200 lbs. per ton, and to legumes, add 200-300 lbs. of Sweet Mix per ton.

BEFORE YOU FILL YOUR SILO see us for complete details and price.

SNADER'S MILL I. B. GRAYBILL & SON
R. D. 1, Stevens, Pa. Refton, Pa.

LEROY GEIB, EST. WALTER & JACKSON, INC.
R. D. 2, Manheim, Pa. Christiana, Pa.

MOUNTVILLE JOSEPH M. GOOD & SONS
FEED SERVICE 137 Newport Road,
R. D. 2, Columbia, Pa. Leola, Pa.