

At Lancaster Yards Slow, Steady To Lower

CATTLE. 3700 compared with 3758 last week. Supply includes 50 percent slaughter steers and 40 percent stockers and feeders. Trading was slow Slaughter steers steady to 50 lower, closing Monday 25-50 lower. Cows fully 25 lower. Bulls weak. Stockers and feeders weak.

Slaughter Steers: Choice grade 950-1300 lbs. 24.25-26.50, two lots 1200 lb high - Choice 26.50, Good to low-Choice 22.75-24.25, Standard 21.00-22.50.

Heifers: Load Good 751 lbs. 22.50

Cows: Cutters and Utility 1700-18.50, few 18.75, Canners and low-Cutters 15.50-17.00, shelly Canners down to 13.00

Bulls: Utility and Commercial 19.50-22.50, Good grade 22.00-23.75.

Stockers & Feeders: Good and Choice 800-1100 lb feeder steers 24.00-26.50, Medium and Good 21.00-25.00. Good and Choice 500-800 lb. stock steers 25.60-27.00, Medium & Good 22.00-25.50, few lots Good and Choice stock calves 26.00-29.00.

CALVES: 575 compared with 592 last week. Trading moderately active Vealers 1.00 higher Good & Choice brought 30.00-36.00, Choice and Prime 36.00-40.00, few 41.00, Standard and low - Good 26.00-30.00, Utility down to 23.00

HOGS. 1860 compared with 2038 last week Trading moderately active All classes steady

Barrows & Gilts: U S. 1-2 190-220 lbs 18.75-19.50, several lots no 1 190-225 lbs

19.75-20.50 1-3 190-230 lbs. 18.00-18.50, 230-250 lbs 17.25-18.00.

Sows: 13, mostly 2-3, 300-600 lbs. 12.00-15.00

SHEEP: 400 compared with 745 last week. Spring lambs 2.00 lower than last week's close. Trading moderately active. Choice and Prime 50-80 lb. spring lambs sold at 22.50-24.00 with a few Prime 25.00, Good and Choice 21.00 - 23.00.

Witstead Lado Lucifer produced 13762 lbs milk and 604 lbs butterfat in 365 days on twice daily milking as a 9-year-old Garwood Lucifer Lucy; 15,687 lbs. milk and 663 lbs butterfat in 314 days on twice daily milking as a 4-year-old. Lesanna Lauxmont Lyons: 15,845 lbs. milk and 691 lbs. butterfat in 318 days on twice daily milking as a 6-year-old G'eneig Majorette: 18,781 lbs of milk and 800 lbs. butterfat in 365 days on twice daily milking as a 10-year-old. All are Holstein cows owned by Robert C. Groff, Quarryville, Pa.

PREVENT RABBIT DAMAGE

Cottontail rabbits like to feed on new growth in home gardens and flower beds. Robert Wingard, extension wildlife management specialist says fencing with 1-inch mesh poultry wire 18 inches to 2 feet high will protect the plants or chemical repellents may be used to make the plants distasteful to the bunnies.

Vintage Livestock Most Steady Bulls Lower

Compared with last wk's market, slaughter steers steady with fills considered at the May 9 auction at Vintage. Cows steady. Bulls 50 lower. Receipts were 419 cattle.

Bulk of the choice grade slaughter steers 24.50-25.50. Several lots mostly 975 - 1125 lbs. 25.50-26.35. Good to low-choice 22.50-24.50, Standard 20.50-22.

Cutter and utility cows at 17.50-18.60, cannors and low cutters 15.75-17.50. Shelly cannors down to 13.

Utility and commercial bulls 19-22.50. Lot choice 732 lb. stock steers 23.85.

CALVES: 267. Vealers steady to 2 higher with utility and standard showing the most advance. Good and choice vealers 31-36.50, the bulk of the choice 36.50-39.50, good to low choice 26-31, utility down to 24.

HOGS: 93. Barrows and gilts strong. U.S. 1-3 1887-230 lbs. 18.25-18.35, lot 230 lbs. 1-3 17.85. Small lot medium 158 lbs. 17.35. Pen no. 2 246 lbs. 17.75.

SHEEP: 81. Spring slaughter lambs 1 lower. Choice and prime spring lambs weighing 50-70 lbs. 22-24, good and choice 20-22. Cull to choice shorn slaughter ewes 3-6.50.

Milk Market

(From page 3)

over class one needs moved to manufacturing outlets and to separators.

Wholesale selling price in New York for bottling quality milk was mostly \$4.45 per 40 quart unit.

New Holland Top Grades Feel Pressure

Receipts included 857 cattle at the May 11 auction at New Holland. Compared with last week's market, slaughter steers grading average-Good and below and weighing under 105 lbs. fully steady. All others steady to 50 lower Cows and bulls steady.

The bulk of the Choice grade slaughter steers 1350 lbs. and down 24.50-26.00 with several lots 1400-1550 lbs. grading high-Choice and Prime 25.00-25.75, Good to low-Choice 22.75, Standard down to 21.00

Cutter and Utility cows 16.50-18.50, Cannors and low-Cutters 15.50-16.75, shelly Cannors down to 13.50. Several lots Good grade 803-868 lb. feeder steers 22.60-23.10.

CALVES: 200. Vealers grading, Standard and below fully steady. Good grade and better 2.00 lower. Good and Choice vealers 30.00-36.00, most Choice 36.00-39.00, Standard and low-Good 26-31.00, Utility 24.00-27.00.

The dairy cattle market was very draggy at the May 10 auction when 135 head of cows, 16 stock bulls and 38 heifers were sold.

Fresh Holstein cows made \$300 to \$427.50, Guernseys - \$175-275, and other breeds - \$175 to \$275. Stock bulls brought \$70-185 and stock heifers made \$70-150

Saddle horses sold very active and higher at the May 8 auction of horses, ponies & mules. Killers were higher and all other kinds were steady. Receipts included 271

Mules, by the pair brought \$300-500 while single mules made \$140-232.50. Pony mares sold for \$110-140 and geldings brought \$55-110,

Riding horses were \$140-275 with driving horses at \$140-200. Killers brought 9 to 10 cents.

Chicago Cattle Larger Receipts Exert Pressure

WEEKLY REVIEW - CATTLE: Receipts increased about 10 percent and largest for any week this year

Slaughter steers 50 to 125 lower with choice and prime largely 1.00 lower, heifers steady to 50 lower with choice and prime at greatest downturn, cows mostly steady, other classes in very small supply and unchanged

Three loads prime 1250-1375 lb. steers 27.00 and few loads 26.75 Monday but only one load prime 1320 lbs 26.75 Wednesday. Bulk prime and mixed choice and prime 1050-1450 lb. Steers 24.25-26.50 with most sales 26.00 down at the close. Late bulk choice 900-1400 lbs 22.75-24.25. Late and bulk good 21.00-22.25. Utility and standard 18.50-21.00.

Most choice heifers 22.75-23.75 largely 23.50 down with few choice around 1100 lbs. 22.50 late. Good 20.50-22.25 at the close

Commercial cows 16.00-17.50. Cannors 13.50-15.50 Utility and Commercial bulls 18.00-20.50, good and choice vealers 25.00-29.00

Few lots medium to good 850-1008 lb feeding steers 20.00-23.00.

Try a Classified Ad.

For A Good Harvest This Fall

Before Planting Corn, Tomato and Tobacco Fields

APPLY

NEW JERSEY POTASH "GREEN SAND" AND COLLOIDIAL PHOSPHATE (Calphos)

Call Now For Off-Car Discount

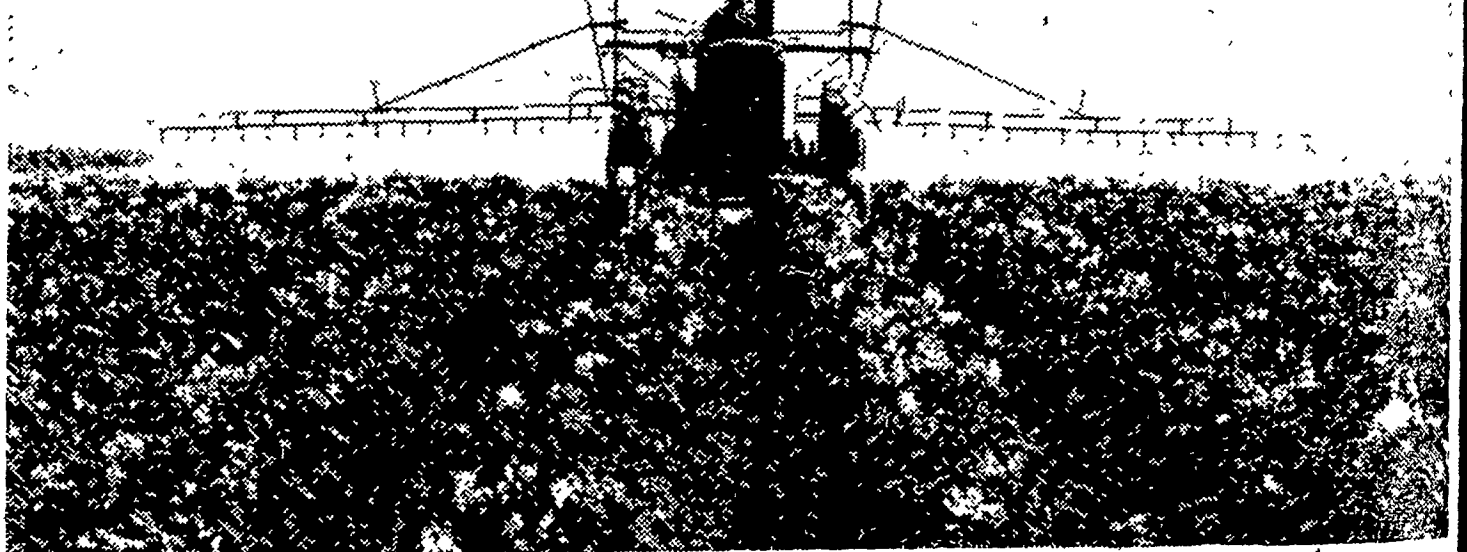
Brooklawn Farm

118 Kreider Avenue LANCASTER LO 9-1580 or See Your Local Dealer

WHEELHORSE and SIMPLICITY Garden Tractors
Snaveley's Farm Service
NEW HOLLAND EL4-2214

Buy Your **MANZATE**® through **EASTERN STATES FARMERS' EXCHANGE**
Available in All Lancaster County Communities

Here come bigger potato profits!



When sprayed on your potatoes, "Manzate" clings to leaves, resists washing off. You get long-lasting protection against blight

Spray Du Pont Manzate® to control blights

maneb fungicide

... assure top yields of No. 1's



Each acre you spray with "Manzate" can yield bushels more of #1's like these. Field applications of "Manzate" protect your crops from late blight tuber rot, too.

One-chemical blight control—a spray program with "Manzate" maneb fungicide controls both early and late blights.

Better yields, quality and profits—"Manzate" helps boost yields as much as 40 bushels per acre... gives you more #1's, and naturally increases profits, as proved by growers in all major producing areas.

Safe to use—"Manzate" is tough on disease, mild on plants. It can be used on potatoes right up to harvest time... won't stunt plant growth.

Saves time and money—"Manzate" is a wettable powder, ready to mix wherever there's water. It is compatible with most insecticides and fertilizers so you save money with efficient combination sprays.

Saves trouble—"Manzate" has been thoroughly proved over the years—you know you can depend on it for top disease control, easy handling.

On all chemicals, follow labeling instructions and warnings carefully



MANZATE

maneb fungicide

BETTER THINGS FOR BETTER LIVING THROUGH CHEMISTRY

MANZATE and OTHER DUPONT PRODUCTS

Distributed by

J. C. EHRlich CHEMICAL CO., Inc.

736 East Chestnut Street

Phone EX 7-3721

Lancaster, Penna.



They say,

"The Early Bird Gets The Worm!"

That's all right if you like worms—

It's still not too late to try

HONEGGER LAYERS

Consistent! Persistent! Resistant!

J. HOWARD MOORE, 307 East Second Avenue LITITZ, PENNA.

Phone: MADison 6-5408

Windle's Hatchery

COCHRANVILLE, PA.

Phone: Atglen LY 3-5941