

## Broadcast Corn For Silage Has Drawbacks

Planting corn in a thick broadcast stand for green chop and silage is a questionable practice, say extension dairy specialists.

This kind of planting on fertile soil will produce a tremendous yield of forage for green chopping. However, sudan grass will withstand more dry weather and higher temperatures, and will

provide a green chop over a longer period. A combination of a field of broadcast corn and a field of sudan may be a compromise.

Broadcast corn results in a high moisture, no-grain silage, the dairy specialists note. It's more like grass silage than a new chop silage.

Adding several hundred pounds of dry grain or wilting will be required to prevent high seepage loss from the silo. Allowing broadcast corn to mature to correct moisture may result in lodging.

High nitrate content is definitely a greater possibility in broadcast stands of corn than in the normal row stands, research shows.

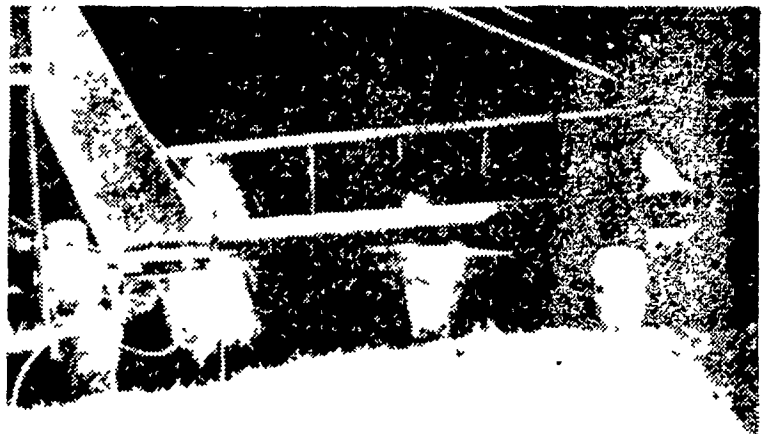
While this problem is likely to be more serious in silage made from this forage, it can also cause trouble when feeding green chop.

## Jersey Breeders Start Program

A determined group of Keystone Jersey dairymen have launched the first phase of a startling new self-help program designed to increase the demand and price of Jersey cattle by creating a demand for All-Jersey milk.

Leaders of the Pennsylvania Jersey Cattle Club recently completed a statewide canvas of Jersey dairymen to solicit support for the breed's nationwide "5,000 Heifers for Jersey Promotion" project.

Pennsylvania's quota, based on registration activity, was 197 heifers. At the organization's annual meeting at State College recently, Edison Osborne, Cornwall Farm, Peach Bottom, Chairman of the state campaign, announced



ON THE SUNNY SIDE OF THE BARN away from winds, the feeder cattle on the Raymond Bucher farm, Lititz R1, eat silage from this bunker all year. The cattle are self fed silage with the grain ration automatically sprinkled on the feeding face of the silage pile. Concrete floors make the job of cleanup easier and quicker. —L. F. Photo

ed that 235 pledges had been received with more contacts to be made. This represents 119% of the assigned quota, a new record for a state Jersey organization. Idaho had previously reported 115% of the state quota.

During the next several weeks, the pledged heifers will be assembled, sold and proceeds deposited with National All-Jersey Inc., Columbus, Ohio the parent organization. Pennsylvania Jerseymen will receive the services of a full-time field representative to expand and promote the All-Jersey milk heifers program in the state.

**CHAIN SAW SERVICE CENTER**  
New & Used  
Snavey's Farm Service  
NEW HOLLAND EL4-2214

MR. POULTRYMAN:

# Buy EARLY BIRD POULTRY RATIONS

## For BETTER RESULTS LOWER COSTS

HERE ARE A FEW REASONS WHY . . . .

1. Finest nutritional and research facilities in this area of the Eastern United States.
2. Our customers consistently report outstanding records of performance.

For Example:

We have records of customers who produced from 243.5 to as high as 275.2 eggs per hen housed on from 4 lbs. down to 3.9 lbs. of feed per dozen eggs produced.

3. We render REAL SERVICE and are sincerely interested in the SUCCESS of our customers.

FOR THE FINEST POULTRY SERVICE ANYWHERE contact your Miller & Bushong Service representative or call us direct at Lancaster, EXpress 2-2145.



REMEMBER: It takes Quality Eggs to preserve the market for Eastern Pennsylvania Eggs.

Can we help you improve your quality?



# Miller & Bushong, Inc.

Rohrerstown, Pa.

Ph. Lancaster EX 2-2145

"Finest Service Anywhere"

## GREIDER LEGHORN FARMS

Distributors of

### The SHAVER Starcross 288 Leghorn

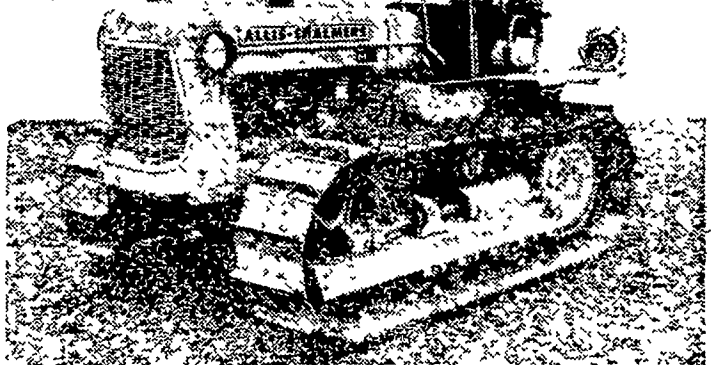
TRY THIS RUGGED, CANADIAN BRED LAYER ON YOUR FARM. YOU'LL GET PLENTY OF EGGS IN THE ROUGHEST WEATHER. BE IT HOT OR BE IT COLD.

**GREIDER LEGHORN FARMS, Inc.**

Phone Oldfield 3-2455

MT. JOY, R. 1, PA.

## NEW COMPACT CRAWLER



Brand new H-3 gasoline or HD-3 diesel has all the ruggedness of big Allis-Chalmers crawlers plus compactness for close quarters . . . toughness for heavy work, traction for sure footing.

This new 6,000-pound Allis-Chalmers compact crawler opens new possibilities for farm and ranch, including multiple implements, scraping feed areas, snow removal, dozing and blade work.

You'll like its new forward-reverse SHUTTLE clutch that lets you change directions instantly with single-lever control. Or if you prefer, you may have the Power Director transmission with 8 speeds forward and shift on-the-go between low and high ranges. Now you can have the crawler power you've always wanted. Let us show you.

Finance for profit. Ask us about Allis-Chalmers' time payment plans.

Get the dollar-making difference with

**ALLIS-CHALMERS**  
SALES & SERVICE



**Mann & Grumelli Farm Serv. R. S. Weaver**  
Quarryville, Pa. Stevens, Pa.

**L. H. Brubaker**  
Lititz, Pa.

**Nissley Farm Service**  
Washington Boro, Pa.

**N. G. Myers & Son**  
Rheems, Pa.

**L. H. Brubaker**  
Lancaster, Pa.

**Snavey's Farm Service**  
New Holland, Pa.