

This Week

(From page 4)

Among migratory farm workers, the National Grange, the American Farm Bureau and other responsible farm organizations immediately protested that, while there are incidents such as those depicted, these were rare exceptions rather than the rule.

The Grange charged Mr. Murrow with "biased and unfair" reporting. Herschel Newsom, Master of the Grange, said it would be just as unfair to say that because there are criminals in a city that all, or most, of the people in that city are criminals.

Farm Bureau President Charles Shuman charged that film made of a statement he

gave Mr. Murrow for use on the program was "edited to completely distort my statement." He asked for a correction, but none was made.

We understand the "Harvest of Shame" film has been sold to the British Broadcasting company and that it may be shown all over the world thereby providing improper

and unnecessary criticism of this Nation. Farm officials here are saying "shame on Mr. Murrow."

Be friendly with the folks you know. If it weren't for them, you'd be a total stranger.

Red Rose Farm Has High Record In DHIA

A registered Holstein cow in the Red Rose Research Center herd at 226 Pitney Road, Lancaster, completed the highest 305 day lactation record in the Red Rose Dairy Herd Improvement Association during March.

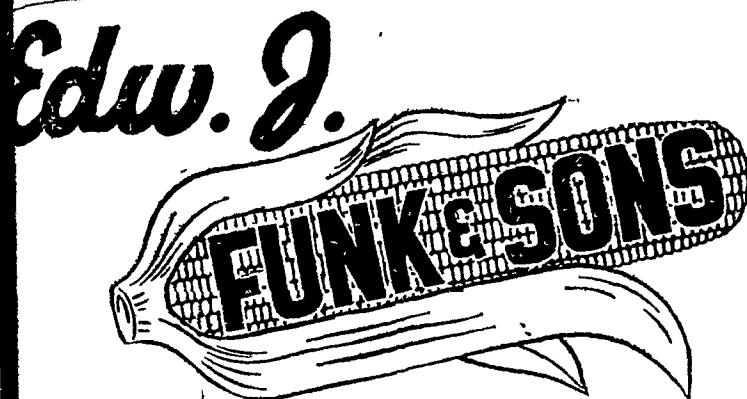
The high record of 19,411 pounds of milk and 728 lbs. of butterfat and a 38 percent test was followed closely by the 17,348 pounds of milk and 715 pounds of butterfat and a 41 per cent test by the registered holstein in the herd of Ezra M. Martin, Ephrata R1.

The highest butterfat average for the month was made by the 17 registered & grade holsteins in the herd of Richard Eby, Ephrata R1. The Eby herd averaged 1,558 lbs. of milk with a 30 per cent test and 60 pounds of butterfat.

The herds of Edwin J. Landis, Lancaster R7 and Clarence Stauffer, Ephrata R1 were tied for second place with 58 pounds of butterfat per cow. The 31 cows in the Landis Herd made 1,493 pounds of milk with a 39 per cent test while the 30 registered and grade holsteins in the Stauffer herd had 1,423 pounds of milk with a 41 per cent test.

In fourth place were the 18 registered Guernseys in the herd of David Breckbill, Lancaster R7, with 1,119 lbs of milk and 57 pounds of butterfat.

A total of 36 herds produced 50 or more pounds of butterfat per cow during the month.



SUPER CROST SEED CORN

Super-Crost Hybrid Seed Corn is bred, grown and processed by

EDW. J. FUNK & SONS

KENTLAND, INDIANA

Not Related to or Associated with any other Seed Company

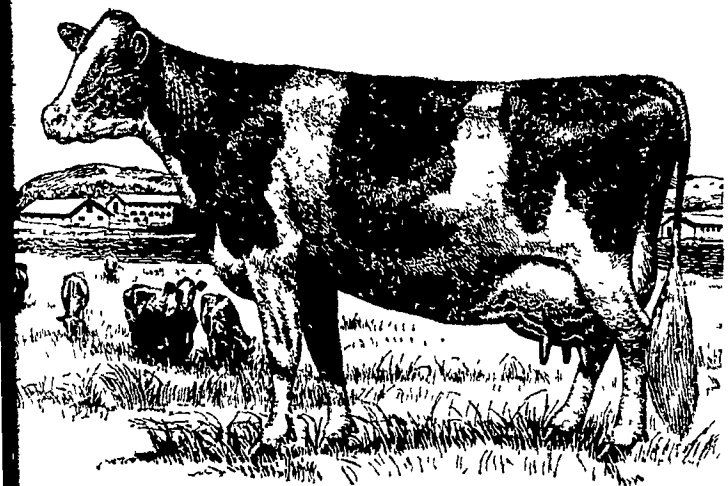
Territory Supervisor, Paul B. Hess
Call MA 6-8187 Lititz, R.D. 1

SUPER CROST DEALERS FOR LANCASTER CO.

Mervin Graybill, Mohnston	Elmer J. Witmer, Lancaster
Martin Groff, Ephrata	Raymond H. Moyer, Manheim
Elvin Herr, Quarryville	Frank A. Witmer
Li Hoover, Reinhold	Manheim R1
Carl E. Nissley, Elizabethtown	Elmer W. Guthridge, Manheim R4
Arnon H. Weaver, Quarryville	Ernest Bauman, Manheim

Supplement

GRASS with GRAIN



For More Milk All Summer Long

Every dairyman likes the boost in milk production his get from lush pasture. He knows it means more dollars in the milk check . . . and at lower feed cost per cwt. But dairymen know, too, that pasture can't do it alone. Elementary dry feed . . . including grain . . . is needed to counter laxative effect. This supplementary feeding keeps the cows hold body weight, keeps them in better shape to produce up to inherited capacity.

As pasture quality changes, too, as the season progresses. Grasses become dry and less palatable, cows graze less. As the weather gets hotter. Supplementary feeding becomes even more important then.

We'll be glad to recommend a specific program suited to your herd, your pastures. The Beacon Pasture Feeding Program has helped thousands of dairymen produce more milk . . . profitably. Chances are it can help you, too.

The Beacon Milling Company

DIVISION OF SPENCER KELLOGG & SONS, INC.

PHILADELPHIA & CARLISLE STS., YORK, PA.

Telephone: York 8-2341

BEACON



Ortho Gro and Isotox Transplanter Solution

Distributed by

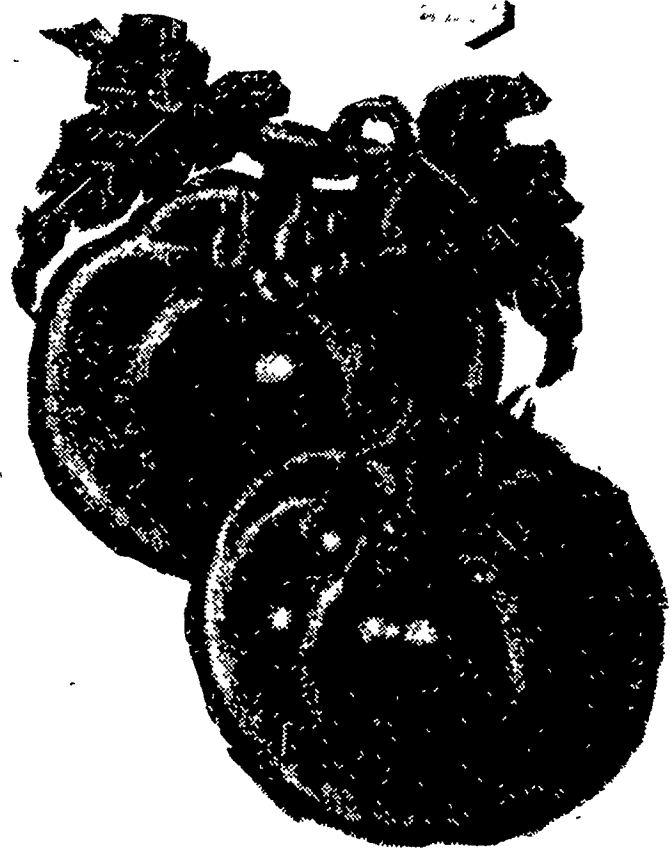


J. C. Ehrlich Chemical Co., Inc.

736 EAST CHESTNUT ST. LANCASTER, PA.

PH. EX 7-3721

SEE YOUR DEALER



IMPORTANT BULLETIN

Tomato planting time is here again . . . Give your plants the best start they've ever had . . . For soil insect control use NEW IMPROVED ISOTOX TRANSPLANTER SOLUTION. Contains plant hormones to help reduce wilting. Use with ORTHO-GRO STARTER SOLUTION for maximum plant response. EASIEST combination you ever used. Simply add both materials to transplanting water. Your best bet for healthy stands is ISOTOX TRANSPLANTING SOLUTION plus ORTHO-GRO STARTER SOLUTION.

California Chemical Corp.

BOX 165 ORTHO DIVISION YORK, PA.

ORTHO-GRO and ISOTOX

Available Now At

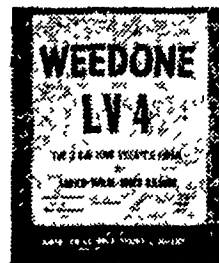
P. L. ROHRER & BRO., INC.

SMOKETOWN

Phone Lanc. EX 7-3539

CONTROL WEEDS

BETTER with Weedone 2, 4D



Weedone LV-4

1-gal Can 5 35
5-gal Can 25 75

Weedar 64 (Amine)

1 gal Can 3 75
5-gal Can 17.25

ATRAZINE

80% WETTABLE

8% ATRAZINE

GRANULAR

SPECIAL PRICES TO CUSTOM SPRAYERS

Methoxychlor

the recommended spray for spittle bug and weevil control in forage crops. Available now in 5-gal. cans and 30-gal drums.

INCREASE YIELD and improve quality of your hay crops by adding to your spittle bug spray.

Nutri-Leaf

(20-20-20)

5 lb. 1 75
25 lbs 7 50

P. L. ROHRER & BRO., INC.

SMOKETOWN, PA.
Ph. Lanc. EX 7-3539