

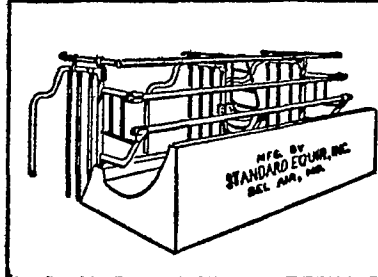
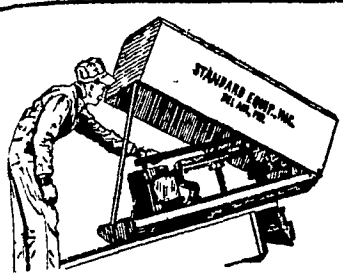
Plant Populations

Thicker Corn Will Pay Dividends

Reasonably high planting Walter I. Thomas, corn rates of hybrid field corn breeder for the Agricultural will, in most cases, produce Experiment Station at the more corn per acre than Pennsylvania State University planting rates now used, says sity.

BIG SAVINGS!!!!

STANDARD EQUIPMENT'S BIG SPRING DISCOUNT BARN CLEANERS and COMFORT STALLS



MIGHTY-MOVE BARN CLEANER **EASY-ALL COMFORT STALL**
Discount Changes: Mar 14, Apr. 15, May 16, May 31st
See Your Standard Dealer Today. Do Not Delay.

COPE & WEAVER CO.

WILLOW STREET Ph. Lancaster EX 3-2824

TODD



Properly Hybridized FOR Top Performance

Accurately Graded Seed Assures Precision Planting

Dealers qualified to supply the varieties for your needs.

- | | |
|--|--|
| ELI S. BEILER
R D 2 New Holland, Pa
Phone EL 4-0199 | LLOYD H. KREIDER
R. D. 2, Quarryville, Pa.
Phone LA 9-2204 |
| WM. A. DEAN
R. D. 1, Strasburg, Pa.
Phone OV 7-3484 | H. MERVIN McMICHAEL
R. D. 6, Lancaster, Pa.
Phone TR 2-4377 |
| RALPH HERTZLER
R. D. 2, Elverson, Pa.
Ph Morgantown AT 6-5647 | ARLINGTON MILLER
Elm, Pa.
Phone MO 5-8498 |
| AMMON KAUFFMAN
R. D. 2, Parkesburg, Pa.
Phone LY 3-5375 | JOHN R. TODD
R. D. 1, Lancaster, Pa.
Phone AT 5-2553 |
- JACK ROBINSON**
Bird-In-Hand, Pa.
Phone EX 3-0781

Dr. Thomas' conclusions are based on tests in 1959 of 64 long, medium, and short growing season hybrids thru-out the State. Areas tested were Landisville, Annville, Indiana, Centre Hall, Jersey Shore, and Knoxville.

"Without additional cost for fertilizer, farmers on average soils can increase their yields with only slightly additional cost for seed," Dr. Thomas points out.

Heavier rates of fertilizer in several tests would have made an even stronger case

for higher plant populations, the Penn State researcher says.

Caution may be necessary for those shallow soils which have low water holding capacity, however. As pointed out in the Penn State Agronomy Guide, plant populations of 12,000 to 14,000 plants per acre may be adequate for such soils

High plant populations were inferior to low plant populations only where shallow soil was hit by extremely dry weather. In six locations where the soil was deep, dry weather in 1959 had no greater effect on high plant populations than on low plant populations. Yields still were best with high planting rates.

don't neglect your

Check Stubs...



They give you a complete record of every check drawn. They show your exact balance at all times. This helps you to avoid overdrafts—checks written beyond the limit of your balance. They are a help in tracing checks that may stay out a long time.

So fill out the stubs as your checks are drawn They add to the value and convenience of your Checking Account.

Use Our Convenient DRIVE-IN WINDOW One-half block from Penn Square on South Queen Street — Rear of Main Bank.

FREE PARKING
25 S. Queen Street—Swan Parking Lot — Vine & S. Queen Sts. Stoner Parking Lot — S. W. Corner Vine & Queen Sts.



"Serving Lancaster from Center Square since 1889"
MILLERSVILLE BRANCH 302 N. GEORGE ST.

Member Federal Deposit Insurance Corporation
Maximum Insurance \$10,000 per depositor

Thomas believes some farmers are gradually turning to higher plant populations. Last spring he saw one farmer plow up a stand of corn with about 16,000 plants per acre, above average for Pennsylvania The farmer felt the corn was not thick enough for maximum yields.

Faster Gain With Grit For Chicks

Dr W S Wilkinson and W. B Hilton, Department of Poultry Industry, The Louisiana State University, have reported recently a study covering effects of adding oats and/or insoluble grit to an all-mash ration for pullets grown in confinement

Results of the test indicated that chicks having access to insoluble grit weighed more at eight weeks and at 16 weeks of age, respectively, than did birds in the control pens which did not receive grit

Feed conversion rates computed for the chicks at eight weeks and 16 weeks of age, respectively, indicated consistently better feed conversion rates for the grit-fed birds Gizzard weights taken at 16 weeks were higher for the birds receiving grit than for those not receiving grit.

The test involved 1560 egg strain pullet chicks Comparison were made between groups of chicks fed: (1) all-mash; (2) all-mash plus grit; (3) mash plus oats; and (4) mash plus oats plus grit.

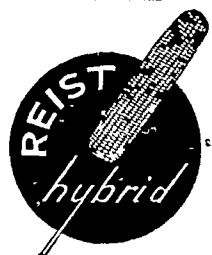
In all cases the birds receiving insoluble grit achieved better weight gains and with a better feed conversion rate.

USDA inspectors, during the first year of mandatory poultry inspection, certified as wholesome more than 4.7 billion pounds (ready-to-cook) weight of poultry.

DEAD ANIMALS REMOVED PROMPTLY

Will Pay Full Value For Dead Animals Dealers in Bones, Tallow and Hides
FRY'S RENDERING WORKS

Prop., John Fry
2114 Hollinger Rd.
Lancaster
Ph. EX 2-4815 If No Answer Ph. EX 7-0472



Pa. 820 Corn

A high population variety

Yields up to 160 bu. per acre have been recorded.

- 1 Stands up when others lodge
- 2 Withstands drought
- 3 Has a very strong stalk
- 4 Good resistance to corn leaf aphid and corn borer
- 5 Responds to thick planting and high fertilization
- 6 Low uniform height ears
- 7 Drier at harvest time than other varieties.

REIST SEED COMPANY

MT. JOY
Ph. OL 3-3821

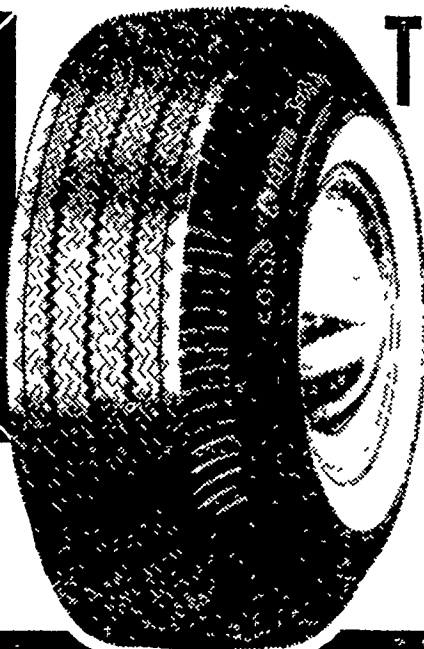
ANNOUNCING: EASTERN STATES

is in the

TIRE BUSINESS

LIFE-OF-TREAD GUARANTEE
on car and truck tires
Plus all-road-hazard Guarantee on car tires
No time limit

5-YEAR GUARANTEE
on tractor tires



Let Eastern States take the risk and confusion out of your tire purchases. You'll get First Line co-op tires, plus complete service . . . backed by Eastern States reputation for top value-in-use. Eastern States co-op tires for your passenger car, truck or tractor meet the most rigid use and safety tests. Now you can get First Line tires . . . co-op tires . . . co-op service . . . and co-op savings.

Eastern States FARMERS' EXCHANGE



LANCASTER EX 4-3755

QUARRYVILLE ST 6-3647

OR YOUR LOCAL REPRESENTATIVE