

This Week

(From Page 4)

of the States by the high federal income tax rates. Senator Blakley, of Texas, has introduced a bill to return to each State (to be used for educational purposes) 5% of the Federal Income Taxes Collected within the State during the preceding fiscal year. Senator Colwater, of Arizona, recommends reducing Federal taxes of individuals in connection with the State Tax they have paid for educational purposes. This would improve the ability of the States to collect revenue for education.

We are certain that the best of educational opportunities for our youth can be provided without sacrificing local control and responsibility, if we approach the challenge courageously and with dedication and determination.

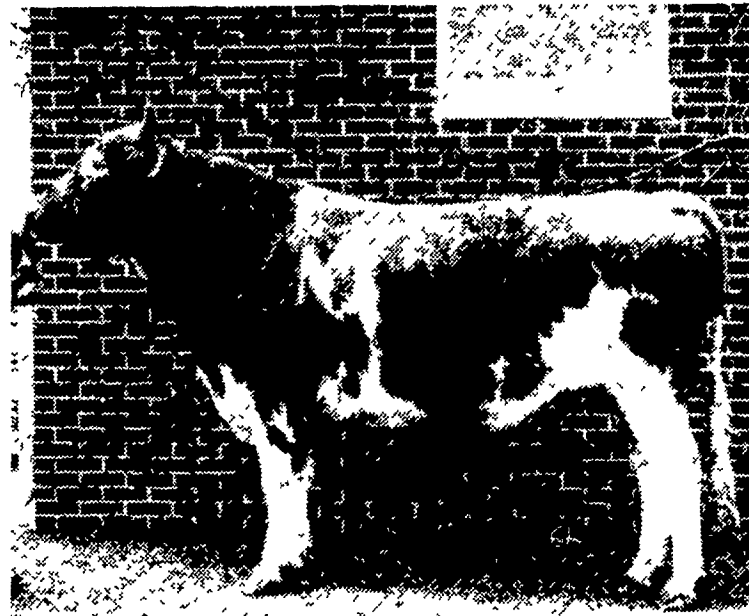
Federal Aid Rejected

Recently, Pepperdine College, because of its convictions,

rejected Federal financing for dormitory construction and chose to meet the needs of the increased student body by relying on private bond issues. It hoped to encourage others to rely on their own resources and initiative rather than resort to the sometimes easier but infinitely more potentially hazardous route of Federal Subsidization. Only such action directed toward the traditional American course of self-reliance and independence can halt the present trend toward the proliferation of Federal control and supervision and pass intact our free institutions to succeeding generations.

As a general rule, the farmer's share of the food dollar declines as the amount of processing increases. Not so for oranges. The grove owner receives 32 cents of the dollar spent on fresh oranges, 38 cents of the dollar for canned orange juice, and 43 cents of that for frozen orange juice concentrate.

Guernsey Bull Added To Stud At S.P.A.B.C.



IDEAL'S PATTY'S SUPERIOR, the latest addition to the Guernsey stud at the Southeastern Pennsylvania Artificial Breeding cooperative, has been leased from Rutter Brothers, York, according to Herman Stebbins, chairman of the Guernsey Sire Selection Committee.

The addition of the Guernsey sire, Ideal's Patty's Superior 522908, has been announced by the Sire Selection Committee of the Southeastern Penna Artificial Breeding Cooperative.

To be known to members as SG57 Superior, the sire has been leased from Rutter Bros of York, Pa. Committee Chairman Herman Stebbins, R-5, York, said the bull's services will be available in the near future from S.P.A.B.C.

According to his S.P.A.B.C. proof, Superior has 10 daughters with 10 records which average 11,472 lbs. of milk, 4.8% test, and 555 lbs of butterfat. All ten daughters exceed their dams in milk production and eight produced more butterfat.

His dam is Ideal's L D Patty, who completed class-leading records for both milk and butterfat with her senior-three-year-old record of 21,139 lbs. of milk and 1,114 lbs. of butterfat, milking three times daily for 365 days.

Successful Dairyman Says:

"Farm Bureau's DARI-PAK Program Right For Me"

Francis Kirk, Peach Bottom, R.D. 1, is feeding his entire herd of "70" Guernseys, Farm Bureau's 14% DARI-PAK.



He especially likes:

1. PALATABILITY of Dari-Pak - - my cows really go for it!
2. MILKMAKING POWER of Dari-Pak - - milk production good!
3. GRAIN EXCHANGE PROGRAM - - retail price for my grain!
4. BULK DELIVERY - - I like the discounts & convenience, too!

Get the exciting details of Farm Bureau's new popular DARI-PAK — you'll like the many advantages of our feeding program. Two modern feed manufacturing plants (New Holland & Quarryville) assure prompt delivery of quality "mill fresh" feed. Two protein levels, 14% and 16%, now available in this tasty coarse textured ration.

START TODAY... FEED THE FARM BUREAU WAY!

Qualified FIELDMEN are anxious to serve and assist you in designing a PROFITABLE DAIRY FEEDING PROGRAM.



For Prompt, Courteous Service,
In Bags or Bulk. Call . . .

Lancaster EX 4-0541	Manheim MOhawk 5-2466
New Holland ELgin 4-2146	Quarryville Sterling 6 2126

● DHIA

(From Page 1)

Gilmore, extension dairy specialist and coordinator of the statewide DHIA program, said 182,000 cows on 5,770 farms are under test for milk and butterfat production records. Both are new high figures.

DHIA he explained, serves as a mass demonstration of scientific dairy farming, stressing particularly improved management and latest technology also in feeding and breeding.

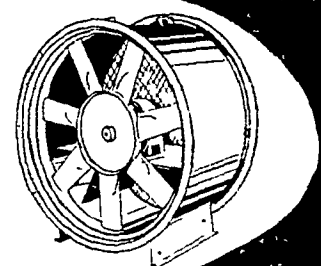
Records on production, Gilmore said, permit feeding according to ability to produce, and culling low producers.

These practices are reflected in higher average production—10,558 pounds of milk per cow as compared to an over-all state average of 7,700.

Gilmore told the State DHIA group that expansion of this program to more of the state's 38,000 dairy herds could "vastly improve" Pennsylvania's total dairy program.

Crop production is 56 percent higher per acre than it was 40 years ago. Output per breeding animal is 31% greater.

Dry hay and grain
the SURE way



with a

**McDade
DRYING SYSTEM**

PORTABLE, direct-drive fans dry hay and grain to safe moisture level in days—with or without heat. Save the valuable leaves on your hay crops; eliminate losses in stored grain 2 sizes. Ask for specs and prices.

Ask for information and prices on hay conditioners, crop drying fans and supplementary heat units.

BE SURE OF GOOD HAY
TOBACCO and GRAIN
THIS YEAR!

L. H. BRUBAKER

350 Strasburg Pike - Lanc.
R. D. 3, Lititz, Pa.
Ph. Lanc. EX 7-5179
Strasburg OV 7-6002
Lititz MA 6-7766