

Grain Program for County Explained

Each cooperating farm under the 1961 feed grain program will have a "permitted acreage" for corn and grain sorghum, according to Lantz G. Becker, Chairman of the Lancaster County Agricultural Stabilization and Conservation Committee. This "permitted acreage" will be the largest acreage of corn and grain sorghum that may be produced on the farm in 1961 in order for the farm to continue as a cooperating farm. Under the feed grain pro-

gram, the producer of corn or grain sorghum agrees to divert acreage formerly planted to these crops to a conservation use, for this diversion, he receives a special payment, and he qualifies for price support on the normal production of his 1961-crop corn and grain sorghum acreage. He also becomes eligible for support on other 1961-crop feed grains—barley, oats, and rye.

Chairman Becker explained that the program calls for diversion of at least 20 per cent of the "farm base" to an approved conservation use (The farm base is established by the county Agricultural Stabilization and Conservation committee from the acreage on the farm used

for the production of corn and grain sorghum in 1959 and 1960). The farmer may also divert additional acreage under the program up to a farm maximum, which depends upon the size of the farm base.

Payments under the program will also vary according to the size of the farm base and the relative productivity of the farm acreage.

Farmers who wish further information about the 1961 feed grain program are urged to get in touch with the county ASC office. Applications will be accepted after payment rates have been established for each farm, about April 17th.

● DHIA

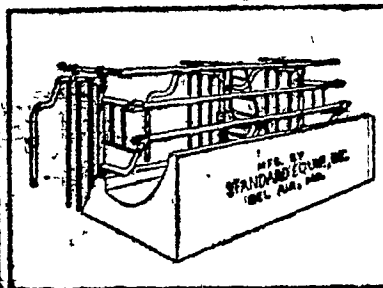
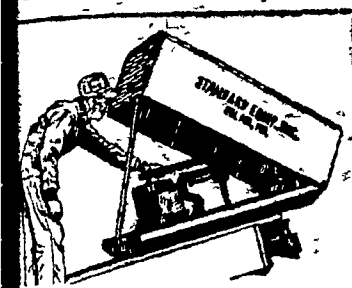
(From page 7)

designated to work with the University in setting up the proposed fellowship fund.

The fund proposal was referred by the association to the five central cooperatives at Lewisburg, Clarion, Tunkhannock, Lancaster and Allentown for their endorsement and implementation. Funds would be provided by adding one cent to the fee for each of the nearly one-half million cows serviced in this breeding program.

The fellowship fund will honor the memory of Mr. Olmstead who helped to establish dairy artificial breeding in the state. He was quick to sense this program is an economical means for mass herd improvement thru use of superior sires. He supplied educational leadership and the work had almost phenomenal growth throughout Pennsylvania.

BIG SAVINGS!!!! STANDARD EQUIPMENT'S BIG SPRING DISCOUNT BARN CLEANERS and COMFORT STALLS

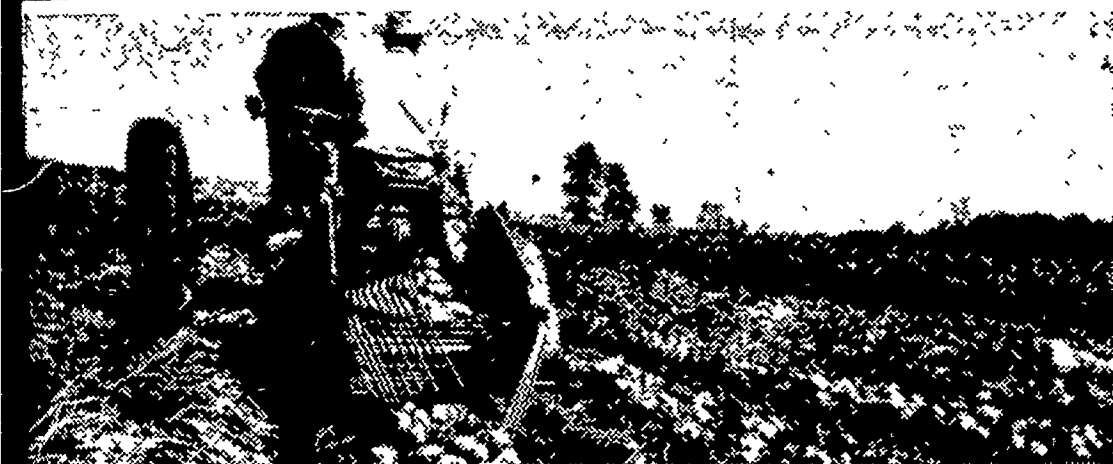


POWERFUL-MOVE BARN CLEANER **EASY-ALL COMFORT STALL**
Discount Changes: Mar 14, Apr. 15, May 16, May 31st
See Your Standard Dealer Today. Do Not Delay.

COPE & WEAVER CO.

WILLOW STREET

Ph. Lancaster EX 3-2824



You get a bigger yield of better quality potatoes when soil insects are controlled with aldrin.

POTATOES:

One application of aldrin can protect potatoes against all major soil insects for the growing season

Aldrin offers one shot, low-cost control of pests that reduce yield and make culls out of salable product.

Read how aldrin can help bring you bigger, healthier yields.

SEVERAL major soil insects attack potatoes in various stages of growth. All cause serious damage.

A single application of aldrin made as an over-all treatment before planting controls them all for an entire growing season.

Aldrin protected potatoes consistently average enough extra bushels per acre to pay for the application many times over. What is more important, they grade better.

Use aldrin this year to insure better potato yields, and improve tuber quality.

Aldrin is available from your insecticide dealer under well-known brand names. It comes in liquid, wettable powder and granules—and in fertilizer mixes.

Shell Chemical, Agricultural Chemicals Division, 2299 Vauxhall Rd., Union, New Jersey.

Shell
Chemical
Company



Agricultural Chemicals Division

Potato Growers: Aldrin is available in liquid, wettable powder, granules or have it mixed in your fertilizer at our Ephrata, Pa. Plant. Save time, labor and money with one easy application.

CONTACT YOUR NEAREST MILLER DEALER OR



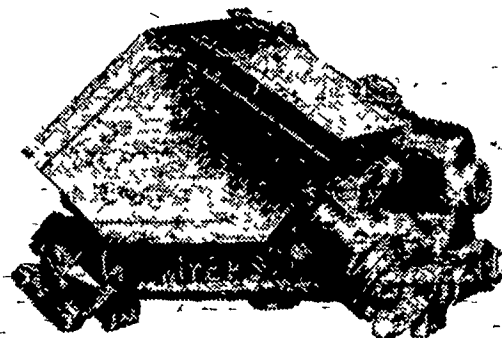
Miller Chemical & Fertilizer Corporation

P. O. BOX 25, EPHRATA

Phone RE 3-6525

FARM FIRE LOSSES HIGH 000,000 in 1959—highest on Farm fire losses in the U. record. About 81 per cent of S. reached an estimated the aggregate loss payments \$165,000,000 in 1960 This by insurance companies re- is about 5 per cent less than sulted from fire and about 19 the estimated loss of \$174- per cent from lightning.

TOUGH SPRAYING JOBS MADE EASY with the MYERS DU-ALL PLUNGER TYPE SPRAYER PUMPS



Will Handle ANY Material!

AVAILABLE WITH BOOM OR BOOMLESS

- 6 g.p.m. Capacity
- 12 g.p.m. Capacity
- Pressure up to 300 lbs.
- Pressure up to 500 lbs.

EXCELLENT AS A REPLACEMENT PUMP ON YOUR PRESENT SPRAYER

Complete line of Sprayers to fill any of your requirements, including good used Pumps, P.T.O. Sprayers of various makes and sizes. All rebuilt and guaranteed.

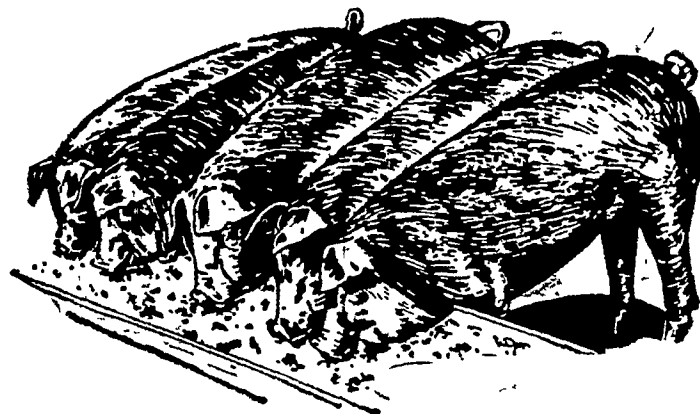
LESTER A. SINGER

Lancaster County's Only Dealer Specializing in Sprayer Sales and Service

RONKS, PA.

Phone Strasburg OV 7-6712

FOR GROWING SHOATS AT LOWER COST



Feed Wayne PIG BALANCER

Synco-Zymic formulation properly balances farm grains for fast, low-cost growth from 50 to 100 lbs. Arsanilic acid-antibiotic complex improved again for even faster gains on less feed!

Hygromycin for Worm Prevention Optional

Start now to lower costs with Wayne PIG BALANCER

SEE YOUR LOCAL WAYNE DEALER TODAY!



H. M. STAUFFER & SON'S, Inc.
Witmer - Ronks - Leola

HERSHEY BROS.
Reinholds

ROHRER'S MILL
R.D. 1, Ronks

J. K. STAUFFER & SON
Lawn & Bellaire

GRUBB SUPPLY CO.
Elizabethtown

ROSS C. ULRICH, JR.
R.D. 2, Peach Bottom

MILLERSVILLE SUPPLY CO.
Millersville

SUNSHINE FARM SUPPLY
Lititz & Newmanstown

MOUNTVILLE FEED SERVICE
R. D. 2, Columbia

LIME VALLEY MILLS
R.D. 1, Willow Street

C. E. SAUDER & SONS
R.D. 1, East Earl