

At Lancaster Yards

Trading Slow But Steady

CATTLE: 4200 compared with 4233 last week. Supply included about 50 per cent slaughter steers and 40 per cent stockers and feeders. Trading was slow. Slaughter steers sold 25-50 lower. Cows, 25-50 higher. Bulls steady. Stockers and feeders steady.

Slaughter Steers: Choice 1000-1250 lbs. 25.50-27.25, Good to low-choice 23.50 - 25.50, Standard 20.50-23.

Cows: Cutter and utility 16.75-18.50, canners and low cutters 15.75-16.75, shelly carcasses down to 13.

Bulls: Utility and commercial 19-22.50, good grade up to 24.50.

Stockers and Feeders: several loads good and choice 700-900 lb feeder steers 24-26, 600-750 lbs 26-28, choice stock calves 27-30

Calves: 650 compared to

715 last week. Trading was moderately active. Vealers were 1 lower. Good and choice were 28-34, choice and prime 34-39, few 40, standard and low-good 20-28, utility down to 17.

Hogs: 1900 compared to 1823 last week. Trading was moderately active. All classes were steady.

Barrows & Gilts: U.S. 1-2 190-230 lbs. sold for 19.25-20, several lots no. 1 190-225 lbs. 20.25-21. 1-3 190-230 lbs. brought 18.75-19.25 230-250 lbs. mostly 2-3 grade 18.25-18.75.

Sows: U. S. 1-3, mostly 2-3, 300-600 lbs. sold at 12.50 - 16.00.

SHEEP: 225 compared with 252 last week. Spring slaughter lambs were steady. Choice and Prime 60-80 lb spring slaughter lambs made 25.00-29.00.

Vintage Livestock Steers Sell 25-50 Lower

Compared with last week's market, slaughter steers 25-50 lower at the April 11 auction at Vintage. Utility cows steady. Canners and Cutters 25-50 higher. Bulls 50 higher. Receipts included 484 cattle.

Bulk of the Choice grade slaughter steers 25.50-26.50, few to 27.00, Good to low-choice 23.25-25.00, Standard down to 20.50.

Cutter and Utility cows 16.75-18.10, Canners and low-Cutters 15.50-16.75, shelly Canners down to 13.50. Utility and Commercial bulls 20-23.

CALVES: 322. Choice and Prime vealers 1.00-2.00 lower. Good grade and below steady. Good and Choice vealers 29.00-34.00, Choice and Prime 34.00-39.50, Standard and low-Good 22.00-29.00, Utility down to 19.00.

HOGS: 147. Barrows and gilts 25 higher Lot 195 lbs. U. S. no. 1 21.35, two lots 200-227 lbs. no. 1 19.50-19.60, also lot 166 lbs. 19.50. 1-3 201-225 lbs. 18.60-19.35. Several lots 163-178 lbs mixed Medium and no. 1 18.00-18.35 Two lots 237-239 lbs. 2-3 18.35-18.75. Lot 256 lbs. no 3 17.50.

SHEEP: 30 Few Choice & Prime 50-90 lb. spring slaughter lambs 26.00-29.00

New Holland Higher On Less Quality

Compared with last week's market, slaughter steers at the April 13 auction at New Holland sold strong to 50 higher with lesser quality considered. Cows were 50 higher, bulls steady. Receipts included 899 cattle.

Bulk of the choice grade steers made 25.50 to 26.60 with a few to 27.10. Good to low choice were 23.50 to 27.75 with standard down to 21.00.

Cutter and utility cows were 17.75 to 18.60. Canners and low cutters made 15.75 to 16.75 with shelly canners down to 13.00.

Utility and commercial bulls brought 20 to 22.75. A few lots of good grade 636 to 897 pound feeder steers sold for 22.50-23.50.

Calves 241. Vealers sold steady with good and choice vealers bringing 29.00-35.00. Choice and prime crossed the block at 35.00 to 39.50 Standard and low good made 24-29 with utility down to 21.

The April 12 sale of dairy cattle had receipts of 116 cows, eight bulls and 18 heifers. All classes continued about steady.

Fresh cows, Holsteins - \$300-375, Guernseys - \$175-240, other breeds - \$175-275. Stock bulls - \$110-210 Stock heifers - \$75-150.

Receipts of 218 head were on hand at the April 10 sale of horses, ponies and mules. The market continued about steady with some improvement seen in the saddle horse market.

Mules, pairs - \$300-450, singles - \$130-225. Ponies, mares - \$110-160, Geldings - \$55-110. Riding horses - \$130

Chicago Cattle Receipts Lowest Since January

WEEKLY REVIEW, CATTLE—Receipts slightly reduced and local receipts smallest for any week since early January. Almost two thirds of weeks supply arrived on Monday.

As compared with last Friday, average choice to prime steers fully steady, low choice and below steady to 25 lower, heifers weak to 23 lower, cows steady to 25 lower or decline largely on canner cutter and utility, bulls 23 higher, vealers steady, hardly enough stockers & feeders on sale for a price test, few sales around steady.

Bulk prime and mixed choice and prime 1000-1475 lbs 26.50-28.25, with most sales at the close 27.00 up and several loads prime 1125 - 1325 lbs. 28.15-28.25. Bulk choice 900-1400 lbs 24.50-26.75 with most sales 25.00 up at the close. Good steers largely 1300 lbs down 22.25-24.25.

Few high choice and mixed choice and prime 900-1150 lb. heifers 25.50-26.00, Two loads mixed choice & prime 1100 and 1156 lbs 26.00 bulk choice 24.25-25.50 largely 24.50 up at the close. Choice vealers 25-32, few prime 33.

Few loads and lots good choice 700-960 lb. feeding steers 23.00-24.00.

Best Food Buys Look For Bargains This Week

Seasonal produce items will attract the budget-conscious foodshopper this week. Grocery and meat items enjoy some post holiday dullness, reports Tom Piper, Penn State Extension Marketing Agent.

Shipments of celery and Iceberg lettuce have been running heavier than usual and prices have slipped down. More vine-ripened tomatoes are appearing at local markets and prices are somewhat lower. Eggplant, cucumbers and peppers are priced slightly lower than a week ago. Asparagus, new cabbage, radishes, leafy green salad items, and green beans are reasonably priced.

Spring onions are arriving from New Jersey, Arizona

and the Carolinas; first of season high prices prevail. Bad weather has hindered harvesting operations and forced prices up on carrots, sweet corn and new crop cooking onions. Cauliflower and spring peas are wearing high price tags. Old crop potatoes are expected to show some price increases soon. The new crop is starting out of Florida and crop estimates indicate more favorable prices in later weeks.

Meat departments give promise of a buyer's choice of values. Features will vary from store to store and may include poultry, turkey, beef steaks and assorted pork items. Bacon, smoked hams, picnics and loin cuts may be included in this list. Large size eggs continue on the list of good food values.

Two Changes In Stock Show Rules Announced

Harrisburg, Pa.—The Pennsylvania State Farm Show Commission has announced two changes in the Pennsylvania Livestock Exposition which is scheduled for November 6 through 10 in the Farm Show Building here.

The Commission approved plans to hold a feeder cattle show and sale at the Exposition, the first time that feeder cattle have been allowed in the beef, cattle, swine and sheep show.

(Turn to page 12)

Patronize Lancaster Farming Advertisers.

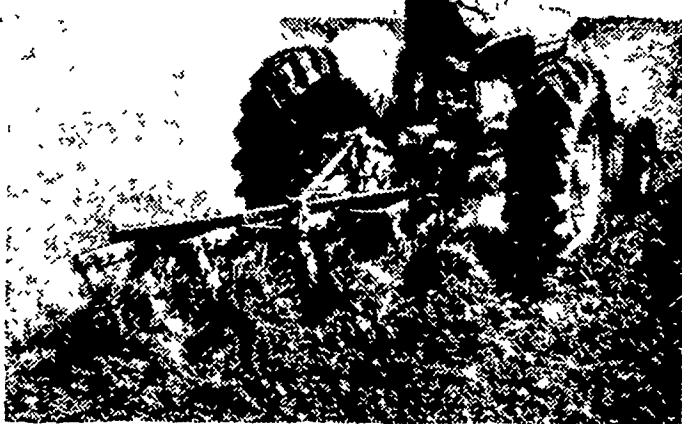
Here's What You Can Expect With

Non-Stop D-17 Plowing

- * 10 acres plowed in less than 5 hours
- * Only 1½ gallons gasoline per acre
- * Four 14-inch bottoms, 7 inches deep . . . oats stubble, sandy loam with clay

We have the whole story, including detailed results of this plowing test.

GET THIS KIND OF WORK ON YOUR FARM



Ask us about the Allis-Chalmers plan to finance your time purchase of farm equipment.

ALLIS-CHALMERS SALES & SERVICE

Mann & Grumelli Farm Serv. R. S. Weaver
Quarryville, Pa. Stevens, Pa.

L. H. Brubaker Lititz, Pa. **Nissley Farm Service** Washington Boro, Pa.

N. G. Myers & Son Rheems, Pa. **L. H. Brubaker** Lancaster, Pa.

Snavelly's Farm Service New Holland, Pa.

LOANS

FOR ANY FARM PURPOSE
MADE THE FARMER'S WAY

LANCASTER PRODUCTION CREDIT ASS'N

411 W. Roseville Rd.
Lancaster, Pa.
Ph. Lanc. EX 3-3921

HONEGGER Layers

Livability. General Vigor. Body Size. Conformation. Efficiency. Layability. Just Words? Not when you have HONEGGER LAYERS. They combine sound farm experience with the most advanced scientific methods to give you top poultry profits!

J. HOWARD MOORE, 307 East Second Avenue LITITZ, PENNA. Phone: MADison 6-5408

Windle's Hatchery
COCHRANVILLE, PA.
Phone: Atglen LY 3-5941

IT PREVENTS... ERADICATES

TOBACCO BLUE MOLD and WILDFIRE

Phytomycin*

Mathieson's new LIQUID antibiotic

- LONGER LASTING**
- EASY AND ECONOMICAL TO USE**
- SUPERIOR TO WETTABLE POWDERS BECAUSE:**
 1. Goes into 100% solution
 2. No caking—forms better, more uniform mixture
- SAFE TO PLANTS**

SEE YOUR DEALER

BOMBERGER'S STORE Elm	KAYLOR BROS. Rheems
DENVER SUPPLY CO. Denver	LANC. COUNTY FARM BUREAU Lancaster
ELIZABETHTOWN FARMERS SUPPLY CO. Elizabethtown	MARTIN'S HARDWARE Bareville
J. E. GALEN HARDWARE Lincoln	LESTER A. SINGER Ronks
N. G. HERSHEY & SON Manheim	WEST WILLOW FARMERS ASSN. West Willow

J. C. Ehrlich Chemical Co., Inc.
736 EAST CHESTNUT STREET
LANCASTER, PA. PHONE EX 7-3721