

USDA Advises Potato Growers To Cut Back

The U S Department of Agriculture today recommended that growers reduce their total acreage of summer and fall potatoes this year.

In issuing its acreage-marketing guides, USDA recommended specifically that growers:

—Cut acreage of early-summer potatoes by 2 per-

cent from last year;

—Make no change from last year in acreage planted to late-summer potatoes;

—Cut acreage planted to fall-crop potatoes 5 percent from last year.

If growers get average yields on the recommended 1,202,300 acres of potatoes, their summer and fall crops combined will total 213 million cwt. This would be four percent smaller than the '60 crop, but almost equal to the 1959 crop, according to the USDA report.

For all the potato-growing seasons of 1961 (adding win-

ter and spring to these summer and fall crops), USDA's recommended guides total 1,396,450 acres of potatoes, which is 4 percent smaller than 1960 plantings. At average yields, this acreage would produce a crop of 245 million cwt. — a marketing guide which is 5 percent less than last year's large crop.

The acreage - marketing guides are prepared and issued by USDA to help potato growers take the guesswork out of planning their production. This program is completely voluntary and growers make their own decision as to whether to plant according to the Department's recommendations.

Potato growers associations are conducting an educational campaign to acquaint

their members with the recommendations, and the desirability of following them. Any USDA surplus-removal assistance to potato growers in any State or area in 1961 will be conditioned on strict compliance with these guides the report said.

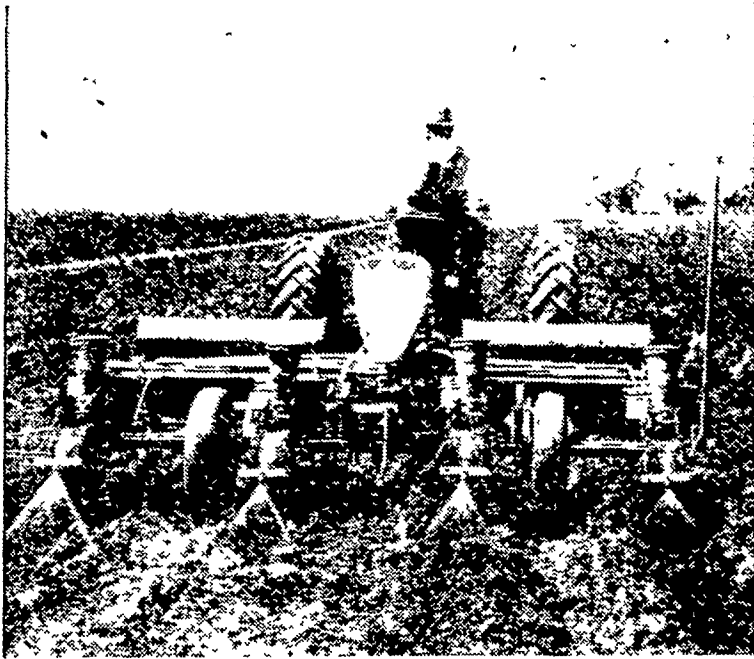
Lancaster Farming advertising brings results.



NYLON FASTENER

The Velcro clothing fastener consists of two ribbons of nylon, explains Mrs. Mae Barton, Penn State extension clothing specialist. One ribbon is fleecy and contains thousands of tiny loops, while small hooks cover the other ribbon. When the ribbons are pressed gently together, the hooks and loops cling to each other, and separate easily when ribbons are pulled apart. The fastener is sold in 9-inch strips and by the yard.

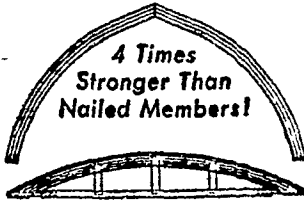
Herlandia Darky Glad Govern owned by Galen W Herr, Elizabethtown, produced 14,170 lbs. milk and 564 lbs. butterfat in 362 days on twice daily milking as a 5-year-old.



MANY FARMERS HAVE FOUND they get good control of broad leaf weeds as well as grasses in cornfields by spraying herbicides at planting time. During the rainy weather, long before planting time, some machinery dealers will offer specials on shop work. It is a good idea to have a spray outfit rigged up on the planter before planting time when shops will be crowded with seasonal work. The use of atrazine or smazine in a planter-mounted sprayer will save many trips over the field with the cultivator.

Advertisers will be glad to have you mention Lancaster Farming when answering advertisements.

UNADILLA Una-Lam LAMINATED WOOD ARCHES AND RAFTERS —



4 Times Stronger Than Nailed Members!

Banded by most modern structural glues. UNA-LAM framing members are prefabricated, ready to use and delivered to the jobsite... Save time, work, money! Provide maximum wind- and snow-load resistance, and more inside space too... no posts or supports needed! Ideal for barns, warehouses, schools, churches, auditoriums, etc. Get complete details now.

John S. Stoltzfus
R. D. 4, Box 742
Lancaster EX 7-0862
A product of UNADILLA SILO COMPANY Since 1906

REIST'S Sure Crop Seeds

ALFALFAS
Vernal
DePuit
Ranger
Buffalo
Grimm

CLOVERS
Pennscott
Kenland
Penna. Grown
Mammoth

HYBRID CORN DEVELOPED BY - PENN STATE EXP. STATION

Get our prices and save money
Alfalfas and Clovers innoculated while you wait.

REIST SEED COMPANY
MOUNT JOY, PA.
Phone OL 3-3821

Before You Buy Any Hay Machine



See The Meyer Hay Conditioner

J. PAUL NOLT
Lincoln Hwy., Gap, Pa.

Pennsylvania's All-Time RECORD CORN CROP

206.6

BUSHEL PER ACRE



Produced In 1960 By Funk's-G Hybrid Seed... On the York County Farm of J. E. Lanisus & Son.

FUNK'S G-HYBRIDS have done it again... won the 1960 Official Pennsylvania 5-Acre Yield Contest with a whopping record yield of 206.6 bushels per acre. And also—won 3rd and 5th highest yields in this statewide contest open to all brands.

This was the 4th time within the past 8 years that Funk's-G has produced the Champion-Yield. REAL PROOF Funk's-G superior breeding pays off in more corn at harvest time!

YOUR 1961 Corn Crop... if you want to make sure of more corn this fall... the finest upstanding, blight-fighting, higher-yielding corn... decide right now to plant Funk's-G seed this spring.

SEE YOUR LOCAL HOFFMAN SEED MAN OR PHONE TW 8-3421.

A. H. HOFFMAN SEEDS, INC., LANDISVILLE, PENNA.
Serving farmers with finest quality seeds since 1877

1941—20th Anniversary—1961

SPRING SALES PROMOTION

Now-Bigger Than Ever!

SAVE - Special Anniversary Prices

MANY—MANY SPECIALS

See Us Today!



Charles B. Hooper

INTERCOURSE

PH. SO 8 3501