

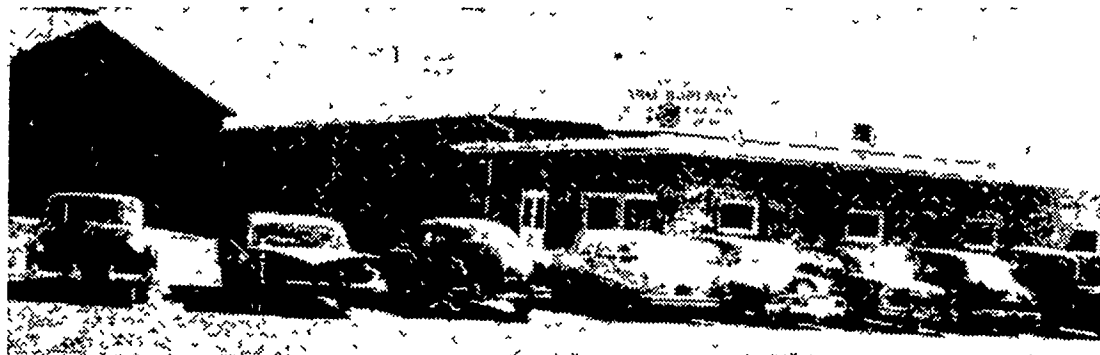
GRAND OPENING

QUARRYVILLE BRANCH

LOCATED AT 4th and HESS STREETS

LANCASTER CO. FARM BUREAU COOPERATIVE ASSOCIATION

Friday, April 7th — 7 a. m. to 9 p. m.



Come in and see our modern feed manufacturing facilities. Also see the modern, up-to-date custom grinding and mixing facilities with built-in storage for grains and ingredients. See the streamlined operation with automatic and labor-saving machinery to give fast, efficient service, and turn out the highest quality, thoroughly mixed feeds. Inspect your new off-the-farm facilities from top to bottom - mill - warehouse - office and display room.



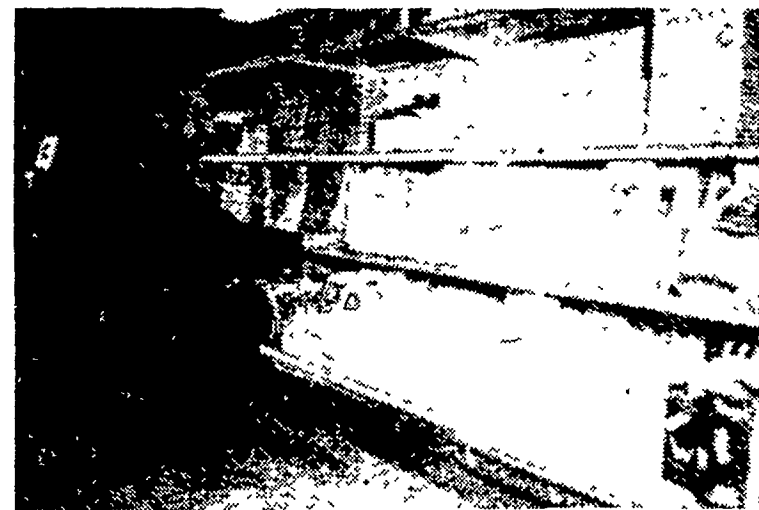
Park Shaubach, left, Barbara Hollinger and Richard Morrison, Branch Manager, are ready and eager to serve you in our new attractive office and display room.



Clair Shimp is shown loading a feed truck from the new warehouse. A larger and more complete inventory of popular Farm Bureau feeds and quality ingredients will result in improved service to our valued patrons.



Ellis Jones, left, and Samuel Kinsey beam with pride as they stand beside our New 5-TON VERTICAL MIXER - BLENDER. This modern Mixer - Blender, two 2-ton Vertical Mixers and two Hammer-mills combine to offer greatly improved service and increased capacity.



Park Shaubach, sales clerk, is checking the inventory of the popular Unico Sprays and Dusts. Park urges you to shop Farm Bureau for all your Farm & Home needs. Our new, large display room is fully stocked and ready for your inspection.

- ★ Valuable Door Prizes
- ★ Free Gifts For All
- ★ Guided Tours

10% DISCOUNT
ON FARM SUPPLY ITEMS
IN THE SALESROOM