

• Sale Register
(From page 13)

and Clay. F. Snyder, P. Snyder, P. Long, Aucts

March 21—Tues 12 Noon - Pub Sale of Farm Eqpt. 20 cows and HHG, by Paul Graybill, along the road leading from Lititz to Elm, North of Graybill's Dairy Shrener., Auct.

March 21—Tues. 1 00 p m Pub Sale of Farm Imp by W E Booher, 1 1/2 miles W. of Mountville along Route 30 Bradley, Auct

March 21—Tues 12 noon 26th Annual Big Spring Sale at Landis Valley, 3 mi North of Lancaster on R/e 222 by Ira S Landis E Spahr, Auctioneer.

March 23 — 12 00 noon - Pub sale of Farm Eqpt. & Household Goods, by Norman Forney, between Hess Mennonite Church and along Rothsville Road and Millway or one mi e N. of Rothsville Station Shrener, Auct

March 24—Friday 1-00 p m. Pub Sale of Dairy Cattle by Kenneth McCauley along the road leading from Chestnut Level to Liberty Square (1/2 mi. W of Chestnut Level). Bradley, Auct.

March 25—Sat 12.00 Noon Public Sale of Holstein Cows and Farm Equip. by Harry V. Keene, 1 mi w. of Quarryville, along the road leading from Quarryville to the Buck Kreider & Diller, Aucts

April 1—Sat. 11.00 a m, Penna. Third Quarter Horse Sale at Paul Z. Martin, Blue Ball. P Martin, Auct.

April 8—Sat. 2.00 p.m. - Pub sale of motel & apartments, seven miles west of Lancaster on Rt. 30. Estate of the late Harry M. Lichty Funk, Auct.

WASHER BUYING GUIDE

Look for a washer that lets you regulate water temperature and extraction if you plan to use an automatic washer for easy-care garments, suggests Helen Bell, Penn State extension home management specialist. If you use a fabric softener, a water conditioner, and a bleach, a wise choice may be a washer that dispenses them automatically.

ANY DAIRY FARMER

that reads this ad and is interested in putting on a few good Wisconsin milk cows to step up your milk production, please drop us a card right away giving your name, location and telephone number and we will contact you right away at your farm

Look your herd over and check them over closely and cull out your bee. to make room for good cows. We have a very good market for your culls and any kind of beef cows that you might want to trade. We are receiving 2 to 5 trailer loads a week from Wisconsin. Delivery can be arranged for most anywhere in Pennsylvania right to your farm. If you would prefer to take a drive over to our cattle farms take the Penna Turnpike which leads on to the N. J. Turnpike then get off at N. J. Exit no 5. turn right towards Mount Holly, and stop at first gas station and telephone us and our fieldman will come and lead you over to our cattle farms. Our cattle farms are located on each side of Highway 206, 1 1/2 miles this side of Vincentown, N. J. or about 6 miles from N. J. Turnpike Exit no 5. Look for eight silos, 4 silos on each side of highway, also telephone us the night before for an appointment to meet us

I. GREENBERG & SON

Route 206
Mount Holly, N J
Telephone.
Mount Holly, N J
AMherst 7-1101

PUBLIC SALE

—OF—

Livestock & Farm Equipment

Saturday, Mar. 18, 1961

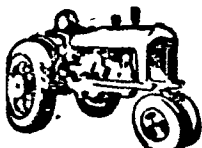
AT 12 NOON SHARP

The undersigned will offer at Public Sale on the premises located 1/4 mile west of Mastersonville, Lancaster County, Penna. (Look for sale signs).

20 HEAD OF LIVESTOCK

consisting of 16 Holstein Cows (This herd is mostly all young cattle with good size, area T-B tested, and health charts) and 4 heifers (all bred).

3 Tractors



1951 JOHN DEERE A; 1950 JOHN DEERE M-T with cultivators, tobacco hoers, and 2-bottom John Deere plow, and JOHN DEERE L with cultivators, tobacco hoer, and plow John Deere No. 45 manure loader(used very little), two rubber tire wagons with flats and tobacco ladders, New Idea corn picker, John Deere manure spreader on rubber, John Deere No. 44 plow with power troll, John Deere harrow, John Deere 7 ft. grass mower, Ontario 12 disc grain drill (used 3 years), 2-90 John Deere corn planter, New Idea hay rake, 9 ft. Leroy cultipacker, Mulkey bale elevator, 2 row Stauffer tobacco planter (like new), John Deere #28 disc harrow with 20 in. discs, lime drill, Dobbins portable 20 gal. sprayer, lots of metal fence posts. three electric fence chargers, ensilage carts, Mist fly sprayer, forks & shovels, 4800 tobacco laths.

1947 DODGE PICK-UP TRUCK with calf rack.

10 TON EAR CORN

MILKING EQUIP. — 18 milk cans, 2-unit DeLaval milker with piping for 16 cows, DeLaval hot water heater 4-can Kelvinator milk cooler, 6-can milk rack, wash tubs, buckets & strainers

CHICKEN EQUIP. — 375 Leghorn Chickens (2 years old), 3 range shelters, Whirl-a-way egg washer, 2 range feeders, and Jamesway brooder stove.

Monarch coal range, Estate coal heater and Duotherm oil heater. Many other items too numerous to mention.

Farm Sold.

This is a complete Dispersal Sale if in need of any Good Cows and Farm Implements don't miss this sale.

Sale to begin at 12 Noon when terms and conditions will be made by:

Earl Shenenberger

Rufus Geibe & Clyde Wolgemuth, Aucts.
Faus & Faus, Clerks

Refreshments will be sold by the Ladies Auxiliary of the Mastersonville Fire Company.

Public Sale

—OF—

Full Line of Farm Equipment and Household Goods.

Tuesday, Mar. 21, 1961

12:00 SHARP

The undersigned will offer at Public Sale on the premises located along the road leading from Lititz to Elm, north of Graybill's Dairy the following:

20 HEAD COWS

Some Fresh and Close Springers

FARM EQUIPMENT

Oliver 88 with Hydra Letric Control-Live Power Take Off, 3-bottom Raydex Plow on rubber, Oliver 66 with Hydra Letric Control Cultivator 2 row Tobacco Hoer Attachment Farmall No 109 2-row Corn Panter with fertilizer Attachment, Oliver Wheel Disc No. 241—used 2 seasons Oliver Mower, McCormick No 52 Heavy Duty Dump Trailer New Holland 68 Baler with Power take off New Holland Manure Sreade—used 2 seasons with Forage Box 2 row Heshy Tobacco Planter, Allis-Chalmers Side Delv ery Rake with No. 2 Speed Tedder & Power take off Tandem Whees, Cunningham Hay Crusher, New Idea Harvester Shredder—used one season, McDeering 7-13 Grain Drill Mulcher, 3-Section Roller Harrow, Mulkey Hay Elevator Weed Sprayer, Ensilage Cutter with Shredder Bars and Pipe, Trexler Potato Cutter with motor, 15 ft Water trough Horn Manure Loader, two Weeders;

Hammer King Hammer Mill, New Holland Corn Shelter, two rubber tire Wagons with Beds, McDeering Heavy Duty Truck, 550 Gal. Water Tank, three Tobacco Wagon — one with rubber; two Allis Chalmers Combines — one with motor; Potato Digger, three Clay Corn Ducts, 10' Ward Walking Plow, two shovel Harrows; Tobacco Presses, 8500 Tobacco Lath McDeering Milker, Buckets, Strainer and Tubs, Feed Cart, 75 ft. High Pressure Hose with Gun, two Extension Ladders, Hog Troughs, Anvil and some Blacksmith Tools, Forks Shovels, Chains, Fence Stretcher Hemco Egg Washer, Grader and Baskets, Storm Sash.

25 TON CORN

Also the following

HOUSEHOLD GOODS

3 pc Bedroom Suite, Old fashioned Spool Bed, Dry Sink, three Mattresses, two Living Room Suites, three 9x12 Axminster Rugs, one 12x15 Rug, Dining Room Furniture Frigidaire Refrigerator Frigidaire Stove, two Oil Space Heaters, Estate Heatrola, Extension Table with 3 Boards Extension Table with 10 Boards, Rag Carpet, Miller Organ in Piano Case, Roll-top Desk, Copper Kettle and Iron Kettles.

Terms by

HENRY SHREINER, Auct.
ERB & DIEHM, Clerks

Paul Graybill

Refreshments — Farm Women No. 5

Public Sale

Sat., Mar. 18, 1961

On the premises in Warwick Township, one-half mile east of Route 501, on road leading to Rothsville, at Kissel Hill, the following:



16 Head Holstein COWS

Blood tested and T B accredited, some fresh by day of sale and close springers.

SHOATS

Farming Implements

JOHN DEERE "B" TRACTOR with hydraulic lift, JOHN DEERE "40" TRACTOR with 3-point hitch, cultivators and plows; John Deere 13-disc gain drill, J-D 24-disc harrow, McDeering corn planter, John Deere 7 foot mounted grass mower, New Idea s.de rake, Bemis tobacco planter, low down steel-wheel wagon, two sets tobacco ladders, New Idea manure spreader on rubber, roller, rubber-tired wagon with bed, 3 section spring harrow, two Minnich tobacco presses, 5500 tobacco lath, stripping room stove, corn sheller with motor, rubber-tired wheelbarrow, platform scales, 1/2-mch electric drill, electric emery wheel, grease guns tools, garden tools, forks, rakes, log chains, locust posts, 10 tons ear corn, brooder house, two range shelters, chicken equipment, 2 unit Surge milking machine, 12 milk cans, buckets, strainer, 4 can electric milk cooler, wash tubs, milk can rack, extension ladder, power mower, 3/4 International pickup truck with cattle rack.

Household Goods

10-piece waterfall dining room suite, chest of drawers, plate enamel range, etc

Sale at 12 noon. Terms by

Parke S Shaub, Auct.
Howard Erb, Clerk

J. ROBERT PETERS

Refreshments by Ladies of Hess' Mennonite Church

PUBLIC SALE

—OF—

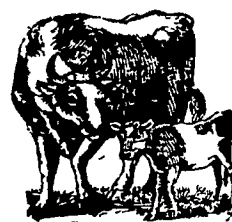
Holstein Cows AND FARM EQUIPMENT

Sat., Mar. 25, 1961

Will be offered at Public Sale on the premises of the undersigned, located one mile west of Quarryville along the road leading from Quarryville to the Buck in East Drumore Township, Lancaster County, Pennsylvania, the following Livestock, Farm Equipment and Household Goods, to wit:

LIVESTOCK

10 Head OF Dairy Cows



Nine Holsteins and one Guernsey, in all stages of production. Health charts will be furnished.

FARM MACHINERY

Three Tractors

One a FORD TRACTOR, with 2-Bottom Mounted Plow One FARMALL "A" TRACTOR with Cultivator; the other a GARDEN TRACTOR.

Tractor Manure Spreader

Drill; Harrow, D c: Side Delivery Rake; Wagon; Hammer Mill; Fodder Sh edder; Tobacco Planter Lath; John Deere Corn Planter, with 3-Point Hook up, Extension Ladder, CORN ON THE EAR.

DAIRY EQUIPMENT

MURGE MILKERS; MILK COOLER; Cans, Water Heater Tubs, Etc

OUTBOARD MOTOR

GUNS:

12-Gauge Pump; 22 Semi-Automatic; Old 41 Swiss Rifle (good condition), and others; Home-made Solid Walnut Gun Cabinet.

HOUSEHOLD GOODS

CHINA CABINET; CHROME KITCHEN SET; Almost New Twin Beds; Spool Bed; ELECTRIC STOVE; Bureaus Old Picture Frames; Mirror Shadow Boxes; Birds and Bird Cages, and many other articles not mentioned.

Sale to begin at 12:00 Noon (sharp), on Saturday, March 25, 1961, when terms will be made known by

J. Everett Kreider and Carl Diller, Aucts.

Harry V. Keene

(Lunch by the Mechanics Grove Church of the Brethren)