

A registered Guernsey cow, Masonic Homes Man O'War, owned by Kitty, a six year old registered P Polly, owned by Rohrer Witmer, Willow street, has completed an official DHIR production record for 12,100 pounds of milk and 560 pounds of fat a seven year-old on 2x 05 days.

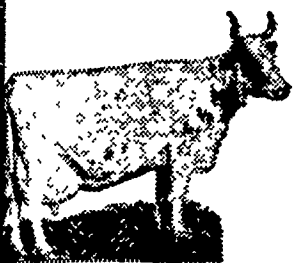
For the Most Markets Read Lancaster Farming

# Public Sale

## DAIRY CATTLE

**Fri., Mar. 24, 1961**

Along road leading from Chestnut Level to Liberty Square (1/2 mile West of Chestnut Level) Drumore Township, Lancaster County, Penna.



## 31 Head Guernsey Cattle

28 HEAD MILK COWS

8 fresh, 8 close springers, some milkings, others fall cows.

2 SPRINGING HEIFERS

1 STOCK BULL

Herd TB and blood tested. Health charts for each cow. This is a herd of good young cows and deserves the attention of farmers interested in Guernsey Cattle.

Also Milking equipment including:

Two-unit seamless, stainless steel Milker and Pump; Cans, Buckets, and Strainers.

Sale at one o'clock by

Kersey Bradley, Auct. **Kenneth McCauley**

Lunch by Chestnut Level Women's Association.

# PUBLIC SALE

## Livestock - Farm Equipment and Household Goods

**Thurs., March 23, 1961**

12:00 SHARP

The undersigned will offer at Public Sale on the premises located between Hess Mennonite Church and Rothsville Road and Millway or one mile north of Rothsville Station the following:

4 PIGS - 3 Sows and 1 Boar

### FARM EQUIPMENT

Allis WD 45 Tractor with 3-bottom Plow, Super A with Cultivator, Fertilizer, Disc Plow, Weed Sprayer Vegetable Cultivator and Tobacco Hoer and Manure Loader Case Corn Planter, F. 20 Tractor with Cultivator, and Mow-er, Tiger Tobacco Planter, Case Disc Harrow, New Idea Manure Spreader, 3-Section Spring Harrow, Cultivator, Spike Harrow, Side Rake, Bale Elevator, MT 50 Hay Baler New Holland Potato Digger.

Case Ensilage Harvester, Int Blower with Mounted Motor and 50 ft. Pipe, three International Wagons—1 year old with Beds—sides for Ensilage, one Rubber Tire Wagon and 20 ft Tobacco Ladders, Tobacco Press, Shears, Spears and 50" Laths, New Holland Corn Shelter and 2-hole Shelter, International 10C Hammer Mill & Pate Mill Ensilage & Feed Ca.t., 1/2 ton Feed Mixer, 2-row Corn Binder with P.O. and with Bundle Elevator.

Rosenthal Corn Husker-Shredder, 500 Gal Water Tank mounted on rubber, 600 lb Platform Scale, Wheelbarrow, Hog Shelter, 10x15 ft. Brooder House 11 Range Shelves, 20 Chicken Coops, 35 - 10-hole Nests, V-Water Troughs Egg Washer, Keenco Egg Grader, 135 K. W Generator Maquette Welder, Torch & Table, One half inch Electric Drill, 6-in Emery Wheel, Electric Saw, Pipe Threader, Bolts and Die Set, Vise, Tools, Blacksmith Tools, Forge and Anvil, Log Chains, Stone Crusher, Single and Double Trees, Scalding Trough, Air Compressor, Int Milk-er—2 units with three buckets; 6 can Int Milk Cooler. 600 ft. in Plastic Pipe, 40 ft. Extension Ladder, G. and M. Work Table, Oil Pumps, Jacks, Bag Wagon, 75 ft 6 in Endless Belt, 125 Bushel Baskets, Ground Scoop, 1 1/2 HP New Holland Engine, Cross Cut Saw, Hot Bed Sash and three Power Mowers

Also the following

### HOUSEHOLD GOODS

Living Room Suite, one Davenport, Rugs, Cedar Chest, two Old Chests, Beds, Springs, Mattresses, Old Chairs, Rope Bed, Wash Stand, Dresser, Old-fashioned Cupboard, Old Settee, Crocks, Jars, Butcher Outfit, Iron Kettles, Tripod, and Copper Kettle.

Terms by

HENRY SHREINER, Auct **Norman Forney**

Refreshments - Middle Creek Sunday School Class.

## Auctions

ANGUS AUCTION, the annual "Heart of the Valley" sale March 22nd at the Purebred Livestock Sale Pavilion on Rt 11, just North of Staunton, Va. selling 100 head top breeding stock - 15 herd bulls featuring sons of Champions; cows with calves at side, bred and open heifers. Come watch the show in the afternoon of 4-H and FFA Club projects; get supper on the grounds, hear Senator Albert Gore, Angus breeder and nationally known figure from Tennessee talk on "What's Ahead for the Cattleman" at 6 o'clock; and stay for the sale beginning at 7 o'clock. There will be door prizes. Dave Cann, Manager. Box 1236, Staunton, Va. Phone 885-1271.

Stebbins Dispersal - Sat., Mar. 25 - 10 A.M. - between Whitesville and Andover - 91 top, outstanding Holsteins (20 Reg), more than 1/2 just fresh or close, balance bred back and really producing! Very nice young cattle! Herd tested for inter-state 3 Ford Tractors (861-850-960) and one of the best lines of modern equipment. All - new stainless dairy equipment: 700 gal. Solar Tank, 6 Surge units, etc. Worlds of good small tools. Excellent produce including 25T. fancy crushed hay (alfalfa and brome) - 300 bales 2nd cutting - large quantity silage. One of Allegany County's best farms' 210 A - excellent cultivation - 100 head dairy barn - good bldgs. - terms available. Write Rumseys' for complete listing. Owned by Mr. and Mrs. Dale Stebbins. Auction by Rumseys' - Of Course!!

## Sale Register

March 18—Sat. noon. Pub. Sale of Livestock and Farm Equip. by Earl Shenenberger 1/4 mi W. of Mastersonville. (Look for Sale Signs). R. Geib & C. Wolgemuth, aucts.

March 18—Sat 12 Noon, Public Sale of Holstein Cows, farm impls. and HHG, by J. Robert Peters, 1/2 mile East of Route 501 on road leading to Rothsville at Kissel Hill. Shaub, auct.

March 18 - Sat. 10 a.m. Boar show 1:00 p.m. Sale of Penna. Landrace Assn. State Show & Sale at Martin's Sales Stables, Bluc Ball. P. Z Martin, Auct.

March 20—Mon. 10:30 a.m. Pub. Sale of Farm Machinery and Poultry Supplies and tools, by El'is K. Martin, along Rt 322 between Lincoln

(Turn to page 14)

## PUBLIC SALE

TUESDAY, MAR. 21, 1961 - We will have our 26th Annual Big Spring Sale at Landis Valley, 3 miles north of Lancaster, on Rt. 222

M. M. Model BF Tractor & cultivator, AC Model G Tractor, wheel type 28 disc, Moline pickup baler, John Deere equipment: 12A combine with motor 101 corn picker, 13-disk grain drill, KBA 24 disk harrow, corn planter, 2-bottom plow, Oliver 3 bottom trip plow, Oliver PTO combine 3 nt hitch corn planter, Mc side rake, parallel bar side rake two 2-row Stauffer transplanters, bale elevator, roller packers, new 5-ton N. H. wagon with bed, storage box manure spreader combination, rotary hoe spike and spring harrows, lime spreader double tobacco ladders, Minnich press, tobacco lat, G M C V-license truck, truck scale, lumber, poultry equipment, shovels, rakes, brooms, hay and straw

WE SELL ON COMMISSION Sale starts promptly at 12 Noon.

Terms by:

IRA B LANDIS Elmer Spahr, Auct.

## ALL DAY SPRING SALE

FULL LINE FARM MACHINERY, POULTRY SUPPLIES AND TOOLS

**Mon., March 20, 1961**

10:00 A. M.

Along Route 322 between Lincoln and Clay.

By ELLIS K. MARTIN

3 Auctioneers, 5 Clerks.

WE SELL ON COMMISSION

EPHRATA RE 3-0183

## PUBLIC SALE

**Tuesday, Mar. 21, 1961**

Along Route 30, 1/2 mile west of Mounville, Lancaster County, Pa.

### FARMING IMPLEMENTS

FARMALL H. TRACTOR; JOHN DEERE A TRACTORS and cultivator, Oliver Radex 2 bottom plow; 3 section spring harrow cultipacker; corn planter; 11 disc grain drill; McDeering 28 disc, like new; New Idea 12A tractor, manure spreader New Idea 4 bar side rake mower; 15 ft aluminum grain elevator; 24 ft Smoker elevator; low wagon; rubber tire wagon; two sets tobacco ladders 20' and 25'; 2-row tobacco planter; tobacco hoers; Minnich baling box; platform scales; David Bradley garden tractor and cultivator; 12x15 brooder (aluminum roof); bag wagon; lumber, Electric cable; power mower; 250 gal. water tank; torks, shovels; tools;

150 CHICKENS (50 Leghorns - 100 White Rocks) 10 TON OF CORN

Numerous other articles

Sale at 1.00 P. M.

Kersey Bradley, Auct.

by W. E. Boohar

## PUBLIC SALE

### Motel and Apartments

**Saturday, April 8, 1961**

AT 2:00 O'CLOCK

The undersigned will offer at Public Sale on the premises located on Route 30, 7 miles west of Lancaster, adjoining St. Anne's Home.

Property with 120 ft. frontage by 200 ft. depth, consisting of.

**7-Unit Motel with Garages**

automatic oil heat,

**2 1/2 Story Brick House**

under slate roof consisting of 12 rooms—first floor apt with 5 rooms and bath, second floor apt. with 5 rooms, bath, and sun porch—with all conveniences and automatic heat; also apt. of four rooms and bath with automatic oil heat over 2-car garage under slate roof. These buildings are in good condition.

Persons wishing to view premises may do so from 1:00 P. M. to 9:00 P. M. on Thursday, March 30, or Friday, Apr. 7th.

Sale to begin at 2.00 o'clock when terms and conditions will be made known by

LOIS WILL

MARY KATHRYN ESHELMAN

Executrices for the estate of Harry M. Lichty, dec'd Edgar F. Funk, Auctioneer John W. Beyer, Attorney

## FARMERS and GARDENERS

One Stop Shopping for your Farm & Garden Supplies FARM HARDWARE

FARM FENCING - Get our spring discount prices on field fencing, poultry fencing, gates, barb wire, welded range shelter wire, nails, etc.

Lawn Mowers & Supplies

### BOTTLED GAS

Sales & Service RECONDITIONED GAS REFRIGERATORS

- LINOLEUM
  - ADDING MACHINES
- New & Used

### Gulf Fuel

Sales & Service Delivery of fuel oil, kerosene, gas and other fuel products throughout eastern Lancaster County.



### FARM & GARDEN SEED

TOBACCO MUSLIN 2, 3 & 4-yard widths



QUALITY PAINTS Reliable Service and Information on Inside and Outside Paints

Housewares & Dinnerware Complete Food Dept.

W. L. Zimmerman & Sons INTERCOURSE, PA.

Ph. Intercourse SO 8-3131

Country Auction Sale

March 18, April 1 & 15