

How Much Does It Cost? Custom Work Rates Estimated

HARRISBURG — What does it cost to plant an acre of corn in Pennsylvania? According to figures collected by the Crop Reporting Service of the Pennsylvania Department of Agriculture, on the rates of custom operators, the bill would come to \$10.60 an acre plus the cost of the seed and fertilizer.

Broken down, the average cost of plowing an acre of sod is \$4.15, discing is done for \$2.40 an acre, harrowing for \$1.95 and planting with a two-row planter for \$2.10. These custom costs figures are the average for the state and vary considerably with geographic regions. This is the first study of custom rates ever done in Pennsylvania. More than 400 custom operators participated in the survey of costs for normal custom jobs.

The most uniform rate within the state was the 10 cents a bale charged for the baling of hay and straw. Incidentally, the average bale is 3.1 feet long.

Other average charges are \$6.15 an acre or \$7.05 an hour for two-row corn picking; \$6.15 an acre or \$7.25 an hour for corn combining; \$5.75 an acre for combining small grains with a pull-type machine or \$6.85 for combining with a self-propelled combine; and 19 cents an hour for feed grinding and mixing.

The average cost of a complete job of silo filling comes to \$12.35 an hour. This job includes the use of the chopper, the blower, one full time and one part-time tractor, two wagons full time and one part-time and the services of two men.

Weed control spraying averaged \$2.45 an acre with the operator furnishing the spray material and \$1.55 an acre if the farmer furnishes the material.

Insect and disease spray rates were \$3.30 an acre if the materials were furnished by the operator and \$1.55 if the farmer furnished the materials.

Some operators did not report rate charges for certain jobs. For example, the job of field chopping hay or silage, on a per acre basis, does not show any average rates for the areas or the state. There were only 10 reports submitted on this particular job for the entire state.

● Nutrition Studies

Rates charged ranged from \$6 reported in the south central area to \$15 in the northwest. The state average for the 10 reports for field chopping on an acre basis came to \$10.30.

The average prices were for the 1960 crop year.

Girl's Father: "So you want to be my son-in-law, eh?"

Suitor: "Well, not exactly, sir. I just want to marry your daughter."

(From page 7) search because of their similar physical reactions. Producers within a 250 mile radius of Washington, D.C., who find identical-twin calves in their herds this spring may be able to make a substantial contribution to research of benefit to the livestock industry, research officials said.

A conservative is a chap who thinks nothing should be done for the first time.

1941—20th Anniversary—1961

SPRING SALES PROMOTION

Now-Bigger Than Ever!

SAVE - Special Anniversary Prices

MANY—MANY SPECIALS

See Us Today!



Charles B. Hooper

INTERCOURSE

PH. SO 8-3501

if you're getting the best chicks,
get the best feed too!

Good chicks today are worth real money. And so is good feed. Since a chick needs only 2 or 3 pounds of starter, it pays to feed the best.

that's why we recommend
Ful-O-Pep Chick Starter.

see or call us before your chicks arrive

H. M. STAUFFER & SONS, Inc.

WITMER-EX 7-6412 RONKS-OV 7-6612 LEOLA-OL 6-2811



Complete BULK FERTILIZER SERVICE

EASTERN STATES HAS BULK FACILITIES CONVENIENTLY
LOCATED FOR YOU

Bulk Pick-up • Field Spreading

- SAVE UP TO \$4.50 PER TON ON YOUR BULK PICK-UP
- CHECK AND BE AMAZED AT OUR FIELD SPREAD FERTILIZER PRICES.

CALL—

Lancaster Service Center

PHONE EX 4-3755 or

Quarryville Service Center

PHONE ST 6-2147 or

YOUR LOCAL REPRESENTATIVE



PUBLIC SALE

— OF —

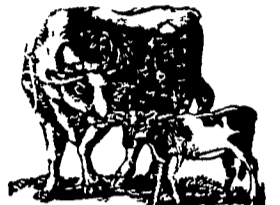
Livestock & Farm Implements

WEDNES., MARCH 8, 1961

AT 12:00 NOON

The undersigned will offer at Public Sale on the premises located 1/4 mile north of Mastersonville along the Colebrook Road, Lancaster Co., Pa.

**10 Head
Livestock**



FOUR GRADE MILKING COWS (freshing at different times of year) and SIX ANGUS BULLS weighing from 800 - 1000 pounds. TWO MULES.

One F-12 Farmall Tractor with cultivator and plow, F-20 Farmall Tractor, John Deere side-delivery rake, disc harrow, cultipacker, McCormick Deering 2-12" trailer plow, Wiard walking plow, manure spreader on rubber, 3 section harrow, rubber tire wagon with bed, fodder shredder, McCormick Deering horse cultivator, ensilage cutter and blower, corn planter, 2 horse wagon with box, four sets of tobacco ladders (2 with running gears), 1000 lb platform scales, bob-sled, corn sheller, chopping mill, two tobacco presses (1 Minnich), 6000 tobacco lath, one 32 ft extension ladder, belts, 2 unit Right-a-way milker with pipe, milk buckets, strainers, full line of butchering tools including scalding trough and electric grinder, lots of tools, three screw jacks, block & tackling, tobacco cellar stove, vise, scaffolding bucks, lots of log chains (different sizes), harness, two Raufferperger bridles, double & triple trees and many other desirable items too numerous to mention.

EAR CORN

Sale to begin at 12 noon when terms and conditions will be made known by

Rufus K. Geib, Auctioneer

ROY FLOYD

Refreshments will be sold by the Ladies Auxiliary of the Mastersonville Fire Co

PUBLIC SALE

—OF—

FARM EQUIPMENT

Tues., Mar. 7, 1961

The undersigned will offer at public sale on the premises 7/10 of a mile north of Wernersville, Berks County, Pa., turn north at the welding shop.

FARMALL H TRACTOR

AND CULTIVATOR

Ford 3-Pt. Hitch Grass Mower

John Deere 4-Bar Side Delivery Rake

McCormick Deering 13-Disc Drill

28-DISC HARROW, McCormick Deering Tractor drawn Manure Spreader, Land Roller, 3 point Hitch Carrier, 52-hour McCormick Deering Combine, GARDEN TRACTOR, David Bradley Corn Sheller, 500-lb Platform Scale, Power Mower, Hand Mower, Dual-wheel Trailer with flat bed; Bag Wagon, small Air Compressor Electric Fence Controller, Ladders

POULTRY EQUIPMENT

MOST OF IT IS OQUAKER MADE

23 10-hole Nests, 40 8-ft Hen Feeders, Automatic Water Fountains, Grit Feeders TWO BROODER STOVES, Chick Fountains, Time Clock, Egg Baskets

275-GALLON GAS TANK, Lancaster Shallow Well Pump Forks, Shovels, Rakes, Hand Tools

SOME HOUSEHOLD GOODS

Sale to start at 12 30 p.m. Terms by

Paul D. Angstadt

Chester K Long, Auctioneer
Akron, Pa., Phone Ephrata RE 3-5522
Charles Zinn & Joe Garman Clerks