



OFFICERS OF THE LANCASTER COUNTY 4-H Leaders' Council after their election Tuesday night are, left to right, Everett Kreider, Quarryville, vice president; Mrs. Walter Overgaard, Lancaster R4, secretary-treasurer, and Richard Lefever, Quarryville R1, president. The officers were selected from among the ten-member executive committee of the council. —L. F. Photo

Richard Lefever Is President Of 4-H Leaders

Richard Lefever, Quarryville R1, this week was elected president of the Lancaster County 4-H Leaders' Council. He succeeds Mrs. Harold Frev. Lefever was replaced as last year's vice president by Everett Kreider, also of Quarryville R1. Mrs. Walter Overgaard, of Lancaster R4, succeeds Mrs. Jean Thomas as secretary-treasurer of the organization.

A first-year member of the Future Farmers of America is called a "Green-hand".

DEAD ANIMALS REMOVED PROMPTLY
Will Pay Full Value For Dead Animals Dealers in Bones, Tallow and Hides
FRY'S RENDERING WORKS
Prop., John Fry
2114 Hollinger Rd. Lancaster
Ph. EX 2-4815 If No Answer Ph. EX 7-0472



The Most Famous Name In Corn
Pfister Associated Growers
R. D. 3, LANCASTER
Phone TW 8-7121

ORDER NOW

- Field Seeds
- Seed Potatoes
- Spray Materials
- Tobacco Muslin
- Fertilizers
- Lime
- Scott Products

Groff's Hardware
NEW HOLLAND
Ph. EL 4 0851

For the Most Markets Read Lancaster Farming

HORSE SALE
MONDAY EVENING — FEBRUARY 27, 1961
BLUE BALL, PA. LANCASTER COUNTY
20 HEAD STANDARD BREDS. 4 - 2 year olds. Brood mares, race prospects and drivers.
15 HEAD PONIES: Will sell on commission. Horses at 7:30 P. M. and tack at 6:30 P. M.
PAUL Z. MARTIN
Phone New Holland EL 4-6671
Notice—3rd Annual Quarter Horse Sale Saturday, April 1, 1961

All Day Public Sale

Reg. Ayrshire Dairy Cattle - Farm Implements

Thursday, March 9, 1961

Along hard road leading from the Village of Kirkwood to Route 896, 2 1/2 miles east of Kirkwood, Colerain Township, Lancaster County, Penna.

65 HEAD CATTLE

40 HEAD OF COWS all fresh or springing, 6 BRED HEIFERS, 19 YEARLING HEIFERS AND CALVES. Certified & accredited and nearly all vaccinated, tested within 30 days. Herd is on owner-sampler testing, following are some of the records on cows selling: Doll - 365 days, 13,175 M, 570 B.F., Dot - 362 days, 11,722 M., 551 B.F., Darlene - 365 days, 10,972 M., 505 B.F. Marion - 365 days, 12,458 M., 492 B.F. Fern - 344 days, 10,571 M., 478 B.F. Mina - 339 days, 12,601 M., 466 B.F. Queen - 324 days, 9,771 M., 465 B.F. Brownie - 275 days, 9,402 M., 455 B.F., Millie - 314 days, 10,061 M., 446 B.F. Home-raised herd, with plenty of type and show. A lot of milk, mostly all sired by S.P.A.B.C. bulls, and bred to them.

Full Line of Farm Machinery as follows:
FORD TRACTOR, MODEL N.A.A. with live P.T.O. 2 way hydraulic control, Dearborn equipment including 7-foot mower, Economy plow (14-inch), 10 ft lime and fertilizer spreader, 2-row cultivator, field cultivator, 14 ft. weeder.

D. C. CASE TRACTOR with cultivators, 3-bottom trailer plow (14 inch), Case 16 disc grain drill, Case 4-bar hay rake, Mc.D. 2-row, 3 point hook-up corn planter, Mc.D. 8 ft. cultipacker, Mc.D. 3-section spring harrow, Clark 28 disc-harrow, 2-bottom 16" Ferguson plow, New Idea No 12 spreader, Grove Economy wagon with 7'x16" sideboards, 24 ft. Smoker Special bale elevator with motor, New Holland 77 pick-up baler with loading chute, Massey-Harris 50 Combine (bin and P.T.O.), Wood Bros. corn picker, Roper post hole digger, Hay fan with 5 h.p. motor and 50 ft. cord, Hydraulic 2-way ram, Garber clover seeder with P.T.O., two-hole corn sheller, 2 feed carts, grease guns, Lombard Temp-est 51 chain saw (used a couple of hours); table circular saw, 20-ton screw jack, 5-ton hydraulic jack, hog troughs, anvil, bag wagon, pipe vise, (2) power lawn mowers, (3) log chains, wheelbarrows, air compressor, 30 ft. ext ladders bars and digging irons, shovels, forks, brooms, all kinds of tools, pea & bean scales, saddle and bridle

MIXED HAY, 1000 BUSHEL OF CORN, 12 TON OF STRAW.

MILKING EQUIPMENT: 3 Surge units, with pump; 2 h.p. milk tank compressor, 10-gal water heater, 20 cans, buckets, strainers, wash tubs, can racks, Stewart clippers.

POULTRY EQUIPMENT: electric stove, 500 capacity; (2) coal burners, 500 capacity; chicken crates, (4) range shelters, feeders, nests, baskets, etc

HOUSEHOLD GOODS & ANTIQUES: Bowl and pitcher toilet set, blanket chests, hall rack, flour chest, dishes, brass dipper, extension table, (2) living room chairs, (2) bedsteads, library table, (2) tables, (2) rockers, chest, books, kitchen cabinet, (2) bureaus, sewing machine, chairs, crocks, porcelain top table, metal kitchen chairs, porch furniture, Guardian service cooking ware, F.M. 2-speaker Radio, guns: .22 Hornet Rifle with scope, .20 gauge double barrel, and items too numerous to mention.

Sale to begin at 9:45 a.m. sharp. Cattle sale at 1:30 p.m. (to be held in a tent). Write for folder Lunch on sale.

Terms by Diller & Kreider, Aucts

Robert Harnish

CHRISTIANA R. D. 1
Phone Kirkwood LA 9-2167

STOP WINTER SLUMP

KILL "DIRTY RATS"

Laying hens that have gone down in production during cold weather may come back to normal production if given supplemental vitamin A and D feeding oil. Just give the birds a dose of feeding oil or cod liver oil in the feed, says Herb Jordan, Penn State extension poultry specialist. The local feed dealer or county agent can suggest a recommended mixture.

One rat will eat about 40 pounds of feed or food yearly and will contaminate nearly 10 times this amount. Stanley Gesell, Penn State extension entomologist, says there are a number of excellent rat baits on the market. When used properly, they are effective and safe. Follow directions carefully.

Patronize Lancaster Farming Advertisers.

PUBLIC SALE

SATURDAY, MARCH 4, 1961 - 11 A. M.

At the farm Southwest of Reinholds, on the road from Reinholds to Denver, Pa.

20 PUREBRED HOLSTEINS

Certified, Vaccinated and T.B. Accredited, Records to 19,141 lb of milk and 671 lb. of fat.

FARM IMPLEMENTS

881 Ford tractor like new, 500 hrs.; W.C. Allis Chalmers with W.D. cultivator; 1950 Chev. Truck, U tag; New rubber cattle racks, in good condition; Massey Harris, P.T.O. combine, 6 ft. cut; 2 New Idea wagon, 1 with silo sides; 1 wagon on u-loader; 2 false fronts; Gehl silage blower, 50 ft Pipe Black Hawk drill 13x7; John Deere hay conditioner; 76 New Holland baler; smoker elevator, 25 ft. with corn hopper; Case 4 bar rake; 3 pt. mower, 7 ft. cut; 3 pt. Ferguson weeder; 3 pt. 3x4 Ford trip plow; Sauder manure loader for Ford dirt scoop; New Idea manure spreader; 28" International disc harrow; 9 ft. cultipacker; 3 section spring harrow; 1 wagon on steel; a feed cart. 2-Unit DeLaval milk-er; DeLaval pail, twin tubs, 20 milk cans, buckets, strainer, DeLaval hot water heater; 8 can International milk cooler, 3000 tobacco bath; Bailing box; Air compressor.

DONALD KAUFFMAN, Owner
Denver, Penna.

Charles Good, Auct., Reinholds, Pa
Clarence E. Lyons, Sale Mgr., 204 Hess Blvd, Lancaster, Pa.
(Lunch available at the Sale by the Cocalico Church of the Brethren)

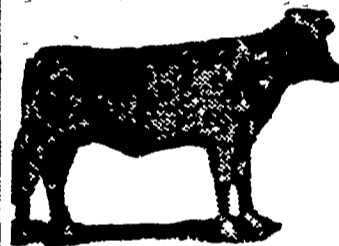
PUBLIC SALE

— OF —

Dairy Cattle AND FARM EQUIPMENT

Sat., March 4, 1961

Will be offered at Public Sale on the premises of the undersigned located one mile north of Lampeter, between Weaver Road and Rockvale Road (follow signs), Lancaster County, Pa., the following Dairy Cattle and Farm Equipment, to wit:



LIVESTOCK

20 Heifers

Twelve to freshen this summer and fall. Sired by S.P.A.B.C. and Curtiss Candy.

2 Stock Bulls

10 Feeder Bulls

8 SHEEP

15 SHOATS

6 SOWS to farrow on or before date of sale

3 Pair of High Class Mules

FARM EQUIPMENT FROM TWO FARMS

A LOT OF GOOD HORSE DRAWN EQUIPMENT & TACK

FOUR TRACTORS

TWO ALLIS-CHALMERS WD TRACTORS with live P.T.O. Wheel-weights, 3-bottom plow, 2 bottom plow; One set of Cultivators for WD; ONE FARMALL "H" TRACTOR, with cultivator, and one ALLIS-CHALMERS "B" TRACTOR, with Mounted Plow, Cultivators and Tobacco Hoers (All in excellent condition). MOUNTED TWO-ROW CORN PICKER for "WD"; NEW HOLLAND MODEL "66" BALER, ALLIS-CHALMERS COMBINE No. 60; John Deere and New Idea 7-FT GRASS MOWERS; Two McCormick-Deering disc harrows; John Deere Disc; TWO MANURE SPREADERS, (New Idea and Case); 20 FT SMOKER ELEVATOR; Drag Elevator, Two Farm Wagons, New Idea Side Delivery Rake; Two tobacco planters (one 2 row Bemis, and 1-row Bemis); Case corn planter; McCormick-Deering cultipacker, 6 row weeder; single and double tobacco ladders; two spring harrows; ground roller; Case stalk shredder; 3-ton metal feed bin, 1950 FORD CATTLE TRUCK (1/2 ton), 1950 GMC 3/4 TON CATTLE TRUCK; 24 ft DAVID BRADLEY CORN ELEVATOR, New Holland cannon sheller like new, TEN TON OF CORN, Etc

POULTRY—Including Nests and Water Feeders DAIRY EQUIPMENT—TWO McCORMICK-DEERING MILKER UNITS and DeLaval pump; tubs; water heater, pipe for 22 cows; and many other articles not menticed. Sale to begin at 11:00 o'clock, A. M., Sharp, on Saturday, March 4, 1961, when terms will be made known by

Alvin L. Miller and Frank L. Steiler, Auct
Breneman and Kreider, Clerks

JAMES E. KOSER

Lunch will be served by the Bible Classes of Heller's Reformed Church.