

14—Lancaster Farming,
Saturday, February 18.

● Sale Register
(From page 12)

March 4—Sat. 11:00 a. m.
Pub Sale of Dairy Cattle &
Farm Equip. by James E.
Koser, 1 mi North of Lam-
peter between Weaver Road
and Rockvale Rd. Miller &
Steller, Aucts.

March 7—Tues. 10:00 a. m.
Pub. Sale of Dairy Cattle &
Farm Equip by Joe Peter-
sheim, 4 mi. East of Honey
Brook on Rte. 322 (turn left
at Sun Oil Tanks, mile to
farm). Miller, Auct.

March 7—Tues., 12:30 p. m.
Pub. Sale of Farm Equip, H-
HG, and Poultry Equip. Paul
D. Angstadt. 7/10 mile N. of
Wernersville. Turn north at
the welding shop. Long Auct.

March 9—Thurs. 9.45 A.
M. Cattle sale at 1:30 P. M.
All Day Public Sale of Reg.
Arshire Dairy Cattle & Farm
Impl. Robert Harnish, R. 1,
Christiana along hard road
leading from the Village of
Kirkwood to Route 896. Dil-
ler & Kreider, Aucts.

March 14—Tues. 12:30 p.
m. Pub Sale of Farm Equip.
Elta Miller Estate, on Fulton
Street, Akron. Long Auct.

The Future Farmers of
America was organized na-
tionally in November, 1928,
during a meeting of students
and leaders held in Kansas
City, Mo.

PUBLIC HOG SALE

SAT., FEB. 25, 1961
AT 1 P. M.

MARTIN'S
SALES STABLES

BLUE BALL, PA.
LANCASTER CO.
40 BRED GILTS
10 FALL BOARS,
8 BREEDS

blood tested Lancaster Coun-
ty Swine Producers Associa-
tion.

JAMES Z. MARTIN,
Sec.-Treas.
EAST EARL, PA. R. D. 1
Paul Z. Martin, auct.

PUBLIC SALE
Of Livestock
and Farm Equipment

TUESDAY, FEB. 21, 1961

Will be offered at Public Sale
on the premises of the under-
signed, located 1 mi south-
west of Honey Brook, Ches-
ter County, Pa., just off Rte
10, the following, to wit

LIVESTOCK
22 HEAD HOLSTEIN COWS
Fresh and Close Springers

14 HEAD OF HEIFERS
FARM EQUIPMENT
TWO TRACTORS

One a Farmall 'H' Tractor;
the other a Farmall '200'
Tractor with Fast Hitch;
1952 DODGE 3/4 Ton Pick-up
TRUCK

Sub-Soiler for Fast Hitch;
New Holland '76' Baler,
Gleaner 6 ft Combine, Co. n
Picker, John Deere Crumper,
New Idea Manure Spreader;
Stauffer 2-row Tobacco Plan-
ter; New Idea Lime & Fertil-
izer Spreader, McCormick-
Deering Grain Drill, McCorm-
ick-Deering Corn Planter,
McCormick-Deering 2-bottom
Plow, McCormick-Deering 7-
ft. Hay Mower; McCormick-
Deering Side Delivery Rake;
25-Tooth Spring Harrow,
Disc; 2 Rubber-tired Wagon;
Snow Plow for Farmall 'H'
Tractor, Wood Saw for Farm-
all 'H' Tractor; PTO Weed
Sprayer, David Bradley Gar-
den Tractor, DeLaval Milker
Wilson Milk Cooler, Water
Heater, 5,600 Tobacco Lath,
Air Compressor; 40-ft Exten-
sion Ladders; 300-gal Gas
Tank & Pump; 2 Stewart
Cow Clippers; David Bradley
Chain Saw; 3 h.p. Outboard
Boat Motor; 20-Cu. Ft. Freez-
er; Corn, Hay & Straw; Milk
Cans; Chains; Motors, and
many other articles not men-
tioned

Sale to begin at 11 a. m., on
Tue. day, Feb. 21, 1961, when
terms will be made known by
JAMES WEAVER
Walter Wanner, Auct.

PUBLIC SALE

OF

Livestock & Farm Implements

Saturday, Feb. 18, 1961

AT 12:00 NOON

The undersigned will offer at Public Sale on the
premises located on West High Street, Manheim,
Lanc County, Penna.

15 HEAD OF LIVESTOCK

1951 FORD TRACTOR, 1 bottom plow, disc harrow,
cultivator, 7-ft. grass mower, corn planter, scraper blade,
and carry all. The above items are all 3-point hook-up.

New Idea No. 12 manure spreader, Oliver manure
spreader, Iron "H" double-row tobacco planter, single row
tobacco planter, two rubber tire wagons with beds (one
Oliver - like new), tobacco wagon with ladders, one set
of tobacco ladders, 4-section spring harrow, spike harrow,
cultipacker, roller harrow, manure sled, 24 in. barn fan,
pony cart, McCormick Deering 9-hoe grain drill, on rubber
tires; pony harness and saddle, 12 ft. outside hay rack,
6,000 tobacco lath, wheelbarrow and feet carts.

POTATO EQUIPMENT

Iron H. double row potato planter, Nigra 8-row duster,
McCormick Deering single row power takeoff potato dig-
ger, Boggs potato grader with motor

20 TON EAR CORN - 15 TON STRAW - 5 TON HAY
100 BUSHELS BARLEY

Delaval milking machine and pipe, hot water heater,
can rack and wash tubs, Whirl-a-Way egg washer, metal
chicken nests, chicken feeders, broiler feeders, chicken
coops, two 500 size electric chick brooders, one 350 infra-
red chick brooder, three automatic water troughs, egg
baskets.

HOUSEHOLD GOODS—Six kitchen chairs, extension
table, beds, crib and refrigerator, Many other items too
numerous to mention.

Sale to begin at 12 noon when terms and conditions
will be made known by

Rufus Geib, Auctioneer **J. Harold Mummau**
R. Hershey & H. Erb, Clerks
Refreshments will be sold by the ladies of Milton
Grove E. U. B. Church.

PUBLIC SALE

— OF —

REGIST. HOLSTEIN & GUERNSEY CATTLE
and FARM IMPLEMENTS

Saturday, March 4, 1961

One-half mile west of New Providence Mennonite
Church along road leading from New Providence to
the Buck, Lancaster County.



30 Head
REGISTERED
Holsteins

7 Head of Registered Guernseys

SERVICE AGE BULL SELLS

Certified - Accredited - Vaccinated - tested within 30 days.

Cows mostly fresh or springing, 6 heifers due for fall
freshening. Following are the sires represented in the
herd, Willow Slope Man-O-War Pabst, Elmcroft Voyager
M, Bond Haven Rag Apple Maple, Seiling Black Magic,
Llewram Benefactor Leader, Raymondale Sovereign Mas-
ter, Creston Grand Ma ter, Greenwood Master, Pabst
Walker Ollie, Hedge Acreston De Ormsby and Penstate
Antonio Lucifer.

These record cows sell—Fay - 6 yr. old, 308 days,
15,104 milk, 3.6%, 551 lbs. B. F.; Ella - 6 yr. old, 346
days, 15,220 lb. milk, 3.5%, 530 B.F.; Guernsey - 319 days,
10,255 lb milk, 4.4%, 452 lb B. F.; Betty - 5 yr. old, 282
days, 11,250 lbs. milk, 4.0%, 451 lb. B.F.; Flora - 2 yr.
347 days, 10,286 lb. milk, 4.26 lb. B.F., 4.9%; Man-O War,
317 days, 11,736 lb milk, 3.5%, 412 lb. B.F.

This is a fine group of cattle with good size, nice ud-
ders, and splendid type. Be sure to see them sell.

FULL LINE OF EQUIPMENT AS FOLLOWS—

1959 ALLIS CHALMERS D-14 TRACTOR, wide axle
power steering, 3 point hook-up, cultivators;

1956 WD 45 ALLIS CHALMERS TRACTOR, 3 bottom
Semi-mounted Plow, 2-bottom Economy Dearborn 14"
plow, Heavy Duty Mc D. disc plow, Ferguson 3 point
cultivators with fertilizer attach, Ferguson 3-point Orchard
cultivator; A. C. Forage Harvester, with grass & corn head;
Allis-Chalmers Blower with mounted motor, two John
Deere forage wagons with self unloading beds, one Ford
7'x20' wagon, Joan Deere No. 9 mounted mower, 3-point
hookup, Cunningham hay crimper, 4 bar Mc.D. rake, A.C.
Roto - Baler, Bale elevator, New Idea manure preader,
Ontario 13 disc tractor grain drill, 3-point weeder, culti-
packer, New Holland 8' fertilizer spreader, 2 row Hershey
transplanter, Iron-Age high pressure 200 gallon sprayer
with 30' boom, New Holland Hammermill, Clay barn
cleaner with 105 foot chain and power unit; Outside 16 ft.
hay rack; barn ventilating fan, two-wheel trailer, rub-
ber tire wheelbarrow, Poultry feeders, International elec-
tric fence controller, metal fence posts, forks, shovels, etc.

DAIRY EQUIPMENT

2 unit DeLaval Milker, 3-unit pump, strainers, buck-
ets, double wash tubs, Stewart clippers.
20 Ton Ear Corn, Some Ensilage.

For good cattle and machinery be sure to attend this
sale.

Sale to begin at 11:00 A. M.

Lunch by the Ladies of New Providence Mennonite
Church.

Carl Diller & J. Everett Kreider, Aucts

Willard B. Delp

R. D. 1. NEW PROVIDENCE

PUBLIC SALE

Saturday, Feb. 25, 1961

12:00 P. M.

At Calvert, Maryland on the Dr. Lynch Farm,
just off Route 272, 5 miles East of Rising Sun,
Maryland. Watch for sale signs.

40 Head
of Livestock

17 cows, Holstein & Guernsey, 6 fresh with
calves, 2 due day of sale, rest in various stages.

19 Holstein heifers, 3 - 2 years and bred.

16 - 3 months to 15 months of age. All vaccin-
ated.

4 Holstein bulls, 4 months to 2 years of age.
All livestock eligible for out of state shipment.

MISCELLANEOUS

10-can milk cooler, some straw, about 500 bu.
corn, corn sheller, hog feeders.

Sale will be held inside.

We are not responsible for any accidents.

Terms: Cash

RAY MOORE, Owner

Norman Hart, Auct.
Phone Kirkwood, Pa. Lambert 9-2744

Lunch will be served by Calvert Methodist Church.

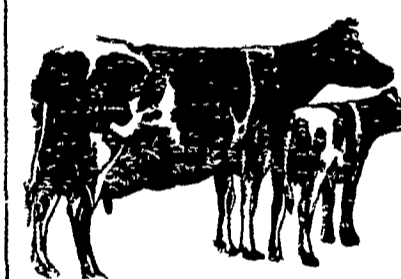
PUBLIC SALE

— OF —

Holstein Cows & Farm Equipment

Tuesday, Feb. 28, 1961

Will be offered at Public Sale on the premises of
the undersigned, located four miles south of New Hol-
land, along the road leading from New Holland to
Gap, in Earl Township, Lancaster County, Pennsyl-
vania, the following Holstein Cows and Farm Equip-
ment, to wit:



40 Head
OF
HOLSTEIN
Dairy Cows

Fresh or close springers; many bred back for Fall; several
milking up to 60 pounds a day. Cattle are T.B. Accredited
and Blood-tested, have good udders and plenty of size and
type.

FULL LINE OF ALLIS-CHALMERS EQUIPMENT
AS FOLLOWS:

THREE TRACTORS

One ALLIS CHALMERS "WD" TRACTOR, with Live PTO,
Manure Loader, Dirt Scoop and Snowplow; One ALLIS
CHALMERS "WC" TRACTOR, with Starter, Lights and
Mounted Mower, the other an ALLIS CHALMERS "CA"
TRACTOR with Cultivators, Pick-up Corn Planter and To-
bacco Hoers

Allis-Chalmers Double Disc Plow; 3-Bottom Plow; Allis
Chalmers 32 Disc Harrow; Heavy Duty Tractor Disc on
Rubber A.C. ENSILAGE HARVESTER; Allis-Chalmers
Blower with 50 Ft of Pipe (filled about 5 silo.), JOHN
DEERE FIELD CHOPPER; Ensilage Wagon; Wagon Unload-
ing Unit; 16- and 18-Ft Rubber-tired Wagons; TEMPLETON
125 - BUSHEL MANURE SPREADER; IRON-AGE TRAC-
TOR SPREADER; 16 Hoe McDeering Grain Drill on Rub-
ber; NEW HOLLAND "77" PICK-UP BALER; 1-Row Allis
Chalmers CORN PICKER; NEW IDEA 7-FT. TRAILER
MOWER; Heavy Duty 18-Ft Trailer with Double Tobacco
Ladder; 2 Row Tobacco Planter; Tobacco Weeder, McDeer-
ing 3-Section Spring Harrow; 3-Section Harrow; Cultipack-
er; Case 4-Bar Side Delivery Rake; McDeering 4-Bar Side
Delivery Rake; Buck Rake; Resenthal Corn Husker-Shred-
der; 32 FT. SMOKER BALE ELEVATOR; CUNNINGHAM
HAY CONDITIONER; 1948 CHEVROLET FLEETLINE
1951 DODGE STAKE-BODY PICK-UP, Minnich Tobacco
Press; Feed Cart, 2 Wheelbarrows (1 rubber-tired), 2 Sets
of Tractor Chains/Dehorner; Power Saw; Electric Drill; Elec-
tric Fence Chargers; Log Chains; Forks; Shovels; Cow
Chains; Tools, Etc

DAIRYING EQUIPMENT — 4 UNIT McDEERING
MILKER, Pump; 30 Milk Cans; Stainless Steel Strainers,
Buckets; Double Tubs; Can Rack; Two Sets of Stewart Clip-
pers

HOUSEHOLD APPLIANCES — WILSON 23 CU. FT.
FREEZER; PHILCO 11 CU. FT. REFRIGERATOR; Young-
town Dishwasher; KELVINATOR ELECTRIC RANGE,
Winger Washer - 2 Space Heaters; BEDROOM SUITE; DIN-
ING ROOM SUITE; Rugs; Kitchen Cabinet and many arti-
cles not mentioned. (The above appliances are like new)

Sale to begin at 11:00 o'clock A. M., on Tuesday, Feb
ruary 28, 1961, when terms will be made known by

Lloyd D. Rosenberry and Son

Carl Diller and J. Everett Kreider, Aucts. Phone: New Holland ELgin 4-7881

(Lunch by the Ladies of Zeltreich Church)