

5 Game Lands Maintained In County

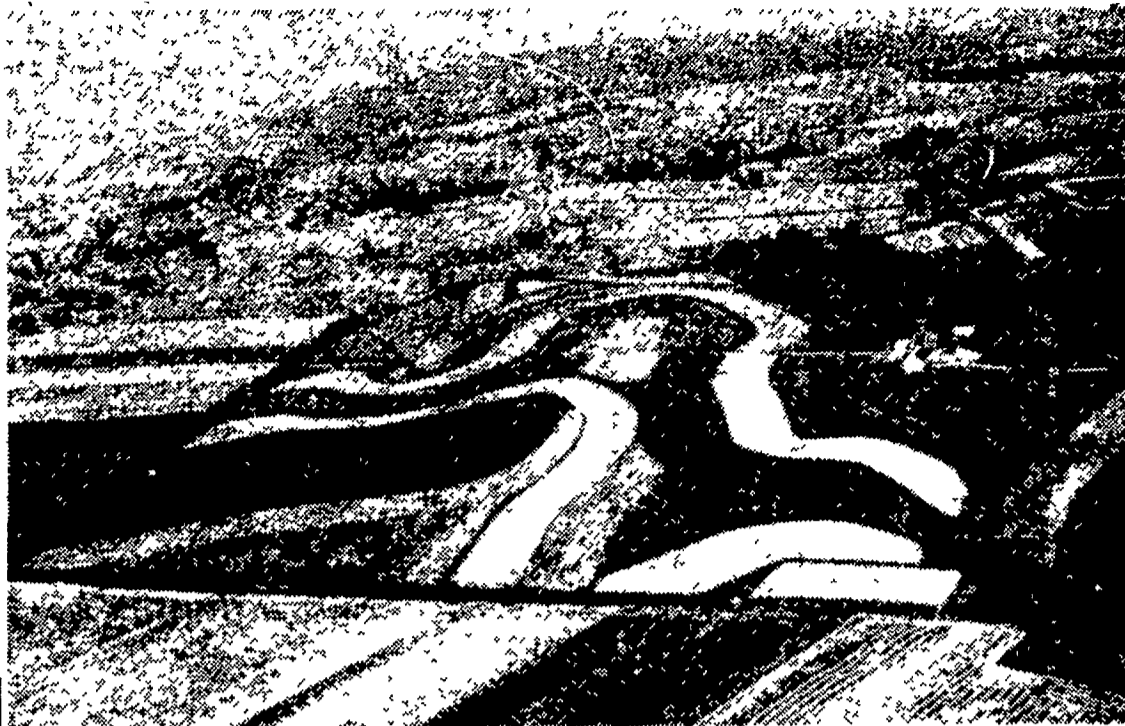
Lancaster County has five tracts of Game Lands that comprise a total of 5,543 acres. In addition to supervising the five game lands, the Lancaster County Game Commission conducts four Cooperative Farm-Game projects in the county.

M. D. Stewart, Supervisor of the Southeastern Division of the Pennsylvania Game Commission, reported this week there are 327 farmers with 31,255 acres enrolled

in cooperative Farm-Game projects.

The Game Commission through its Lancaster County game protectors, John Eicholtz, John Haverstick, and Wallace Woodring, and Steve Mace, land manager in Lebanon and Lancaster Counties, carried out the program of conservation on the Game Lands and the Farm-Game projects.

Under the Farm-Game program a total of 840 acres were leased; 538 farmers were contacted, a total of 12,650 pine seedlings and 2,550 shrub seedlings were distributed; over 5,100 seedlings were planted by the game commission, and 1,500 lineal feet of woodland border



THE GAME COMMISSION maintains State-owned game lands. Under the supervision of the Soil Conservation Service contours and hedges provide plenty of feed and cover for wildlife. The dark lines are Lespedeza, Coral berry and Multiflora Rose hedges. —SCS Photo


New
Musser Leghorn
FARMS
PULLET

 R.D. 1, MOUNT JOY, PA.

ers were cut

On the five game lands 14 strips, including 38 acres were turned by share croppers, nine strips and 44 acres were mowed; three strips and 12 acres were limed, and a total of 31 acres were fertilized with 0-20-20. Also on the Game Lands 9,600 shrub seedlings and 950 pine seedlings were planted and 4,400 lineal ft of woodland borders were cut.

The label on a can of tomatoes costs more than the farmer got for the tomatoes.

FHA Loans

(From page 5)

farm business with better livestock and better machinery and buildings, it is estimated that over 8% was used directly for soil and water conservation purposes.

"We find that farmers following good conservation practices have a larger net income and are able to make larger loan repayment and maintain loan security in top condition" Hoover said. Hoover expressed thanks

to the Lancaster County Soil Conservation District for their cooperation.

Farmers may contact the Farmers Home Administration at room 222 in the Post Office building, Lancaster, or through any of the committee members. The Farmers Home Administration County Committee serving the Lancaster-Lebanon Area is as follows: Elvin Hess, Jr., R. D. 1, Strasburg; Willis Z. Esbenschade, 1631 Esbenschade Road, Lancaster; Howard B. Weiss, R. D. 2, Myerstown.

Tomorrow's Poultry Profits

START WITH

Eby's Chick-to-Egg Feeding Program



EBY'S



Our Servicemen Will Be Glad To Explain
The Eby CHICK-TO-EGG Feeding Program

SEE OR CALL US TODAY

EBY'S MILL, Inc. HEMPFIELD MILLS, Inc.

LITITZ

Phone MAdison 6-2106

EAST PETERSBURG

Phone Landisville TW 8-3031

KILL RATS!

Use

RAT KAKES!

APPLY NEW JERSEY GREEN SAND and CALPHOS now to all trees and shrubbery, grain and hay fields.

Colloidal Phosphate

Apply regularly on all stable manure to increase value and mineral content.

NEW JERSEY GREEN SAND

Did you know that Green Sand has unlimited uses?

One of them is on poultry drop pits. It helps solve the moisture problem.

CONTACT

Brooklawn Farm

118 KREIDER AVENUE

LO 9-1580

Or Your Local Dealer

REIST'S

Sure Crop Seeds

ALFALFAS

Vernal
DePuit
Ranger
Buffalo
Grimm

CLOVERS

Pennscott
Kenland
Penna. Grown
Mammoth

HYBRID CORN
DEVELOPED BY
PENN STATE EXP.
STATION

Get our prices
and save money

REIST SEED COMPANY

MOUNT JOY, PA.

Phone OL 3-3821